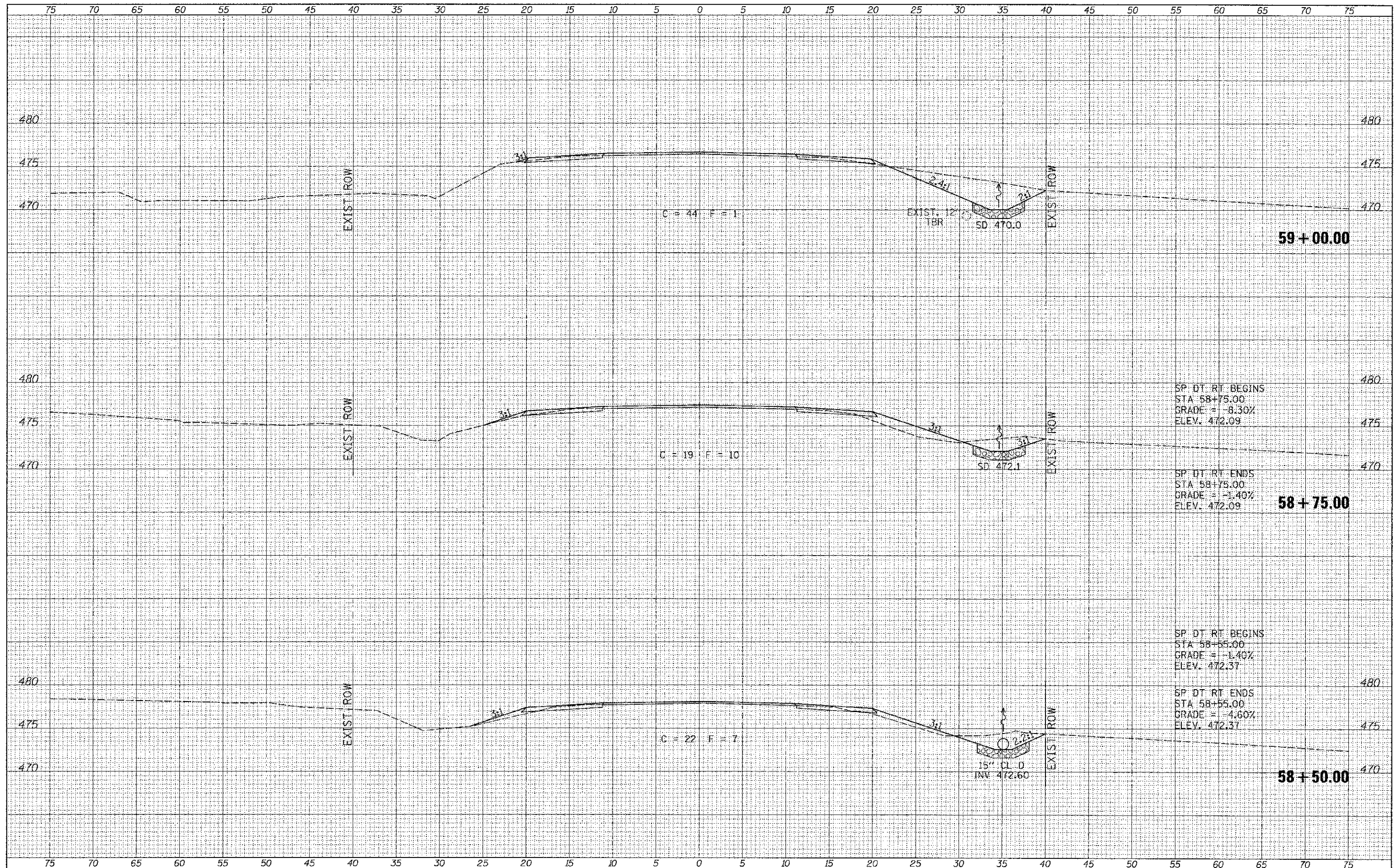


DATE	
BY	
FINAL SURVEY	
NOTED SURVEY	
NOTE BOOK	
NO.	

DATE	
BY	
ORIGINAL SURVEY	
NOTED SURVEY	
NOTE BOOK	
NO.	



SP DT RT BEGINS
 STA 58+75.00
 GRADE = -8.30%
 ELEV. 472.09

SP DT RT ENDS
 STA 58+75.00
 GRADE = -1.40%
 ELEV. 472.09

58 + 75.00

SP DT RT BEGINS
 STA 58+55.00
 GRADE = -1.40%
 ELEV. 472.37

SP DT RT ENDS
 STA 58+55.00
 GRADE = -4.60%
 ELEV. 472.37

58 + 50.00

FILE NAME =
 V:\Bridge\2852-Pike\2852xsh1.dgn

USER NAME = othomas
 PLOT SCALE = 5.0000' / 1"
 PLOT DATE = 4/25/2012

DESIGNED -
 DRAWN -
 CHECKED -
 DATE -

REVISED -
 REVISED -
 REVISED -
 REVISED -

**PIKE COUNTY
 COUNTY HIGHWAY 10 OVER
 BAY CREEK TRIBUTARY**

CROSS SECTIONS

SCALE: 1"=5' SHEET NO. 2 OF 5 SHEETS STA. 58+50.00 TO STA. 59+00.00

FILE NO.	SECTION	COUNTY	TOTAL SHEETS	SHEET NO.
603	10-00085-00-BR	PIKE	23	20
CONTRACT NO. 93582				
FED. ROAD DIST. NO. 7 ILLINOIS			FED. AID PROJECT BR5-0603(115)	