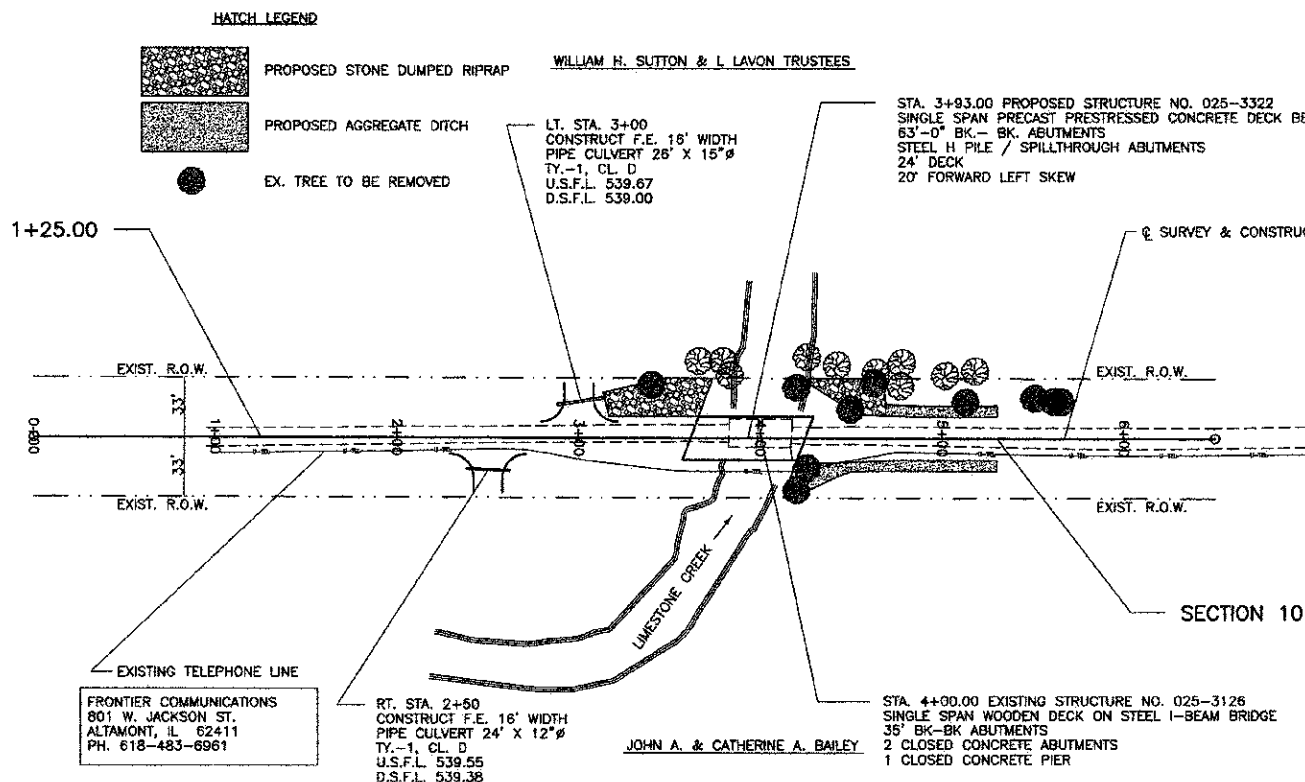


ROUTE	SECTION	COUNTY	TOTAL SHEETS	SHEET NO.
T.R. 283	10-15110-00-BR	EFFINGHAM	15	3
CONTRACT NO. 95665		ILLINOIS	PROJECT BROS-0049(199)	



SECTION 10-15110-00-BR BEGINS STA. 1+25.00

SECTION 10-15110-00-BR ENDS STA. 5+30.00



TIES P.O.T. STA. 5+30.00

TIES P.O.T. STA. 1+00.00

SCALES:
1" = 50' HOR
1" = 5' VER

NOTE: RIPRAP DITCHES AFTER EXCAVATION

B.M. LT. STA. 3+66
SPIKE IN LOCUST TREE
ELEV. 540.37

TRANSITION EXISTING ROADWAY TO PROPOSED ROADWAY
STA. 0+75 TO 1+25 AND STA. 5+30 TO 5+80
QUANTITIES FOR THE ABOVE ARE INCLUDED IN THOSE LISTED

STATION	DESCRIPTION	UNIT	QUANTITY
565			565
560	EARTHWORK	CU. YD.	
	Earth Excavation	180	
	Channel Excavation	280	
	Embankment	485	
	Furnished Excavation	245	
555	AGG. SURF. CSE., TYPE B	TON	325
	STA. 1+25 TO 5+30		
545	STONE DUMPED RIPRAP, CLASS A4	TON	285
540	PIPE CULVERTS, CLASS D, TYPE 1 12"	FOOT	24
	RT. STA. 2+50		
540	PIPE CULVERTS, CLASS D, TYPE 1 15"	FOOT	26
	LT. STA. 3+01		
535			535
530			530
525			525
520			520

