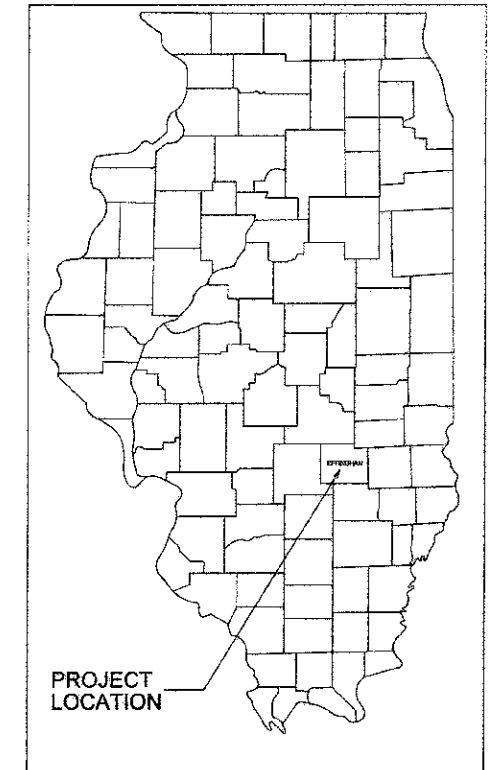


08-03-12 LETTING ITEM 017

| ROUTE | SECTION | COUNTY | TOTAL SHEETS | SHEET NO. |
|--------------------|----------------|-----------|------------------------|-----------|
| T.R. 283 | 10-15110-00-BR | EFFINGHAM | 15 | 1 |
| CONTRACT NO. 95665 | | ILLINOIS | PROJECT BROS-0049(159) | |

STATE OF ILLINOIS
DEPARTMENT OF TRANSPORTATION
DIVISION OF HIGHWAYS
**PLANS FOR PROPOSED
HIGHWAY BRIDGE PROGRAM**
SECTION 10-15110-00-BR EFFINGHAM COUNTY
PROJECT BROS-0049(159)
JOB NO. C-97-001-12
WEST ROAD DISTRICT
T.R. 283



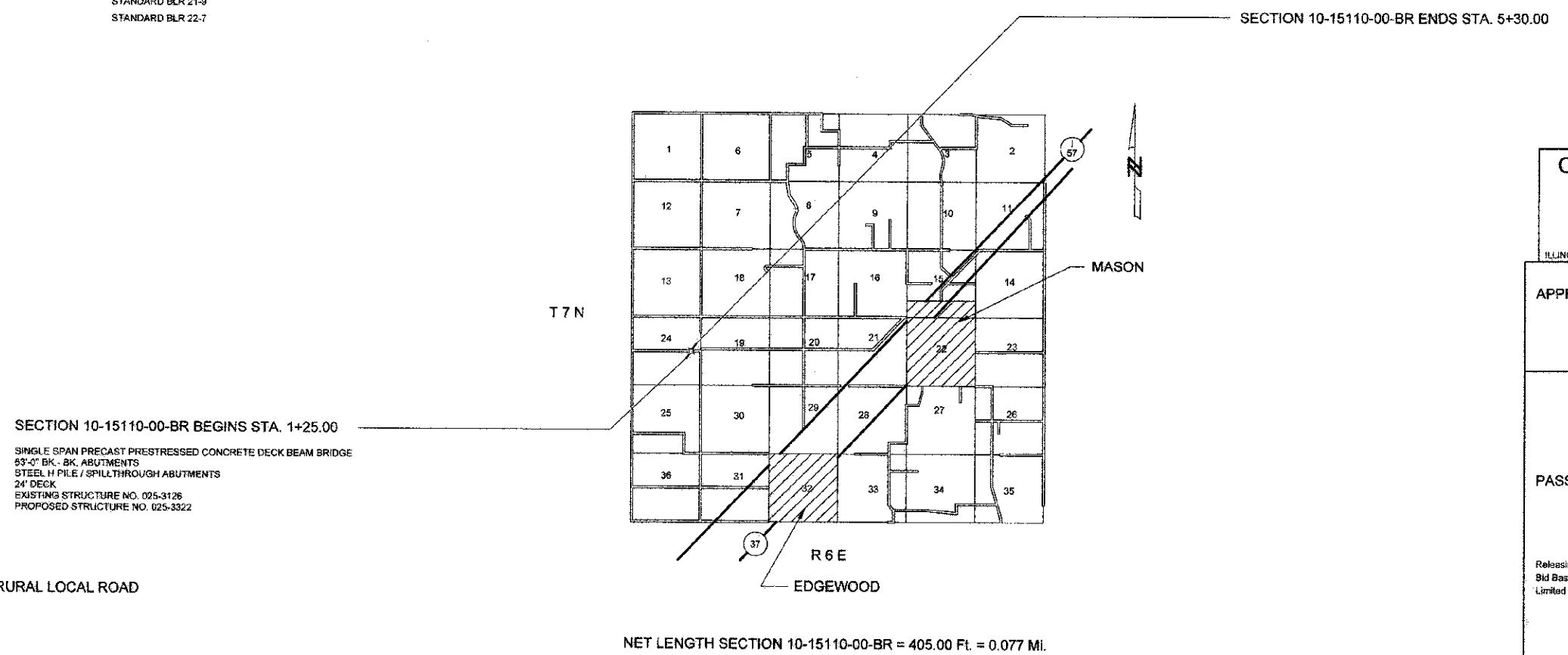
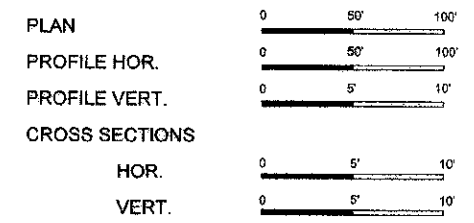
CONTRACT NO. 95665
Joint Utility Locating Information for Excavators
JULIE 1-800-892-0123

INDEX OF SHEETS

| SHEET | ITEM |
|-------|----------------------------|
| 1 | COVER SHEET |
| 2 | SUMMARY OF QUANTITIES |
| 3 | ROADWAY PLAN AND PROFILE |
| 4 | EROSION CONTROL PLAN |
| 5 | GENERAL PLAN AND ELEVATION |
| 6 | SUPERSTRUCTURE |
| 7 | SUPERSTRUCTURE DETAILS |
| 8 | STEEL RAILING, TYPE S-1 |
| 9 | WEST ABUTMENT DETAILS |
| 10 | EAST ABUTMENT DETAILS |
| 11 | PILE DETAILS |
| 12 | BORING LOGS |
| 13-15 | CROSS SECTIONS |

STANDARD DRAWINGS

- STANDARD 000001-06
- STANDARD 280001-06
- STANDARD 515001-03
- STANDARD 701901-02
- STANDARD BLR 21-9
- STANDARD BLR 22-7



FUNCTIONAL CLASSIFICATION - RURAL LOCAL ROAD
ADT = 75
DESIGN SPEED = 30 MPH

Robert A. Charleston
Ch. Engr. Exp. 8/29/78
5/15/12
 Lic. Expires 11/30/12

REGISTERED PROFESSIONAL ENGINEER OF ILLINOIS

CHARLESTON ENGINEERING, INC.
CONSULTING ENGINEERS
105 NORTH KITCHELL
P.O. BOX 397
OLNEY, ILLINOIS 62450
(618) 392-0735
ILLINOIS DEPARTMENT OF PROFESSIONAL REGULATION REGISTRATION #184.000513

APPROVED May 16 2012
A. J. D. K.
 COUNTY ENGINEER

PASSED 6/6 2012
M. J. K.
 DISTRICT SEVEN ENGINEER OF LOCAL ROADS AND STREETS

Releasing For Bid Based on Limited Review 6/6 2012
Robert A. Charleston
 DEPUTY DIRECTOR OF HIGHWAYS
 REGION FOUR ENGINEER

| | | | | |
|--------------------|----------------|-----------|------------------------|-----------|
| ROUTE | SECTION | COUNTY | TOTAL SHEETS | SHEET NO. |
| T.R. 283 | 10-15110-00-BR | EFFINGHAM | 15 | 2 |
| CONTRACT NO. 95665 | | ILLINOIS | PROJECT BROS-0049(159) | |

DESIGN DATA

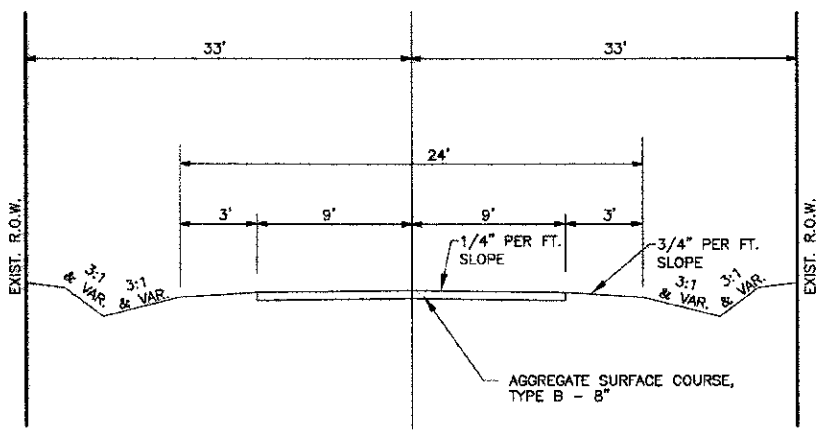
RURAL LOCAL ROAD
ADT = 75

GENERAL NOTES

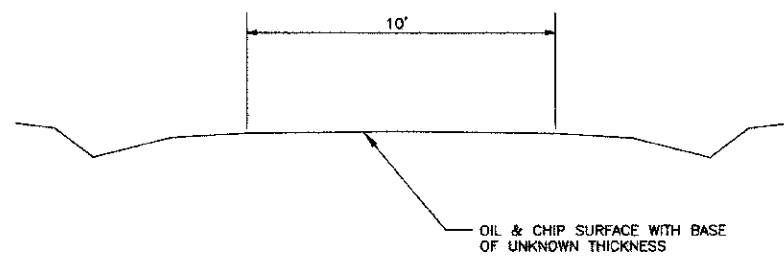
- SEEDING: THIS WORK SHALL BE PERFORMED IN ACCORDANCE WITH THE APPLICABLE PORTIONS OF SECTION 250 OF THE STANDARD SPECIFICATIONS AND SHALL BE PAID FOR AT THE CONTRACT UNIT PRICE FOR SEEDING CLASS 2 (SPECIAL).
 - SPRING SEEDING SHALL EXTEND FROM JANUARY 1 TO JUNE 30
FALL SEEDING SHALL EXTEND FROM JULY 1 TO DECEMBER 31
 - FERTILIZER NUTRIENTS SHALL BE APPLIED AT THE RATE OF 100 LB/ACRE
 - MULCHING SHALL BE DONE IN ACCORDANCE WITH ARTICLE 251 OF THE STANDARD SPECIFICATIONS AND SHALL BE DONE BY METHOD 2, PROCEDURE 1 AT THE RATE OF 2 TONS PER ACRE.
- NO PAYMENT FOR OVERHAUL WILL BE MADE ON THIS SECTION.

| SUMMARY OF QUANTITIES | | | | |
|-----------------------|---|--------|----------|--|
| CODE NO. | ITEM | UNIT | QUANTITY | |
| X2501000 | SEEDING, CLASS 2 (SPECIAL) | ACRE | 0.30 | |
| 20100110 | TREE REMOVAL (6 TO 15 UNITS DIAMETER) | UNIT | 54 | |
| 20100210 | TREE REMOVAL (OVER 15 UNITS DIAMETER) | UNIT | 96 | |
| 20200100 | EARTH EXCAVATION | CU YD | 180 | |
| 20300100 | CHANNEL EXCAVATION | CU YD | 280 | |
| 20400800 | FURNISHED EXCAVATION | CU YD | 245 | |
| 28000305 | TEMPORARY DITCH CHECKS | FOOT | 21 | |
| 28000400 | PERIMETER EROSION BARRIER | FOOT | 81 | |
| 28100807 | STONE DUMPED RIPRAP, CLASS A4 | TON | 285 | |
| 28300400 | AGGREGATE DITCH | TON | 72 | |
| 35101400 | AGGREGATE BASE COURSE, TYPE B | TON | 75 | |
| 40200800 | AGGREGATE SURFACE COURSE, TYPE B | TON | 325 | |
| 50100100 | REMOVAL OF EXISTING STRUCTURES | EACH | 1 | |
| 50300225 | CONCRETE STRUCTURES | CU YD | 24.6 | |
| 50300280 | CONCRETE ENCASEMENT | CU YD | 2.8 | |
| 50400505 | PRECAST PRESTRESSED CONCRETE DECK BEAMS (27" DEPTH) | SQ FT | 1474 | |
| 50800205 | REINFORCEMENT BARS, EPOXY COATED | POUND | 3340 | |
| * 50900205 | STEEL RAILING, TYPE S1 | FOOT | 123 | |
| 51201400 | FURNISHING STEEL PILES HP 10X42 | FOOT | 315 | |
| 51202305 | DRIVING PILES | FOOT | 315 | |
| 51203400 | TEST PILE STEEL HP 10 X 42 | EACH | 1 | |
| 51500100 | NAME PLATES | EACH | 1 | |
| 542D0217 | PIPE CULVERTS, CLASS D, TYPE 1 12" | FOOT | 24 | |
| 542D0220 | PIPE CULVERTS, CLASS D, TYPE 1 15" | FOOT | 26 | |
| 67100100 | MOBILIZATION | L. SUM | 1 | |

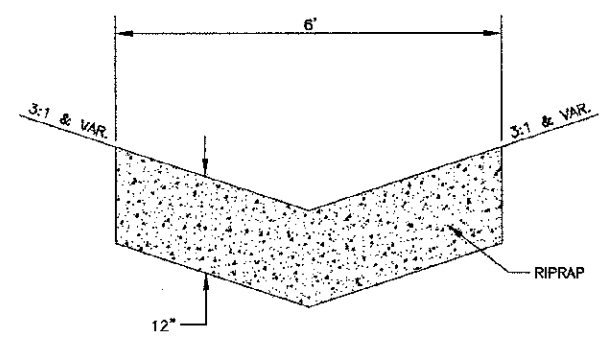
* SPECIALTY ITEMS



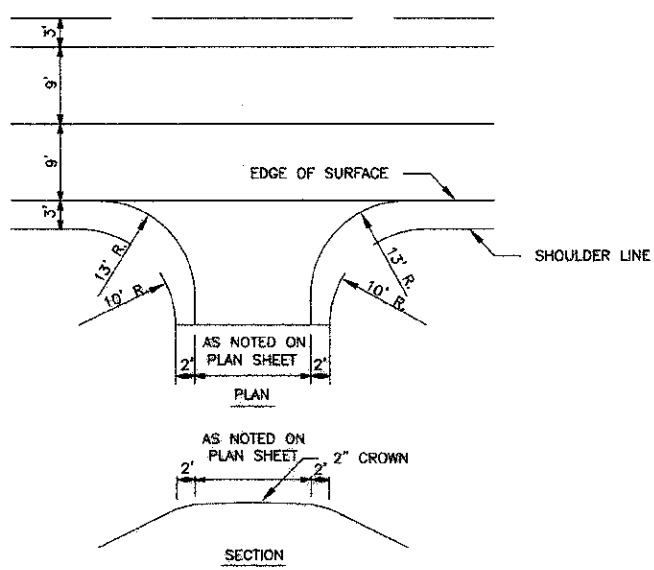
TYPICAL SECTION
PROPOSED



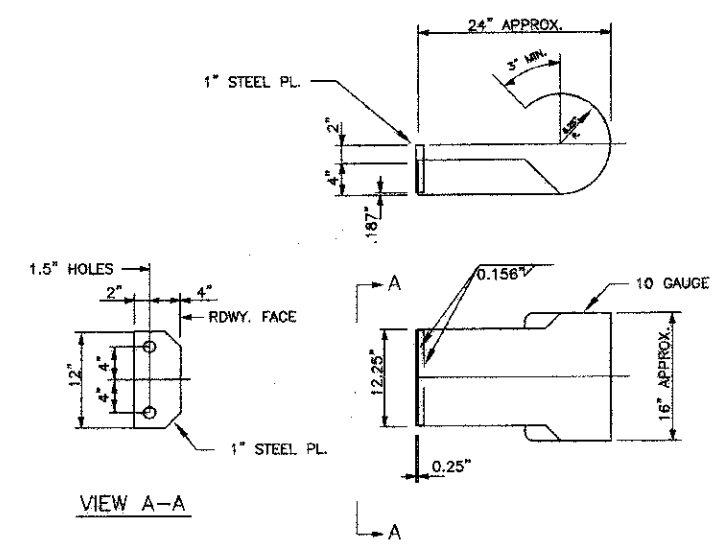
TYPICAL SECTION
EXISTING



AGGREGATE DITCH DETAIL
LT. STA. 4+69 TO 5+30
RT. STA. 4+12 TO 5+30





FIELD ENTRANCE DETAIL
RT. STA. 2+50
LT. STA. 3+00

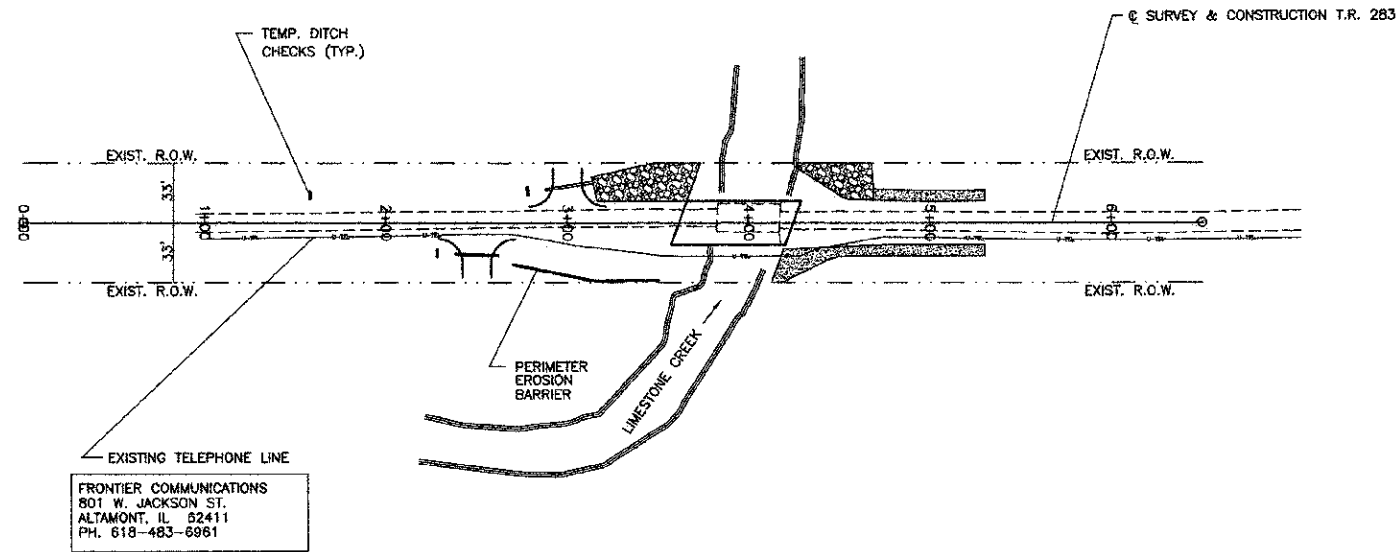


CURLED END SECTION DETAILS
4 REQUIRED - COST INCLUDED IN
STEEL RAILING, TYPE S-1"

| ROUTE | SECTION | COUNTY | TOTAL SHEETS | SHEET NO. |
|--------------------|----------------|-----------|------------------------|-----------|
| T.R. 283 | 10-15110-00-BR | EFFINGHAM | 15 | 4 |
| CONTRACT NO. 95665 | | ILLINOIS | PROJECT BROS-0049(159) | |

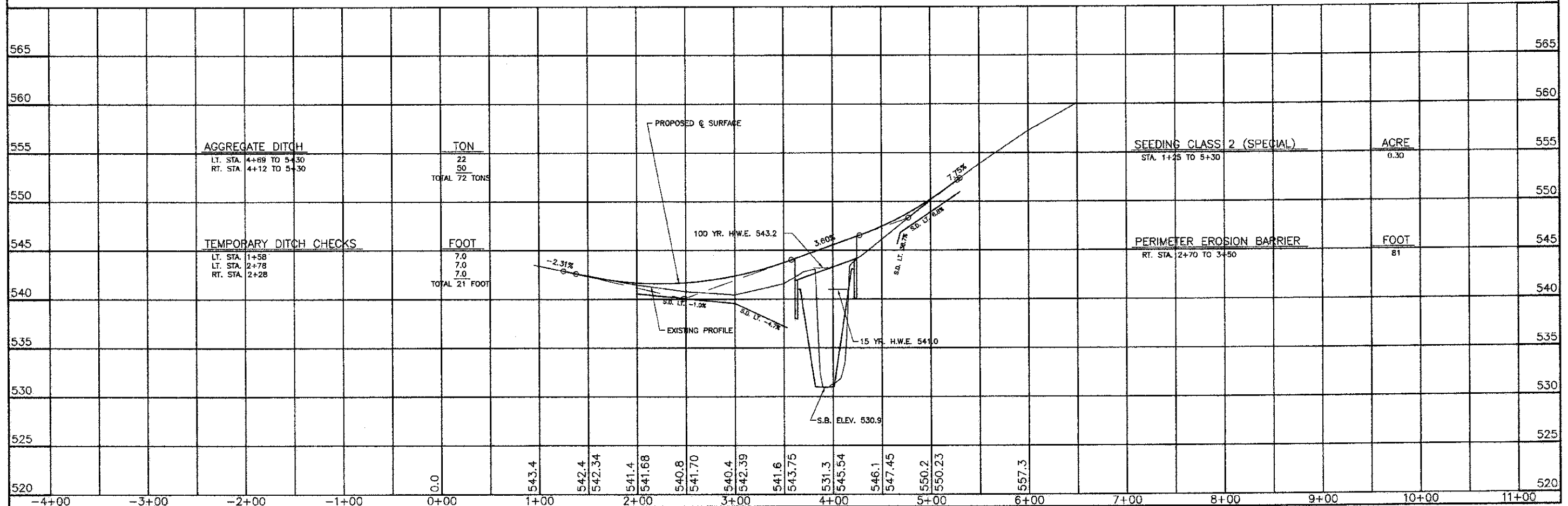
HATCH LEGEND

-  PROPOSED STONE DUMPED RIPRAP
-  PROPOSED AGGREGATE DITCH



SCALES:
1" = 50' HOR
1" = 5' VER

NOTE: RIPRAP DITCHES AFTER EXCAVATION



AGGREGATE DITCH
LT. STA. 4+69 TO 5+30
RT. STA. 4+12 TO 5+30

TON
22
50
TOTAL 72 TONS

SEEDING CLASS 2 (SPECIAL)
STA. 1+25 TO 5+30
0.30 ACRE

TEMPORARY DITCH CHECKS
LT. STA. 1+58
LT. STA. 2+78
RT. STA. 2+28

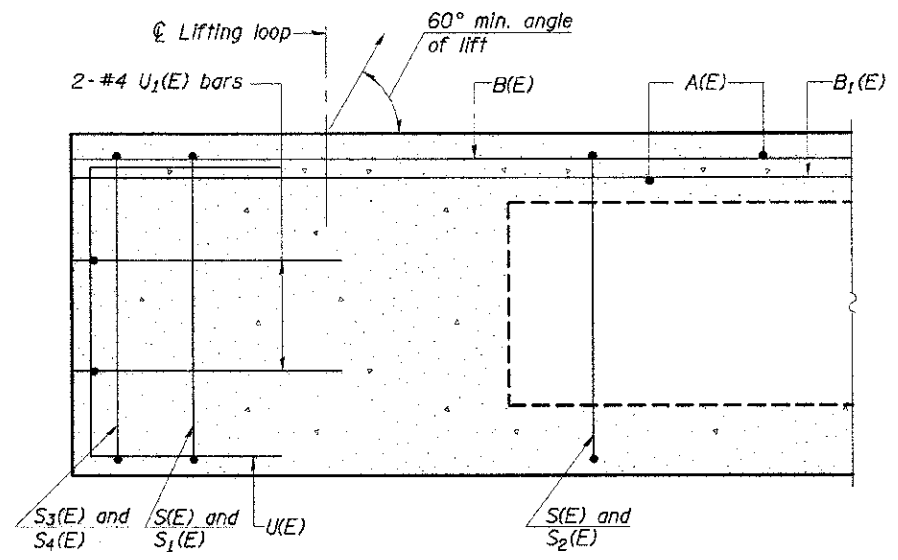
FOOT
7.0
7.0
7.0
TOTAL 21 FOOT

PERIMETER EROSION BARRIER
RT. STA. 2+70 TO 3+50
81 FOOT

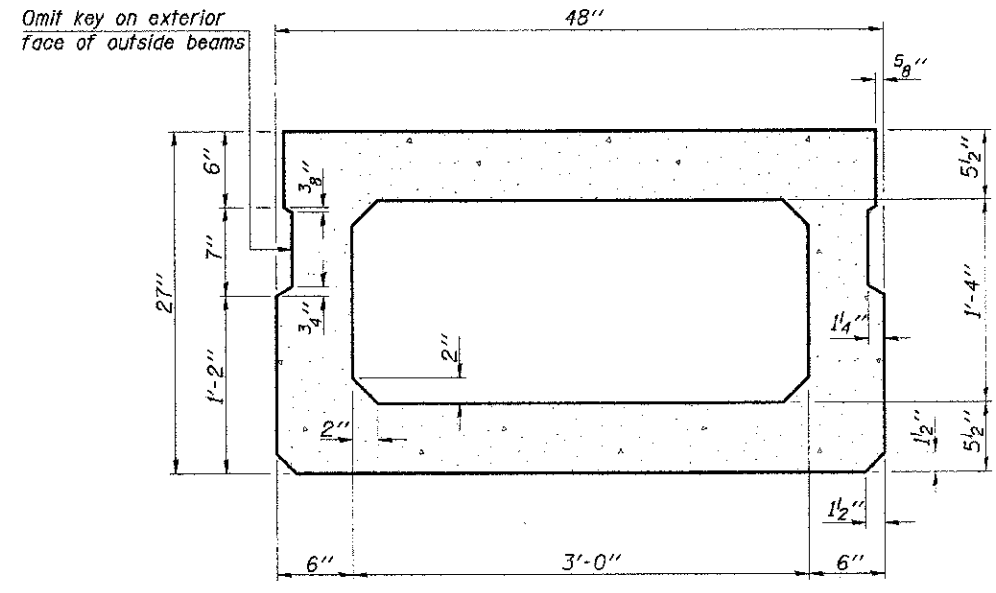
100 YR. H.W.E. 543.2

15 YR. H.W.E. 541.0

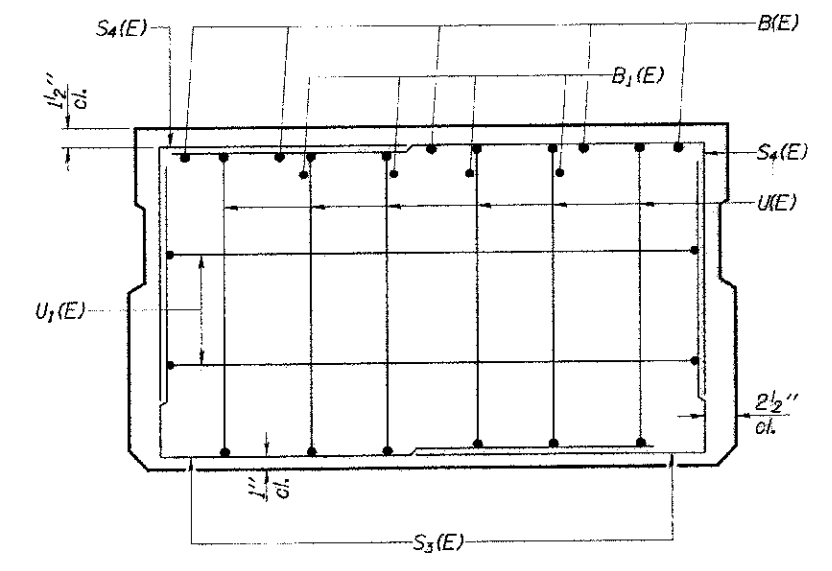
S.B. ELEV. 530.9



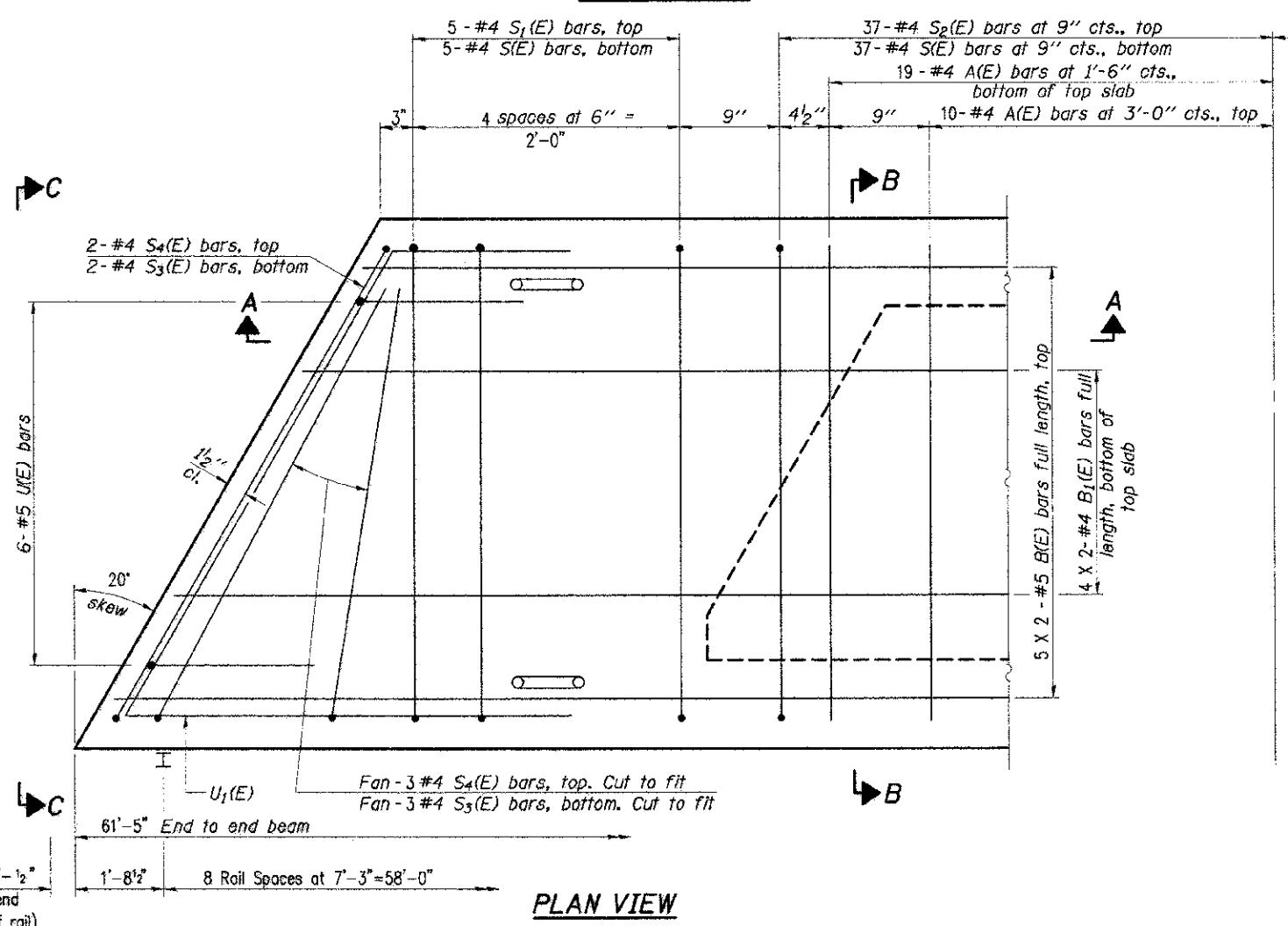
SECTION A-A



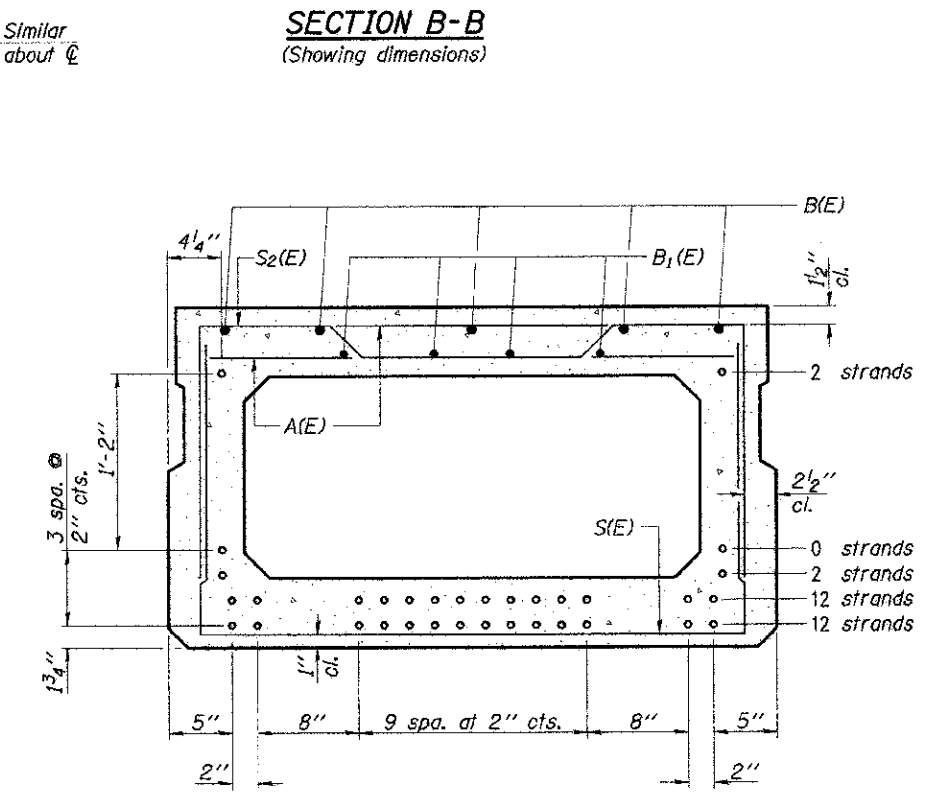
SECTION B-B
(Showing dimensions)



VIEW C-C



PLAN VIEW



SECTION B-B

(Showing reinforcement and permissible strand locations)

- Notes: 1. 28 Total Strands
2. Place the number of strands specified in each row symmetrically about the centerline of beam in the permissible strand locations shown.

BAR LIST
ONE BEAM ONLY
(For information only)

| Bar | No. | Size | Length | Shape |
|-------|-----|------|---------|-------|
| A(E) | 58 | #4 | 3'-7" | — |
| B(E) | 10 | #5 | 31'-10" | — |
| B1(E) | 8 | #4 | 31'-10" | — |
| S(E) | 84 | #4 | 7'-5" | ┌ |
| S1(E) | 10 | #4 | 6'-11" | ┌ |
| S2(E) | 74 | #4 | 7'-2" | ┌ |
| S3(E) | 10 | #4 | 5'-9" | ┌ |
| S4(E) | 10 | #4 | 5'-6" | ┌ |
| U(E) | 12 | #5 | 4'-6" | ┌ |
| U1(E) | 4 | #4 | 7'-6" | ┌ |

Note: See sheet 7 of 15 for additional details and Bill of Material.

CHARLESTON ENGINEERING, INC.
CONSULTING ENGINEERS
105 NORTH MITCHELL
P.O. BOX 397
OLNEY, ILLINOIS 62450
(618) 362-8738
ILLINOIS DEPARTMENT OF PROFESSIONAL REGULATION REGISTRATION #184 003513

SUPERSTRUCTURE
STRUCTURE NO. 025-3322

T.R. 283
OVER LIMESTONE CREEK

SECTION 10-15110-00-BR
EFFINGHAM COUNTY
STATION 3+93.00

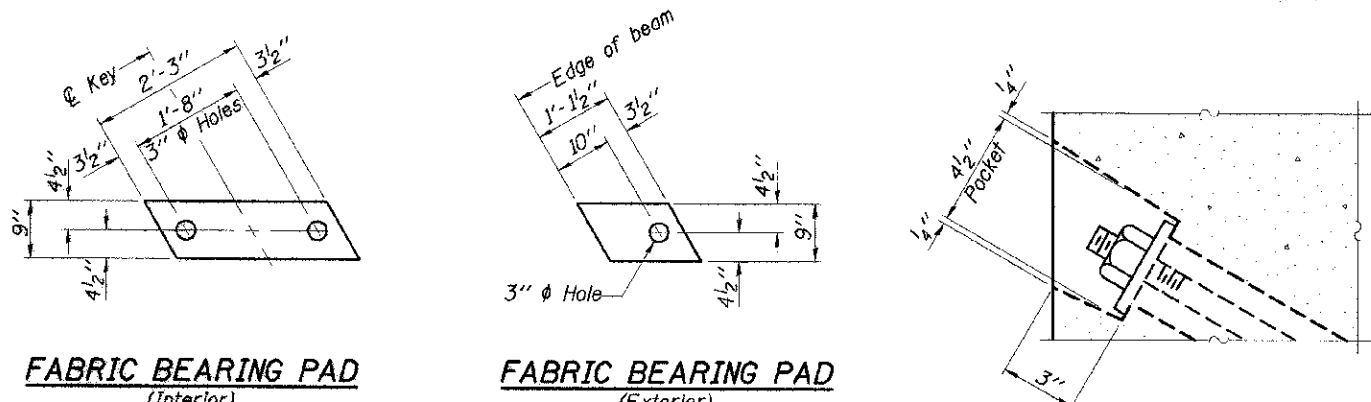
Note: Spacing of S(E) and S2(E) bars may be adjusted up to 4" in the immediate area of the transverse tie diaphragms to miss the block outs for the transverse ties.

Bars indicated thus 5 X 2-#5 etc. indicates 5 lines of bars with 2 lengths per line.

MINIMUM BAR LAP

- #4 bar = 2'-0"
- #5 bar = 2'-6"

| | | | | |
|--------------------|----------------|-----------|------------------------|-----------|
| ROUTE | SECTION | COUNTY | TOTAL SHEETS | SHEET NO. |
| T.R. 283 | 10-15110-00-BR | EFFINGHAM | 15 | 7 |
| CONTRACT NO. 95665 | | ILLINOIS | PROJECT BROS-0049(159) | |

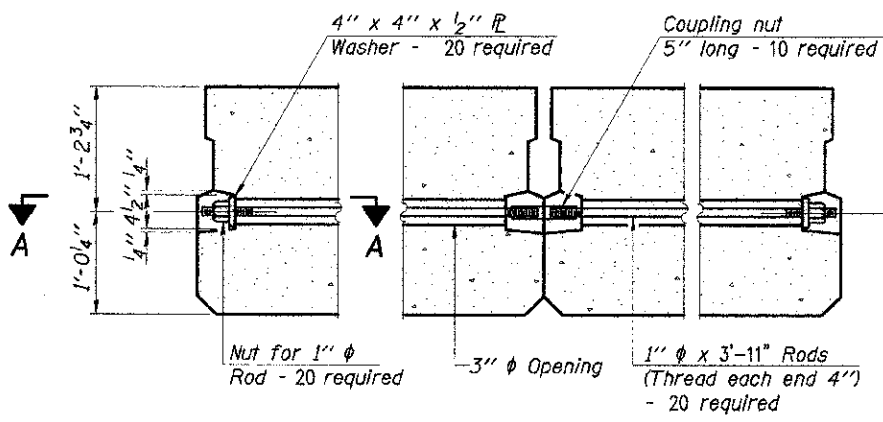


FABRIC BEARING PAD
(Interior)

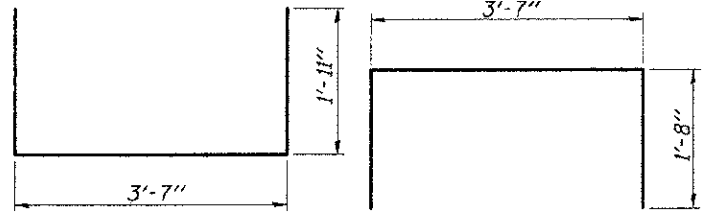
FABRIC BEARING PAD
(Exterior)

SECTION A-A

Notes:
FIXED
 All bearing pads shall be 1" thick.
 Omit holes when using expansion bearings.
 Expansion bearing pad shall be bonded to the substructure.

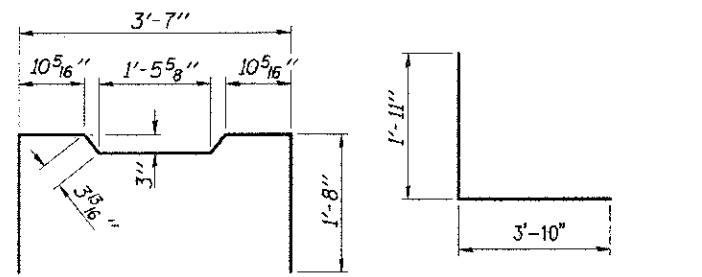


TYPICAL TRANSVERSE TIE ASSEMBLY



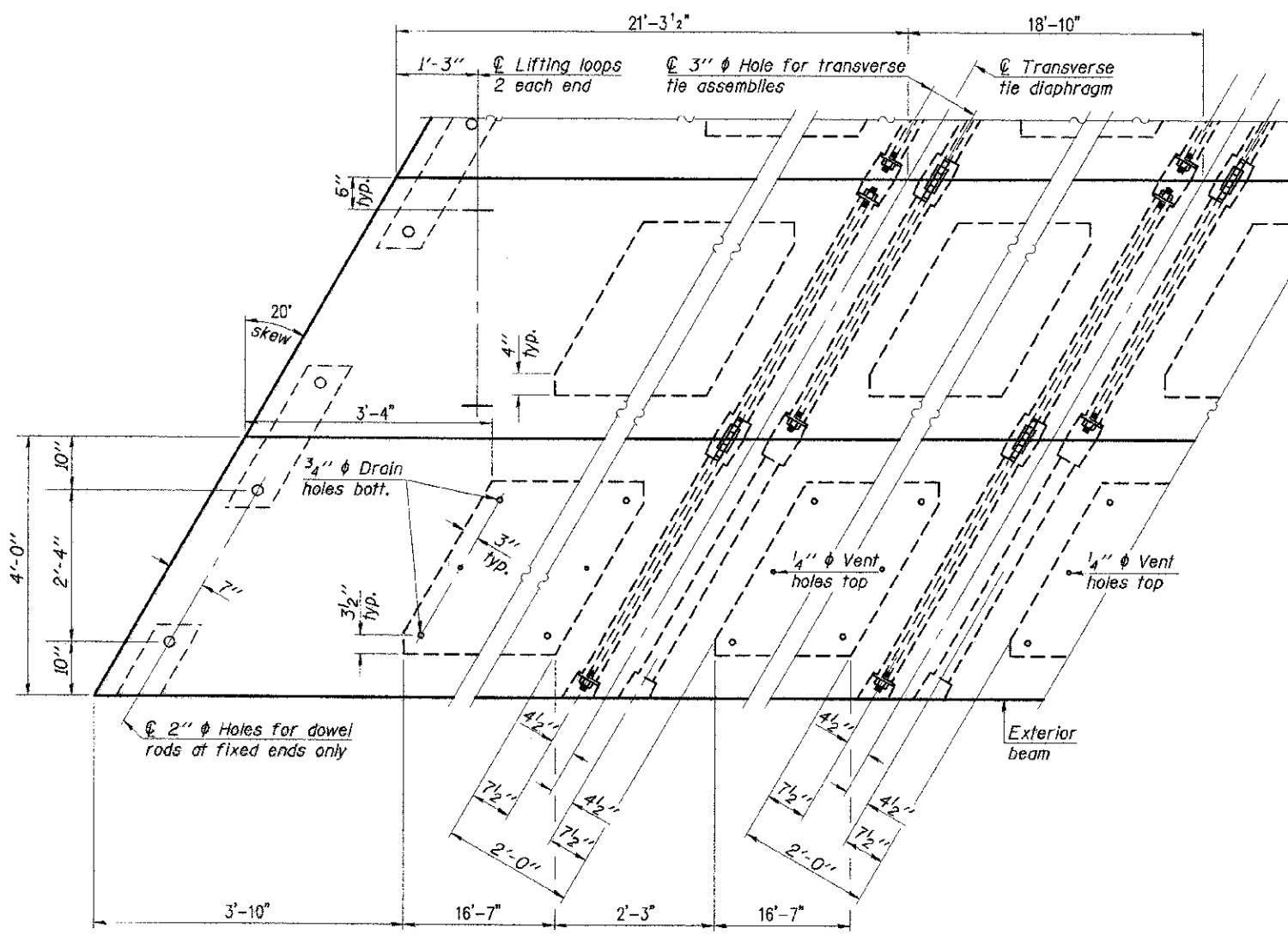
BAR S1(E)

BAR S2(E)



BAR S3(E)

BAR S4(E)

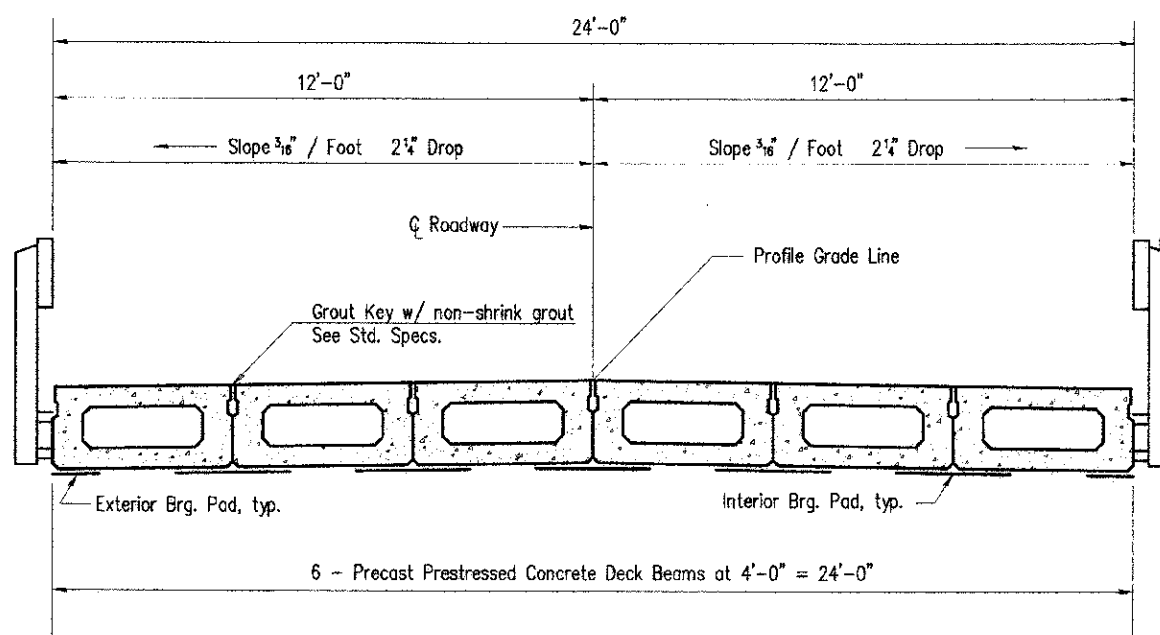


PLAN VIEW

NOTES

Prestressing steel shall be uncoated high strength, low relaxation 7-wire strand, Grade 270. The nominal diameter shall be 1/2" and the nominal cross-sectional area shall be 0.153 sq. in. The 1" rods in the transverse tie assembly shall be tightened to a snug fit and the threads set. Pockets on exterior faces of bridge shall be filled with grout after transverse tie assembly is in place.
 Reinforcement bars shall conform to ASTM A 706, Grade 60. (See Special Provisions).
 Two 1/8" fabric adjusting shims of the dimensions of the exterior bearing pad shall be provided for each bearing pad location.
 A minimum 2 1/2" diameter lifting pin shall be used to engage the lifting loops during handling.
 Corrosion Inhibitor, per Article 1020.05(b)(12) and 1021.06 of the Standard Specifications, shall be used in the concrete for precast prestressed concrete deck beams.
 Compressive strength of prestressed concrete, f'c, shall be 6000 psi.
 Compressive strength of prestressed concrete at release, f'ci, shall be 5000 psi.

Note: Connect beams in pairs with the transverse tie configuration shown.

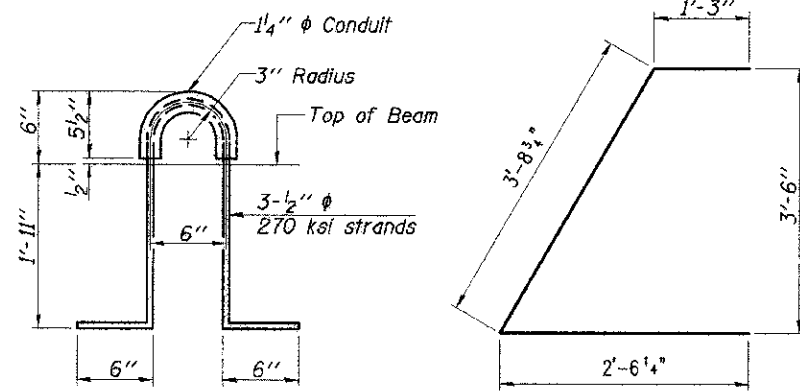


CROSS SECTION

Steel Bridge Rail, Type S-1, See Sheet 8 of 15 for complete details

BAR U1(E)

BAR U2(E)



LIFTING LOOP DETAIL

BAR U1(E)

BILL OF MATERIAL

| | | |
|---|---------|------|
| Precast Prestressed Conc. Deck Bms. (27" depth) | Sq. Ft. | 1474 |
|---|---------|------|

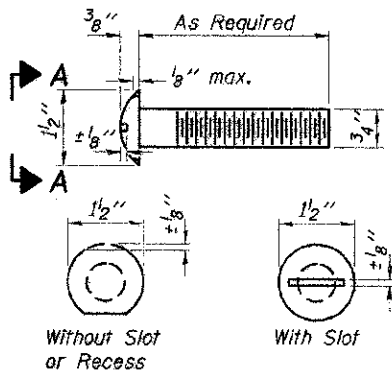
CHARLESTON ENGINEERING, INC.
 CONSULTING ENGINEERS
 105 NORTH KITCHELL
 P.O. BOX 357
 OLNEY, ILLINOIS 62450
 (618) 392-0799
ILLINOIS DEPARTMENT OF PROFESSIONAL REGULATION REGISTRATION #184 003513

SUPERSTRUCTURE DETAILS

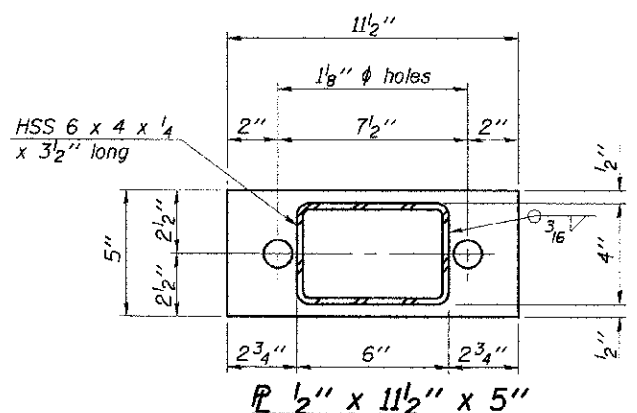
STRUCTURE NO. 025-3322
T.R. 283
OVER LIMESTONE CREEK

SECTION 10-15110-00-BR
EFFINGHAM COUNTY
STATION 2+02.00

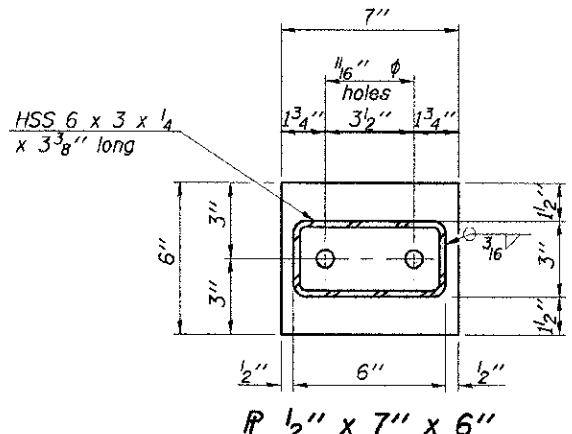
| | | | | |
|--------------------|----------------|-----------|------------------------|-----------|
| ROUTE | SECTION | COUNTY | TOTAL SHEETS | SHEET NO. |
| T.R. 283 | 10-15110-00-BR | EFFINGHAM | 15 | 8 |
| CONTRACT NO. 95665 | | ILLINOIS | PROJECT BROS-0049(158) | |



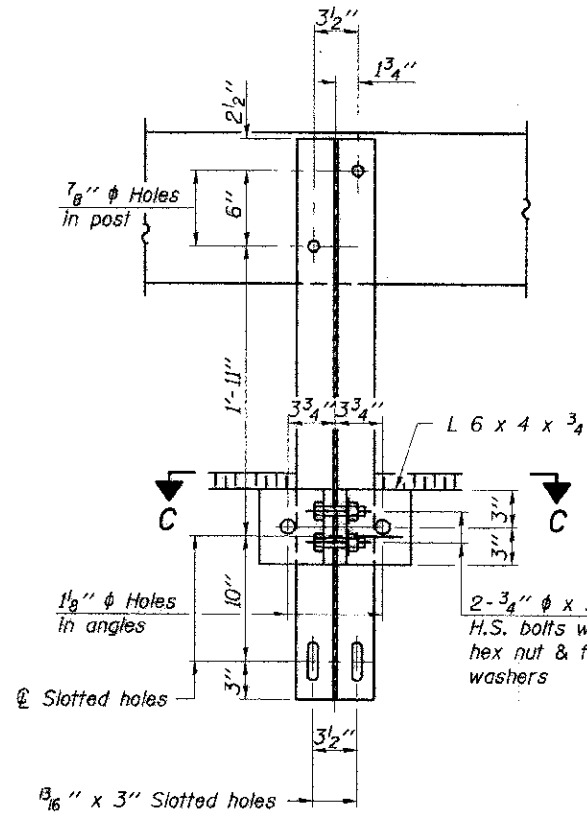
**VIEW A-A
ROUND HEAD BOLT**



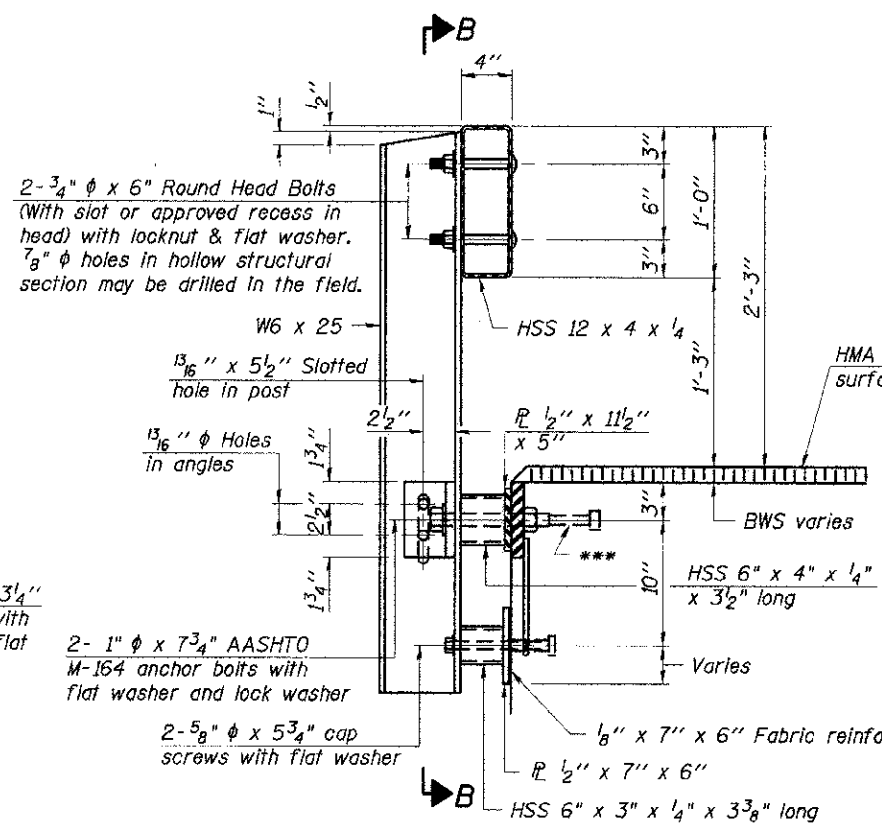
PL 1/2" x 11 1/2" x 5"



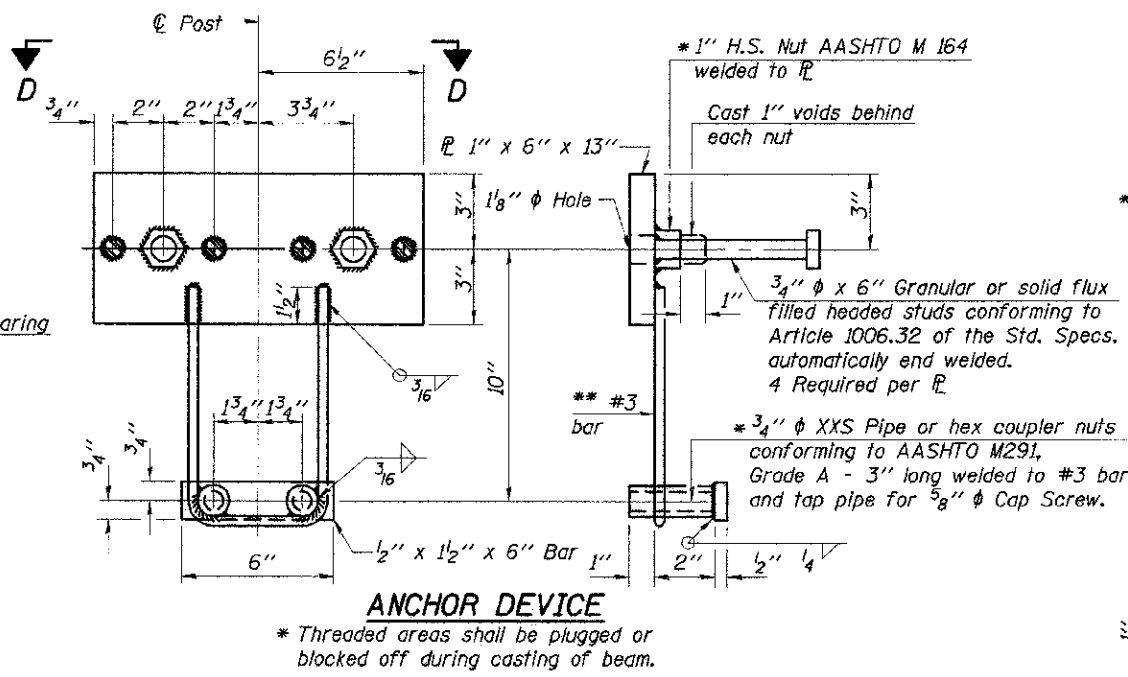
PL 1/2" x 7" x 6"



SECTION B-B

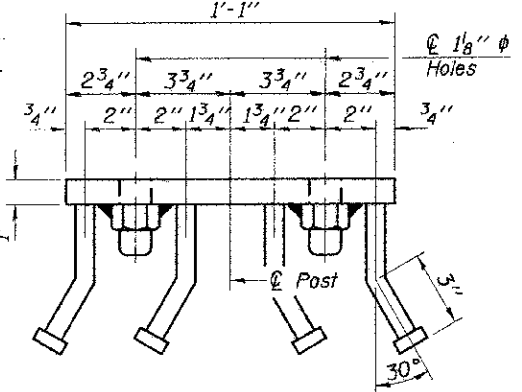


SECTION AT RAILING POST

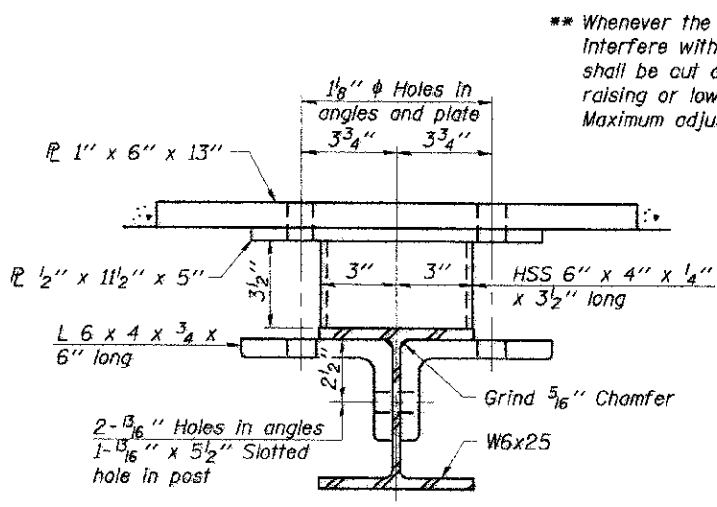


ANCHOR DEVICE

Notes:
 All field drilled holes shall be coated with an approved zinc rich paint before erection.
 For multi-span bridges, sufficient 1/4" x 6" x 1'-2" galvanized steel shims shall be provided to align rail between adjacent spans. Cost included with Steel Railing, Type S-1.
 All steel rail elements shall be galvanized according to Article 509.05 of the Standard Specifications.
 *** The studs of the anchor devices shall be placed below the top reinforcement bars and the outermost longitudinal reinforcement bar shall be placed directly above the studs of the rail post anchor device.

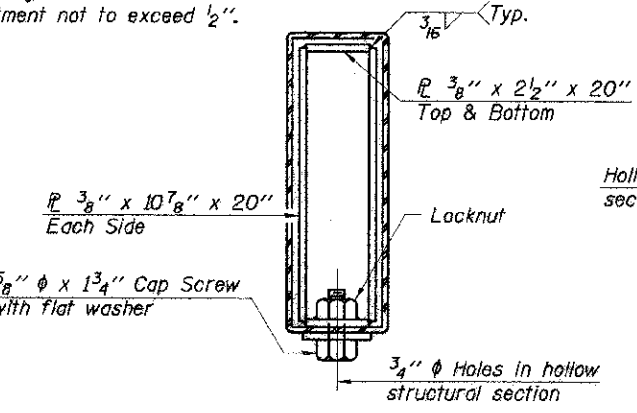


VIEW D-D

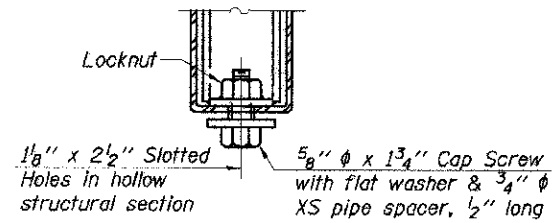


SECTION C-C

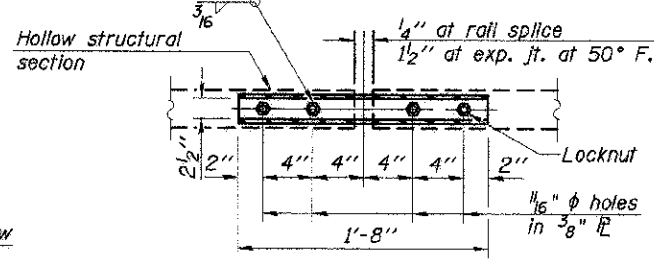
** Whenever the lower insert assemblies interfere with strand locations, the #3 bars shall be cut and adjusted in order to allow raising or lowering of the lower inserts. Maximum adjustment not to exceed 1/2".



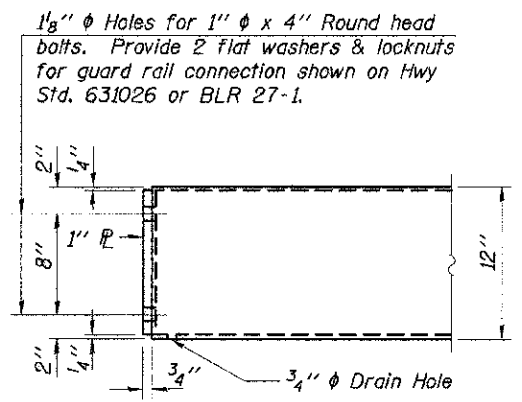
SECTIONS AT RAIL SPLICE



RAIL SPLICE CONNECTION AT EXPANSION JT.



PLAN-BOTT. SPLICE PL TYPICAL



END OF RAIL DETAILS

BILL OF MATERIAL

| Item | Unit | Quantity |
|-------------------------|------|----------|
| Steel Railing, Type S-1 | Foot | 123 |

STEEL RAILING, TYPE S-1

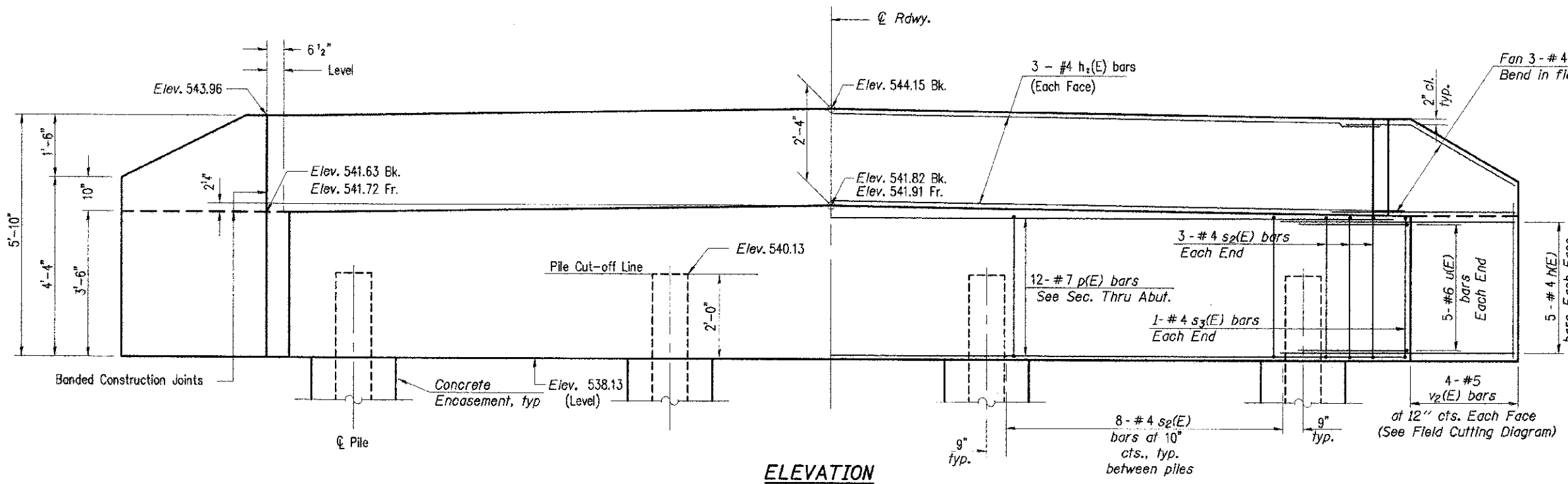
CHARLESTON ENGINEERING, INC.
 CONSULTING ENGINEERS
 105 NORTH KITCHELL
 P.O. BOX 387
 CLUNY, ILLINOIS 62450
 (618) 382-0736
ILLINOIS DEPARTMENT OF PROFESSIONAL REGULATION REGISTRATION #184-003613

**STEEL RAILING, TYPE S-1
 STRUCTURE NO. 025-3322**

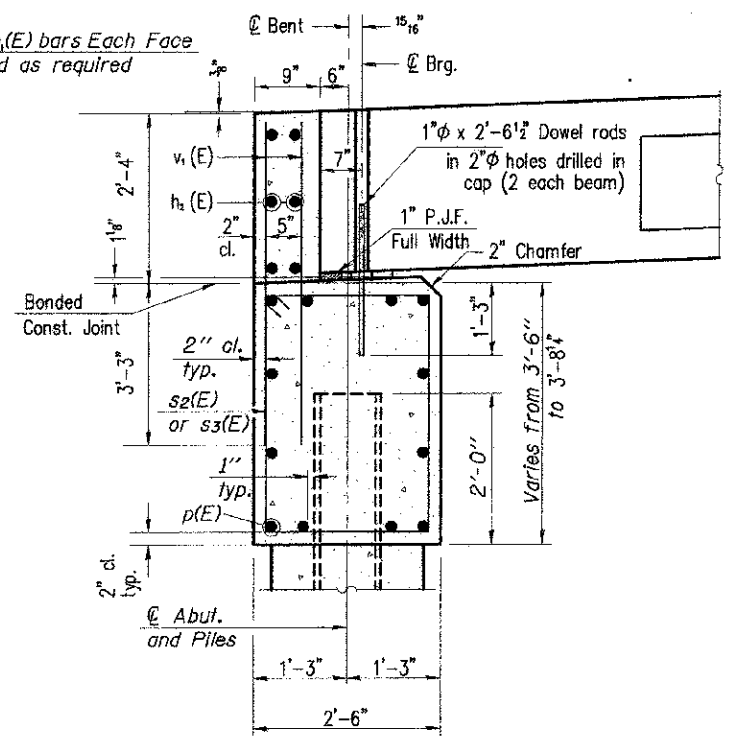
**T.R. 283
 OVER LIMESTONE CREEK**

**SECTION 10-15110-00-BR
 EFFINGHAM COUNTY**

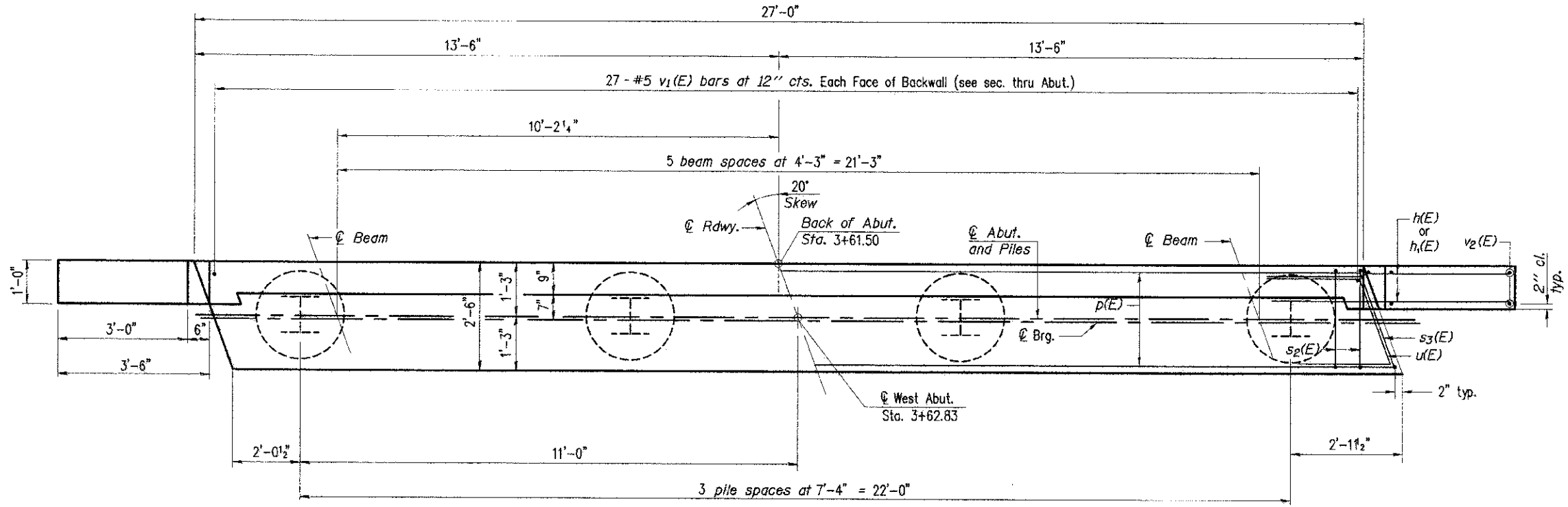
STATION 3+93.00



ELEVATION



SEC. THRU ABUT.
(At Right Angles)



PLAN
(Looking West)

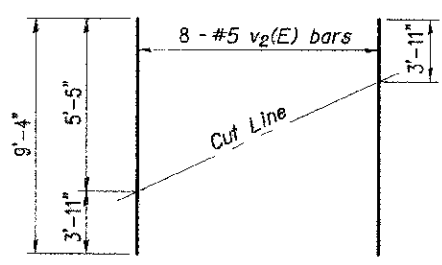
BILL OF MATERIAL

| Bar | No. | Size | Length | Shape |
|-----------------------------------|-----|---------|--------|-------|
| h(E) | 20 | #4 | 5'-0" | — |
| h1(E) | 12 | #4 | 5'-3" | — |
| h2(E) | 6 | #4 | 26'-8" | — |
| p(E) | 12 | #7 | 26'-8" | — |
| s2(E) | 30 | #4 | 11'-5" | □ |
| s3(E) | 2 | #4 | 11'-8" | □ |
| u(E) | 10 | #6 | 11'-3" | └ |
| v1(E) | 54 | #5 | 5'-5" | — |
| v2(E) | 8 | #5 | 9'-4" | — |
| Concrete Structures | | Cu. Yd. | 12.3 | |
| Reinforcement Bars, Epoxy Coated | | Pound | 1670 | |
| Furnishing Steel Piles HP 10 X 42 | | Foot | 135 | |
| Driving Piles | | Foot | 135 | |
| Test Pile, HP 10 X 42 | | Each | 1 | |
| Concrete Encasement | | Cu. Yd. | 1.4 | |

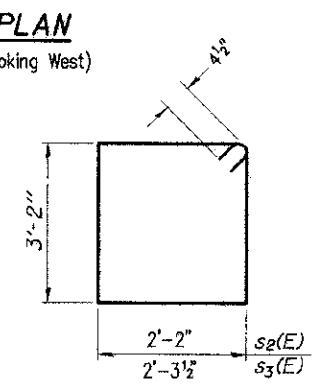
For details of piles see sheet 11 of 15.

PILE DATA

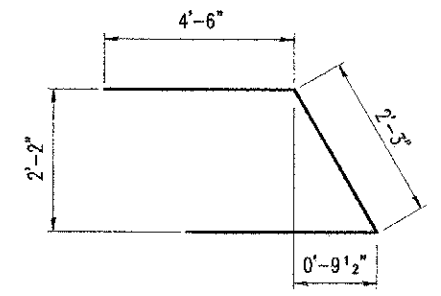
Type: HP 10 X 42
 Nominal Required Bearing: 334 kips
 Factored Resistance Available: 184 kips
 Est. Length: 45 Feet
 No. Production Piles: 3
 No. Test Piles: 1



FIELD CUTTING DIAGRAM
Order v2(E) full length. Cut as shown and use remainder of bars in opposite face.



BARS s2(E) & s3(E)



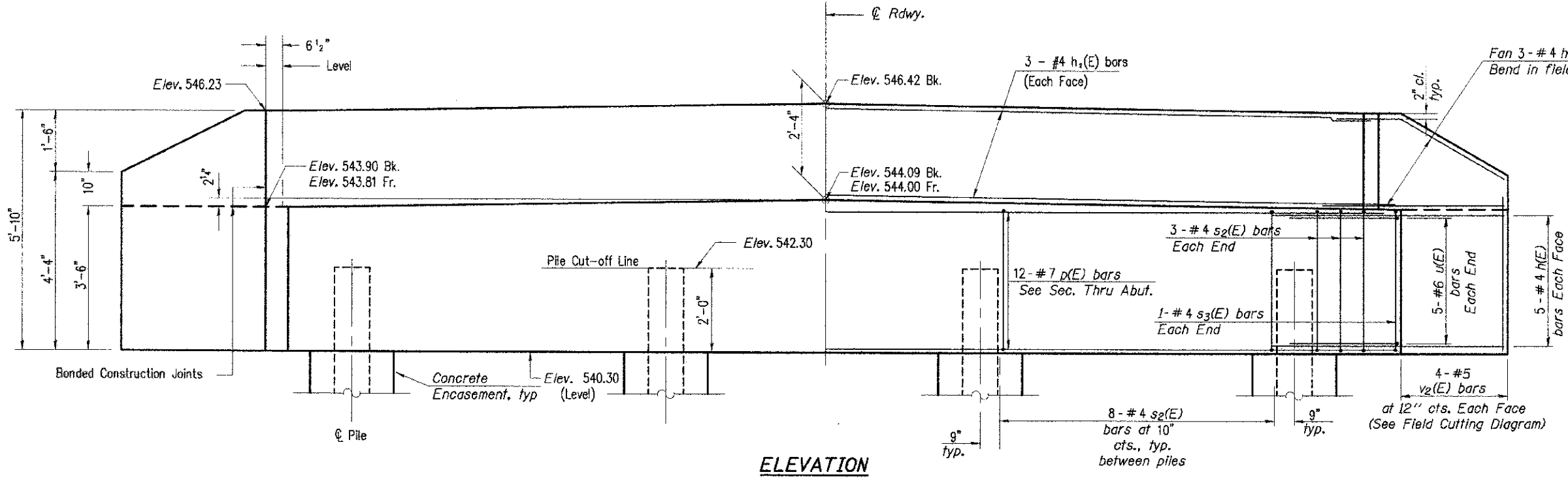
BAR u(E)

- Notes:
- The Backwall and the portion of the Wingwalls above the bonded construction joint shall be cast against the in-place beam.
 - Space reinforcement in cap to miss anchor bolts.
 - The test pile shall be driven to 110 percent of the Nominal Required Bearing indicated in the pile data information.

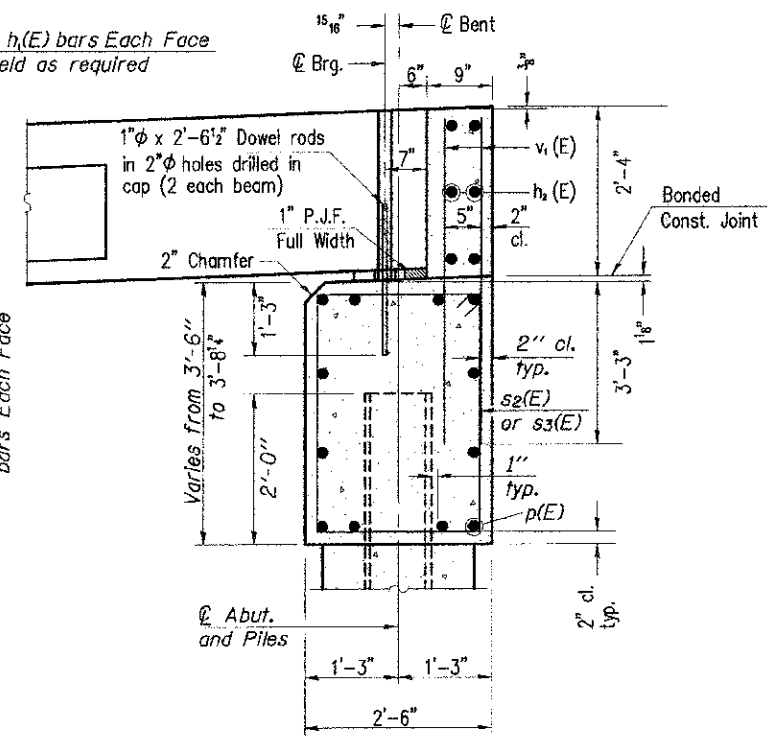
CHARLESTON ENGINEERING, INC.
 CONSULTING ENGINEERS
 105 NORTH MITCHELL
 P.O. BOX 397
 COLLEVILLE, ILLINOIS 62450
 (618) 392-0736
ILLINOIS DEPARTMENT OF PROFESSIONAL REGULATION REGISTRATION #184-063518

WEST ABUTMENT DETAILS
STRUCTURE NO. 025-3322
T.R. 283
OVER LIMESTONE CREEK

SECTION 10-15110-00-BR
EFFINGHAM COUNTY
STATION 3+93.00



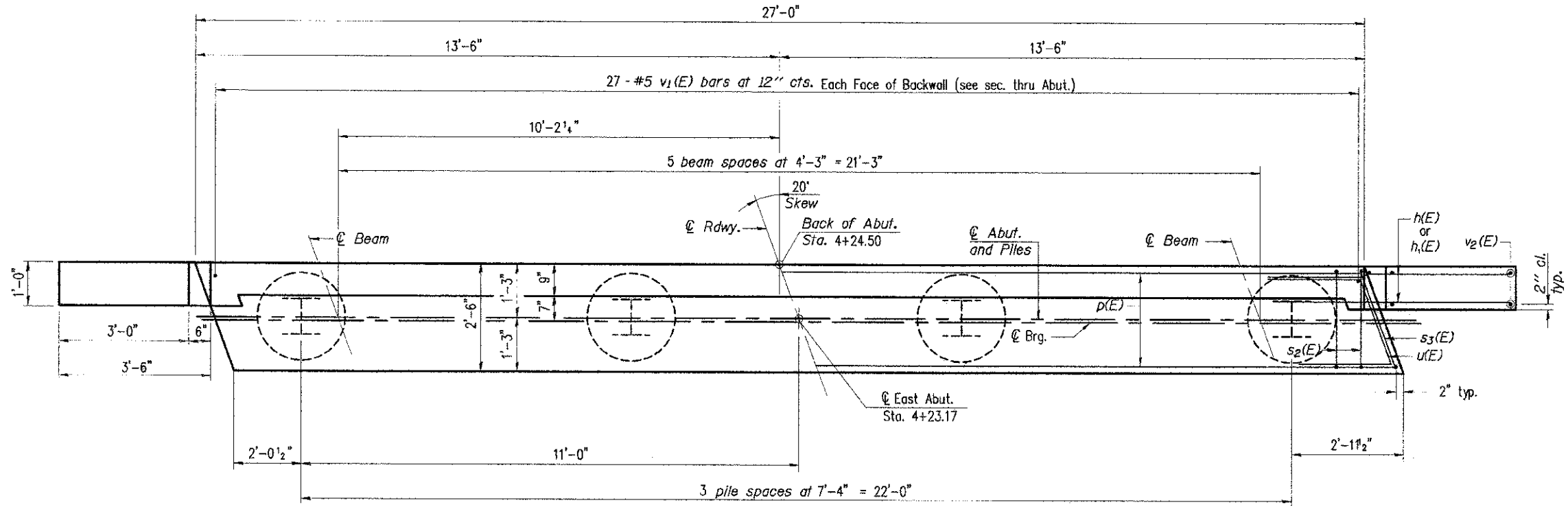
ELEVATION



SEC. THRU ABUT.
(At Right Angles)

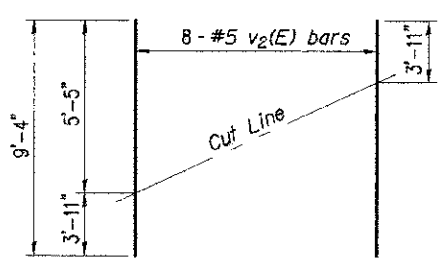
BILL OF MATERIAL

| Bar | No. | Size | Length | Shape |
|-----------------------------------|-----|------|---------|-------|
| h(E) | 20 | #4 | 5'-0" | — |
| h1(E) | 12 | #4 | 5'-3" | — |
| h2(E) | 6 | #4 | 26'-8" | — |
| p(E) | 12 | #7 | 26'-8" | — |
| s2(E) | 30 | #4 | 11'-5" | □ |
| s3(E) | 2 | #4 | 11'-8" | □ |
| u(E) | 10 | #6 | 11'-3" | ┘ |
| v1(E) | 54 | #5 | 5'-5" | — |
| v2(E) | 8 | #5 | 9'-4" | — |
| Concrete Structures | | | Cu. Yd. | 12.3 |
| Reinforcement Bars, Epoxy Coated | | | Pound | 1670 |
| Furnishing Steel Piles HP 10 X 42 | | | Foot | 180 |
| Driving Piles | | | Foot | 180 |
| Concrete Encasement | | | Cu. Yd. | 1.4 |

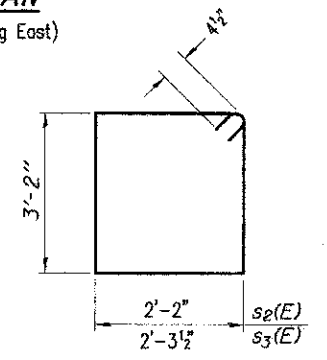


PLAN
(Looking East)

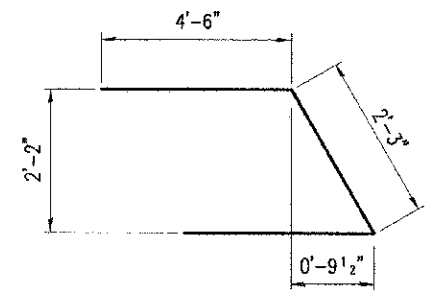
PILE DATA
 Type: HP 10 X 42
 Nominal Required Bearing: 334 kips
 Factored Resistance Available: 184 kips
 Est. Length: 45 Feet
 No. Production Piles: 4
 No. Test Piles: 0



FIELD CUTTING DIAGRAM
 Order v2(E) full length. Cut as shown and use remainder of bars in opposite face.



BARS s2(E) & s3(E)



BAR u(E)

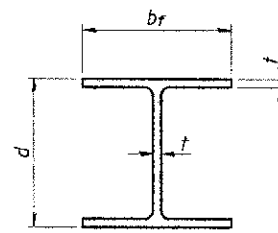
- Notes:
1. The Backwall and the portion of the Wingwalls above the bonded construction joint shall be cast against the in-place beam.
 2. Space reinforcement in cap to miss anchor bolts.

For details of piles see sheet 11 of 15.

CHARLESTON ENGINEERING, INC.
 CONSULTING ENGINEERS
 105 NORTH KITCHELL
 P.O. BOX 397
 OLNEY, ILLINOIS 62450
 (815) 392-0738
ILLINOIS DEPARTMENT OF PROFESSIONAL REGULATION REGISTRATION #184.002513

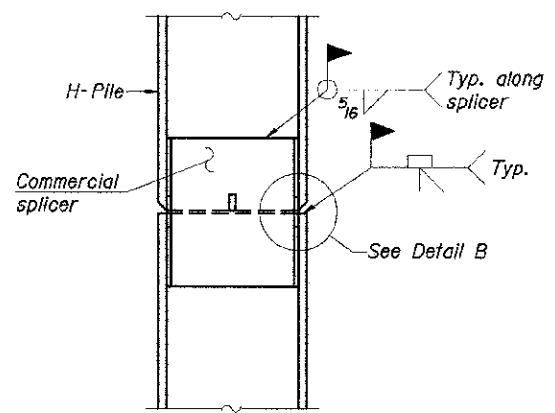
EAST ABUTMENT DETAILS
 STRUCTURE NO. 025-3322
 T.R. 283
 OVER LIMESTONE CREEK

SECTION 10-15110-00-BR
 EFFINGHAM COUNTY
 STATION 3+93.00

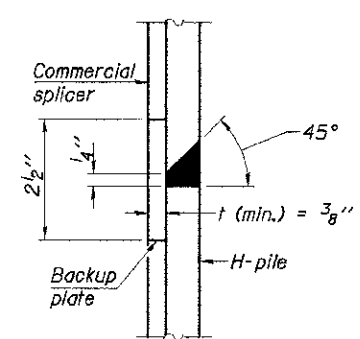


STEEL PILE TABLE

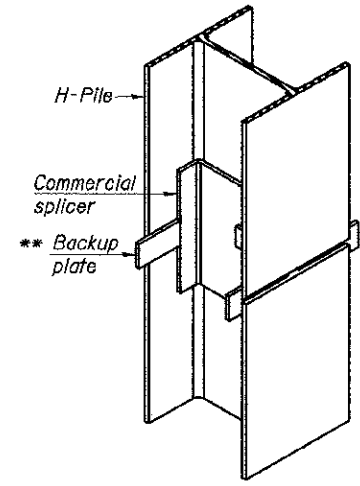
| Designation | Depth d | Flange width b _f | Web and Flange thickness t | Encasement diameter A |
|-------------|---------|-----------------------------|----------------------------|-----------------------|
| HP 14x117 | 14 1/4" | 14 7/8" | 3/16" | 30" |
| x102 | 14" | 14 3/4" | 1/16" | 30" |
| x89 | 13 7/8" | 14 3/4" | 5/8" | 30" |
| x73 | 13 5/8" | 14 5/8" | 1/2" | 30" |
| HP 12x84 | 12 1/4" | 12 1/4" | 1/16" | 24" |
| x74 | 12 1/8" | 12 1/4" | 5/8" | 24" |
| x63 | 12" | 12 1/8" | 1/2" | 24" |
| x53 | 11 3/4" | 12" | 7/16" | 24" |
| HP 10x57 | 10" | 10 1/4" | 9/16" | 24" |
| HP 10 x42 | 9 3/4" | 10 1/8" | 7/16" | 24" |
| HP 8x36 | 8" | 8 1/8" | 7/16" | 18" |



ELEVATION

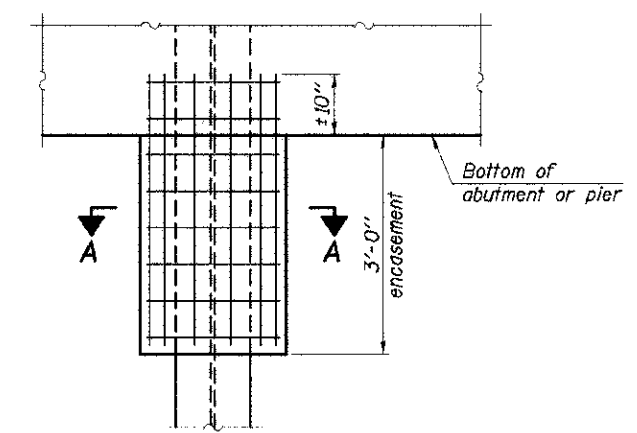


DETAIL "B"



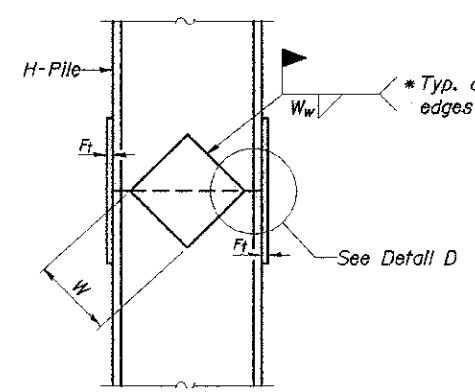
ISOMETRIC VIEW

WELDED COMMERCIAL SPLICE

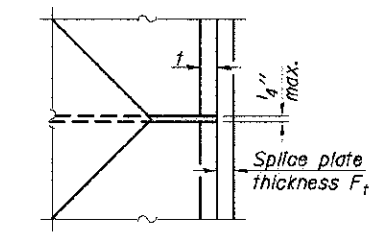


ELEVATION

PILE ENCASEMENT

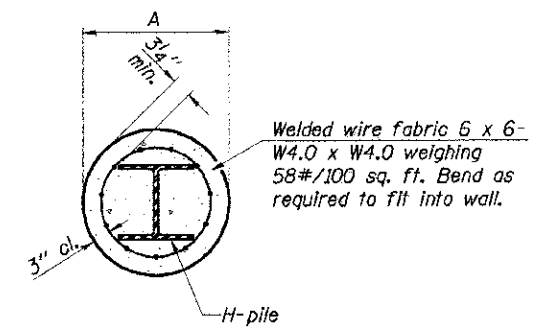


ELEVATION

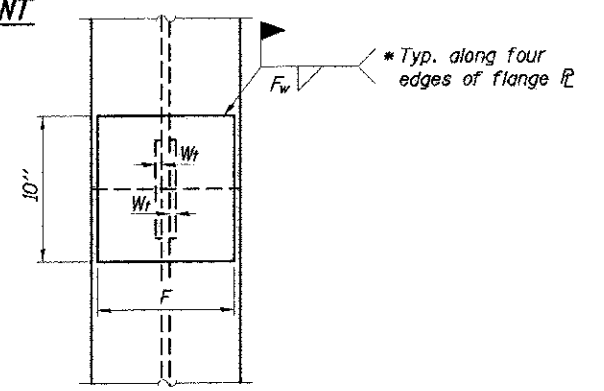


DETAIL D

WELDED PLATE FIELD SPLICE

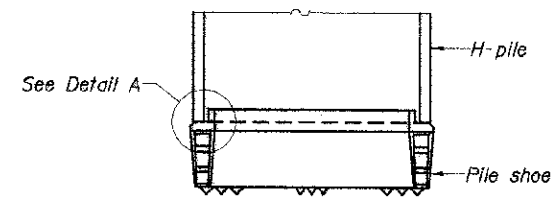


SECTION A-A

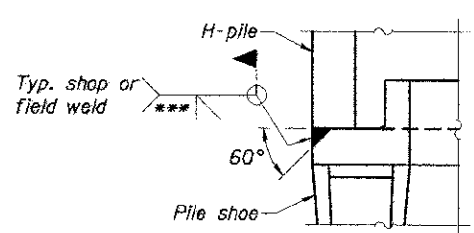


END VIEW

| Designation | F | F _t | F _w | W | W _t | W _w |
|-------------|---------|----------------|----------------|--------|----------------|----------------|
| HP 14x117 | 12 1/2" | 1" | 7/8" | 7 3/4" | 5 1/2" | 1/2" |
| x102 | 12 1/2" | 7/8" | 3/4" | 7 3/4" | 5 1/2" | 1/2" |
| x89 | 12 1/2" | 3/4" | 1/16" | 7 3/4" | 5 1/2" | 1/2" |
| x73 | 12 1/2" | 5/8" | 9/16" | 7 3/4" | 5 1/2" | 1/2" |
| HP 12x84 | 10" | 7/8" | 1/16" | 6 1/2" | 5 1/2" | 1/2" |
| x74 | 10" | 7/8" | 1/16" | 6 1/2" | 5 1/2" | 1/2" |
| x63 | 10" | 5/8" | 1/2" | 6 1/2" | 1/2" | 3/8" |
| x53 | 10" | 5/8" | 1/2" | 6 1/2" | 1/2" | 3/8" |
| HP 10x57 | 8" | 3/4" | 9/16" | 5 1/4" | 1/2" | 3/8" |
| HP 10 x42 | 8" | 5/8" | 9/16" | 5 1/4" | 1/2" | 3/8" |
| HP 8x36 | 7" | 5/8" | 7/16" | 4 1/4" | 1/2" | 3/8" |

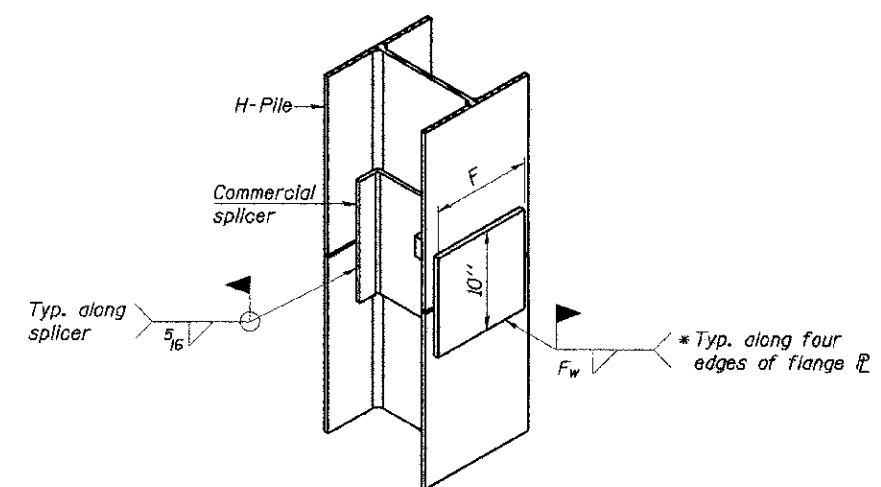


ELEVATION



DETAIL A

H-PILE SHOE ATTACHMENT



ISOMETRIC VIEW

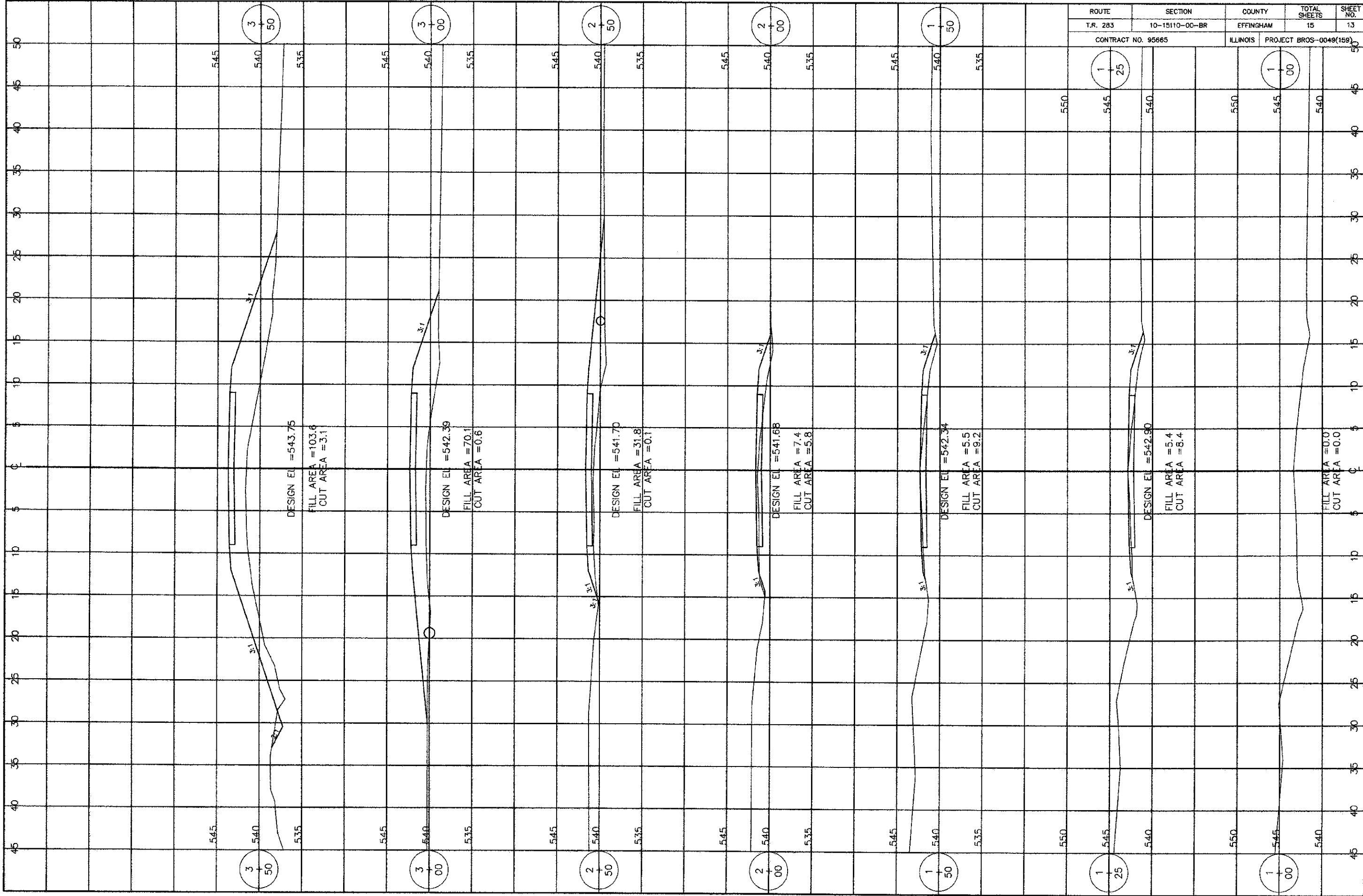
WELDED COMMERCIAL SPLICE ALTERNATE

- * Interrupt welds 1/4" from end of web and/or each flange.
- ** Remove portions of backup plates that extend outside the flanges.
- *** Weld size per pile shoe manufacturer (5/16" min.).

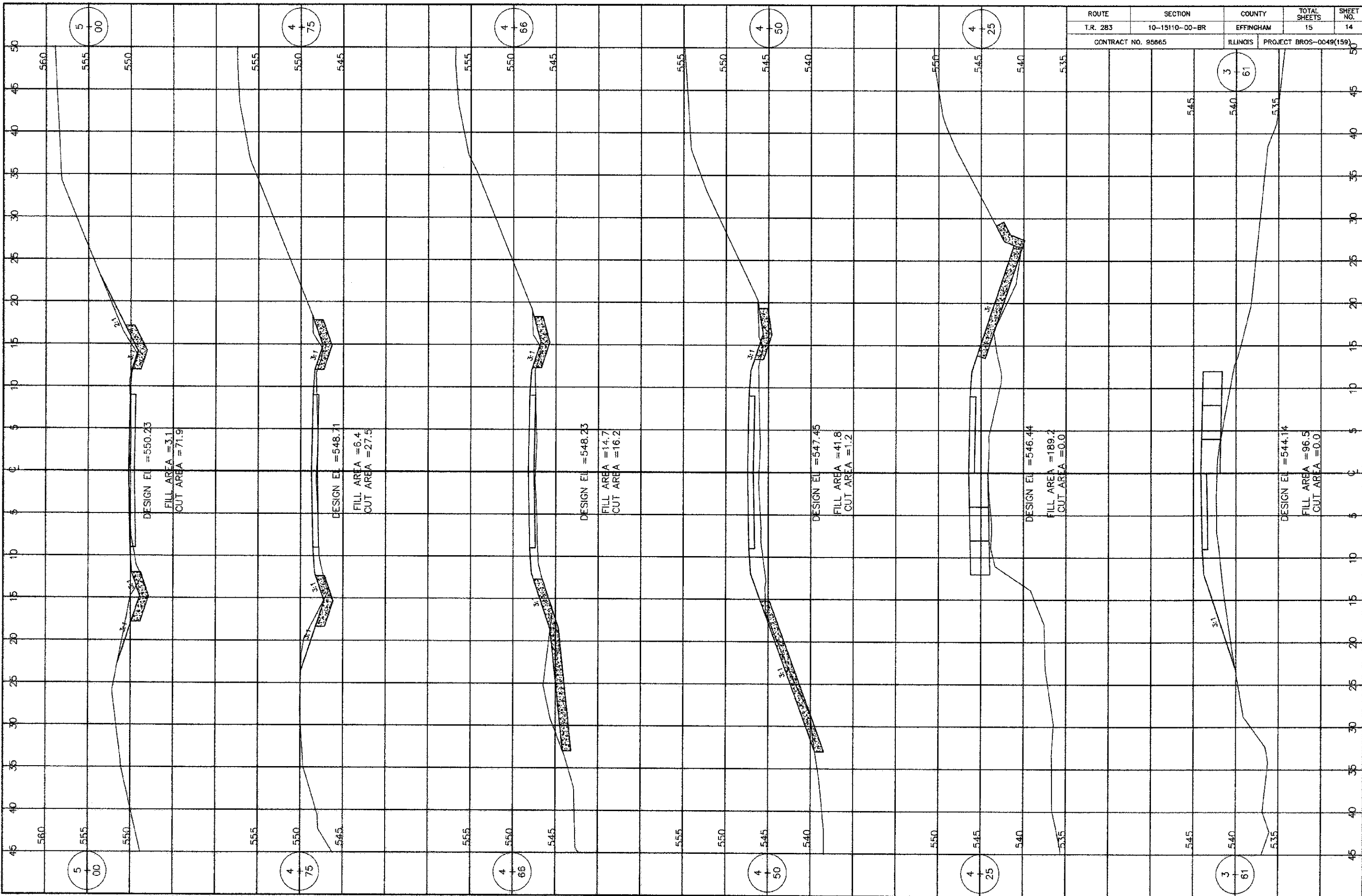
Note:
The steel H-piles shall be according to AASHTO M270 Grade 50.

CHARLESTON ENGINEERING, INC.
CONSULTING ENGINEERS
105 NORTH KITCHELL
P.O. BOX 387
OLNEY, ILLINOIS 62450
(618) 352-0733
ILLINOIS DEPARTMENT OF PROFESSIONAL REGULATION REGISTRATION #184103515

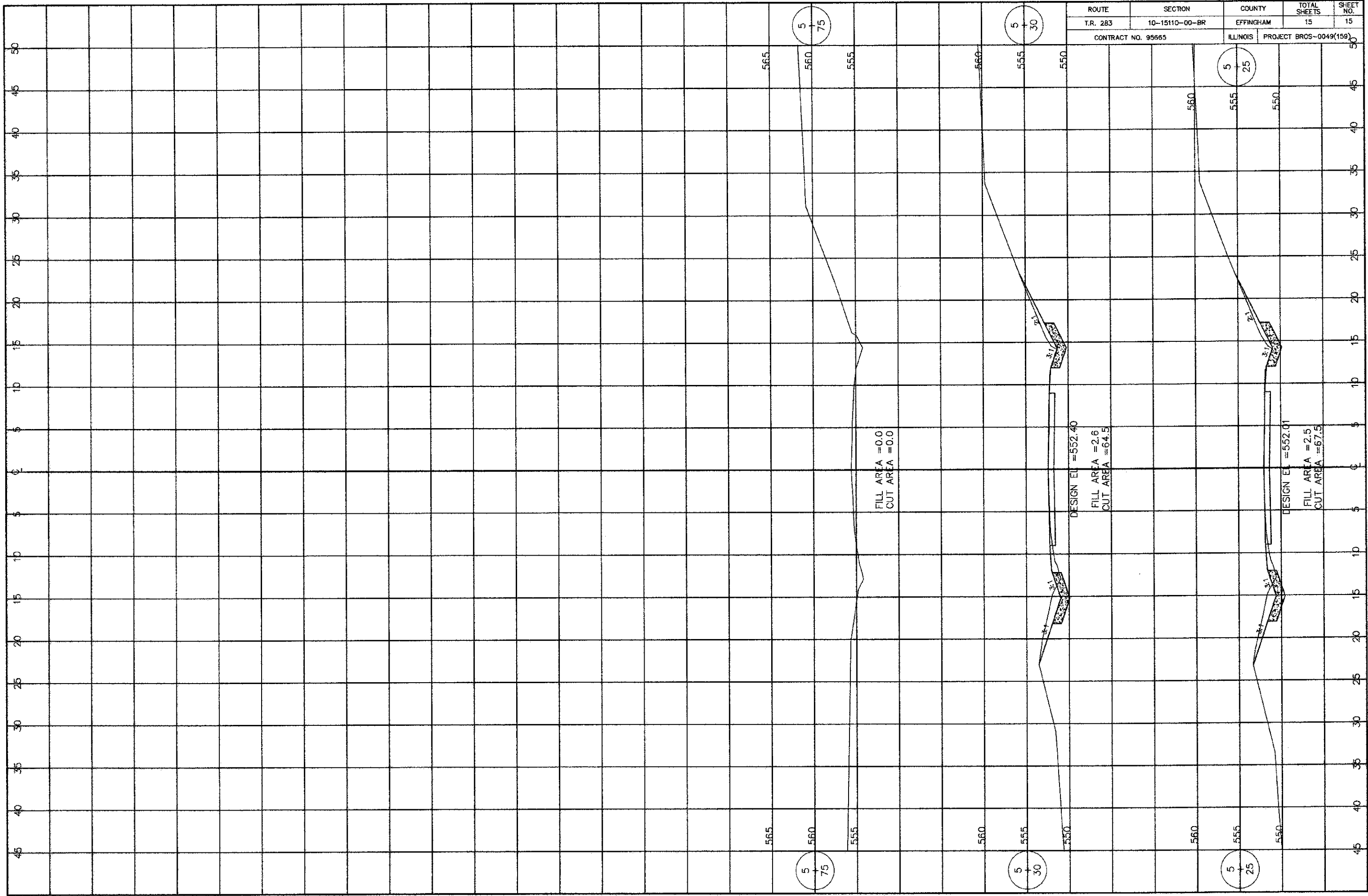
PILE DETAILS
STRUCTURE NO. 025-3322
T.R. 283
OVER LIMESTONE CREEK
SECTION 10-15110-00-BR
EFFINGHAM COUNTY
STATION 3+93.00



| ROUTE | SECTION | COUNTY | TOTAL SHEETS | SHEET NO. |
|--------------------|----------------|-----------|------------------------|-----------|
| T.R. 283 | 10-15110-00-BR | EFFINGHAM | 15 | 13 |
| CONTRACT NO. 95665 | | ILLINOIS | PROJECT BROS-0049(159) | |



| ROUTE | SECTION | COUNTY | TOTAL SHEETS | SHEET NO. |
|--------------------|----------------|-----------|------------------------|-----------|
| T.R. 283 | 10-15110-00-BR | EFFINGHAM | 15 | 14 |
| CONTRACT NO. 95665 | | ILLINOIS | PROJECT BROS-0049(159) | |



| | | | | |
|--------------------|----------------|-----------|------------------------|-----------|
| ROUTE | SECTION | COUNTY | TOTAL SHEETS | SHEET NO. |
| T.R. 283 | 10-15110-00-BR | EFFINGHAM | 15 | 15 |
| CONTRACT NO. 95665 | | ILLINOIS | PROJECT BROS-0049(159) | |

FILL AREA = 0.0
CUT AREA = 0.0

DESIGN EL = 552.40
FILL AREA = 2.6
CUT AREA = 64.5

DESIGN EL = 552.01
FILL AREA = 2.5
CUT AREA = 67.5

5
75

5
30

5
25

5
75

5
30

5
25