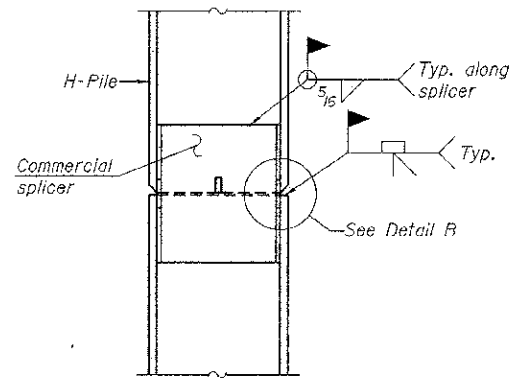
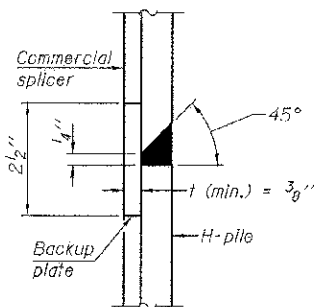


**STEEL PILE TABLE**

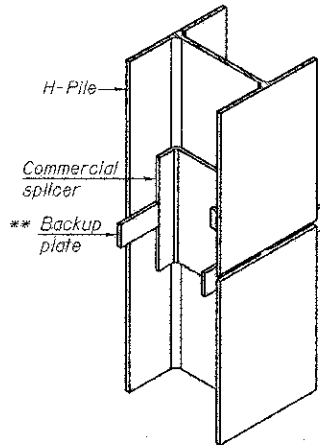
Designation	Depth d	Flange width br	Web and Flange thickness t	Encasement diameter A
HP 14x117	14 <sup>1</sup> / <sub>4</sub> "	14 <sup>7</sup> / <sub>8</sub> "	1 <sup>5</sup> / <sub>16</sub> "	30"
x102	14"	14 <sup>3</sup> / <sub>4</sub> "	1 <sup>1</sup> / <sub>16</sub> "	30"
x89	13 <sup>7</sup> / <sub>8</sub> "	14 <sup>3</sup> / <sub>4</sub> "	5 <sup>5</sup> / <sub>8</sub> "	30"
x73	13 <sup>5</sup> / <sub>8</sub> "	14 <sup>5</sup> / <sub>8</sub> "	1 <sup>1</sup> / <sub>2</sub> "	30"
HP 12x84	12 <sup>1</sup> / <sub>4</sub> "	12 <sup>1</sup> / <sub>4</sub> "	1 <sup>1</sup> / <sub>16</sub> "	24"
x74	12 <sup>5</sup> / <sub>8</sub> "	12 <sup>1</sup> / <sub>4</sub> "	5 <sup>5</sup> / <sub>8</sub> "	24"
x63	12"	12 <sup>1</sup> / <sub>2</sub> "	1 <sup>1</sup> / <sub>2</sub> "	24"
x53	11 <sup>3</sup> / <sub>4</sub> "	12"	7 <sup>1</sup> / <sub>16</sub> "	24"
HP 10x57	10"	10 <sup>1</sup> / <sub>4</sub> "	9 <sup>1</sup> / <sub>16</sub> "	24"
x42	9 <sup>3</sup> / <sub>4</sub> "	10 <sup>1</sup> / <sub>8</sub> "	7 <sup>1</sup> / <sub>16</sub> "	24"
HP 8x36	8"	8 <sup>5</sup> / <sub>8</sub> "	7 <sup>1</sup> / <sub>16</sub> "	18"



**ELEVATION**

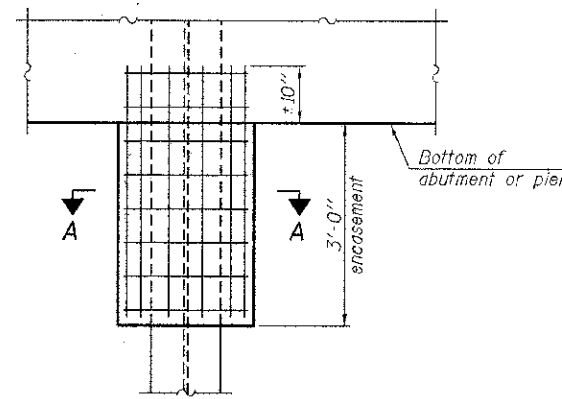


**DETAIL "B"**



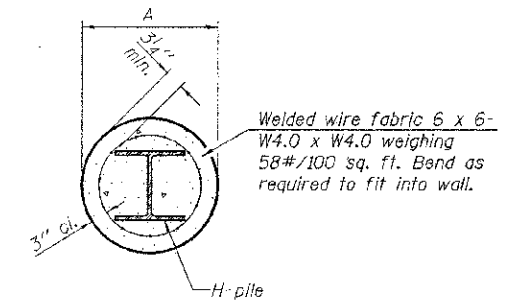
**ISOMETRIC VIEW**

**WELDED COMMERCIAL SPLICE**



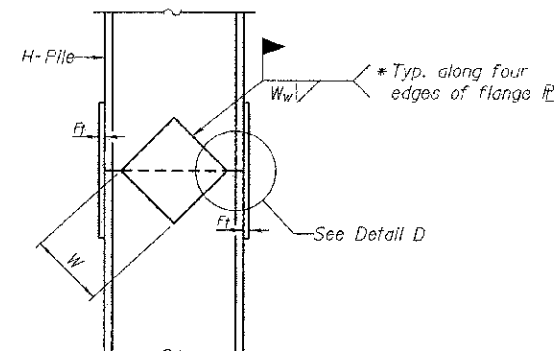
**ELEVATION**

**PILE ENCASEMENT**

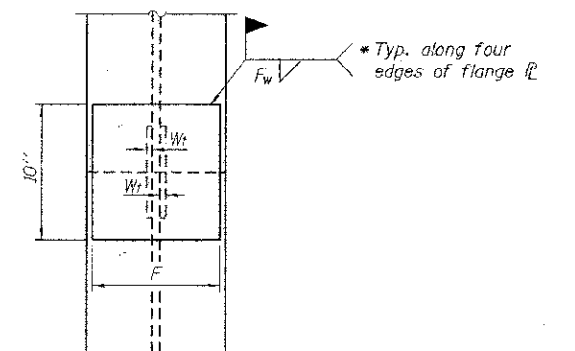


**SECTION A-A**

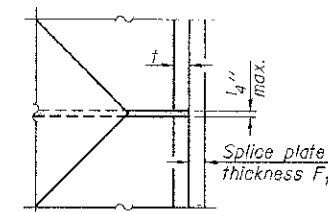
Note: Forms for encasement may be omitted when soil conditions permit.



**ELEVATION**



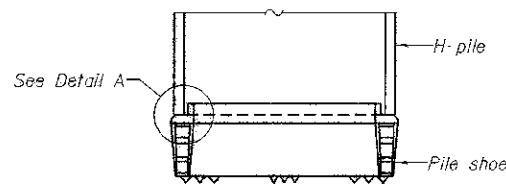
**END VIEW**



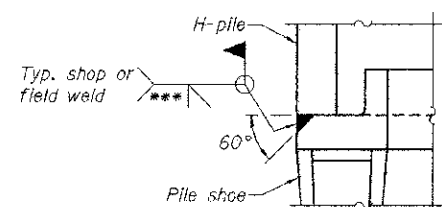
**DETAIL D**

**WELDED PLATE FIELD SPLICE**

Designation	F	F <sub>t</sub>	F <sub>w</sub>	W	W <sub>t</sub>	W <sub>w</sub>
HP 14x117	12 <sup>1</sup> / <sub>2</sub> "	1"	7 <sup>8</sup> / <sub>8</sub> "	7 <sup>3</sup> / <sub>4</sub> "	5 <sup>8</sup> / <sub>8</sub> "	1 <sup>1</sup> / <sub>2</sub> "
x102	12 <sup>1</sup> / <sub>2</sub> "	7 <sup>8</sup> / <sub>8</sub> "	3 <sup>4</sup> / <sub>4</sub> "	7 <sup>3</sup> / <sub>4</sub> "	5 <sup>8</sup> / <sub>8</sub> "	1 <sup>1</sup> / <sub>2</sub> "
x89	12 <sup>1</sup> / <sub>2</sub> "	3 <sup>4</sup> / <sub>4</sub> "	11 <sup>16</sup> / <sub>16</sub> "	7 <sup>3</sup> / <sub>4</sub> "	5 <sup>8</sup> / <sub>8</sub> "	1 <sup>1</sup> / <sub>2</sub> "
x73	12 <sup>1</sup> / <sub>2</sub> "	5 <sup>8</sup> / <sub>8</sub> "	9 <sup>16</sup> / <sub>16</sub> "	7 <sup>3</sup> / <sub>4</sub> "	5 <sup>8</sup> / <sub>8</sub> "	1 <sup>1</sup> / <sub>2</sub> "
HP 12x84	10"	7 <sup>8</sup> / <sub>8</sub> "	11 <sup>16</sup> / <sub>16</sub> "	6 <sup>1</sup> / <sub>2</sub> "	5 <sup>8</sup> / <sub>8</sub> "	1 <sup>1</sup> / <sub>2</sub> "
x74	10"	7 <sup>8</sup> / <sub>8</sub> "	11 <sup>16</sup> / <sub>16</sub> "	6 <sup>1</sup> / <sub>2</sub> "	5 <sup>8</sup> / <sub>8</sub> "	1 <sup>1</sup> / <sub>2</sub> "
x63	10"	5 <sup>8</sup> / <sub>8</sub> "	1 <sup>2</sup> / <sub>2</sub> "	6 <sup>1</sup> / <sub>2</sub> "	1 <sup>2</sup> / <sub>2</sub> "	3 <sup>8</sup> / <sub>8</sub> "
x53	10"	5 <sup>8</sup> / <sub>8</sub> "	1 <sup>2</sup> / <sub>2</sub> "	6 <sup>1</sup> / <sub>2</sub> "	1 <sup>2</sup> / <sub>2</sub> "	3 <sup>8</sup> / <sub>8</sub> "
HP 10x57	8"	3 <sup>4</sup> / <sub>4</sub> "	9 <sup>16</sup> / <sub>16</sub> "	5 <sup>1</sup> / <sub>4</sub> "	1 <sup>2</sup> / <sub>2</sub> "	3 <sup>8</sup> / <sub>8</sub> "
x42	8"	5 <sup>8</sup> / <sub>8</sub> "	9 <sup>16</sup> / <sub>16</sub> "	5 <sup>1</sup> / <sub>4</sub> "	1 <sup>2</sup> / <sub>2</sub> "	3 <sup>8</sup> / <sub>8</sub> "
HP 8x36	7"	5 <sup>8</sup> / <sub>8</sub> "	7 <sup>16</sup> / <sub>16</sub> "	4 <sup>1</sup> / <sub>4</sub> "	1 <sup>2</sup> / <sub>2</sub> "	3 <sup>8</sup> / <sub>8</sub> "

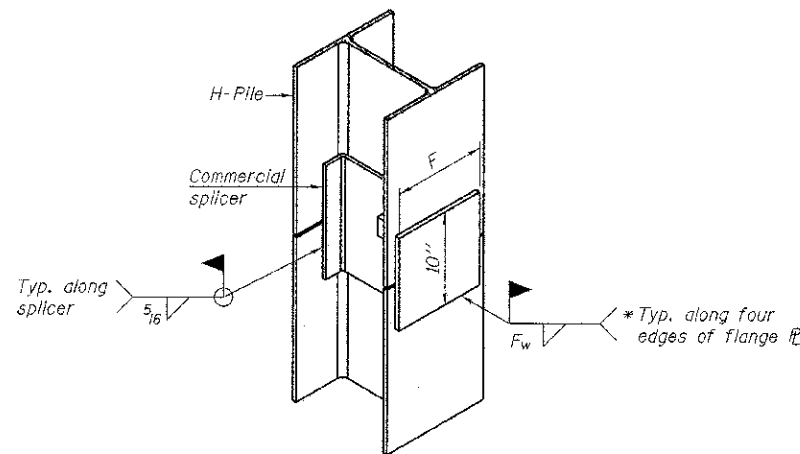


**ELEVATION**



**DETAIL A**

**H-PILE SHOE ATTACHMENT**



**ISOMETRIC VIEW**

**WELDED COMMERCIAL SPLICE ALTERNATE**

- \* Interrupt welds 1/4" from end of web and/or each flange.
- \*\* Remove portions of backup plates that extend outside the flanges.
- \*\*\* Weld size per pile shoe manufacturer (5/16" min.).

Note: The steel H-piles shall be according to AASHTO M270 Grade 50.

F-HP

7-1-10

FILE NAME * 110293-shr-bridge.dgn	USER NAME *	DESIGNED - D.W.T.	REVISED -	<b>STATE OF ILLINOIS JASPER COUNTY HIGHWAY DEPARTMENT</b>	<b>HP PILE DETAILS STRUCTURE NO. 040-3264</b>	C.H.	SECTION	COUNTY	TOTAL SHEETS	SHEET NO.
<b>HAMPTON, LENZINI AND RENWICK, INC.</b> 2003 STEVENSON AVENUE, SUITE 201 SPRINGFIELD, ILLINOIS 62705	PLLOT SCALE =	CHECKED - A.S.L.	REVISED -			14	11-00118-00-BR	JASPER	12	10
<b>ILLINOIS PROFESSIONAL DESIGN FIRM</b> 137 PE 7156 CORP. 164301238	PLLOT DATE = 4/1/2012	DRAWN - D.A.B.	REVISED -			CONTRACT NO. 95685				
		CHECKED - S.W.M.	REVISED -			ILLINOIS FED. AID PROJECT				

SHEET NO. 7 OF 9 SHEETS