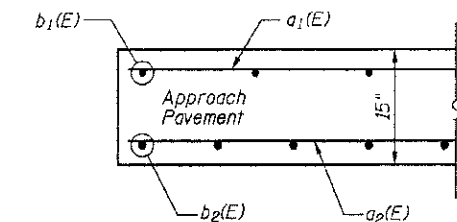
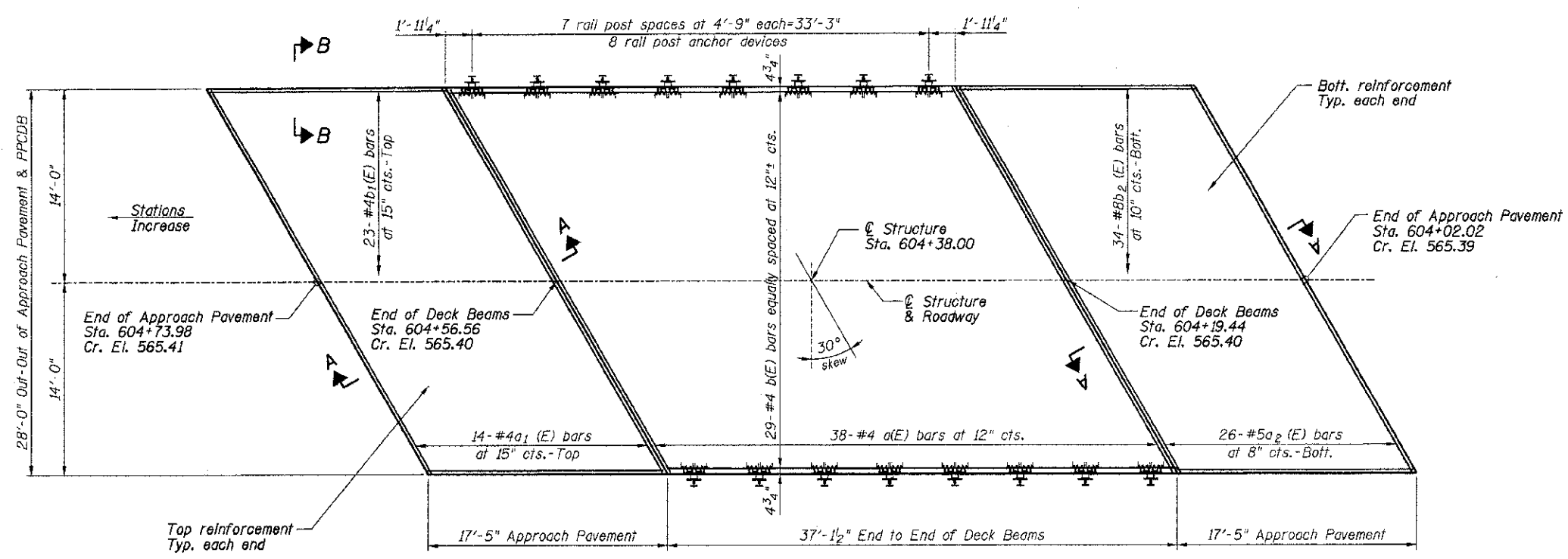


SUPERSTRUCTURE

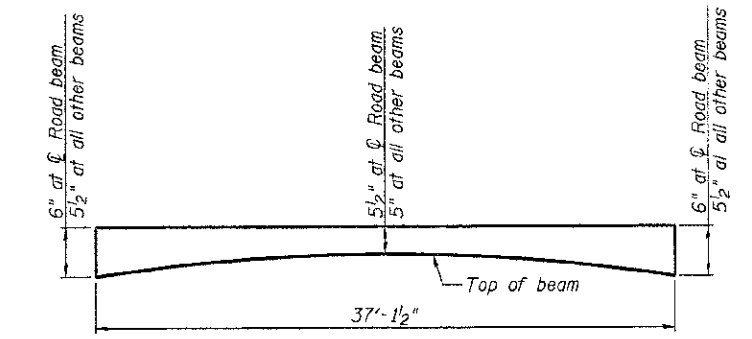
BILL OF MATERIAL

(CWS and Two Approach Pavements)

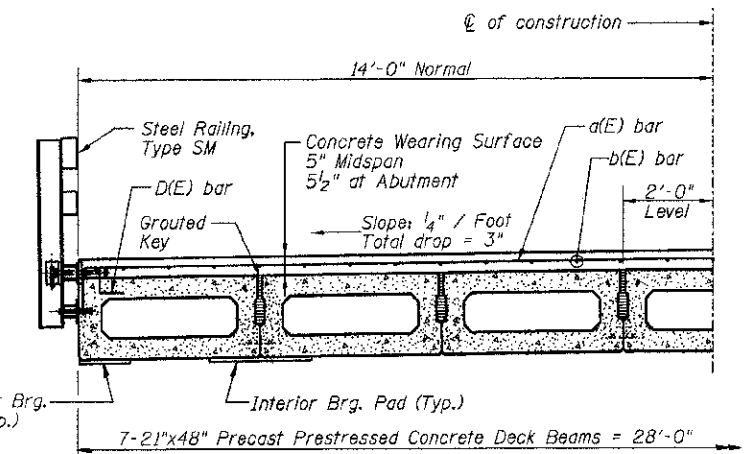
Bar	No.	Size	Length	Shape
a(E)	38	#4	33'-0"	
a1(E)	28	#4	32'-0"	
a2(E)	52	#5	32'-0"	
b(E)	29	#4	36'-10"	
b1(E)	46	#4	17'-1"	
b2(E)	68	#8	18'-11"	
Bridge Approach Pavement		Sq. Yd.	108	
Concrete Wearing Surface, 5"		Sq. Yd.	115.5	
Reinforcement Bars, Epoxy Coated		Pound	7840	



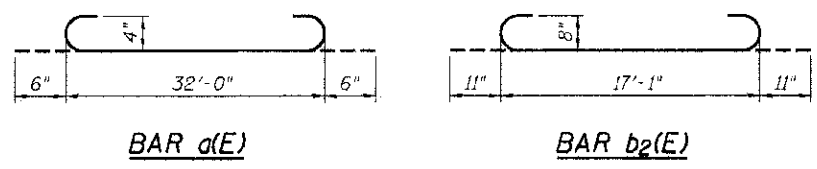
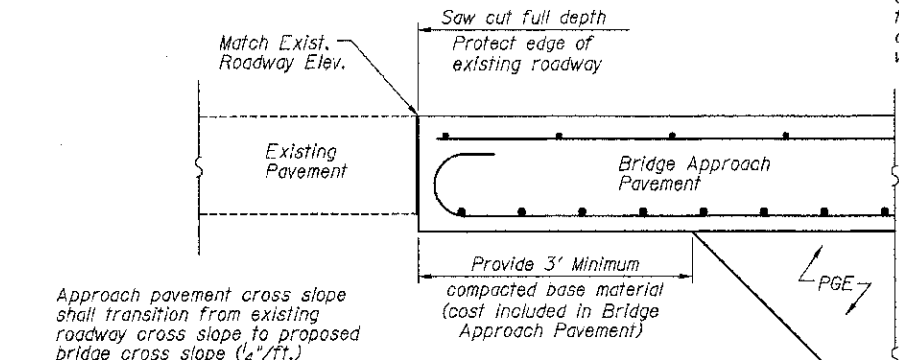
PLAN



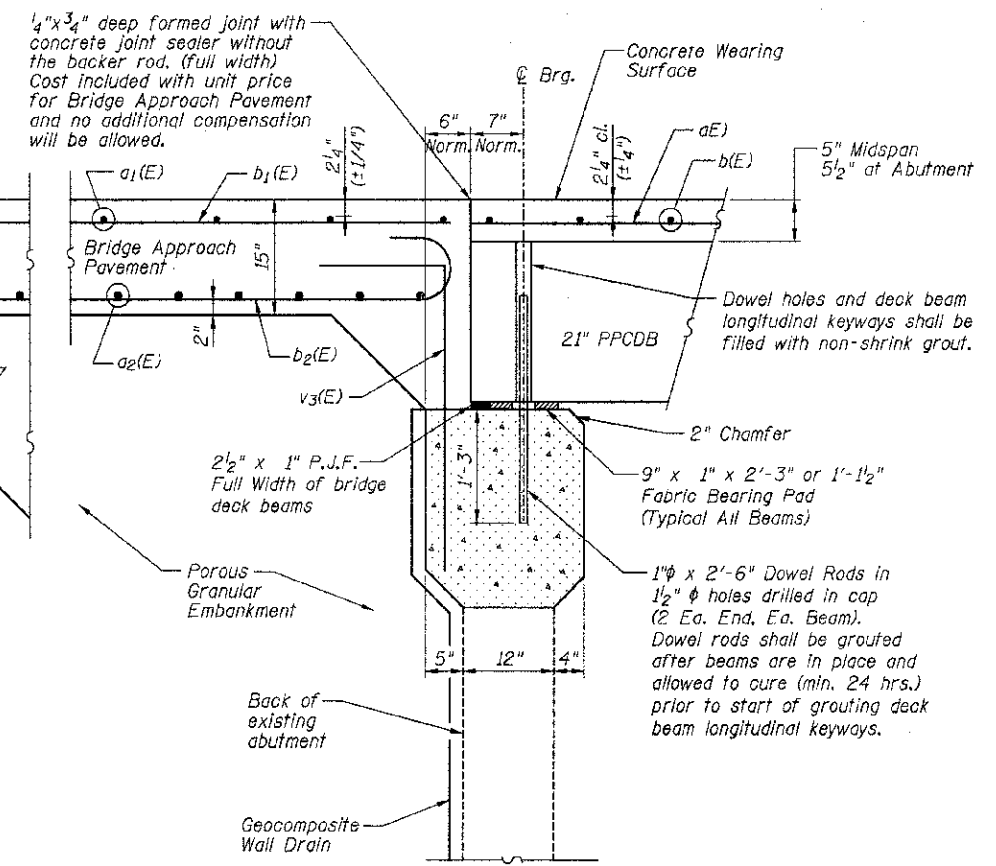
ANTICIPATED CONCRETE WEARING SURFACE PROFILE
(For information only)



HALF CROSS SECTION
See Sheet 8 for the details showing the mounting of posts and rails to the PPCDB.



Notes:
See Sheets 6 & 7 for Superstructure Beam Details.
Concrete wearing surface shall be placed prior to construction of the Approach Pavements.
Spacing of a(E) bars shall be measured along the ϕ of structure.
See Sheet 7 for fabric bearing pad details.



SECTION A-A
(Dimensions are at Rt. L's)