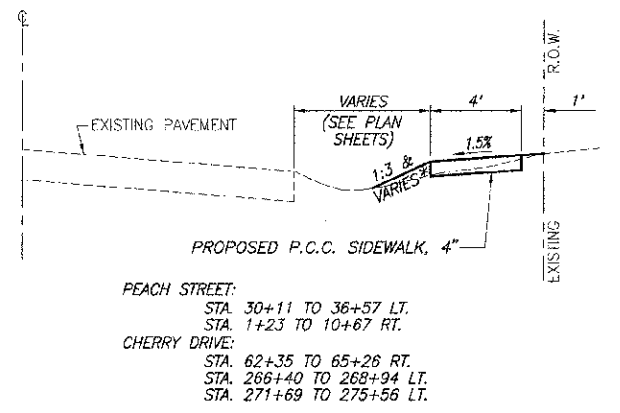
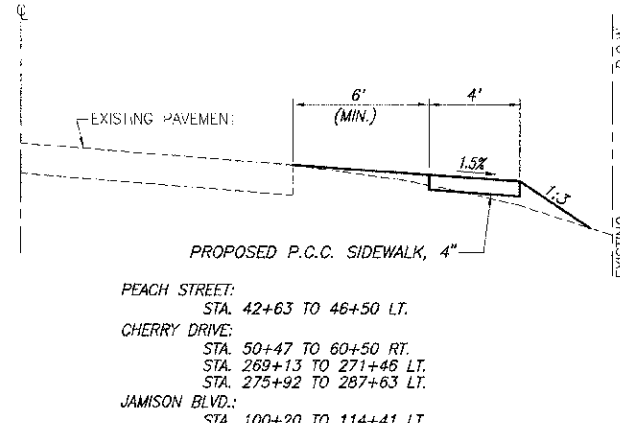


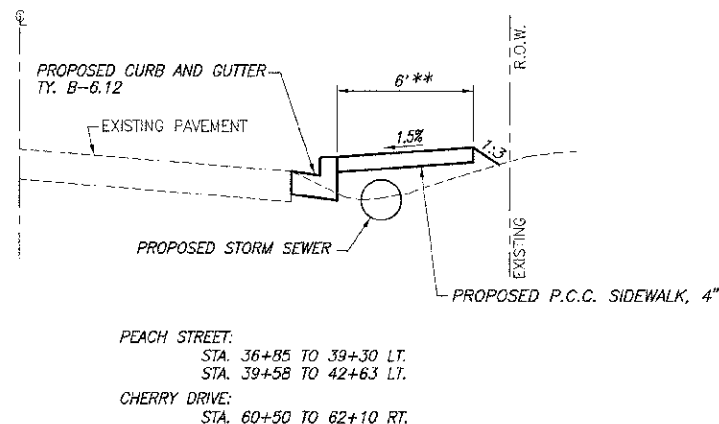
F.A.U. ROUTE	SECTION	COUNTY	TOTAL SHEETS	SHEET NUMBER
N/A	12-00135-00-SW	JEFFERSON	32	3
ILLINOIS CONTRACT			99485	



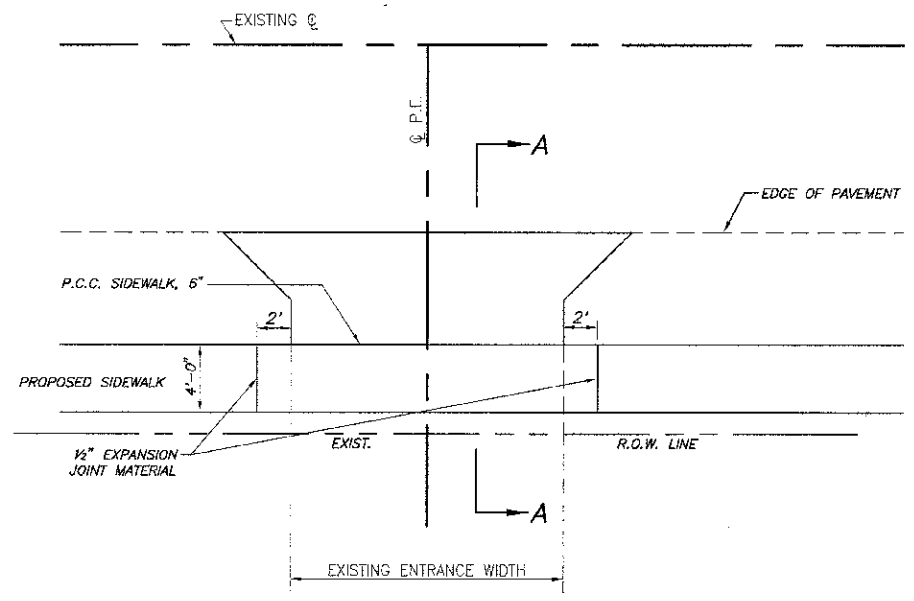
SIDEWALK TYPICAL SECTION
Scale: 1"=4' (Horizontal)
1"=2' (Vertical)
* SEE CROSS SECTIONS FOR VARIABLE EARTH GRADES.



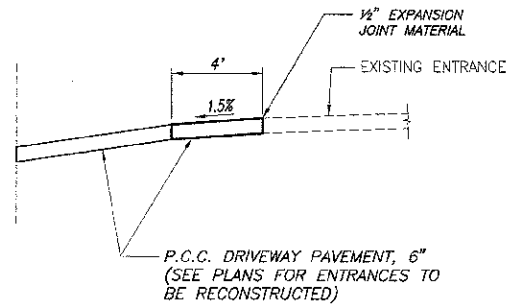
SIDEWALK TYPICAL SECTION
Scale: 1"=4' (Horizontal)
1"=2' (Vertical)



SIDEWALK TYPICAL SECTION
Scale: 1"=4' (Horizontal)
1"=2' (Vertical)
** IN SELECT AREAS SIDEWALK WIDTH WILL BE REDUCED TO 5' TO AVOID ROADSIDE OBSTACLES.

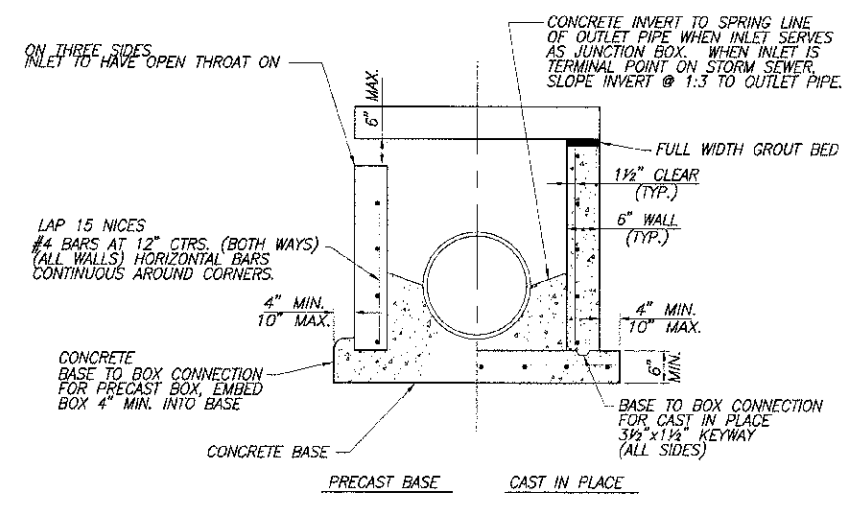


P.E. DETAIL
N.T.S.

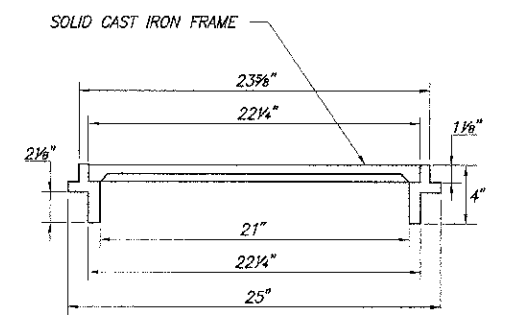


NOTE:
SIDEWALK WILL BE CONSTRUCTED IN ALL AGGREGATE ENTRANCES AND IN ALL OTHER ENTRANCES NOT MEETING THE 2% MAXIMUM CROSS SLOPE.

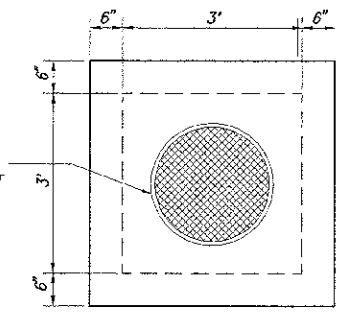
SECTION A-A
N.T.S.



END VIEW



FRAME AND CLOSED LID



PRECAST LID DETAIL

FRAME AND CLOSED LID (SEE DETAIL) INCLUDED IN THE COST OF THE INLET

INLETS, SPECIAL
N.T.S.