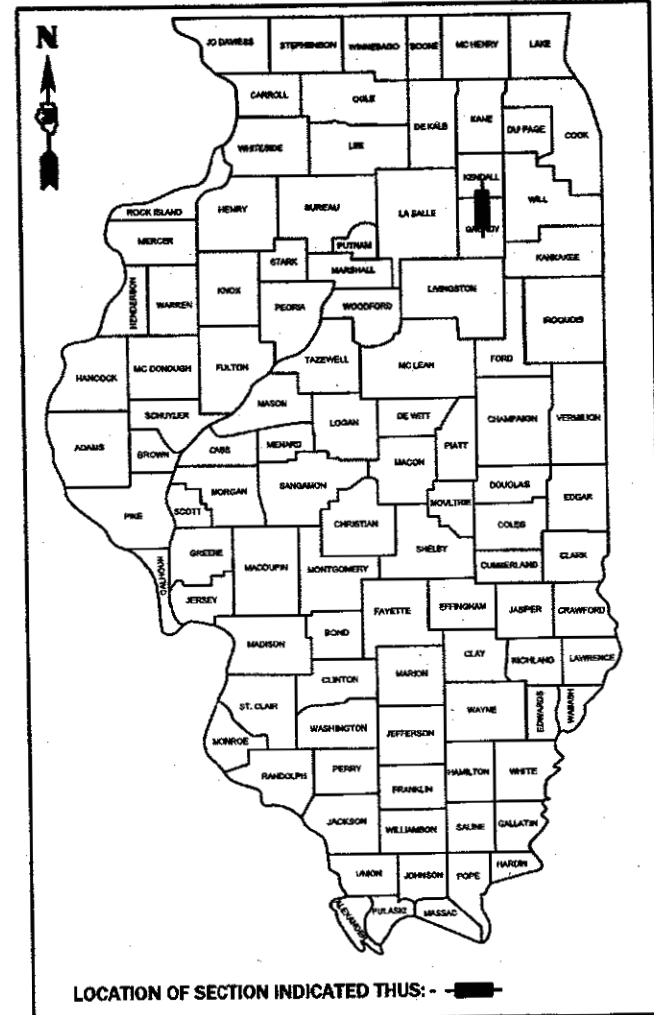


**STATE OF ILLINOIS
DEPARTMENT OF TRANSPORTATION**

**PROPOSED
HIGHWAY PLANS**

**F.A.I. ROUTE 80 (I-80)
SECTION (32-3)K & PP
PROJECT
PAVEMENT PATCHING
IL 47 MAINLINE
AND I-80 RAMPS
GRUNDY COUNTY**

D-93-073-18



- INDEX OF SHEETS** 08-03-2018 LETTING-ITEM 022
1. COVER SHEET
 2. GENERAL NOTES
 - 3 - 4. SUMMARY OF QUANTITIES
 - 5 - 6. TYPICAL SECTIONS
 - 7 - 8. SCHEDULES
 - 9 - 10. CLASS A PATCHING DETAILS
 - 11 - 12. CLASS B PATCHING DETAILS
 13. TEMPORARY INFORMATION SIGNING

- STANDARDS**
- 000001-06 STANDARD SYMBOLS, ABBREVIATIONS AND PATTERNS
 - 001001-02 AREAS OF REINFORCEMENT BARS
 - 001006 DECIMAL OF AN INCH AND OF A FOOT
 - 701001-02 OFF-ROAD OPERATIONS 2L, 2W, MORE THAN 15' (4.5 m) AWAY
 - 701006-05 OFF-ROAD OPERATIONS 2L, 2W, 15' (4.5 m) TO 24" (600 mm) FROM PAVEMENT EDGE
 - 701101-05 OFF-ROAD OPERATIONS, MULTILANE, 15' (4.5 m) TO 24" (600 mm) FROM PAVEMENT EDGE
 - 701106-02 OFF-ROAD OPERATIONS, MULTILANE, MORE THAN 15' (4.5 m) AWAY
 - 701400-09 APPROACH TO LANE CLOSURE, FREEWAY/EXPRESSWAY
 - 701406-11 LANE CLOSURE, FREEWAY/EXPRESSWAY, DAY OPERATIONS ONLY
 - 701428-01 TRAFFIC CONTROL, SETUP AND REMOVAL, FREEWAY/EXPRESSWAY
 - 701456-05 PARTIAL EXIT RAMP CLOSURE FREEWAY/EXPRESSWAY
 - 701601-09 URBAN LANE CLOSURE, MULTILANE, 1W OR 2W WITH NONTRAVERSABLE MEDIAN
 - 701602-09 URBAN LANE CLOSURE, MULTILANE, 2W WITH BIDIRECTIONAL LEFT TURN LANE
 - 701901-07 TRAFFIC CONTROL DEVICES

END IMPROVEMENT
294 FT. NORTH OF
MALL RD.
(NEW CONCRETE SECTION)

C-93-077-18

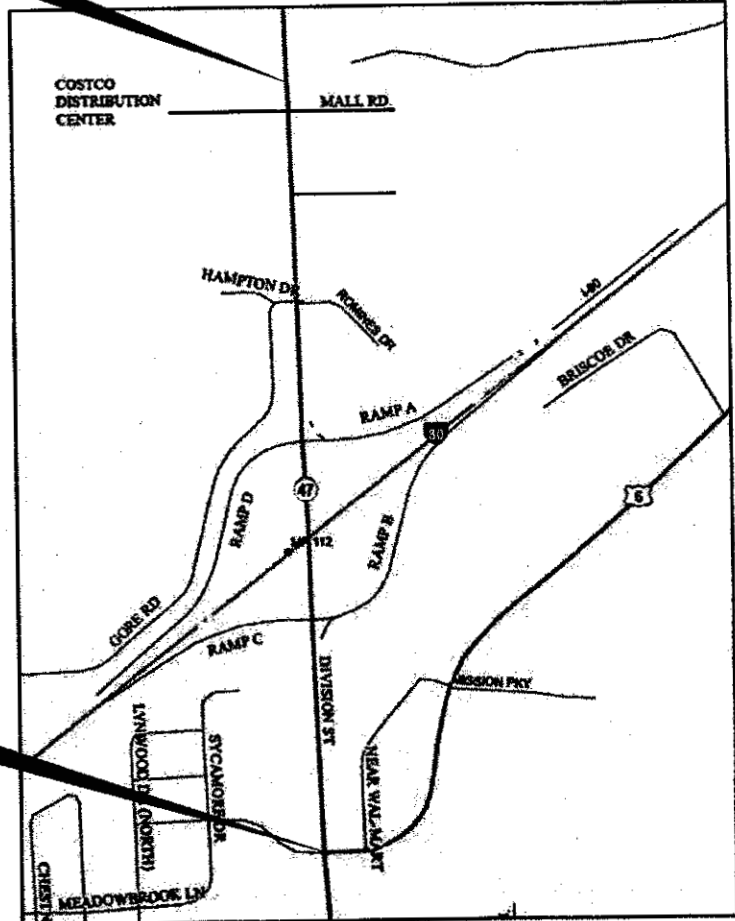
RAMP D IMPROVEMENT
LOG MILE 0.0
(TOP OF RAMP AT IL 47)
LOG MILE 0.48
(1' STUB)

RAMP C IMPROVEMENT
LOG MILE 0.0
(1' STUB)
LOG MILE 0.33
(TOP OF RAMP AT IL 47)

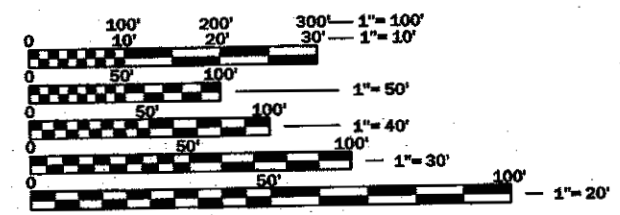
RAMP A IMPROVEMENT
LOG MILE 0.0
(1' STUB)
LOG MILE 0.65
(TOP OF RAMP AT IL 47)

RAMP B IMPROVEMENT
LOG MILE 0.0
(TOP OF RAMP AT IL 47)
LOG MILE 0.56
(1' STUB)

BEGIN IMPROVEMENT
INTERSECTION IL 47 & US 6
LOG MILE 0.0



GROSS LENGTH = 15,418 FT. = 2.92 MILE
NET LENGTH = 298 FT. = 0.06 MILE



FULL SIZE PLANS HAVE BEEN PREPARED USING STANDARD ENGINEERING SCALES. REDUCED SIZED PLANS WILL NOT CONFORM TO STANDARD SCALES. IN MAKING MEASUREMENTS ON REDUCED PLANS, THE ABOVE SCALES MAY BE USED.

J.U.L.I.E.
JOINT UTILITY LOCATION INFORMATION FOR EXCAVATION
1-800-892-0123
OR 811

PROJECT ENGINEER: JOE KANNEL P.E.
UNIT CHIEF: RON WOODSHANK
DISTRICT 3 NO. (815) 434-6131
CONTRACT NO. 66J33

FUNCTIONAL CLASSIFICATION

URBAN - OTHER ARTERIAL IL 47 MAINLINE	URBAN - INTERSTATE F.A.I. ROUTE 80 (I-80)
2017 ADT = 18,000	2015 ADT = 7100
P.V. 59.3%	P.V. 79.2%
S.U. 16.6%	S.U. 4.6%
M.U. 24.1%	M.U. 16.2%

STATE OF ILLINOIS
DEPARTMENT OF TRANSPORTATION

SUBMITTED 05/1 2018
Kim Kachel REGIONAL ENGINEER
June 29 2018
E.A. Elk ENGINEER OF DESIGN AND ENVIRONMENT
June 29 2018
Paul P. Ch... DIRECTOR OF HIGHWAYS PROJECT IMPLEMENTATION

**PRINTED BY THE AUTHORITY
OF THE STATE OF ILLINOIS**

GENERAL NOTES

PLAN DIMENSIONS AND DETAILS RELATIVE TO EXISTING PLANS ARE SUBJECT TO NOMINAL CONSTRUCTION VARIATIONS. THE CONTRACTOR SHALL FIELD VERIFY EXISTING DIMENSIONS AND DETAILS AFFECTING NEW CONSTRUCTION AND MAKE NECESSARY APPROVED ADJUSTMENTS PRIOR TO CONSTRUCTION OR ORDERING OF MATERIALS. SUCH VARIATIONS SHALL NOT BE CAUSE FOR ADDITIONAL COMPENSATION FOR A CHANGE IN SCOPE OF WORK; HOWEVER, THE CONTRACTOR WILL BE PAID FOR THE QUANTITY ACTUALLY FURNISHED AT THE UNIT PRICE BID FOR THE WORK.

FOR STABILIZATION, ALL TYPE III BARRICADES WILL REQUIRE A MINIMUM OF FOUR SAND BAGS PER BARRICADE.

ALL EXCAVATED MATERIAL, WHICH INCLUDES DIGGING OR GRADING OF ANY SOIL OR FILL MATERIAL, WITH THE EXCEPTION OF AGGREGATE FILLS, MUST BE INCORPORATED WITHIN THE IDOT RIGHT OF WAY DUE TO ENVIRONMENTAL DOCUMENTATION REQUIREMENTS.

ANY REFERENCE TO A STANDARD IN THESE PLANS SHALL BE INTERPRETED TO MEAN THE EDITION AS INDICATED BY THE SUBNUMBER SHOWN IN THE LIST OF STANDARDS OR THE COPY INCLUDED IN THESE PLANS.

THE CONTRACTOR SHALL CONTACT JULIE AT LEAST 48 HOURS PRIOR TO EXCAVATION TO DETERMINE WHICH UTILITIES ARE IN THE AREA.

DO NOT PATCH IN AREAS WHERE THERE ARE DETECTOR LOOPS.

COMMITMENTS

STATE OF ILLINOIS
DEPARTMENT OF TRANSPORTATION
DISTRICT THREE
AS BUILT INFORMATION

SUPERVISING CONSTRUCTION FIELD ENGINEER

RESIDENT ENGINEER / TECHNICIAN

START & END DATES
OF CONSTRUCTION:

INSPECTORS:

STATE OF ILLINOIS
DEPARTMENT OF TRANSPORTATION
DISTRICT THREE

PREPARED BY: *Don Beaulieu*
DISTRICT STUDIES & PLANS ENGINEER

DATE: May 10, 2018

EXAMINED BY: *[Signature]*
DISTRICT CONSTRUCTION ENGINEER

[Signature]
DISTRICT MATERIALS ENGINEER

[Signature]
DISTRICT OPERATIONS ENGINEER

FILE NAME =	USER NAME = woodylp	DESIGNED - JW	REVISED -
per:\0648\BENTEG\Illinois.gov\FWIDOT\Documents\DOT\Office\District 3\Projects\0306\337\CADD\Detail\65133-detail.dwg		DRAWN - JW	REVISED -
Default	PLOT SCALE = 100.0000 / in.	CHECKED - JW	REVISED -
	PLOT DATE = 5/4/2018	DATE - 03/14/2018	REVISED -

STATE OF ILLINOIS
DEPARTMENT OF TRANSPORTATION

GENERAL NOTES

SCALE: SHEET 1 OF 1 SHEETS STA. TO STA.

F.A.I. RTE.	SECTION	COUNTY	TOTAL SHEETS	SHEET NO.
80	(S2-S)K & PP	GRUNDY	13	2
CONTRACT NO. 66J33				
ILLINOIS FED. AID PROJECT				

CODE NO.	ITEM	UNIT	TOTAL QUANTITY	CONSTRUCTION CODE	
				CONTRACT MAINTENANCE	
				100% STATE	
				ROADWAY	
		0006		URBAN	
4420050	WELDED WIRE REINFORCEMENT	SQ YD	144	144	
44200645	CLASS A PATCHES, TYPE II, 16 INCH	SQ YD	29	29	
44200646	CLASS A PATCHES, TYPE III, 16 INCH	SQ YD	19	19	
44200970	CLASS B PATCHES, TYPE II, 10 INCH	SQ YD	60	60	
44201019	CLASS B PATCHES, TYPE II, 14 INCH	SQ YD	147	147	
44201023	CLASS B PATCHES, TYPE III, 14 INCH	SQ YD	37	37	
44201025	CLASS B PATCHES, TYPE IV, 14 INCH	SQ YD	107	107	
44201299	DOWEL BARS 1 1/2"	EACH	620	620	
44213000	PATCHING REINFORCEMENT	SQ YD	48	48	
44213200	SAW CUTS	FOOT	2088	2088	
44213204	TIE BARS 3/4"	EACH	200	200	
67100100	MOBILIZATION	L SUM	1	1	
70100420	TRAFFIC CONTROL AND PROTECTION, STANDARD 701411	EACH	4	4	
70100700	TRAFFIC CONTROL AND PROTECTION, STANDARD 701406	L SUM	1	1	

14

FILE NAME =	USER NAME = woodyrjp	DESIGNED - JW	REVISED -
pw:\11.084EBID\INTEG.Illinois.gov\P\MDOT\Documents\DOT Office\District 3\Projects\I366J33\CAD\Date\66J33-details.dwg		DRAWN - JW	REVISED -
PLOT SCALE = 100.0000' / in.		CHECKED - JW	REVISED -
PLOT DATE = 5/12/2018		DATE - 03/16/2018	REVISED -

**STATE OF ILLINOIS
DEPARTMENT OF TRANSPORTATION**

SUMMARY OF QUANTITIES

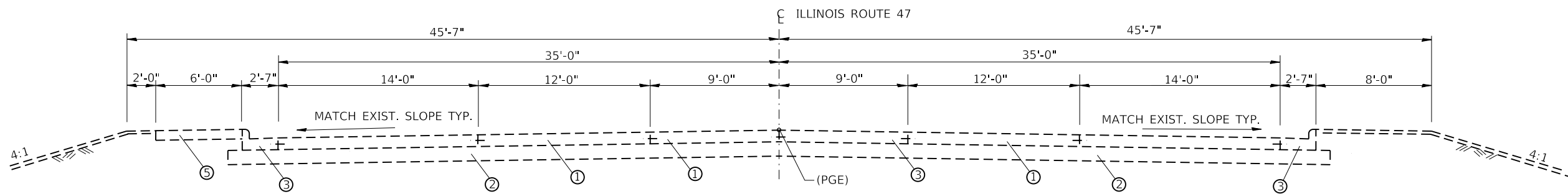
SCALE: SHEET 1 OF 2 SHEETS STA. TO STA.

F.A.I. RTE.	SECTION	COUNTY	TOTAL SHEETS	SHEET NO.
80	(32-3)K & PP	GRUNDY	13	3
			CONTRACT NO. 66J33	
ILLINOIS FED. AID PROJECT				

CODE NO.	ITEM	UNIT	TOTAL QUANTITY	CONSTRUCTION CODE	
				CONTRACT MAINTENANCE	
				100% STATE	
				ROADWAY	
		0006		URBAN	
70100825	TRAFFIC CONTROL AND PROTECTION, STANDARD 701456	L SUM	1	1	
70102630	TRAFFIC CONTROL AND PROTECTION, STANDARD 701601	L SUM	1	1	
70102632	TRAFFIC CONTROL AND PROTECTION, STANDARD 701602	L SUM	1	1	
70103815	TRAFFIC CONTROL SURVEILLANCE	CAL DAY	6	6	
70200100	NIGHTTIME WORK ZONE LIGHTING	L SUM	1	1	
X7015005	CHANGEABLE MESSAGE SIGN	CAL DAY	20	20	
Z0030850	TEMPORARY INFORMATION SIGNING	SQ FT	42	42	

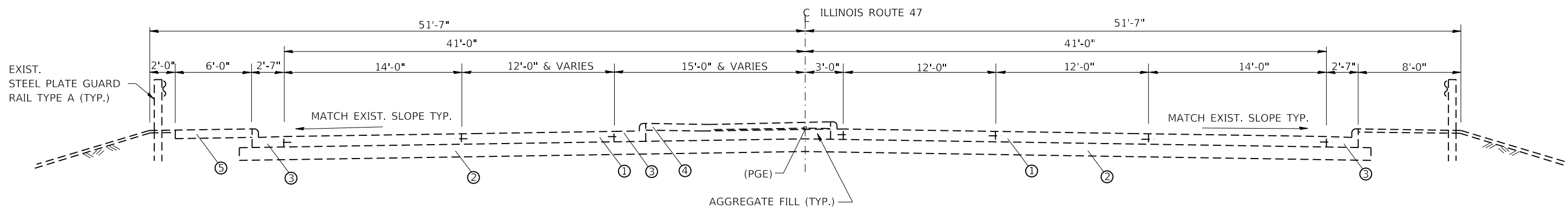
7

FILE NAME =	USER NAME = woodyerp	DESIGNED - JW	REVISED -	STATE OF ILLINOIS DEPARTMENT OF TRANSPORTATION	SUMMARY OF QUANTITIES	F.A.I. RTE.	SECTION	COUNTY	TOTAL SHEETS	SHEET NO.	
pw\1084EBID\INTEG\Illinois.gov\PW\DOT\Documents\10	OT Offices\District 3\Projects\66J33\CADD\66J33-details.dgn	DRAWN - JW	REVISED -			80	(32-3)K & PP	GRUNDY	13	4	
Default	PLOT SCALE = 100.0000' / in.	CHECKED - JW	REVISED -			CONTRACT NO. 66J33					
	PLOT DATE = 5/1/2018	DATE - 03/18/2018	REVISED -			SCALE:	SHEET 2	OF 2	SHEETS	STA.	TO STA.



EXISTING PAVEMENT SECTION

ILLINOIS ROUTE 47
LOG MILE 0.0 TO 0.08

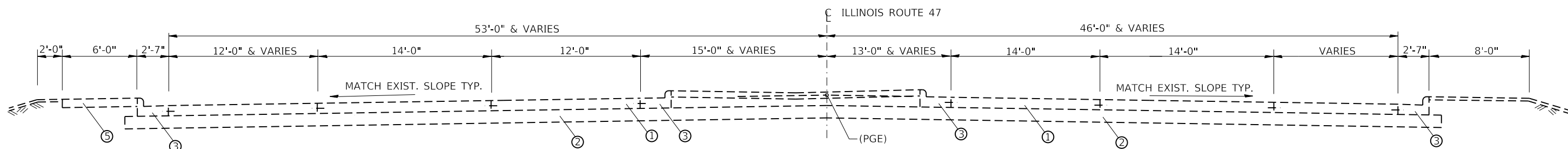


EXISTING PAVEMENT SECTION

ILLINOIS ROUTE 47
LOG MILE 0.40 TO 0.46

LEGEND

- ① EXIST. PCC PAVEMENT, 10" HINGE JOINTED
- ② EXIST. SUBBASE GRANULAR MATERIAL, TYPE A, 12"
- ③ EXIST. CCC AND G, TYPE B6.24
- ④ EXIST. CONCRETE MEDIAN SURFACE, 4"
- ⑤ EXIST. PCC SIDEWALK, 4"



EXISTING PAVEMENT SECTION

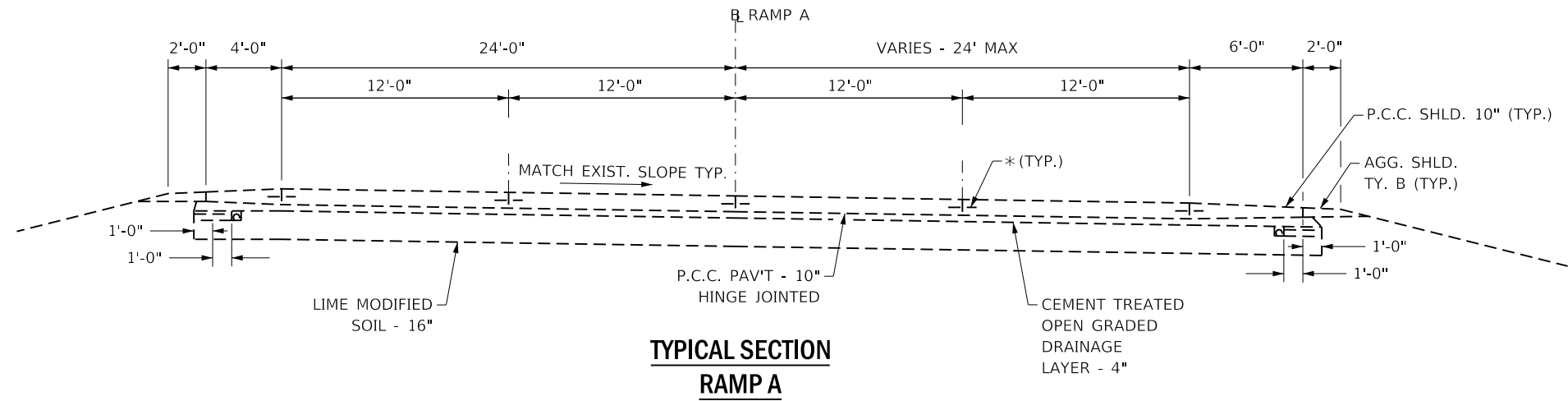
ILLINOIS ROUTE 47
LOG MILE 0.49 TO 0.90

FILE NAME =	USER NAME = woodyetjp	DESIGNED - JW	REVISED -
pw:\IL084EBIDINTEG\ilnotes.gov\PIWIDOT\Documents\DOT Offices\District 3\Projects\0366J33\CADDData\66J33-details.dgn		DRAWN - JW	REVISED -
Default	PLOT SCALE = 100.0000' / in.	CHECKED - JW	REVISED -
	PLOT DATE = 4/25/2018	DATE - 03/15/2018	REVISED -

**STATE OF ILLINOIS
DEPARTMENT OF TRANSPORTATION**

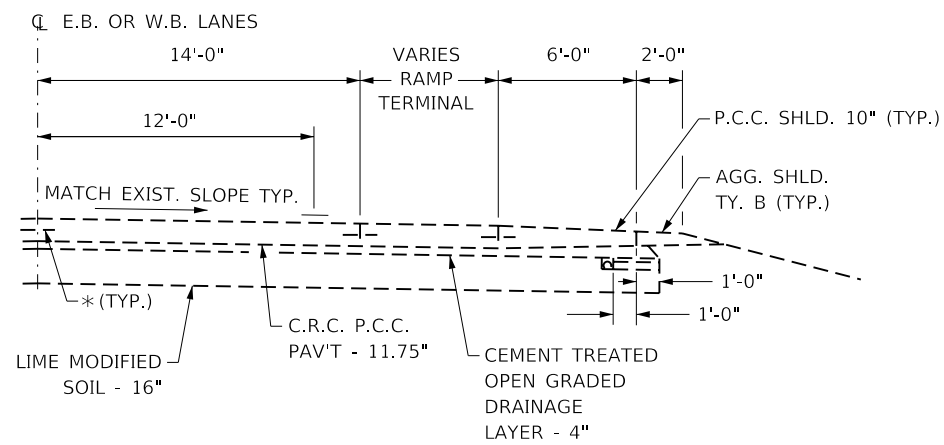
TYPICALS			
SCALE:	SHEET 1	OF 2 SHEETS	STA. TO STA.

F.A.I. RTE.	SECTION	COUNTY	TOTAL SHEETS	SHEET NO.
80	(32-3)K & PP	GRUNDY	13	5
CONTRACT NO. 66J33				
ILLINOIS FED. AID PROJECT				

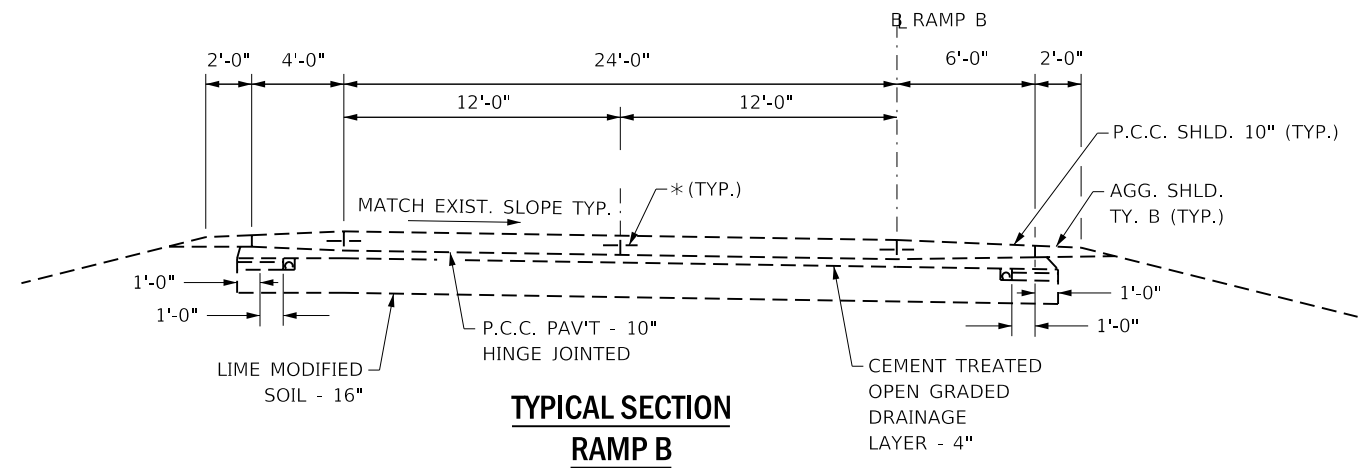


**TYPICAL SECTION
RAMP A**

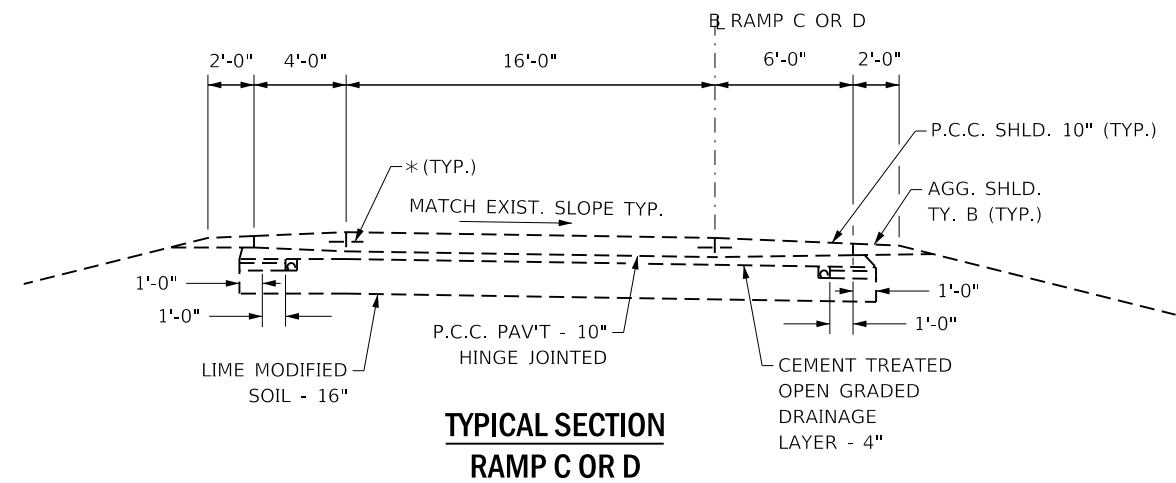
* NO. 6x24" TIE BARS
AT 36" CTS. (TYP.)



**TYPICAL SECTION
F.A.I. 80 WITH RAMP TERMINAL**



**TYPICAL SECTION
RAMP B**



**TYPICAL SECTION
RAMP C OR D**

FILE NAME =	USER NAME = woodyetjp	DESIGNED - JW	REVISED -
pw:\IL084EBID\INTEG\ilnotes.gov\PWIDOT\Documents\DOT Offices\District 3\Projects\0366\J33\CADData\66J33-detai\...		DRAWN - JW	REVISED -
Default	PLOT SCALE = 100.0000' / in.	CHECKED - JW	REVISED -
	PLOT DATE = 5/1/2018	DATE - 04/05/2018	REVISED -

**STATE OF ILLINOIS
DEPARTMENT OF TRANSPORTATION**

TYPICALS			
SCALE:	SHEET 2	OF 2 SHEETS	STA. TO STA.

F.A.I. RTE.	SECTION	COUNTY	TOTAL SHEETS	SHEET NO.
80	(32-3)K & PP	GRUNDY	13	6
CONTRACT NO. 66J33				
ILLINOIS FED. AID PROJECT				

**SCHEDULE - PATCHING
IL 47 MAINLINE (NORTHBOUND LANES)**

LOCATION	PASSING LANE				DRIVING LANE					
	PATCH LENGTH	CLASS B PATCHING		DOWEL BARS	SAW CUTS	PATCH LENGTH	CLASS B PATCHING		DOWEL BARS	SAW CUTS
		TYPE II					TYPE II			
		10"		1 1/2"			10"		1 1/2"	
LOG MILE	(FT)	SQ YD		EACH	FOOT	(FT)	SQ YD		EACH	FOOT
0.40						6	9		24	60
TOTALS							9		24	60

**SCHEDULE - PATCHING
IL 47 MAINLINE (SOUTHBOUND LANES)**

LOCATION	PASSING LANE				DRIVING LANE					
	PATCH LENGTH	CLASS B PATCHING		DOWEL BARS	SAW CUTS	PATCH LENGTH	CLASS B PATCHING		DOWEL BARS	SAW CUTS
		TYPE II					TYPE II			
		10"		1 1/2"			10"		1 1/2"	
LOG MILE	(FT)	SQ YD		EACH	FOOT	(FT)	SQ YD		EACH	FOOT
0.70	6	8		20	54	6	9		24	60
0.50	6	8		20	54	6	9		24	60
0.00	6	8		20	54	6	9		24	60
TOTALS		24		60	162		27		72	180

THE DETECTOR LOOP FOR SB MID LOOP AT IL 47 AND GORE RD. IS NON-OPERATIONAL AND THE TRAFFIC SIGNAL SECTION HAS NO PLANS TO FIX IT.

**SCHEDULE - PATCHING
RAMP C (EASTBOUND OFF RAMP)**

LOCATION	OFF RAMP							
	PATCH LENGTH	CLASS B PATCHING			DOWEL BARS	SAW CUTS	WELDED WIRE REINF.	TIE BARS
		TYPE II	TYPE III	TYPE IV				
		14"	14"	14"	1 1/2"			
LOG MILE	(FT)	SQ YD	SQ YD	SQ YD	EACH	FOOT	SQ YD	EACH
0.25	6	11			28	66		
TOTALS		11			28	66		

RAMP C LOG MILE 0.0 = BEGINNING OF RAMP PAVEMENT (1' STUB)

**SCHEDULE - PATCHING
RAMP B (EASTBOUND ON RAMP)**

LOCATION	LEFT LANE ON RAMP								RIGHT LANE ON RAMP							
	PATCH LENGTH	CLASS B PATCHING			DOWEL BARS	SAW CUTS	WELDED WIRE REINF.	TIE BARS	PATCH LENGTH	CLASS B PATCHING			DOWEL BARS	SAW CUTS	WELDED WIRE REINF.	TIE BARS
		TYPE II	TYPE III	TYPE IV						TYPE II	TYPE III	TYPE IV				
		14"	14"	14"	1 1/2"				14"	14"	14"	1 1/2"				
LOG MILE	(FT)	SQ YD	SQ YD	SQ YD	EACH	FOOT	SQ YD	EACH	(FT)	SQ YD	SQ YD	SQ YD	EACH	FOOT	SQ YD	EACH
0.00									12		16		20	72	16	
0.00									6	8			20	54		
0.00									6	8			20	54		
0.04	8	11			20	60			8	11			20	60		
0.20	8	11			20	60			8	11			20	60		
0.25	20			27	20	96	27	10								
TOTALS		22		27	60	216	27	10		38	16		100	300	16	

RAMP B LOG MILE 0.0 = TOP OF RAMP AT IL . 47

**SCHEDULE - PATCHING
RAMP A (WESTBOUND OFF RAMP)**

LOCATION	LEFT LANE OFF RAMP						RIGHT LANE OFF RAMP					
	PATCH LENGTH	CLASS A PATCHING		PATCH REINF.	SAW CUTS	TIE BARS 3/4"	PATCH LENGTH	CLASS A PATCHING		PATCH REINF.	SAW CUTS	TIE BARS 3/4"
		TYPE II 16"	TYPE III 16"					TYPE II 16"	TYPE III 16"			
LOG MILE	FEET	SQ YD	SQ YD	SQ YD	FOOT	EACH	FEET	SQ YD	SQ YD	SQ YD	FOOT	EACH
0.00							12		19	19	78	42
0.50	6	9		9	60	42	6	9		9	60	42
TOTALS		9		9	60	42		9	19	28	138	84

RAMP A LOG MILE 0.0 = BEGINNING OF RAMP PAVEMENT (1' STUB)

**SCHEDULE - PATCHING
RAMP A (WESTBOUND OFF RAMP LEFT TURN LANES)**

LOCATION	LEFT LANE OFF RAMP							RIGHT LANE OFF RAMP								
	PATCH LENGTH	CLASS B PATCHING			DOWEL BARS 1 1/2"	SAW CUTS	WELDED WIRE REINF.	TIE BARS 3/4"	PATCH LENGTH	CLASS B PATCHING			DOWEL BARS 1 1/2"	SAW CUTS	WELDED WIRE REINF.	TIE BARS 3/4"
		TYPE II 14"	TYPE III 14"	TYPE IV 14"						TYPE II 14"	TYPE III 14"	TYPE IV 14"				
LOG MILE	(FT)	SQ YD	SQ YD	SQ YD	EACH	FOOT	SQ YD	EACH	(FT)	SQ YD	SQ YD	SQ YD	EACH	FOOT	SQ YD	EACH
0.60	6	8			20	54			6	8			20	54		
TOTALS		8			20	54				8			20	54		

**SCHEDULE - PATCHING
RAMP A (WESTBOUND OFF RAMP RIGHT TURN LANES)**

LOCATION	LEFT LANE OFF RAMP							RIGHT LANE OFF RAMP								
	PATCH LENGTH	CLASS B PATCHING			DOWEL BARS 1 1/2"	SAW CUTS	WELDED WIRE REINF.	TIE BARS 3/4"	PATCH LENGTH	CLASS B PATCHING			DOWEL BARS 1 1/2"	SAW CUTS	WELDED WIRE REINF.	TIE BARS 3/4"
		TYPE II 14"	TYPE III 14"	TYPE IV 14"						TYPE II 14"	TYPE III 14"	TYPE IV 14"				
LOG MILE	(FT)	SQ YD	SQ YD	SQ YD	EACH	FOOT	SQ YD	EACH	(FT)	SQ YD	SQ YD	SQ YD	EACH	FOOT	SQ YD	EACH
0.60	6	8			20	54			6	8			20	54		
TOTALS		8			20	54				8			20	54		

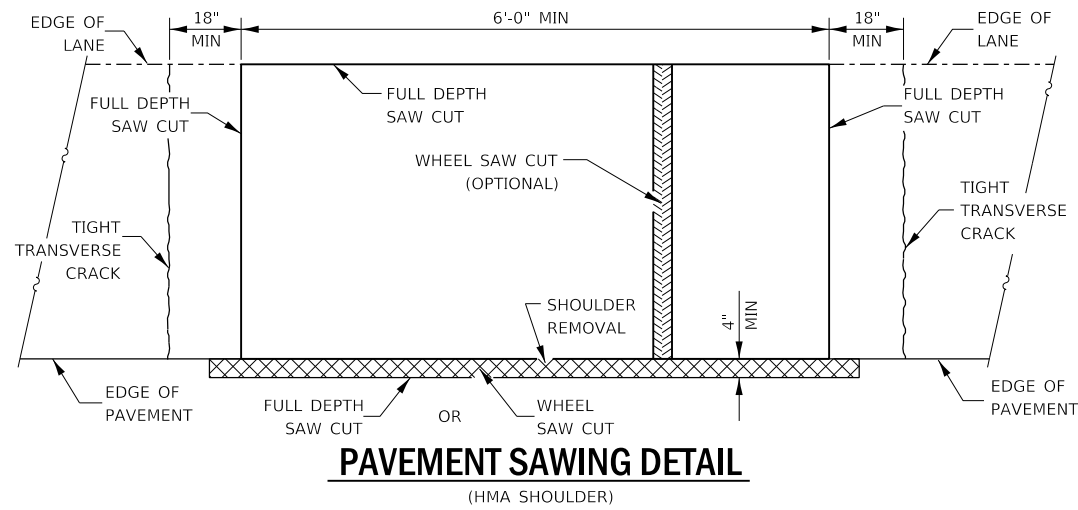
**SCHEDULE - PATCHING
RAMP D (WESTBOUND ON RAMP)**

LOCATION	ON RAMP							
	PATCH LENGTH	CLASS B PATCHING			DOWEL BARS 1 1/2"	SAW CUTS	WELDED WIRE REINF.	TIE BARS 3/4"
		TYPE II 14"	TYPE III 14"	TYPE IV 14"				
LOG MILE	(FT)	SQ YD	SQ YD	SQ YD	EACH	FOOT	SQ YD	EACH
0.00	45				80	28	183	22
0.04	15				28	93		
0.06	6	11			28	66		
0.10	12			21	28	84	21	
0.10	6	11			28	66		
0.15	6	11			28	66		
0.20	6	11			28	66		
TOTALS		44	21	80	196	624	101	22

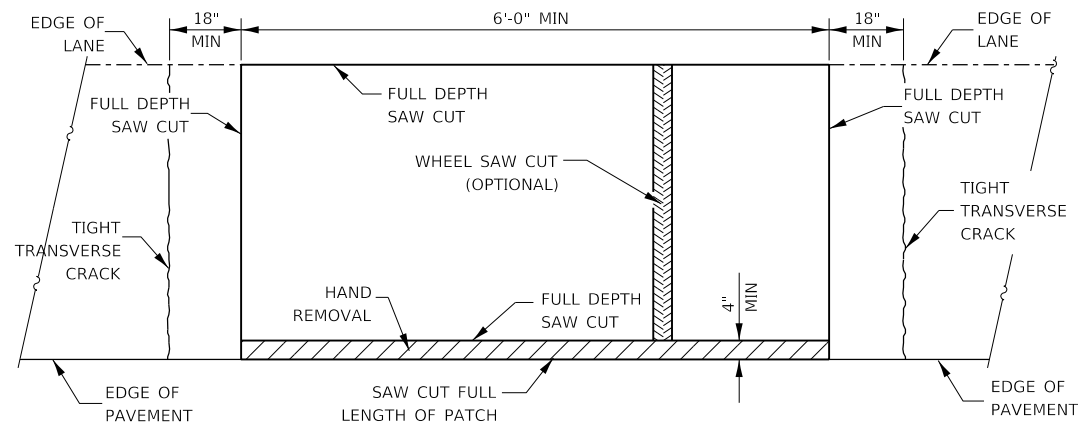
RAMP D LOG MILE 0.0 = TOP OF RAMP AT I.L. 47

**SCHEDULE - PATCHING
RAMP D (WESTBOUND ON RAMP)**

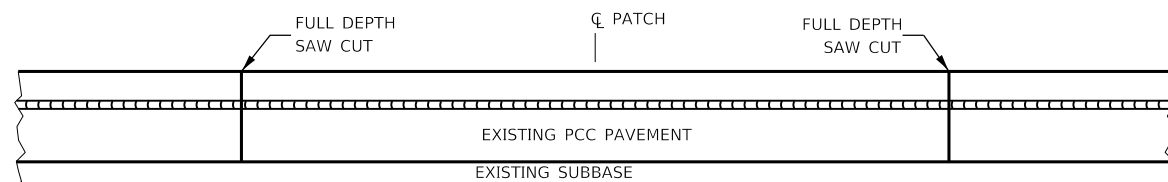
LOCATION	ON RAMP					
	PATCH LENGTH	CLASS A PATCHING		PATCH REINF.	SAW CUTS	TIE BARS 3/4"
		TYPE II 16"	TYPE III 16"			
LOG MILE	FEET	SQ YD	SQ YD	SQ YD	FOOT	EACH
0.27	6	11		11	66	42
TOTALS		11		11	66	42



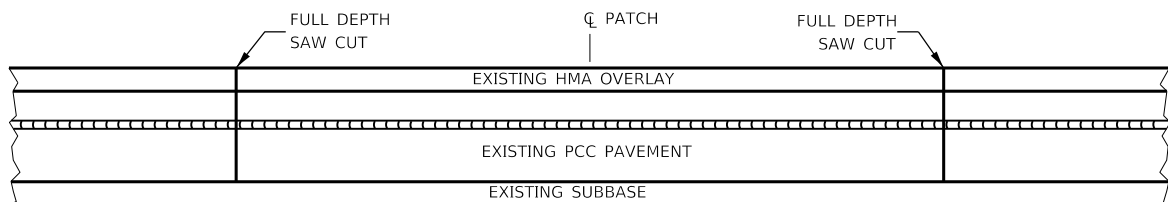
PAVEMENT SAWING DETAIL
(HMA SHOULDER)



PAVEMENT SAWING DETAIL
(PCC SHOULDER)

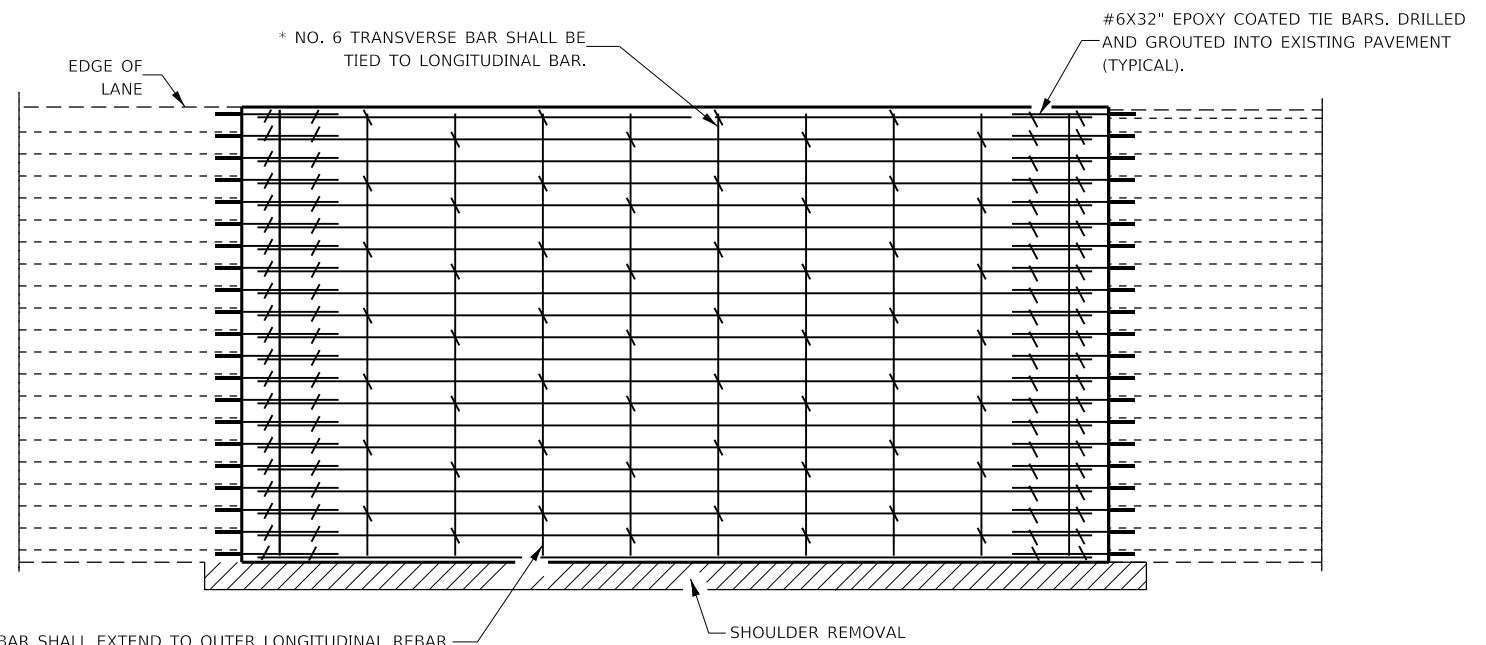


EXISTING PAVEMENT WITHOUT HMA SURFACE



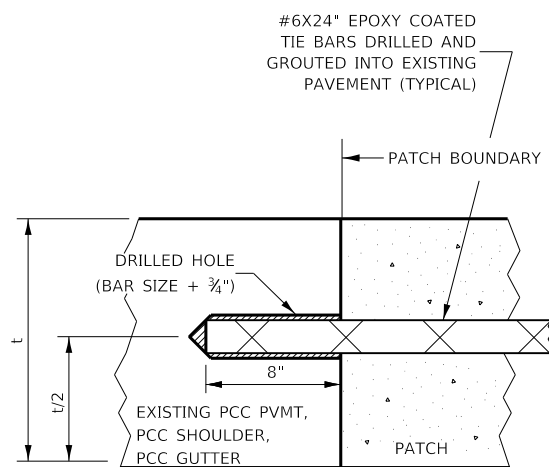
EXISTING PAVEMENT WITH HMA SURFACE

PAVEMENT SAWING DETAIL FOR CLASS A PATCHING
(CRC PAVEMENT)



TRANSVERSE REBAR SHALL EXTEND TO OUTER LONGITUDINAL REBAR WHILE PROVIDING A MINIMUM 3" CLEARANCE FROM EXISTING PAVEMENT EDGE

PAVEMENT REINFORCEMENT DETAIL



LONGITUDINAL CONSTRUCTION JOINT

PATCHES MORE THAN 20' IN LENGTH SHALL BE TIED TO ADJACENT PAVEMENT, PCC SHOULDERS OR PCC CURB AND GUTTER WITH #6x24" EPOXY COATED TIE BARS AT 36" CENTERS.

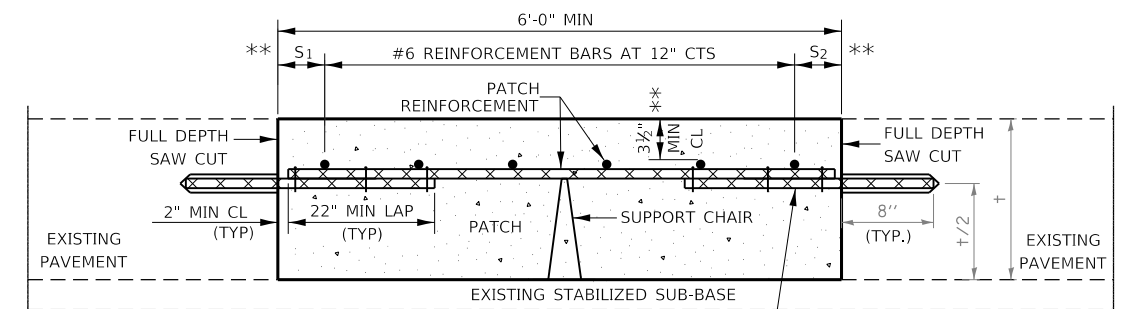
NOTES:

EXISTING LONGITUDINAL REINFORCEMENT SPACING: 5 1/2"

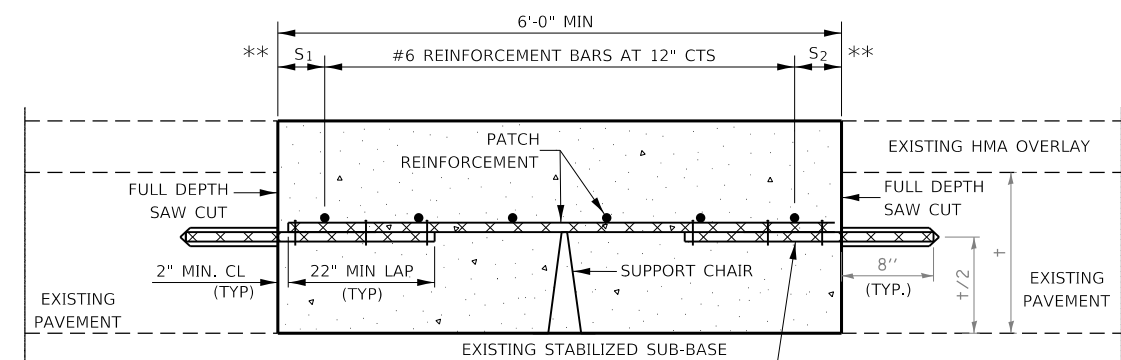
SPACING OF NEW LONGITUDINAL REINFORCEMENT AND NEW LONGITUDINAL TIE BARS SHALL MATCH SPACING OF EXISTING REINFORCEMENT AND SHALL BE TIED TOGETHER WITH A MINIMUM OF TWO TIES PER BAR.

* EVERY THIRD INTERSECTION MUST BE TIED. WHEN THE MINIMUM CLEARANCE CANNOT BE OBTAINED WITH THE TRANSVERSE REBAR ON TOP, THEN THE TRANSVERSE REBAR SHALL BE TIED TO THE BOTTOM OF THE LONGITUDINAL REBAR.

** VARIABLES WHERE S₁ AND S₂ ARE 2 1/2" MIN. AND 12" MAX.



WITHOUT HMA OVERLAY



WITH HMA OVERLAY

PATCHING DETAIL FOR CLASS A PATCHING
(CRC PAVEMENT)

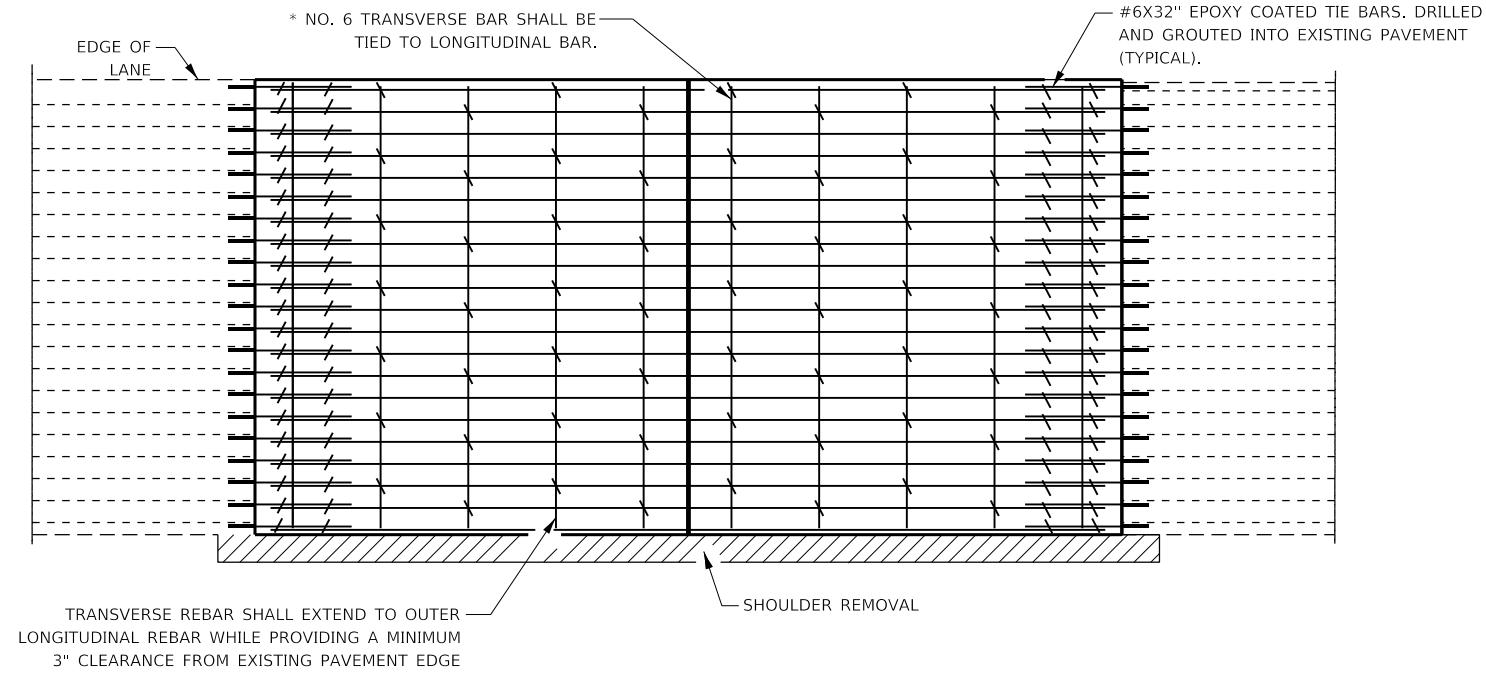
FILE NAME =	USER NAME = woodyetjp	DESIGNED - JW	REVISED -
pw:\IL084EBIDINTEG\ifnotes.gov\PWIDOT\Documents\DOT Offices\District 3\Projects\D366J33\CADData\66J33-details.dgn		DRAWN - JW	REVISED -
	PLOT SCALE = 100.0000' / in.	CHECKED - JW	REVISED -
Default	PLOT DATE = 4/13/2018	DATE - 03/13/2018	REVISED -

STATE OF ILLINOIS
DEPARTMENT OF TRANSPORTATION

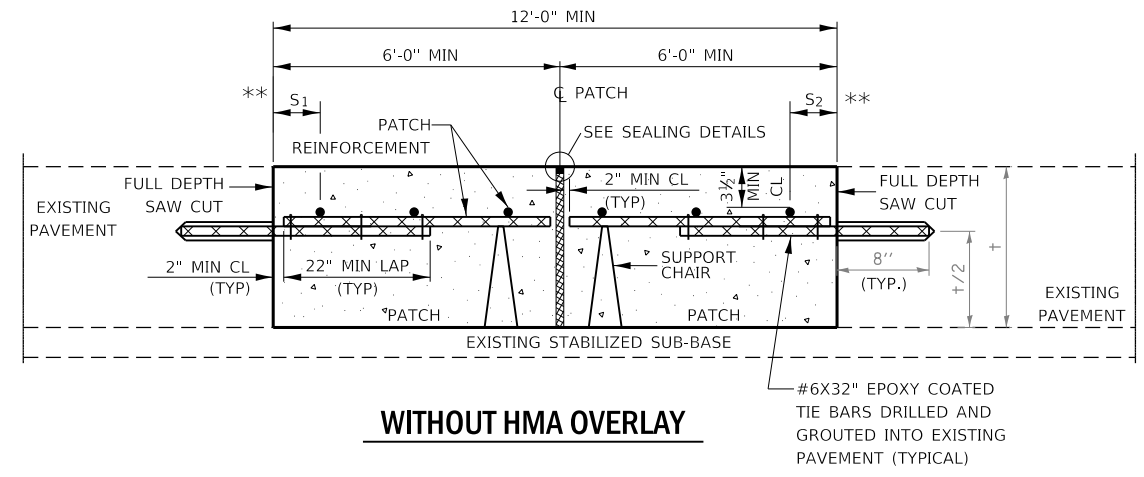
CLASS A PATCHING DETAILS

SCALE: SHEET 1 OF 2 SHEETS STA. TO STA.

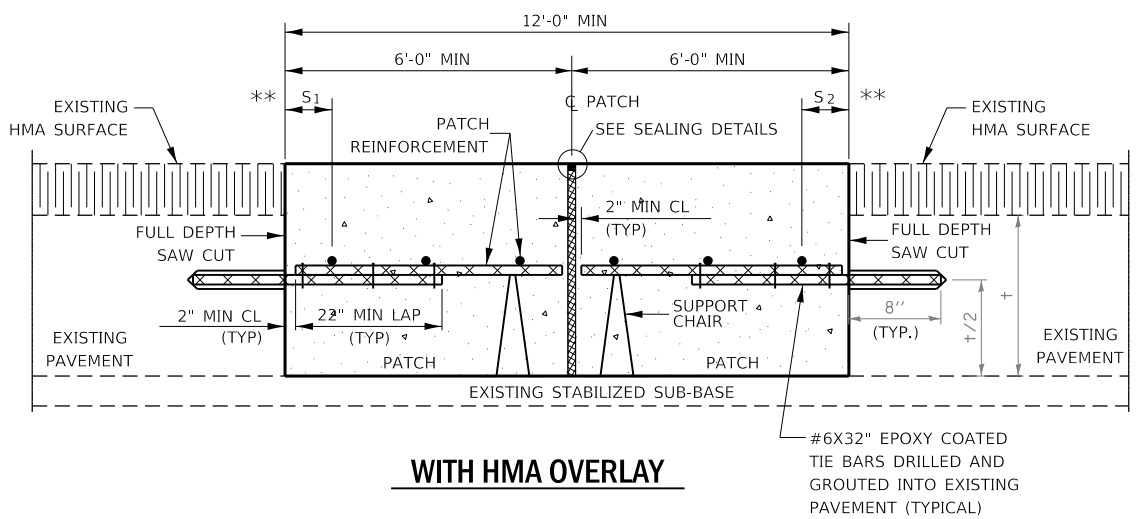
F.A.I. RTE.	SECTION	COUNTY	TOTAL SHEETS	SHEET NO.
80	(32-3)K & PP	GRUNDY	13	9
CONTRACT NO. 66J33				
ILLINOIS FED. AID PROJECT				



PAVEMENT REINFORCEMENT DETAIL

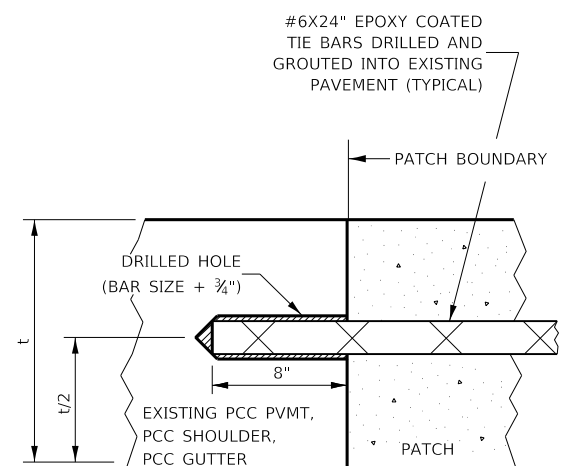


WITHOUT HMA OVERLAY



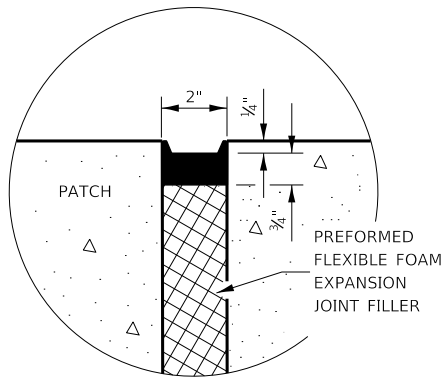
WITH HMA OVERLAY

CLASS A PATCH WITH EXPANSION JOINT

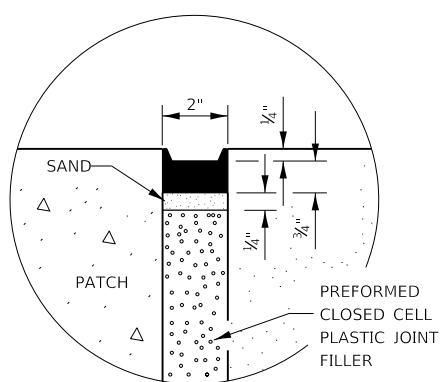


LONGITUDINAL CONSTRUCTION JOINT

PATCHES MORE THAN 20' IN LENGTH SHALL BE TIED TO ADJACENT PAVEMENT, PCC SHOULDERS OR PCC CURB AND GUTTER WITH #6x24" EPOXY COATED TIE BARS AT 36" CENTERS.



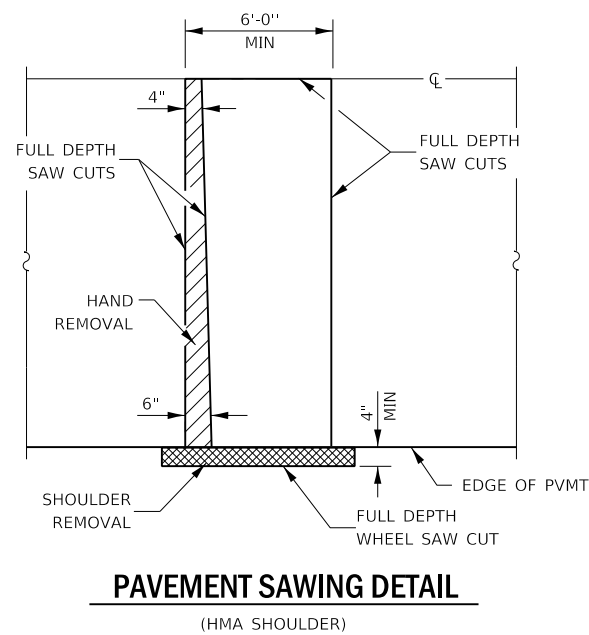
SEALING DETAIL



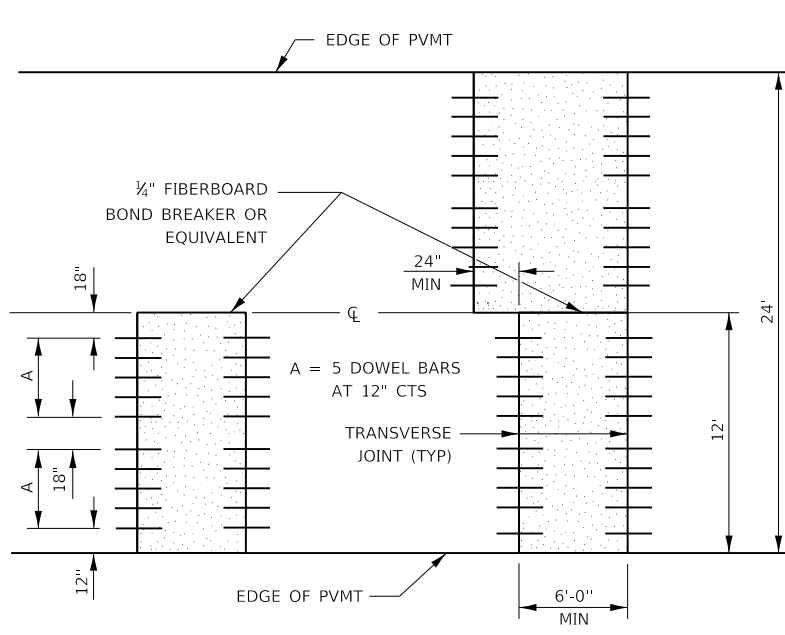
SEALING DETAIL

- NOTES:**
- EXISTING LONGITUDINAL REINFORCEMENT SPACING; $\pm 5\frac{1}{8}$ ".
 - SPACING OF NEW LONGITUDINAL REINFORCEMENT AND NEW LONGITUDINAL TIE BARS SHALL MATCH SPACING OF EXISTING REINFORCEMENT AND SHALL BE TIED TOGETHER WITH A MINIMUM OF TWO TIES PER BAR.
 - SUPPORT CHAIRS SHALL BE REQUIRED WHENEVER PATCH LENGTH EXCEEDS 6'-0"
 - * EVERY THIRD INTERSECTION MUST BE TIED. WHEN THE MINIMUM CLEARANCE CANNOT BE OBTAINED WITH THE TRANSVERSE REBAR ON TOP, THEN THE TRANSVERSE REBAR SHALL BE TIED TO THE BOTTOM OF THE LONGITUDINAL REBAR.
 - ** VARIABLES WHERE S_1 AND S_2 ARE $2\frac{1}{2}$ " MIN. AND 12" MAX.

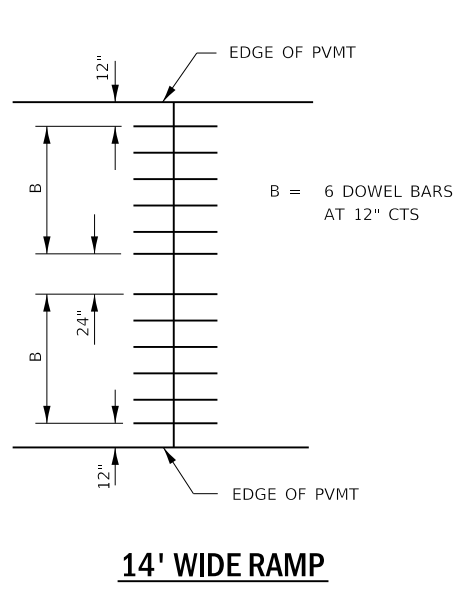
FILE NAME =	USER NAME = woodyetjp	DESIGNED - JW	REVISED -	STATE OF ILLINOIS DEPARTMENT OF TRANSPORTATION	CLASS A PATCHING DETAILS			F.A.I. RTE.	SECTION	COUNTY	TOTAL SHEETS	SHEET NO.
pw:\IL084EBIDINTEG\ilnotes.gov\PWIDOT\Documents\DOT Offices\District 3\Projects\D366J33\CADDData\66J33-details.dgn	DRAWN - JW	REVISED -	80					(32-3)K & PP	GRUNDY	13	10	
Default	PLOT SCALE = 100.0000' / in.	CHECKED - JW	REVISED -		CONTRACT NO. 66J33			ILLINOIS FED. AID PROJECT				
	PLOT DATE = 4/13/2018	DATE - 03/13/2018	REVISED -		SCALE:	SHEET 2	OF 2	SHEETS	STA.	TO STA.		



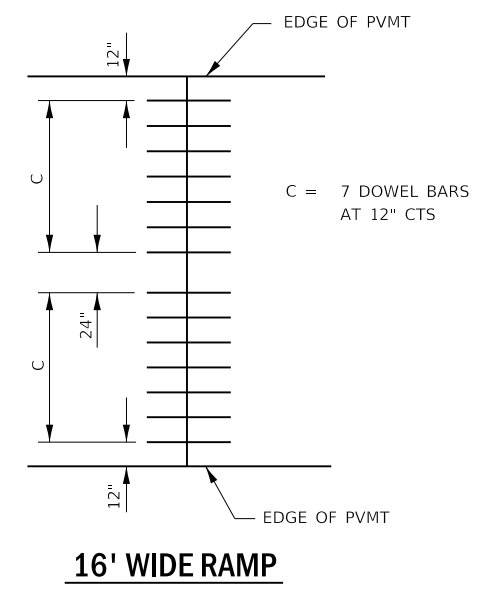
PAVEMENT SAWING DETAIL
(HMA SHOULDER)



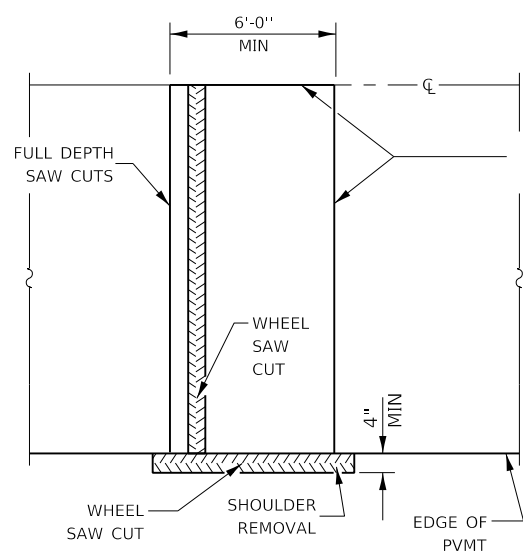
12' WIDE LANES



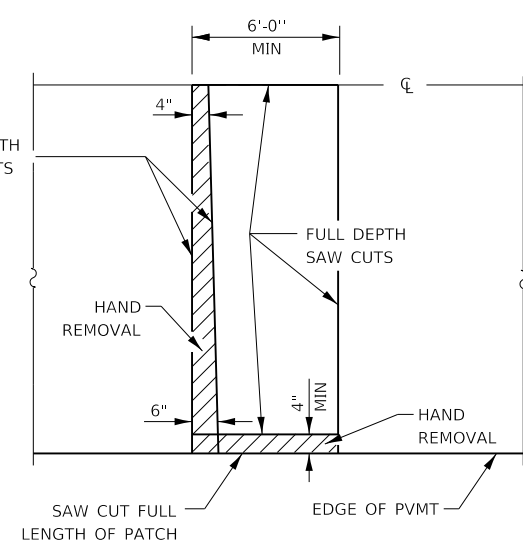
14' WIDE RAMP



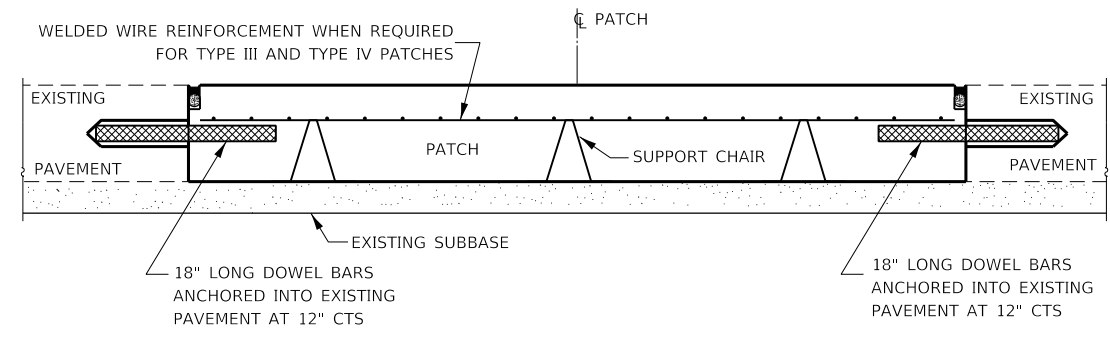
16' WIDE RAMP



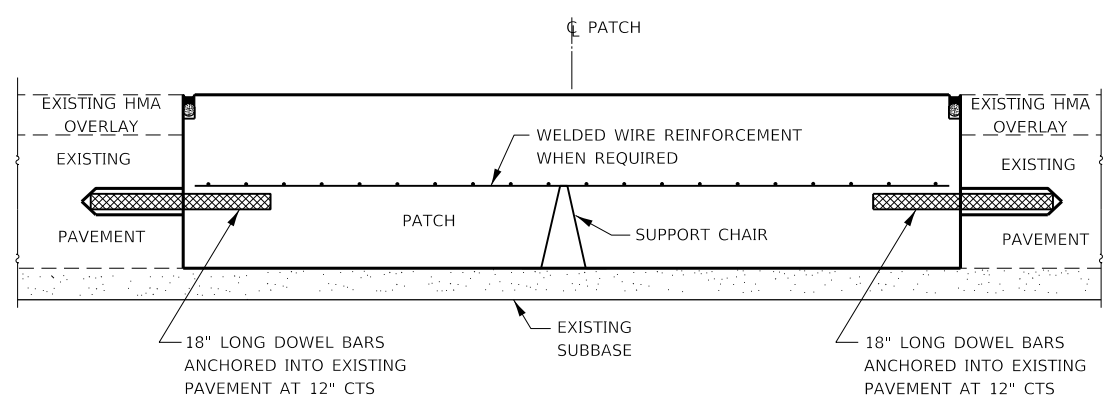
ALTERNATE SAWING DETAIL
(HMA SHOULDER)



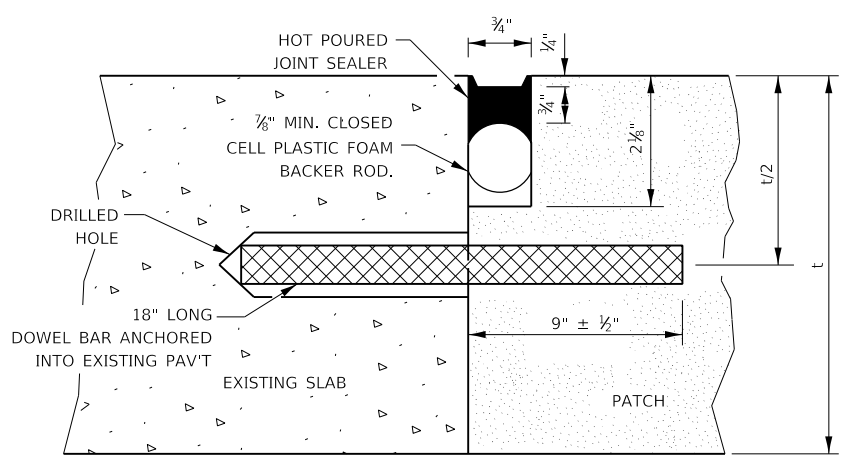
PAVEMENT SAWING DETAIL
(PCC SHOULDER)



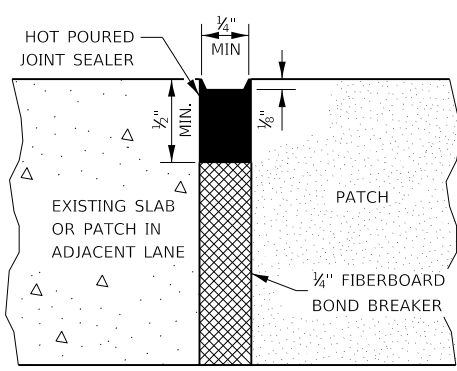
PATCHING WITHOUT HMA OVERLAY



PATCHING WITH HMA OVERLAY



TRANSVERSE JOINT

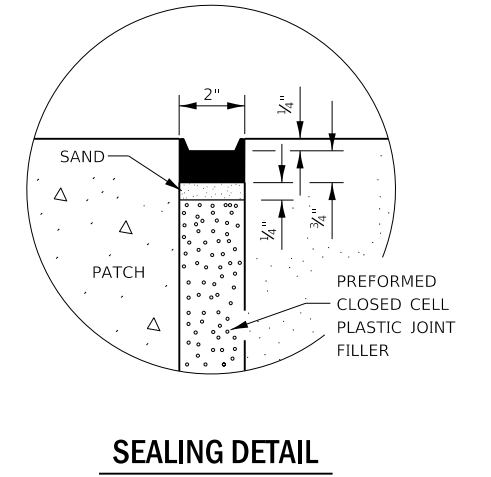
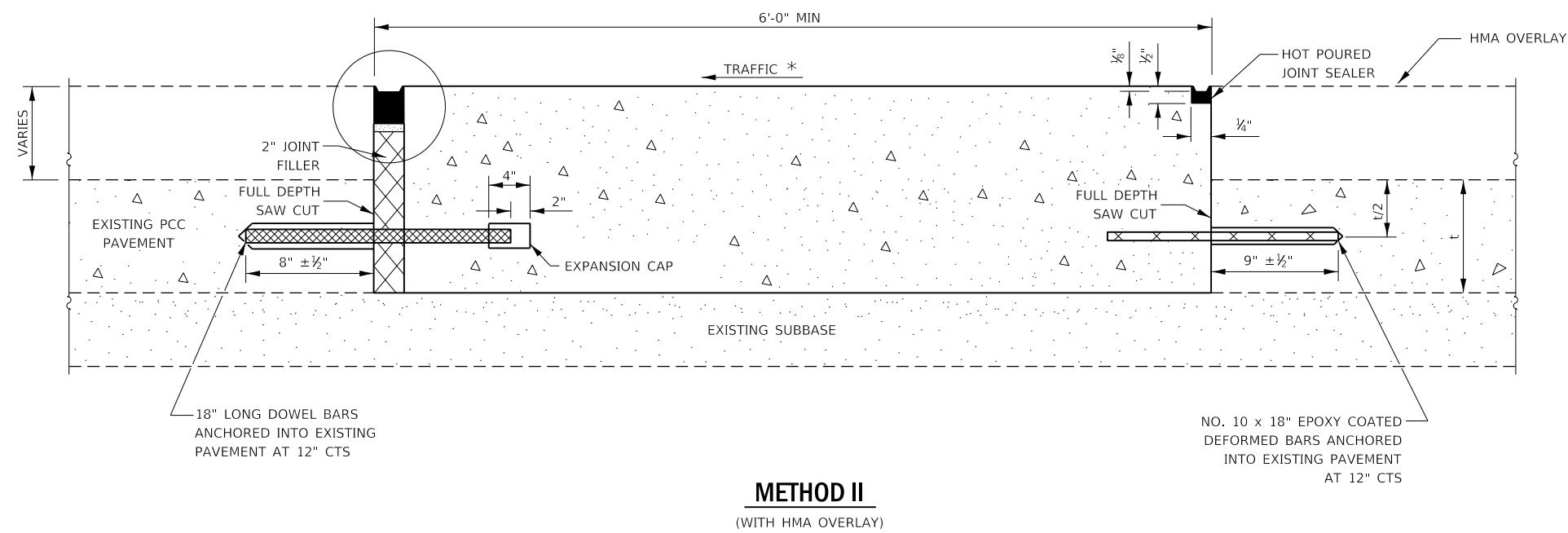
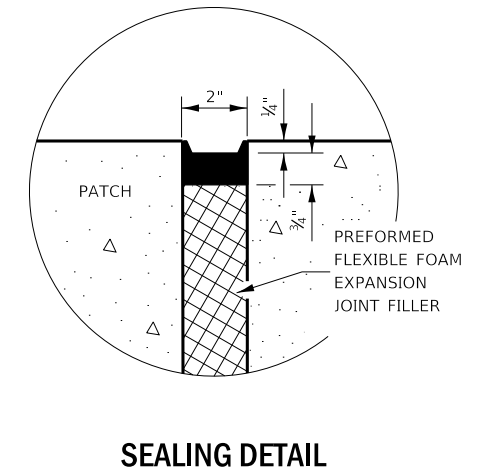
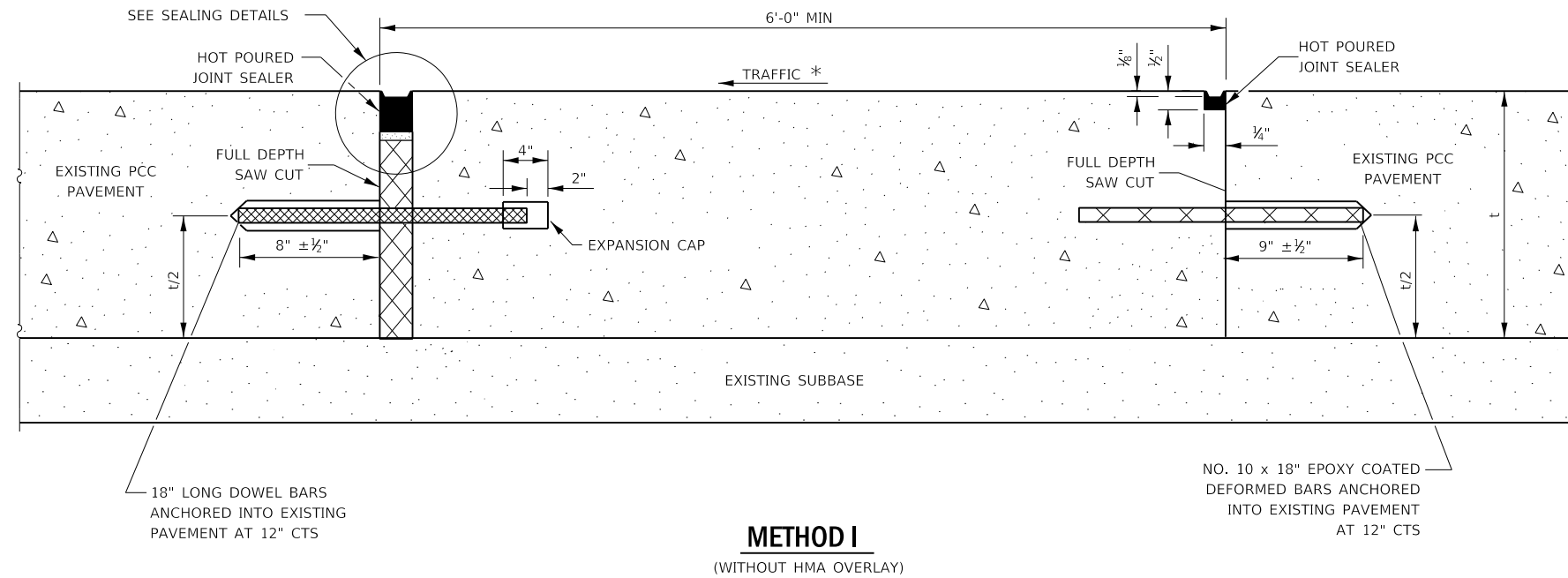


CENTERLINE JOINT

DOWEL BAR TABLE		
PAVEMENT THICKNESS	DOWEL BAR DIAMETER	HOLE DIAMETER
8" OR GREATER	1 1/2"	1 3/8"
7" THRU 7.99"	1 1/4"	1 3/8"
LESS THAN 7"	1"	1 1/8"

GENERAL NOTES

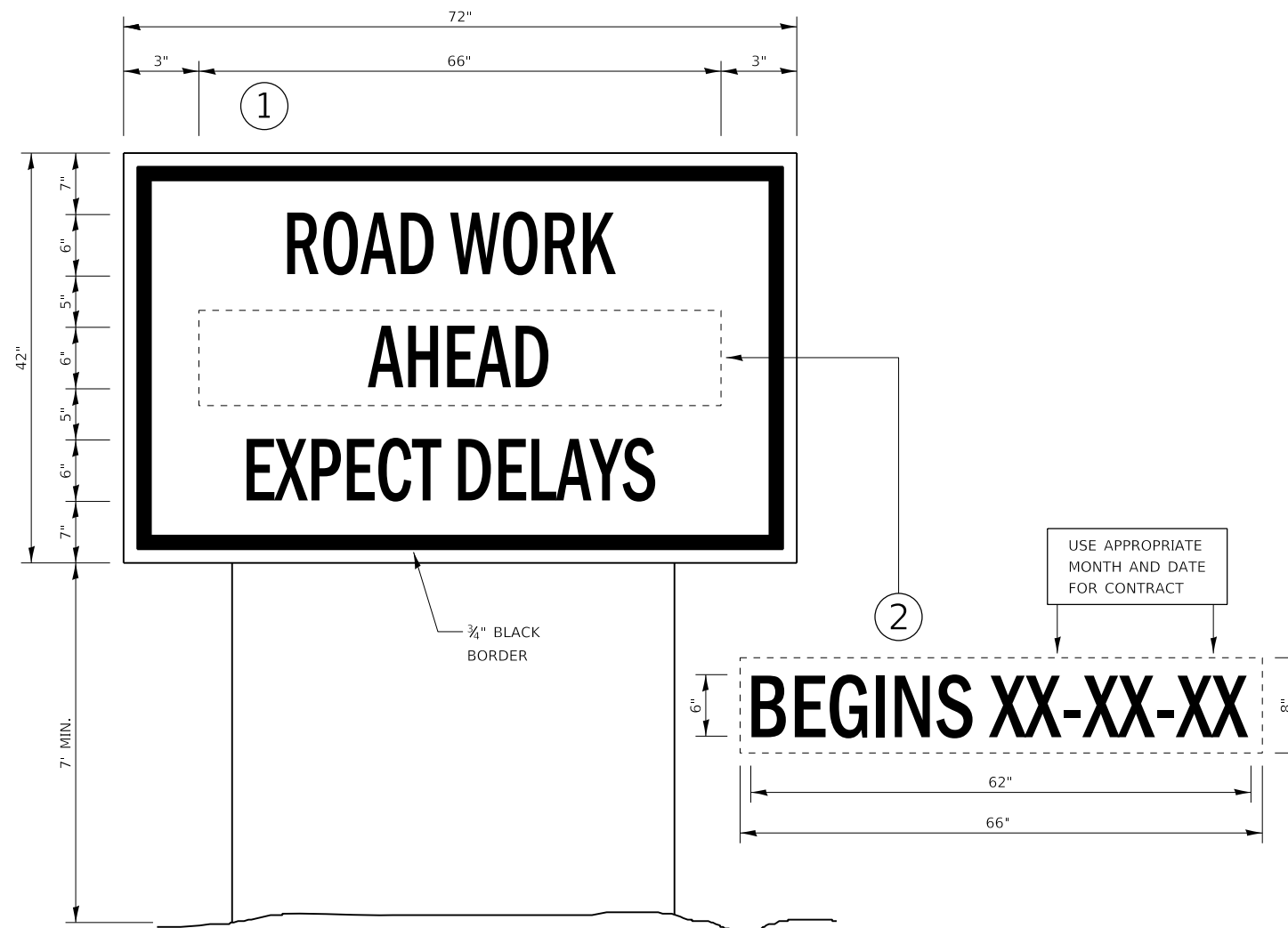
THE TRANSVERSE JOINTS FOR CLASS B PATCHES SHALL ALIGN WITH JOINTS OR CRACKS IN THE ADJACENT LANE WHENEVER POSSIBLE.
SEE STANDARD 420701 FOR DETAILS OF PAVEMENT WELDED WIRE REINFORCEMENT.



NOTE

* WHEN RE-ESTABLISHING A TRANSVERSE EXPANSION JOINT ON A TWO-WAY ROAD, REVERSE THE ORIENTATION OF THE DOWEL BARS WITH RESPECT TO TRAFFIC FOR ONE OF THE PATCHES SUCH THAT THE JOINT WILL BE CONTINUOUS ACROSS BOTH LANES.

FILE NAME =	USER NAME = woodyetjp	DESIGNED - JW	REVISED -	STATE OF ILLINOIS DEPARTMENT OF TRANSPORTATION	CLASS B PATCHING DETAILS			F.A.I. RTE.	SECTION	COUNTY	TOTAL SHEETS	SHEET NO.
pw:\IL084EBIDINTEG\ifnotes.gov\PWIDOT\Documents\DOT Offices\District 3\Projects\D366J33\CADData\66J33-details.dgn	DRAWN - JW	REVISED -	80					(32-3)K & PP	GRUNDY	13	12	
Default	PLOT SCALE = 100.0000 / in.	CHECKED - JW	REVISED -		CONTRACT NO. 66J33							
	PLOT DATE = 4/13/2018	DATE - 03/13/2018	REVISED -		SCALE: _____	SHEET 2	OF 2	SHEETS	STA. _____	TO STA. _____	ILLINOIS FED. AID PROJECT	



TEMPORARY INFORMATION SIGNING

NOTES:

1. USE 6" D BLACK LETTERING ON FLUORESCENT ORANGE BACKGROUND.
2. ERECT SIGNS AT LOCATIONS IN ADVANCE OF THE "ROAD CONSTRUCTION AHEAD" SIGNS AS DIRECTED BY THE ENGINEER.
3. ERECT SIGN ① WITH INSTALLED PANEL ② A MINIMUM OF ONE WEEK PRIOR TO THE START OF THE LANE CLOSURE.
4. REMOVE PANEL ② ON THAT DATE.
5. SEE SPECIAL PROVISION "TEMPORARY INFORMATION SIGNING" FOR ADDITIONAL INFORMATION.
6. WILL BE PAID FOR PER SQ FT AS "TEMPORARY INFORMATION SIGNING". EACH SIGN = 21 SQ FT AND THE DATE PANEL ② WILL NOT BE MEASURED SEPARATELY FOR PAYMENT.

FILE NAME =	USER NAME = woodyetjp	DESIGNED - JW	REVISED -	STATE OF ILLINOIS DEPARTMENT OF TRANSPORTATION	TEMPORARY INFORMATION SIGNING	F.A.I. RTE.	SECTION	COUNTY	TOTAL SHEETS	SHEET NO.	
pw:\IL084EBIDINTEG\ilnotes.gov\PWIDOT\Documents\DOT Offices\District 3\Projects\0366J33\CADData\66J33-details.dgn	DRAWN - JW	REVISIED -				80	(32-3)K & PP	GRUNDY	13	13	
Default	PLOT SCALE = 100.0000' / in.	CHECKED - JW	REVISED -			CONTRACT NO. 66J33					
	PLOT DATE = 4/13/2018	DATE - 03/15/2018	REVISED -			SCALE:	SHEET 1	OF 1	SHEETS	STA.	TO STA.