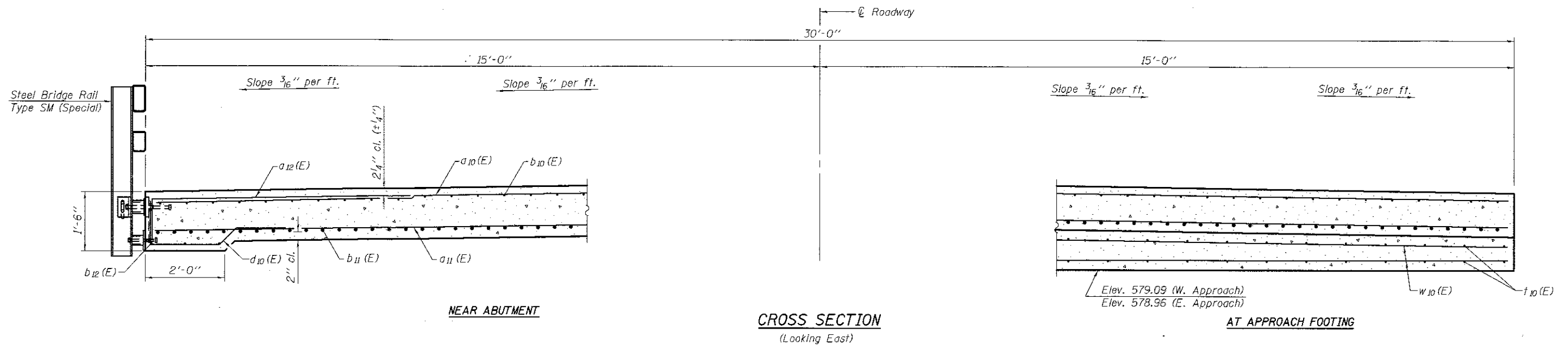


PLAN

See Sheet 10 of 19 for Section A-A.



NEAR ABUTMENT

CROSS SECTION
(Looking East)

AT APPROACH FOOTING

FEHR GRAHAM
ENGINEERING & ENVIRONMENTAL

ILLINOIS
IOWA
WISCONSIN

OWNER/DEVELOPER:
GRUNDY COUNTY HWY. DEPT.
245 NORTH ILLINOIS ROUTE 47
MORRIS, IL 60450

PROJECT AND LOCATION:
SECTION 16-00159-00-BR
C.H. C41/GRAND RIDGE ROAD
PROJECT YQ35(110)

DESIGNED: ARK
CHECKED: GJB
DRAWN: MMY
CHECKED: ARK-MCB

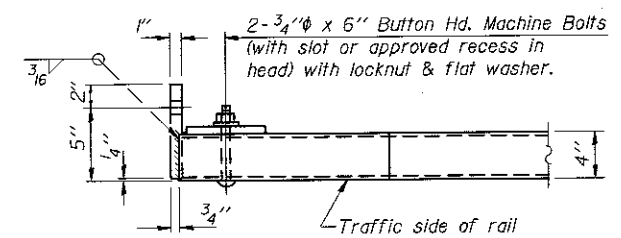
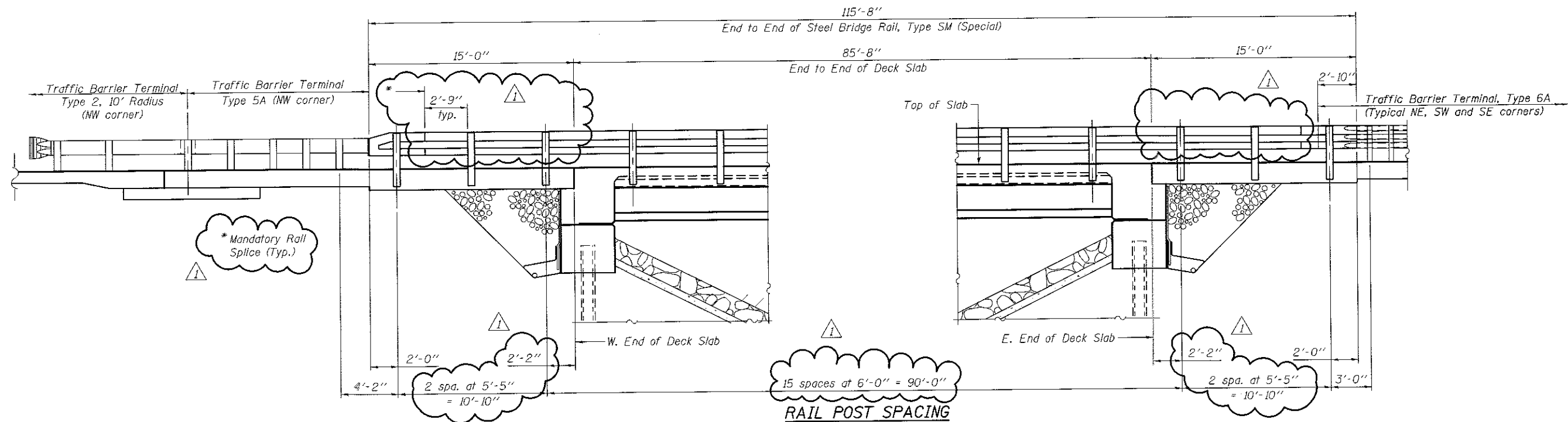
REVISIONS		
REV. NO.	DESCRIPTION	DATE
1	Rail Spacing	7/23/18

DRAWING:
BRIDGE APPROACH SLAB DETAILS
STRUCTURE NUMBER 032-3211

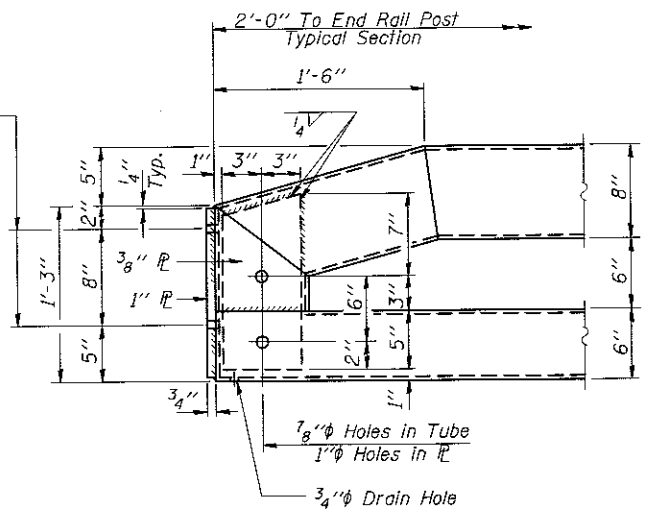
JOB NUMBER:
16-096

SHEET NUMBER
15 of 28

16-096-09-approach.dgn
CONTRACT #: 87643



1 1/8" φ Holes for 1" φ x 4" Round Head Bolts. Provide 2 flat washers & locknuts for guardrail connection shown on Std. BLR 27.



END OF RAIL DETAILS
DEPARTURE END
(NW Corner)

FEHR GRAHAM
ENGINEERING & ENVIRONMENTAL
ILLINOIS DESIGN FIRM NO. 184-003525

ILLINOIS
IOWA
WISCONSIN

OWNER/DEVELOPER:
GRUNDY COUNTY HWY. DEPT.
245 NORTH ILLINOIS ROUTE 47
MORRIS, IL 60450

PROJECT AND LOCATION:
SECTION 16-00159-00-BR
C.H. C41/GRAND RIDGE ROAD
PROJECT YQ35(110)

DESIGNED: ARK
CHECKED: GJB
DRAWN: MMY
CHECKED: ARK-MCB

REVISIONS		
REV. NO.	DESCRIPTION	DATE
1	Rail Spacing	7/23/18

DRAWING:
STEEL BRIDGE RAIL, TYPE SM (SPECIAL)
RAIL POST SPACING
STRUCTURE NUMBER 032-3211
16-096-15-rail1.dgn

JOB NUMBER:
16-096

SHEET NUMBER
21 of 28

CONTRACT #: 87643