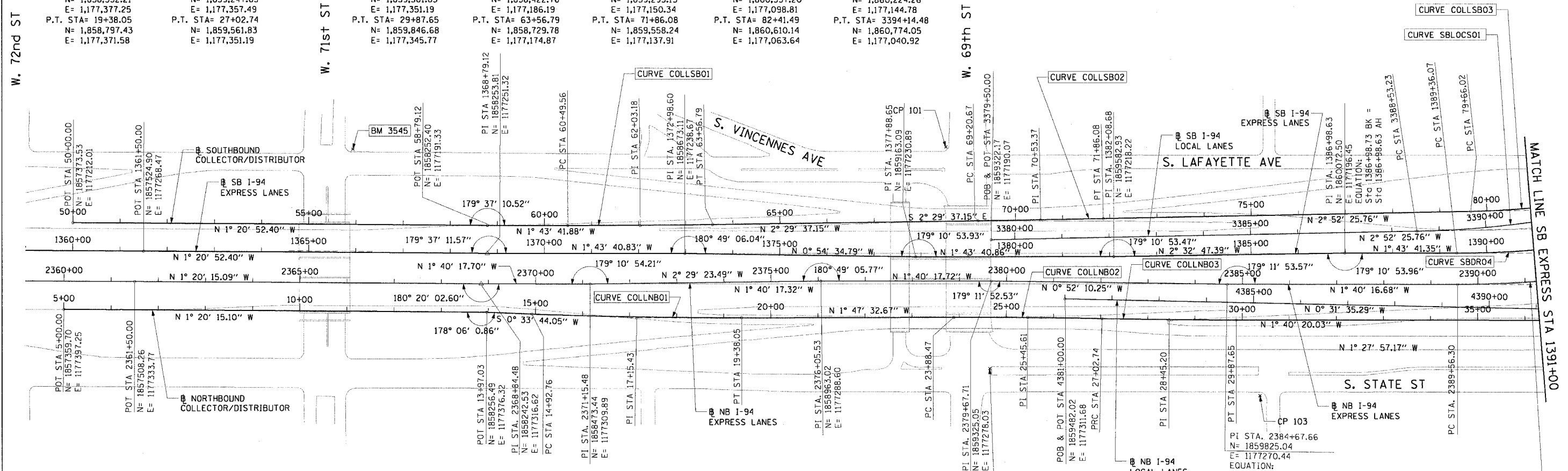


F.A.I. RTE.	SECTION	COUNTY	TOTAL SHEETS	SHEET NO.
90/94	*	COOK	312	24
STA.		TO STA.		
FED. ROAD DIST. NO. 1		ILLINOIS FED. AID PROJECT		
60A62		* (019.15, 2021-922 PT1) & PT2) R-1		

CURVE COLLNBO1	CURVE COLLNBO2	CURVE COLLNBO3	CURVE COLLSBO1	CURVE COLLSBO2	CURVE COLLSBO3	CURVE SBLOCSO1
P.I. STA= 17+15.43 N= 1,858,574.87 E= 1,177,378.55 Δ= 2° 07' 33" D= 0° 28' 38" R= 12,000.00' T= 222.67' L= 445.29 E= 2.06' e= N/A T.R.= N/A S.E. RUN= N/A P.C. STA= 14+92.76 N= 1,858,352.21 E= 1,177,377.25 P.T. STA= 19+38.05 N= 1,858,797.43 E= 1,177,371.58	P.I. STA= 25+45.61 N= 1,859,404.70 E= 1,177,352.58 Δ= 1° 17' 10" D= 0° 24' 33" R= 14,000.00' T= 157.14' L= 314.27 E= 0.88' e= N/A T.R.= N/A S.E. RUN= N/A P.C. STA= 23+88.47 N= 1,859,247.63 E= 1,177,357.49 P.T. STA= 27+02.74 N= 1,859,561.83 E= 1,177,351.19	P.I. STA= 28+45.20 N= 1,859,704.28 E= 1,177,349.93 Δ= 1° 09' 57" D= 0° 24' 33" R= 14,000.00' T= 142.45' L= 284.90 E= 0.72' e= N/A T.R.= N/A S.E. RUN= N/A P.C. STA= 27+02.74 N= 1,859,561.83 E= 1,177,351.19 P.T. STA= 29+87.65 N= 1,859,846.68 E= 1,177,345.77	P.I. STA= 62+03.18 N= 1,858,576.31 E= 1,177,181.55 Δ= 0° 45' 55" D= 0° 14' 56" R= 23,000.00' T= 153.61' L= 307.23 E= 0.51' e= N/A T.R.= N/A S.E. RUN= N/A P.C. STA= 60+49.56 N= 1,858,422.76 E= 1,177,186.19 P.T. STA= 63+56.79 N= 1,858,729.78 E= 1,177,174.87	P.I. STA= 70+53.37 N= 1,859,425.70 E= 1,177,144.56 Δ= 0° 22' 48" D= 0° 14' 56" R= 40,000.00' T= 132.70' L= 265.40 E= 0.22' e= N/A T.R.= N/A S.E. RUN= N/A P.C. STA= 69+20.67 N= 1,859,293.13 E= 1,177,150.34 P.T. STA= 71+86.08 N= 1,859,558.24 E= 1,177,137.91	P.I. STA= 81+04.03 N= 1,860,475.04 E= 1,177,091.89 Δ= 8° 56' 14" D= 0° 14' 56" R= 1,766.00' T= 138.01' L= 275.46 E= 5.38' e= N/A T.R.= N/A S.E. RUN= N/A P.C. STA= 79+66.02 N= 1,860,337.20 E= 1,177,098.81 P.T. STA= 82+41.49 N= 1,860,610.14 E= 1,177,063.64	P.I. STA= 3391+35.61 N= 1,860,506.29 E= 1,177,130.62 Δ= 15° 38' 54" D= 2° 47' 17" R= 2,055.00' T= 282.39' L= 561.26' E= 19.31' e= 5.5% T.R.= 41' S.E. RUN= 196' P.C. STA= 3388+53.23 N= 1,860,224.26 E= 1,177,144.78 P.T. STA= 3394+14.48 N= 1,860,774.05 E= 1,177,040.92



BENCH MARK NO. 3528 ELEV. 16.20 DESCRIPTION: CROSS CUT ON NORTHWESTERLY BOLT OF FIRE HYDRANT AT THE NORTHWEST CORNER OF 45TH ST AND WENTWORTH AVE	BENCH MARK NO. 3535 ELEV. 19.31 DESCRIPTION: FOUND CROSS CUT ON SOUTHERLY FLANGE BOLT OF FIRE HYDRANT AT THE NORTHEAST CORNER OF 59TH ST AND WENTWORTH AVE
BENCH MARK NO. 3530 ELEV. 18.18 DESCRIPTION: CROSS CUT ON SOUTHEAST BOLT OF LIGHT POLE BASE AT THE NORTHWEST CORNER OF 51ST ST AND WELLS ST	BENCH MARK NO. 3536 ELEV. 18.37 DESCRIPTION: CROSS CUT ON SOUTHEASTERLY FLANGE BOLT OF FIRE HYDRANT AT THE SOUTHEAST CORNER OF GARFIELD BLVD AND WENTWORTH AVE
BENCH MARK NO. 3531 ELEV. 17.55 DESCRIPTION: CROSS CUT ON NORTHEASTERLY FLANGE BOLT OF FIRE HYDRANT AT THE NORTHEAST CORNER OF GARFIELD BLVD AND WELLS ST	BENCH MARK NO. 3537 ELEV. 17.71 DESCRIPTION: CROSS CUT ON NORTHEASTERLY FLANGE BOLT OF FIRE HYDRANT AT THE NORTHEAST CORNER OF 51ST ST AND WENTWORTH AVE
BENCH MARK NO. 3532 ELEV. 18.84 DESCRIPTION: HORIZONTAL BOLT ON CTA "EL" STRUCTURE, EAST SIDE OF WELLS ST ABOUT 50 FEET NORTH OF 59TH PL.	BENCH MARK NO. 3538 ELEV. 17.31 DESCRIPTION: CROSS CUT ON EASTERLY FLANGE BOLT OF FIRE HYDRANT AT THE NORTHEAST CORNER OF 47TH ST AND LASALLE ST
BENCH MARK NO. 3533 ELEV. 19.71 DESCRIPTION: BRASS DISK (CTA MONUMENT) AT THE SOUTHWEST CORNER OF 63RD ST AND HARVARD ST	BENCH MARK NO. 3544 ELEV. 19.38 DESCRIPTION: CROSS CUT ON WESTERLY FLANGE BOLT OF FIRE HYDRANT AT THE NORTHWEST CORNER OF 67TH ST AND LAFAYETTE AVE
BENCH MARK NO. 3545 ELEV. 10.53 DESCRIPTION: CROSS CUT ON NORTHWEST BOLT OF LIGHT POLE BASE AT THE NORTHWEST CORNER OF 71ST ST AND LAFAYETTE AVE	

NOTES:
1. AVERAGE GRID TO GROUND CONVERSION FACTOR = 1.000010988654360

REVISIONS	
NAME	DATE

ALT-1
ILLINOIS DEPARTMENT OF TRANSPORTATION
F.A.I. 90/94 (DAN RYAN EXPRESSWAY)
63RD STREET TO GARFIELD BLVD (NB LOCAL LANES)
ALIGNMENT PLAN
SCALE: 1"=100'
DATE: June 9, 2006
DRAWN BY: NJH/AM
CHECKED BY: JAL/MS



F:\90468\Ch118\Chrs 18 & 19\SP\Ch118\18A\alignm\AU18A02025.dwg 3/13/06 6/5/2006