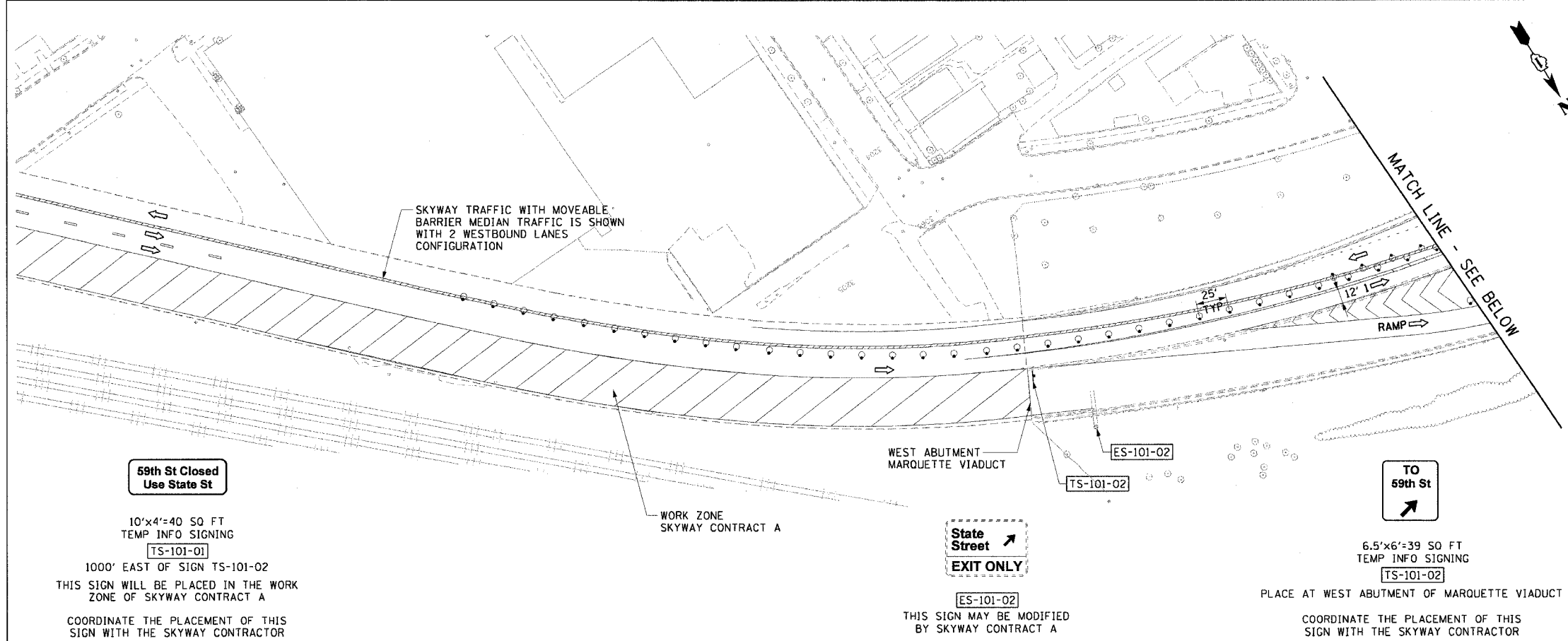
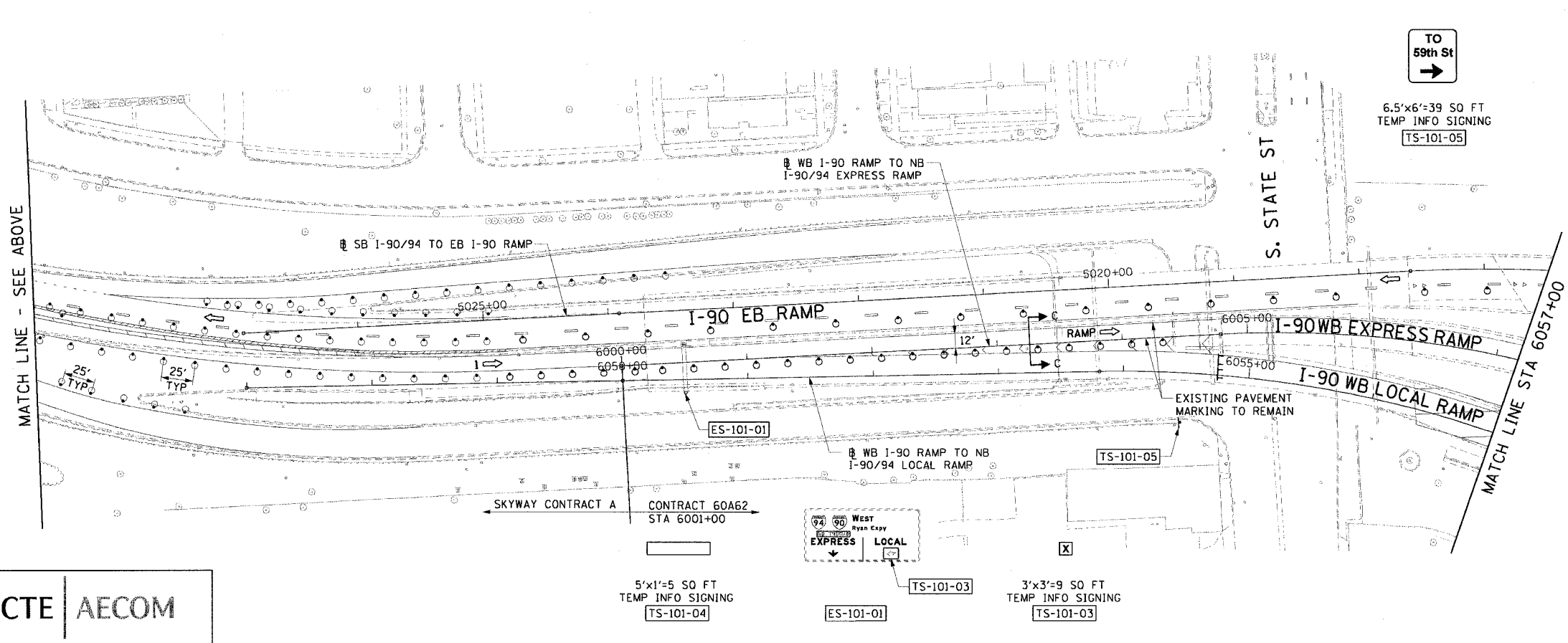


F.A.I. RTE.	SECTION	COUNTY	TOTAL SHEETS	SHEET NO.
90/94	*	COOK	312	49
STA. 6056+35.37 TO STA. 6057+00				
FED. ROAD DIST. NO. 1 ILLINOIS FED. AID PROJECT				
60A62 * (1919.15, 2021-922 PT1 & PT2) R-1				



- LEGEND:**
- 1 → LANE NUMBER AND DIRECTION OF TRAFFIC
  - [Hatched Box] WORK AREA
  - [Diagonal Lines Box] TEMPORARY PAVEMENT
  - [Dashed Line] IMPACT ATTENUATORS, TEMPORARY (NON-REDIRECTIVE), TEST LEVEL 3
  - DRUM OR BARRICADE TYPE II WITH STEADY BURNING LIGHT
  - ⊥ BARRICADE TYPE III
  - [Double Line] TEMPORARY CONCRETE BARRIER
  - ① LINE 4" (YELLOW EDGE)
  - ② LINE 4" (WHITE EDGE)
  - ③ LINE 4" (SKIP DASH, 6' SKIP - 2' DASH, WHITE)
  - ④ LINE 5" (SKIP DASH, 30' SKIP - 10' DASH, WHITE)
  - ⑤ LINE 8" (WHITE GORE LINE)
  - ⑥ LINE 8" (SKIP DASH, 12' SKIP - 3' DASH, WHITE)
  - ⑦ LINE 12" (DIAGONAL, 30' C-C, WHITE)
  - ⑧ LETTERS AND SYMBOLS
  - ES-XXX-XX EXISTING OVERHEAD OR CANTILEVER SIGNS
  - GS-XXX-XX EXISTING POST MOUNTED SIGNS
  - TS-XXX-XX TEMPORARY SIGNS
- +XX.XX STATION PROVIDED FROM THE ± SB I-90/94 EXPRESS LANES  
 (+XX.XX) STATION PROVIDED FROM THE ± SB I-90/94 LOCAL LANES



- NOTES:**
- SEE SHEET MOTTS-01 FOR TYPICAL SECTIONS.
  - SEE TEMPORARY SIGN PANEL SHEETS FOR DETAILS.

REVISIONS	
NAME	DATE

MOT-101

ILLINOIS DEPARTMENT OF TRANSPORTATION  
 F.A.I. 90/94 (DAN RYAN EXPRESSWAY)  
 63RD STREET TO GARFIELD BLVD (NB LOCAL LANES)

**SUGGESTED STAGES OF CONSTRUCTION AND TRAFFIC CONTROL STAGE 1**

SCALE: 1"=50'  
 DATE: June 9, 2006  
 DRAWN BY: PHP  
 CHECKED BY: RMG

CTE | AECOM

6/2/2006 3:33:43 PM