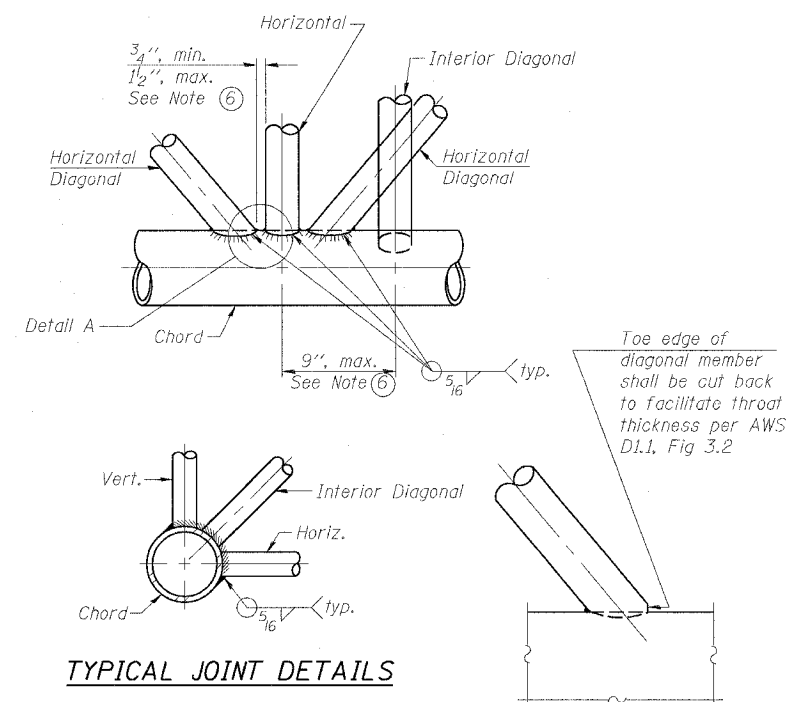
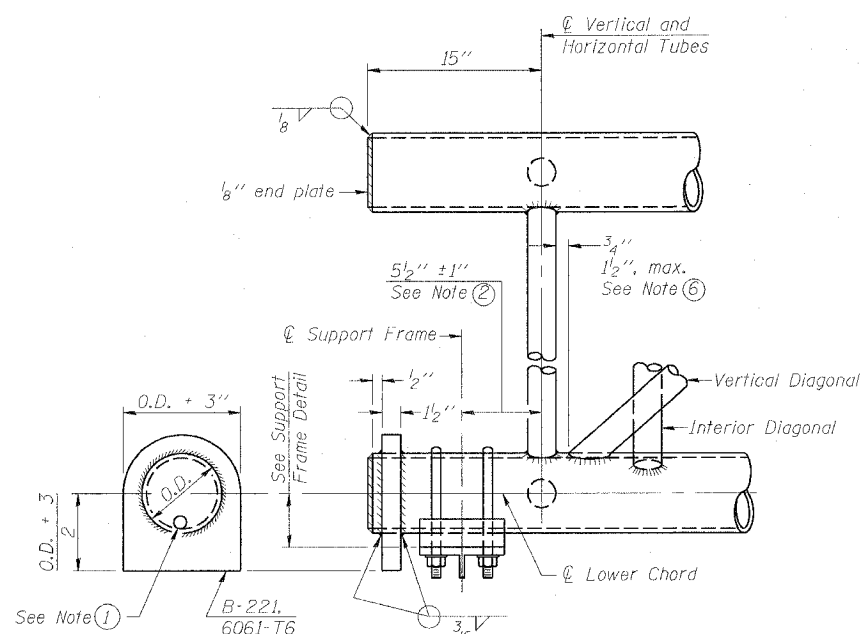
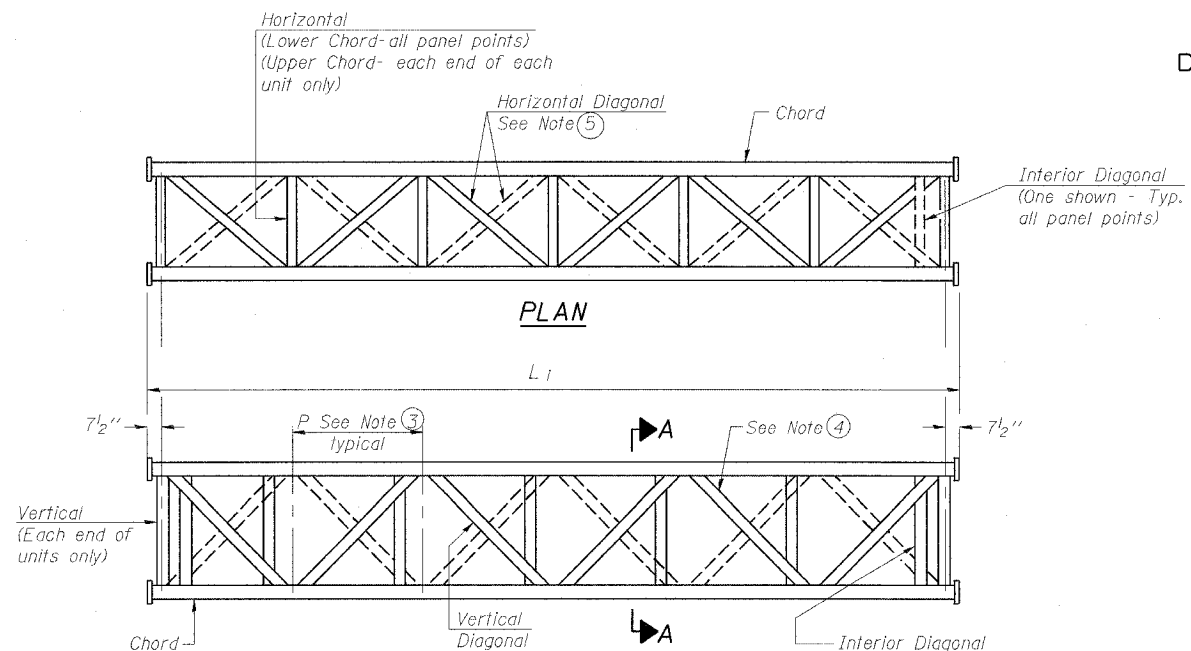
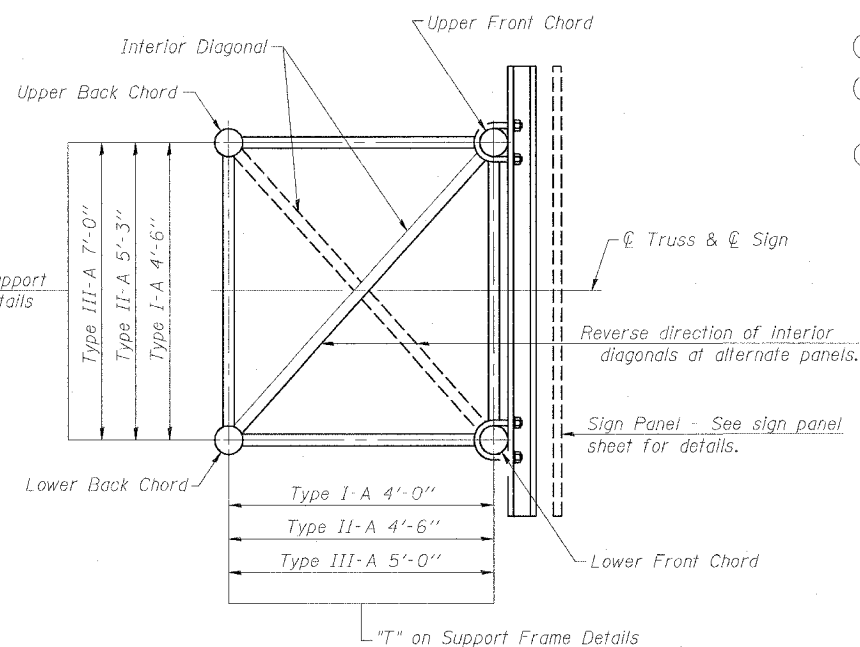
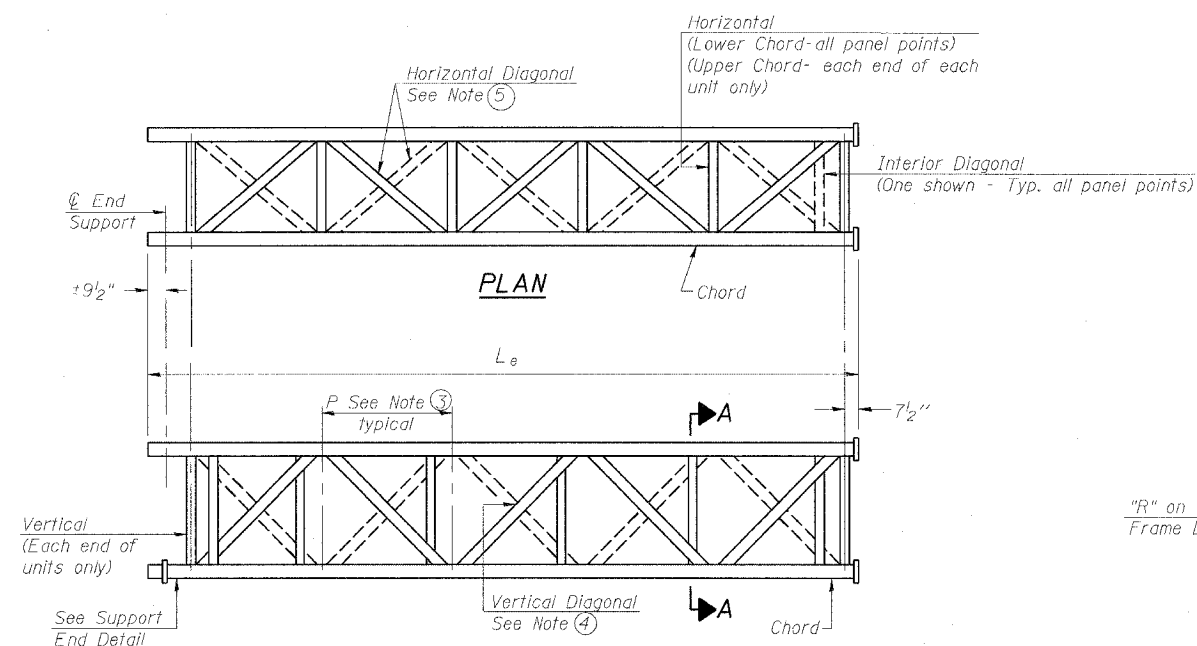


STATE OF ILLINOIS
DEPARTMENT OF TRANSPORTATION

| | | | | |
|-------------------------------|---------|----------|------------------|--------------|
| ROUTE NO. | SECTION | COUNTY | SHEET NO. | TOTAL SHEETS |
| F.A.I. RTE. 90/94 | | COOK | 312 | 141 |
| FED. ROAD DIST. NO. 1 | | ILLINOIS | FED. AID PROJECT | |
| (1919,15 & 2021-922 PT.1) R-1 | | | 60A62 | |



- NOTES**
- Contractor may alternatively use standard aluminum drive-fit cap to close end. 1/2" ϕ drain hole in end plate/drive-fit cap. (Typ. at ends of all chords)
 - 5 1/2" end dimension may vary by $\pm 1"$ to provide uniform panel spacing (P).
 - Panel spacing (P) shall be uniform for entire truss and between 4'-0" and 5'-0" for Type I-A or 4'-0" and 5'-6" for Types II-A and III-A.
 - Vertical Diagonals in front and back face shall alternate.
 - Hidden lines show wind bracing alternates direction between planes of top and bottom chords.
 - All diagonals shall be detailed for minimum offset from the panel point based on the following: Offset shall be such as to provide a 3/4" minimum to 1 1/2" maximum clearance between any diagonal and any horizontal or vertical member, and to provide clearance for U-bolt connections of signs or walkway brackets.



| | |
|----------------|----------|
| DESIGNED - JSS | 20 |
| CHECKED - RDP | EXAMINED |
| DRAWN - JSS | PASSED |
| CHECKED - RDP | |

| | |
|----|------------------------------------|
| 20 | ENGINEER OF STRUCTURAL SERVICES |
| | ENGINEER OF BRIDGES AND STRUCTURES |

| NUMBER | REVISION | DATE |
|--------|----------|------|
| | | |
| | | |
| | | |
| | | |

OS-A-2

1-7-05

OVERHEAD SIGN STRUCTURES
ALUMINUM TRUSS DETAILS
FOR TRUSS TYPES I-A, II-A and III-A

F.A.I. 90/94 (DAN RYAN EXPRESSWAY)
63RD STREET TO GARFIELD BLVD (NB LOCAL LANES)
PROPOSED IMPROVEMENT
63RD STREET TO GARFIELD BLVD

OSS-14

6/27/2006 11:55 AM