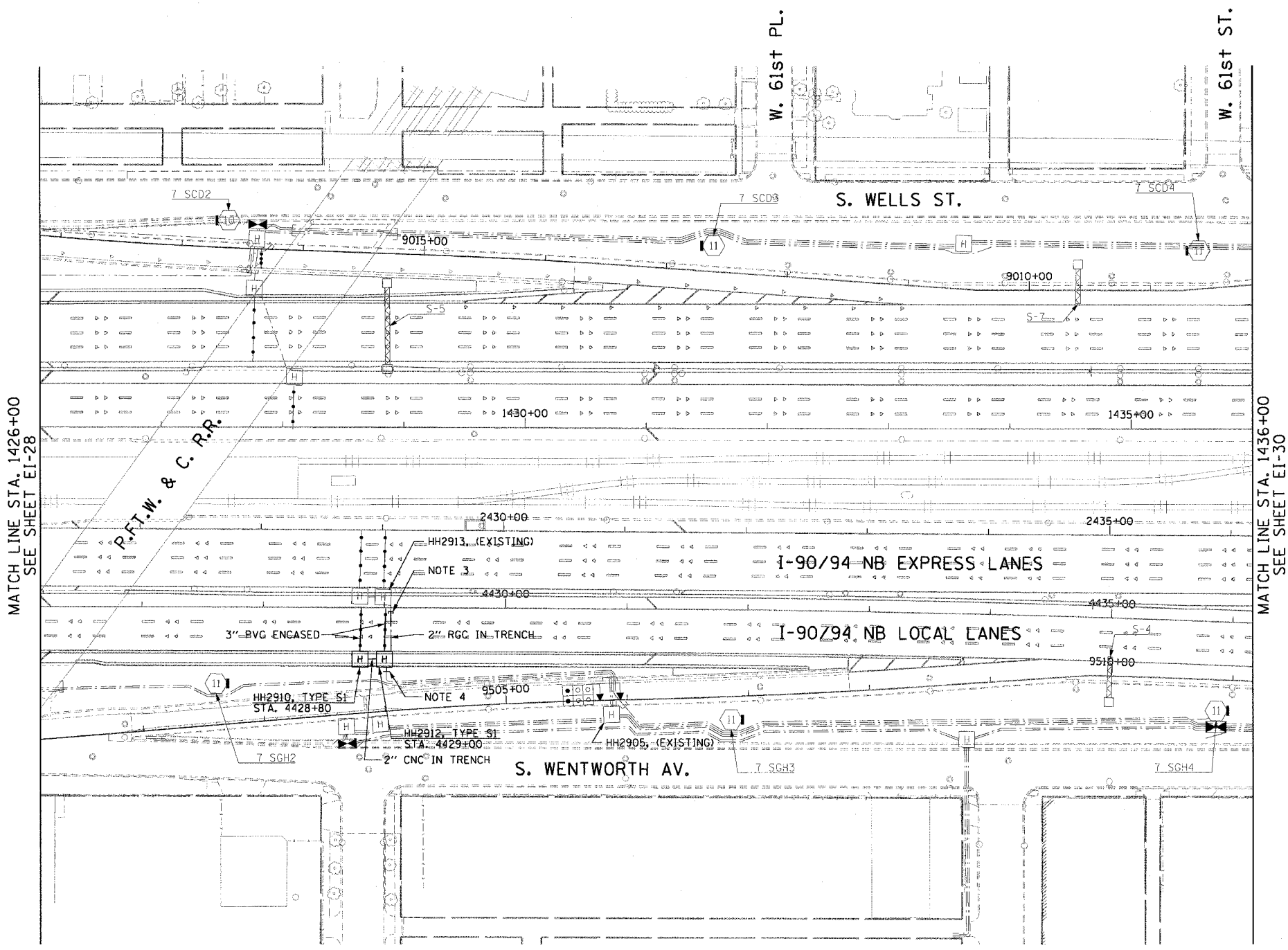
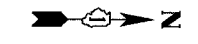


F.A.I. RTE.	SECTION	COUNTY	TOTAL SHEETS	SHEET NO.
90/94		COOK	312	180
STA. 1426+00.00		TO STA. 1436+00.00		
FED. ROAD DIST. NO. 1		ILLINOIS FED. AID PROJECT		
60A62		(1919.15, 2021-922 PT1 & PT2) R-1		

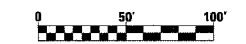
NOTES:

- SEE DRAWINGS EI-100 AND EI-101 FOR ELECTRICAL SYMBOLS AND ABBREVIATIONS.
- SEE DRAWINGS EI-102, EI-103, AND EI-104 FOR TYPICAL HANDHOLE INSTALLATION DETAILS.
- THE CONTRACTOR SHALL LOCATE THE EXISTING CONDUIT STUB-OUT INSTALLED IN IDOT CONTRACT NO. 62300 AND CONNECT THE PROPOSED CONDUIT.
- THE CONTRACTOR SHALL PROVIDE A 2" RGC SLEEVE IN THE EAST SIDE OF HH2912 FOR A 2" CNC DUCT FROM HH2905 BEING INSTALLED IN CONTRACT 62583. SLEEVE SHALL EXTEND 2' EAST OF CURB. COORDINATE WITH CONTRACT 62583.
- UNLESS NOTED OTHERWISE, ALL ITEMS AND WORK SHOWN IN HEAVY LINE WEIGHT ON THIS DRAWING ARE PROPOSED NEW ITEMS AND WORK.



MATCH LINE STA. 1426+00
SEE SHEET EI-28

MATCH LINE STA. 1436+00
SEE SHEET EI-30



EI-29

REVISIONS	
NAME	DATE

ILLINOIS DEPARTMENT OF TRANSPORTATION
F.A.I. 90/94 (DAN RYAN EXPRESSWAY)
63RD STREET TO GARFIELD BLVD (NB LOCAL LANES)

ELECTRICAL INFRASTRUCTURE PLAN

SCALE: 1"=50'
DATE: June 9, 2006
DRAWN BY: HAR
CHECKED BY: JPC

CTE | AECOM

06/02/2006 03:51:20 PM