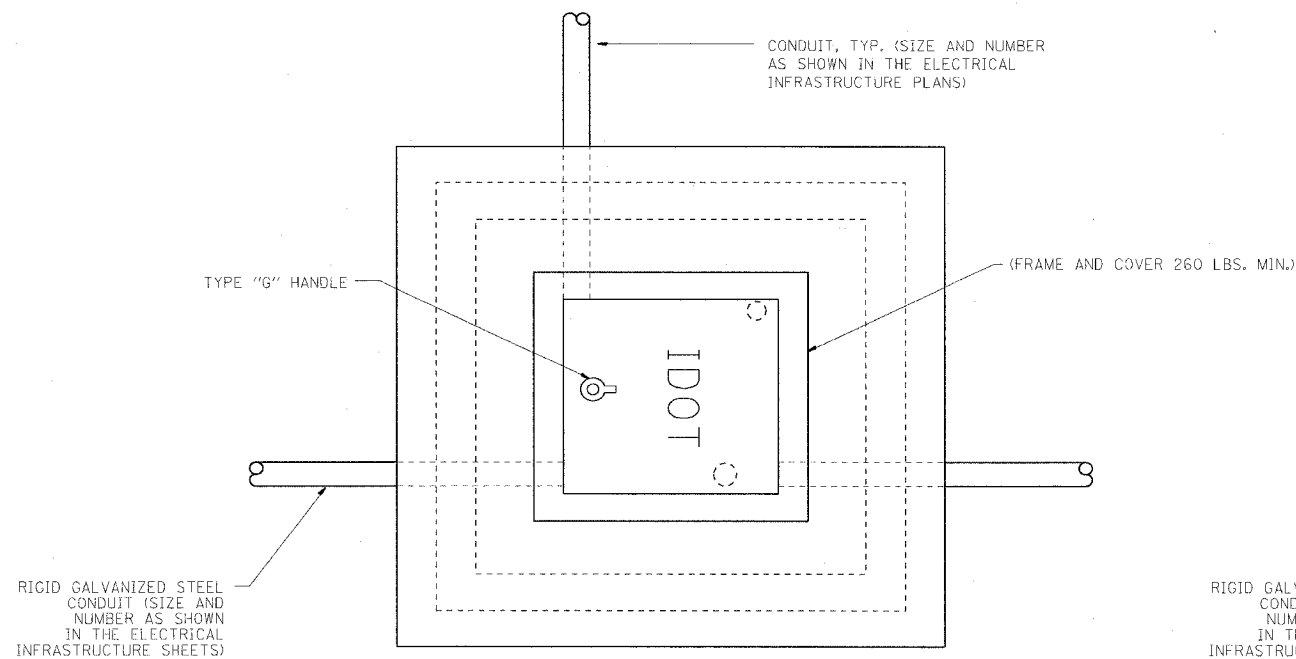
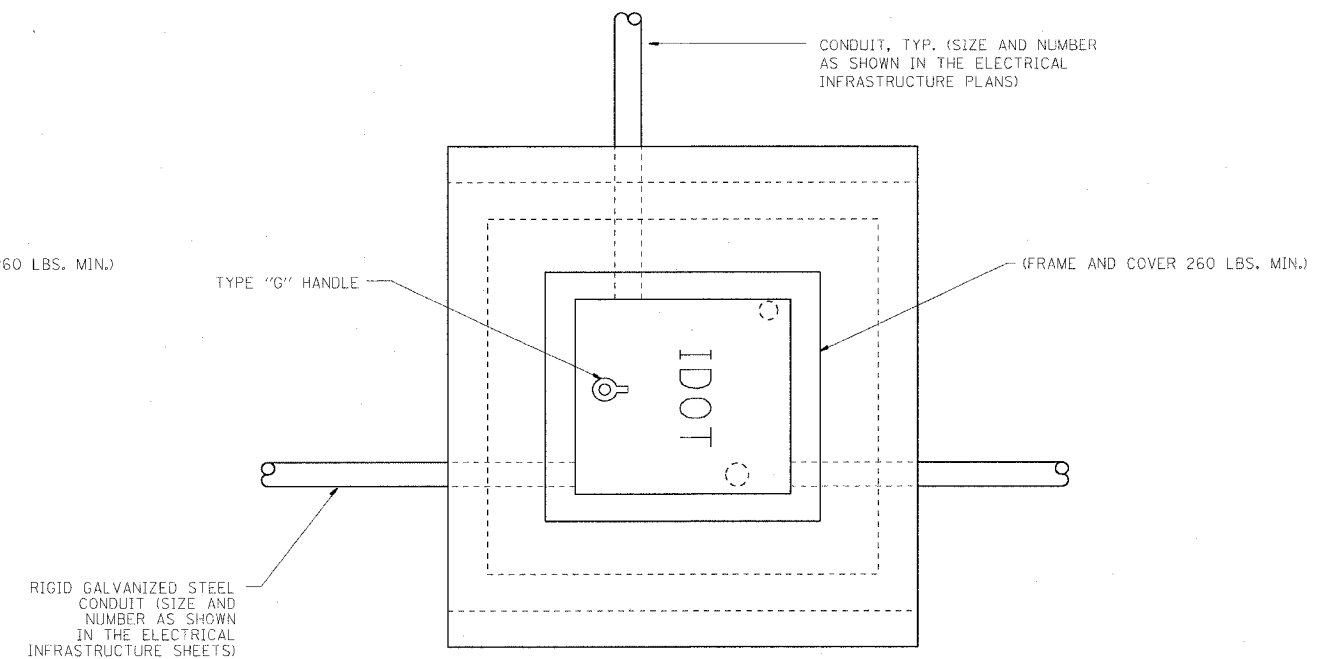


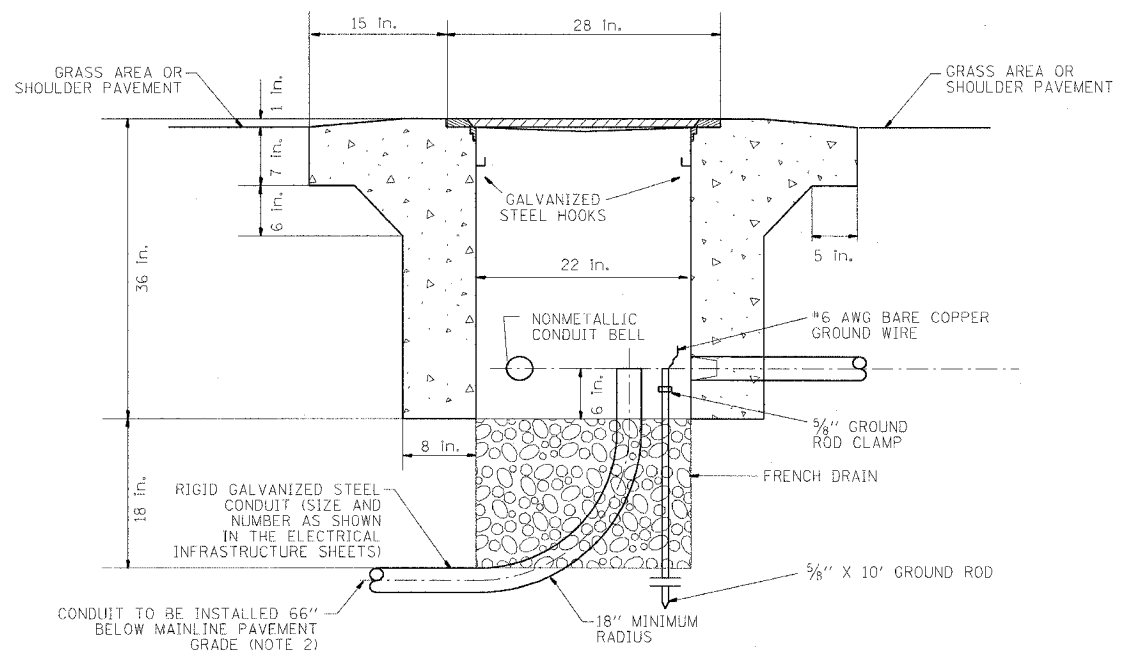
F.A.I. RTE.	SECTION	COUNTY	TOTAL SHEETS	SHEET NO.
90/94	*	COOK	312	189
STA.		TO STA.		
FED. ROAD DIST. NO. 1		ILLINOIS FED. AID PROJECT		
60A62		• (1919.15, 2021-922 PT1 & PT2) R-1		



PLAN



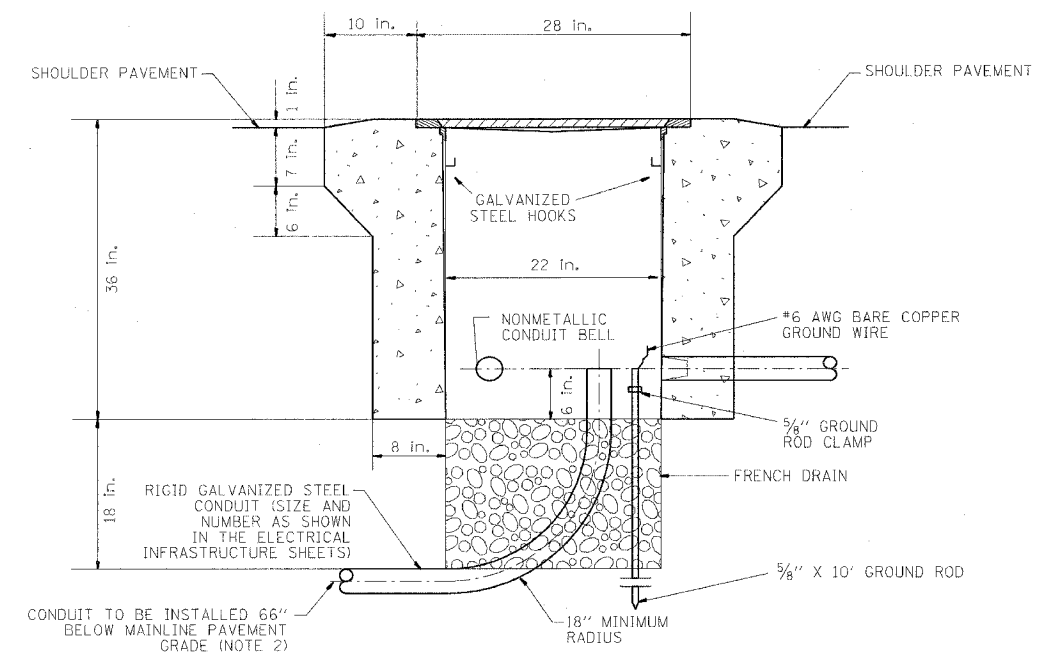
PLAN



ELEVATION

**PC CONCRETE  
HEAVY DUTY HANDHOLE, TYPE S1**

(FOR INSTALLATION IN SHOULDER WIDER THAN 6' OR BEHIND PAVED AREA)



ELEVATION

**PC CONCRETE  
HEAVY DUTY HANDHOLE, TYPE S1 (SPECIAL)**

(FOR INSTALLATION IN SHOULDER NARROWER THAN 6', 4' MINIMUM WIDTH)

- NOTE:**
1. ALL METALLIC ELEMENTS SHALL BE GROUND IN ACCORDANCE WITH THE NATIONAL ELECTRIC CODE (NEC), SECTION 250. GROUNDING METAL COVERS AND OTHER EXPOSED CONDUCTIVE SURFACES SHALL BE BONDED IN ACCORDANCE WITH NEC ARTICLE 250.96 (A).
  2. CONDUIT TO BE INSTALLED BELOW MAINLINE PAVEMENT WHERE SHOWN IN THE ELECTRICAL INFRASTRUCTURE PLANS (SEE SHEET EI-103).

REVISIONS	
NAME	DATE

ILLINOIS DEPARTMENT OF TRANSPORTATION  
F.A.I. 90/94 (DAN RYAN EXPRESSWAY)  
63RD STREET TO GARFIELD BLVD (NB LOCAL LANES)  
**PC CONCRETE - HEAVY DUTY HANDHOLE  
DETAIL, TYPE S1 AND  
TYPE S1 SPECIAL**

SCALE: NOT TO SCALE  
DATE: June 9, 2006

DRAWN BY: HAR  
CHECKED BY: JPC