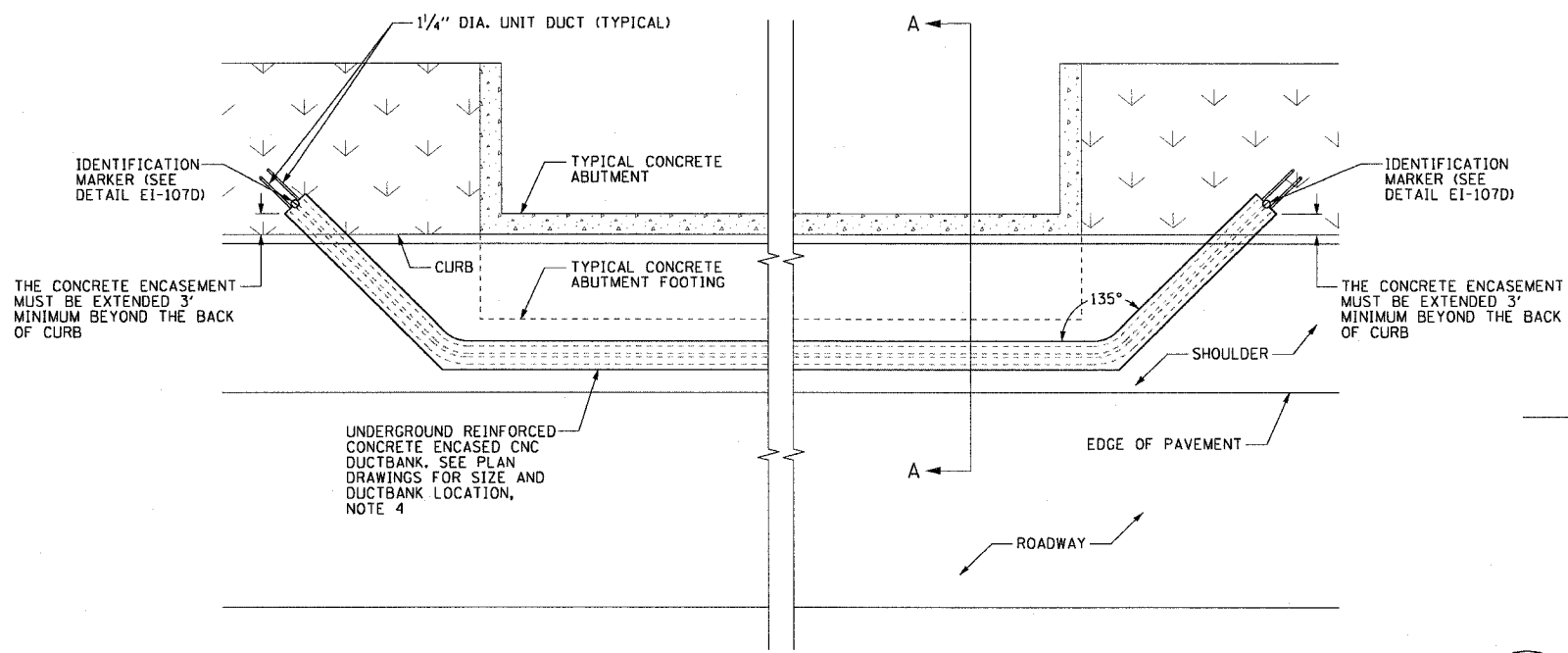
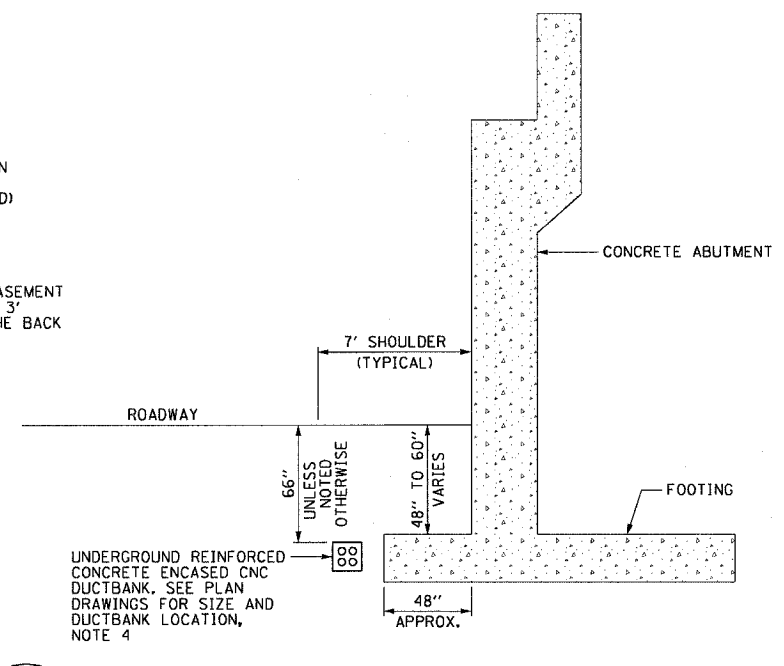


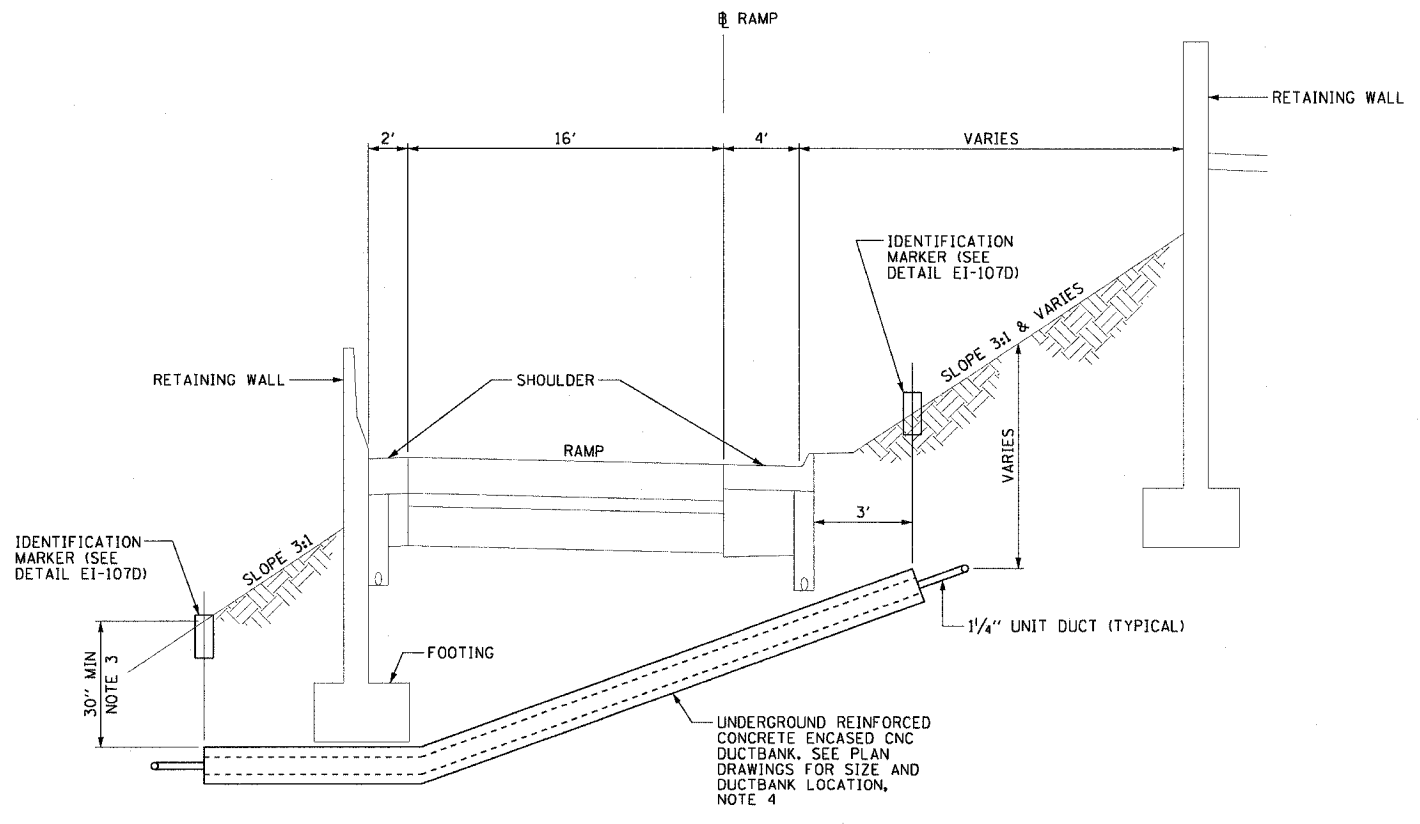
F.A.I. RTE.	SECTION	COUNTY	TOTAL SHEETS	SHEET NO.
90/94	*	COOK	312	192
STA.		TO STA.		
FED. ROAD DIST. NO. 1		ILLINOIS FED. AID PROJECT		
60A62		1919.15, 2021-922 PT1 & PT2) R-1		



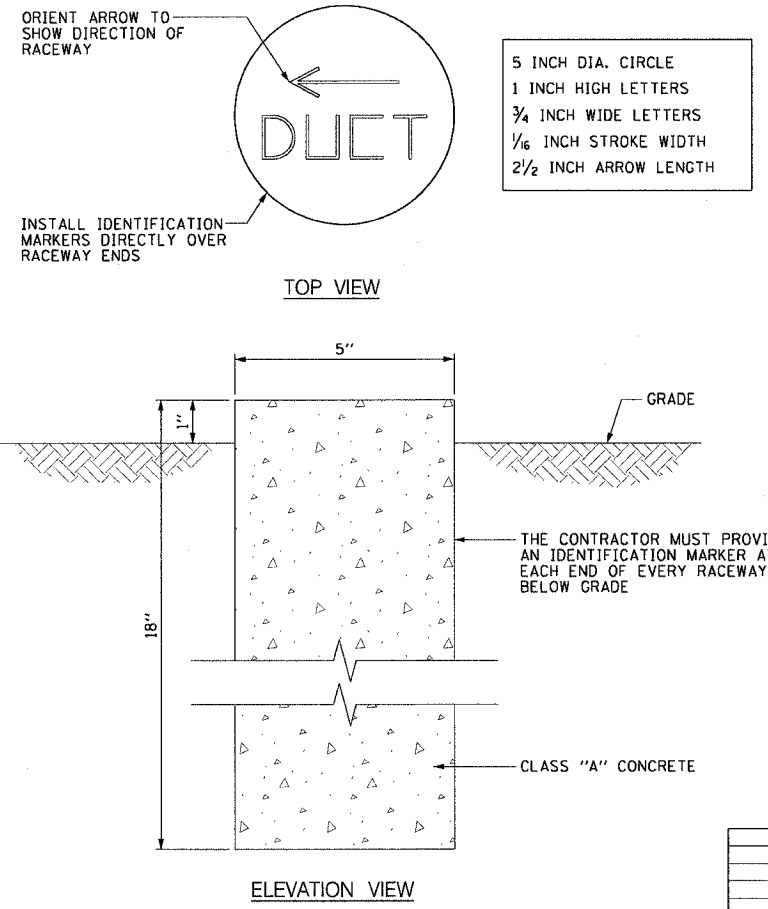
EI-107A DUCTBANK ROUTING AROUND ABUTMENT
SCALE: 1/4" = 1'-0"



EI-107B DUCTBANK INSTALLATION DETAIL A-A
SCALE: 1/4" = 1'-0"

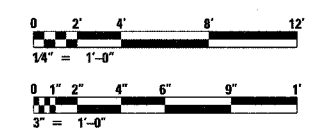


EI-107C TYPICAL CONCRETE ENCASED CNC UNDER RAMP INSTALLATION DETAIL
NOT TO SCALE



EI-107D IDENTIFICATION MARKER DETAIL
SCALE: 3" = 1'-0"

- NOTES:**
- SEE DRAWINGS EI-100 AND EI-101 FOR ELECTRICAL SYMBOLS AND ABBREVIATIONS.
 - SEE PLAN DRAWINGS FOR THE PROPOSED CONDUIT ROUTING.
 - DUCTBANK DEPTH MUST BE ADJUSTED SUCH THAT THE TOP OF CONCRETE ENCASEMENT IS INSTALLED UNDER THE RETAINING WALL FOOTING. FOR SOLDIER PILE TYPE RETAINING WALLS THE DUCTBANK IS ROUTED BETWEEN PILES. THE DUCTBANK DEPTH MUST BE 30 INCHES MINIMUM.
 - SEE DRAWING EI-106 FOR ELECTRICAL CONCRETE DUCTBANK DETAILS.
 - SEE PLAN DRAWINGS FOR ANY DEVIATIONS IN DUCTBANK DEPTH.



REVISIONS	
NAME	DATE

ILLINOIS DEPARTMENT OF TRANSPORTATION
F.A.I. 90/94 (DAN RYAN EXPRESSWAY)
63RD STREET TO GARFIELD BLVD (NB LOCAL LANES)

**DUCTBANK INSTALLATION DETAILS
UNDER RAMP AND AROUND
ABUTMENTS**

SCALE: AS SHOWN
DATE: June 9, 2006

DRAWN BY: HAR
CHECKED BY: JPC



6/9/02/2006 03:59:45 PM