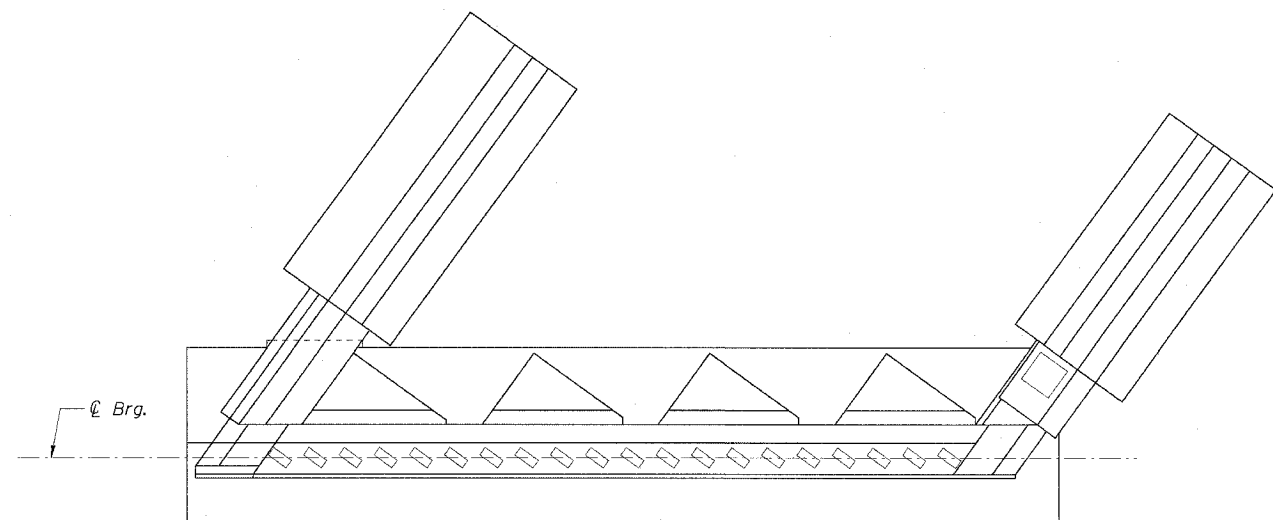
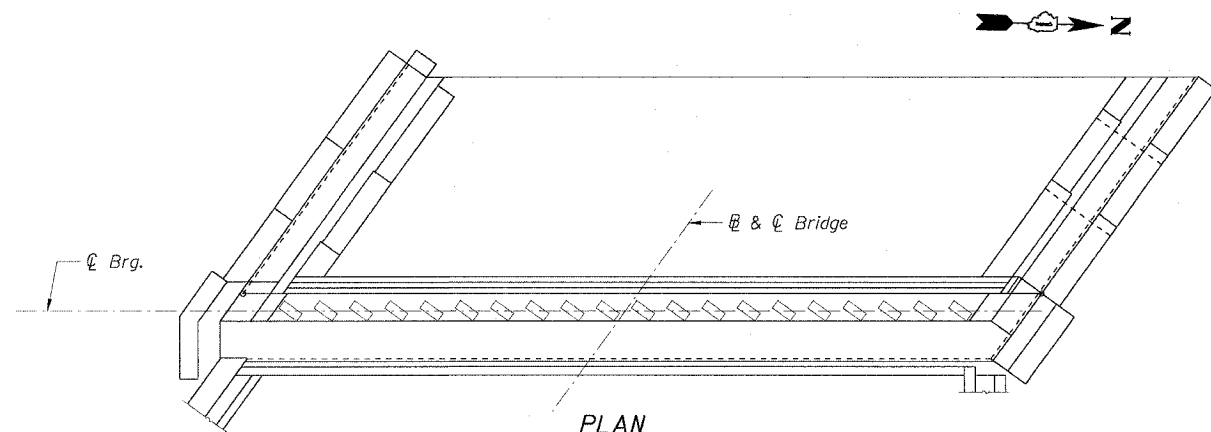


STATE OF ILLINOIS
DEPARTMENT OF TRANSPORTATION

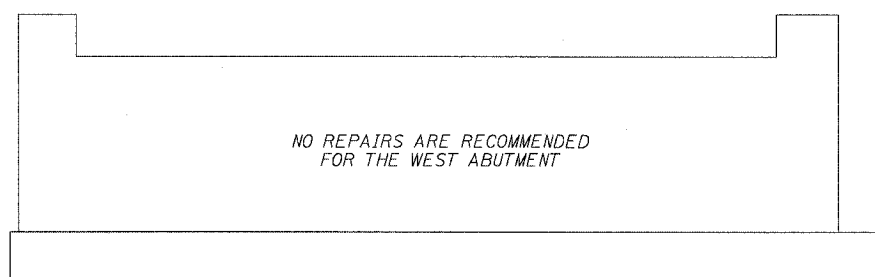
F.A.I. RTE.	SECTION	COUNTY	TOTAL SHEETS	SHEET NO.
90/94	*	COOK	312	229
STA.	TO STA.			
FED. ROAD DIST. NO. 1	ILLINOIS	FED. AID PROJECT		
60A62	11919.15, 2021-922 PT1 & PT2) R-1			



PLAN
WEST ABUTMENT
(S.N. 016-0142)

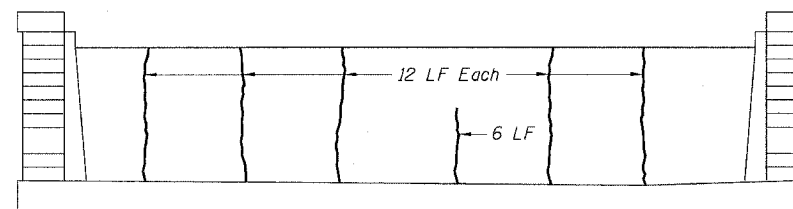


PLAN
EAST ABUTMENT
(S.N. 016-0142)



ELEVATION
WEST ABUTMENT-EAST FACE
(S.N. 016-0142)

NO REPAIRS ARE RECOMMENDED
FOR THE WEST ABUTMENT



ELEVATION
EAST ABUTMENT - WEST FACE
(S.N. 016-0142)

LEGEND

Epoxy Crack Sealing

CTE | AECOM

BILL OF MATERIAL			
Item	Unit	Quantity	
		East Abutment	
		East Face	West Face
Epoxy Crack Sealing	LF		66

REVISIONS	
NAME	DATE

ILLINOIS DEPARTMENT OF TRANSPORTATION
F.A.I. 90/94 (DAN RYAN EXPRESSWAY)
63RD STREET TO GARFIELD BLVD (NB LOCAL LANES)
**EAST ABUTMENT - PLAN AND ELEVATION
SUBSTRUCTURE AND ABUTMENT REPAIRS
CONRAIL BRIDGE (SN 016-0142)
COOK COUNTY**

SCALE: None
DATE: June 9, 2006
DRAWN BY: CHD
CHECKED BY: MJP

Sheet BR5 of 5

6/2/2006 11:08:22 AM P:\40468-Struct\08-Chr\1889\CHT18\AS\N\T\18400524-60162517