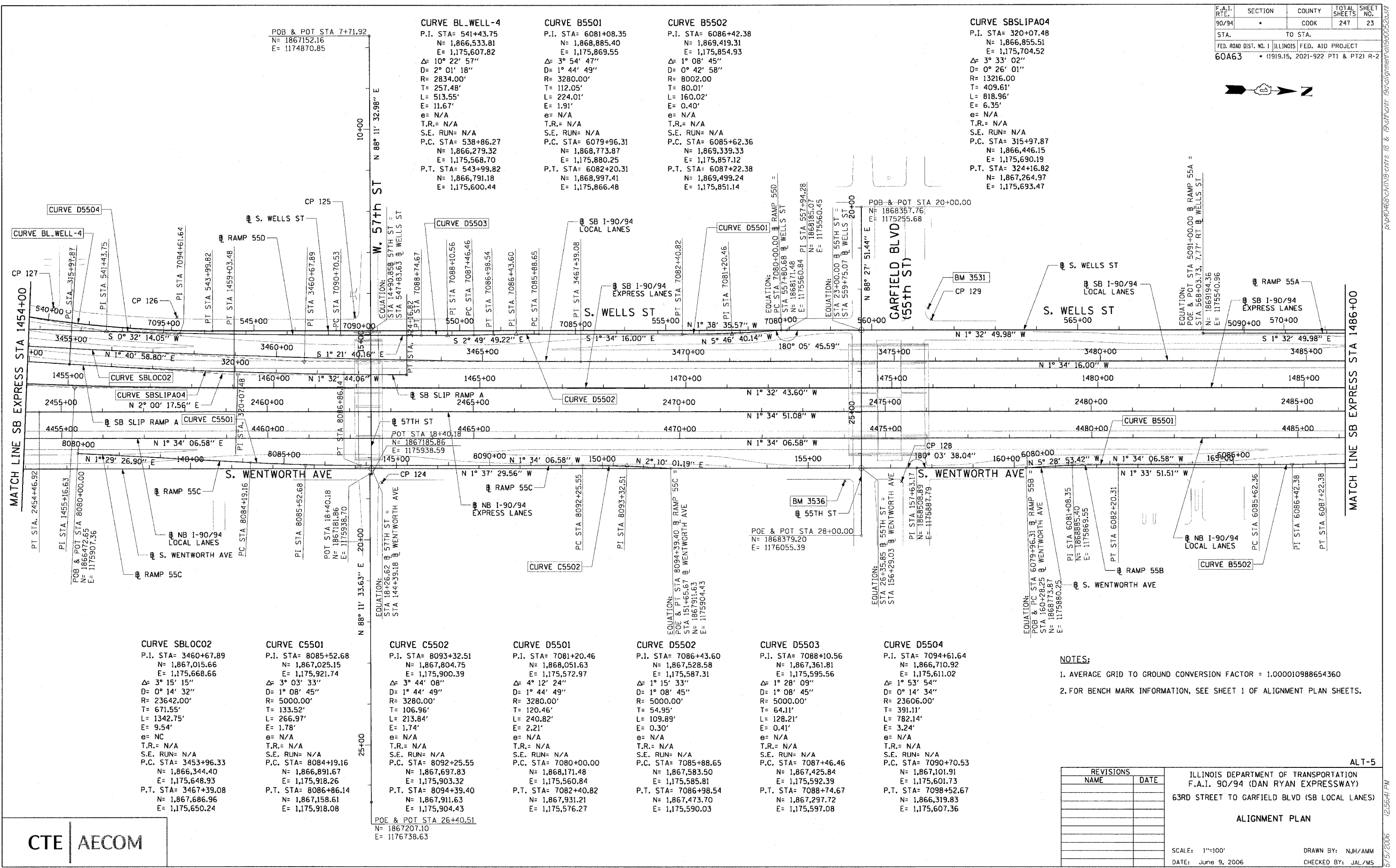
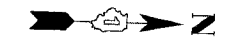


F.A.I. RTE.	SECTION	COUNTY	TOTAL SHEETS	SHEET NO.
90/94		COOK	247	23
STA. TO STA.		FED. ROAD DIST. NO. 1 ILLINOIS FED. AID PROJECT		
60A63		* (1919.15, 2021-922 PT1 & PT2) R-2		



CURVE BL_WELL-4
 P.I. STA= 541+43.75
 N= 1,866,533.81
 E= 1,175,607.82
 Δ = 10° 22' 57"
 D= 2° 01' 18"
 R= 2834.00'
 T= 257.48'
 L= 513.55'
 E= 11.67'
 e= N/A
 T.R.= N/A
 S.E. RUN= N/A
 P.C. STA= 538+86.27
 N= 1,866,279.32
 E= 1,175,568.70
 P.T. STA= 543+99.82
 N= 1,866,791.18
 E= 1,175,600.44

CURVE B5501
 P.I. STA= 6081+08.35
 N= 1,868,885.40
 E= 1,175,869.55
 Δ = 3° 54' 47"
 D= 1° 44' 49"
 R= 3280.00'
 T= 112.05'
 L= 224.01'
 E= 1.91'
 e= N/A
 T.R.= N/A
 S.E. RUN= N/A
 P.C. STA= 6079+96.31
 N= 1,868,773.87
 E= 1,175,880.25
 P.T. STA= 6082+20.31
 N= 1,868,997.41
 E= 1,175,866.48

CURVE B5502
 P.I. STA= 6086+42.38
 N= 1,869,419.31
 E= 1,175,854.93
 Δ = 1° 08' 45"
 D= 0° 42' 58"
 R= 8002.00'
 T= 80.01'
 L= 160.02'
 E= 0.40'
 e= N/A
 T.R.= N/A
 S.E. RUN= N/A
 P.C. STA= 6085+62.36
 N= 1,869,339.33
 E= 1,175,857.12
 P.T. STA= 6087+22.38
 N= 1,869,499.24
 E= 1,175,851.14

CURVE SBSLIPAO4
 P.I. STA= 320+07.48
 N= 1,866,855.51
 E= 1,175,704.52
 Δ = 3° 33' 02"
 D= 0° 26' 01"
 R= 13216.00'
 T= 409.61'
 L= 818.96'
 E= 6.35'
 e= N/A
 T.R.= N/A
 S.E. RUN= N/A
 P.C. STA= 315+97.87
 N= 1,866,446.15
 E= 1,175,690.19
 P.T. STA= 324+16.82
 N= 1,867,264.97
 E= 1,175,693.47

CURVE SBLOC02
 P.I. STA= 3460+67.89
 N= 1,867,015.66
 E= 1,175,668.66
 Δ = 3° 15' 15"
 D= 0° 14' 32"
 R= 23642.00'
 T= 671.55'
 L= 1342.75'
 E= 9.54'
 e= NC
 T.R.= N/A
 S.E. RUN= N/A
 P.C. STA= 3453+96.33
 N= 1,866,344.40
 E= 1,175,648.93
 P.T. STA= 3467+39.88
 N= 1,867,686.96
 E= 1,175,650.24

CURVE C5501
 P.I. STA= 8085+52.68
 N= 1,867,025.15
 E= 1,175,921.74
 Δ = 3° 03' 33"
 D= 1° 08' 45"
 R= 5000.00'
 T= 106.96'
 L= 266.97'
 E= 1.78'
 e= N/A
 T.R.= N/A
 S.E. RUN= N/A
 P.C. STA= 8084+19.16
 N= 1,866,891.67
 E= 1,175,918.26
 P.T. STA= 8086+86.14
 N= 1,867,158.61
 E= 1,175,918.08

CURVE C5502
 P.I. STA= 8093+32.51
 N= 1,867,804.75
 E= 1,175,900.39
 Δ = 3° 44' 08"
 D= 1° 44' 49"
 R= 3280.00'
 T= 106.96'
 L= 213.84'
 E= 1.74'
 e= N/A
 T.R.= N/A
 S.E. RUN= N/A
 P.C. STA= 8092+25.55
 N= 1,867,697.83
 E= 1,175,903.32
 P.T. STA= 8094+39.40
 N= 1,867,911.63
 E= 1,175,904.43

CURVE D5501
 P.I. STA= 7081+20.46
 N= 1,868,051.63
 E= 1,175,572.97
 Δ = 4° 12' 24"
 D= 1° 44' 49"
 R= 3280.00'
 T= 120.46'
 L= 240.82'
 E= 2.21'
 e= N/A
 T.R.= N/A
 S.E. RUN= N/A
 P.C. STA= 7080+00.00
 N= 1,868,171.48
 E= 1,175,560.84
 P.T. STA= 7082+40.82
 N= 1,867,931.21
 E= 1,175,576.27

CURVE D5502
 P.I. STA= 7086+43.60
 N= 1,867,528.50
 E= 1,175,587.31
 Δ = 1° 15' 33"
 D= 1° 08' 45"
 R= 5000.00'
 T= 54.95'
 L= 109.89'
 E= 0.30'
 e= N/A
 T.R.= N/A
 S.E. RUN= N/A
 P.C. STA= 7085+583.50
 N= 1,867,425.84
 E= 1,175,585.81
 P.T. STA= 7086+74.67
 N= 1,867,473.70
 E= 1,175,590.03

CURVE D5503
 P.I. STA= 7088+10.56
 N= 1,867,361.81
 E= 1,175,595.56
 Δ = 1° 28' 09"
 D= 1° 08' 45"
 R= 5000.00'
 T= 64.11'
 L= 128.21'
 E= 0.41'
 e= N/A
 T.R.= N/A
 S.E. RUN= N/A
 P.C. STA= 7087+46.46
 N= 1,867,425.84
 E= 1,175,592.39
 P.T. STA= 7088+74.67
 N= 1,867,297.72
 E= 1,175,597.08

CURVE D5504
 P.I. STA= 7094+61.64
 N= 1,866,710.92
 E= 1,175,611.02
 Δ = 1° 53' 54"
 D= 0° 14' 34"
 R= 23606.00'
 T= 391.11'
 L= 782.14'
 E= 3.24'
 e= N/A
 T.R.= N/A
 S.E. RUN= N/A
 P.C. STA= 7090+70.53
 N= 1,867,101.91
 E= 1,175,601.73
 P.T. STA= 7098+52.67
 N= 1,866,319.83
 E= 1,175,607.36

- NOTES:**
- AVERAGE GRID TO GROUND CONVERSION FACTOR = 1.000010988654360
 - FOR BENCH MARK INFORMATION, SEE SHEET 1 OF ALIGNMENT PLAN SHEETS.

REVISIONS	
NAME	DATE

ILLINOIS DEPARTMENT OF TRANSPORTATION
 F.A.I. 90/94 (DAN RYAN EXPRESSWAY)
 63RD STREET TO GARFIELD BLVD (SB LOCAL LANES)

ALIGNMENT PLAN

SCALE: 1"=100'
 DATE: June 9, 2006
 DRAWN BY: NJH/AMM
 CHECKED BY: JAL/MS



ALT-5

6/5/2006 12:56:41 PM