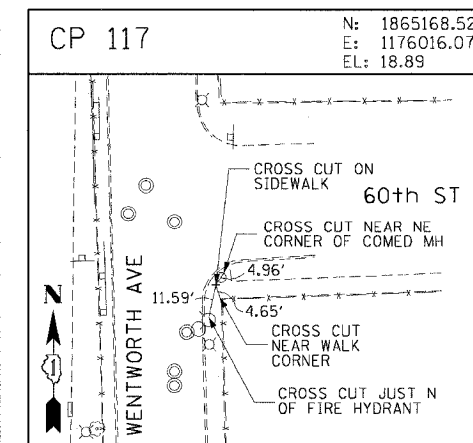
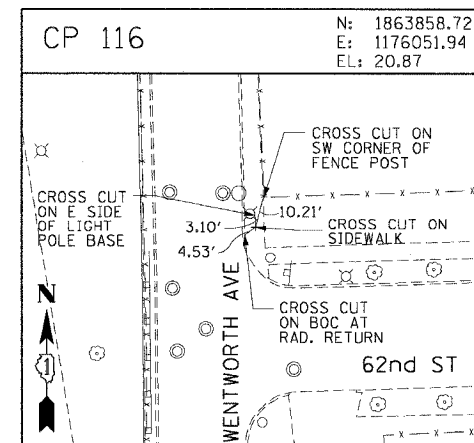
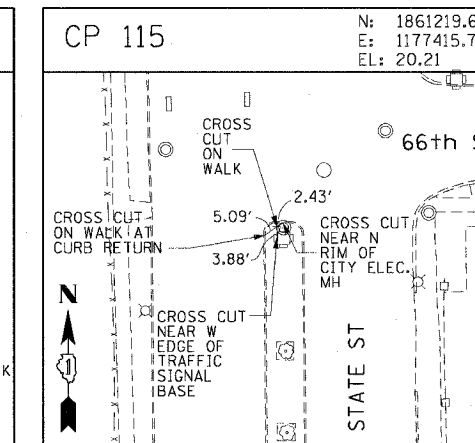
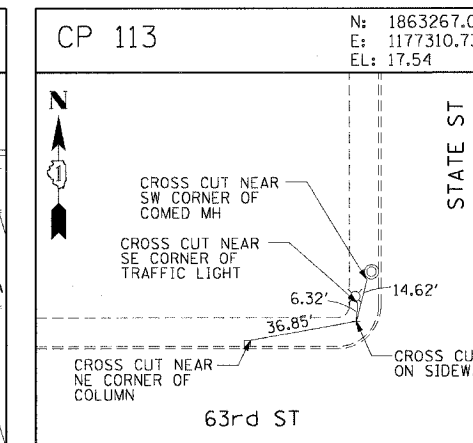
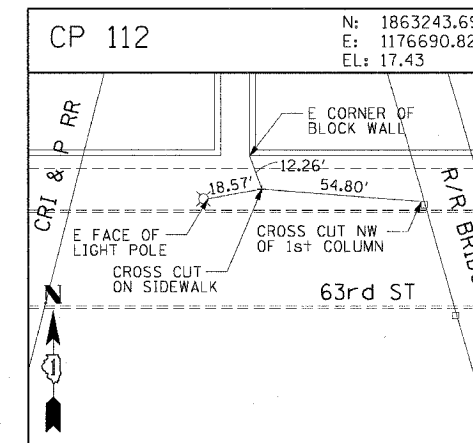
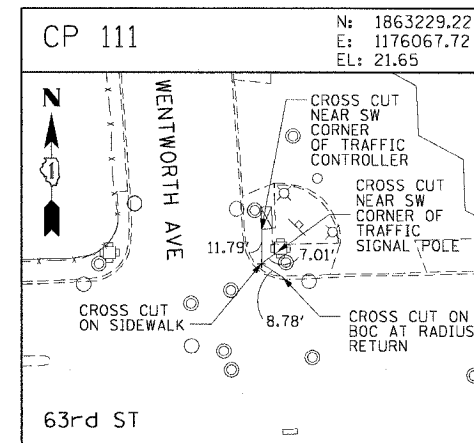
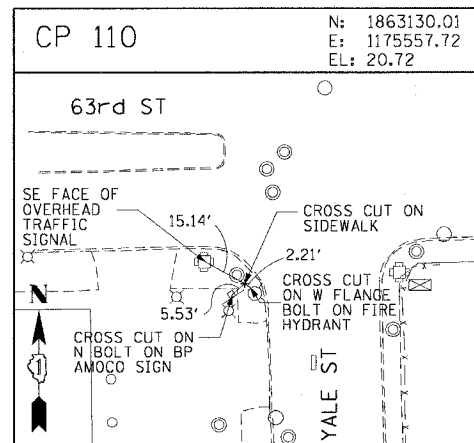
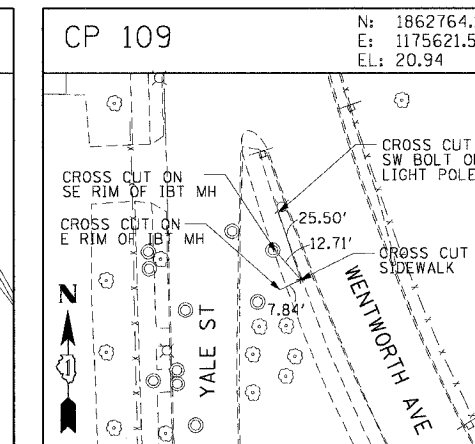
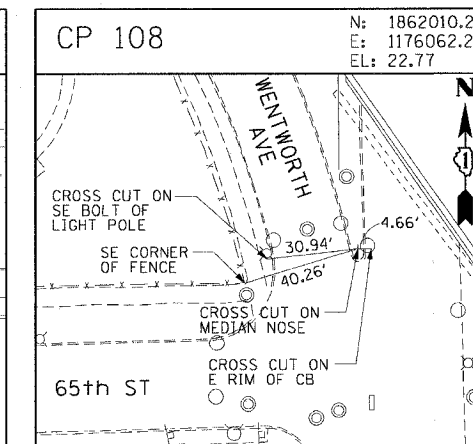
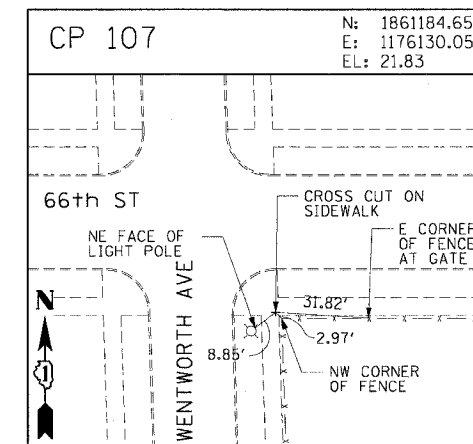
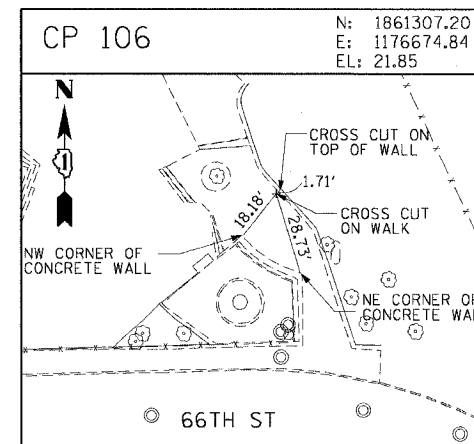
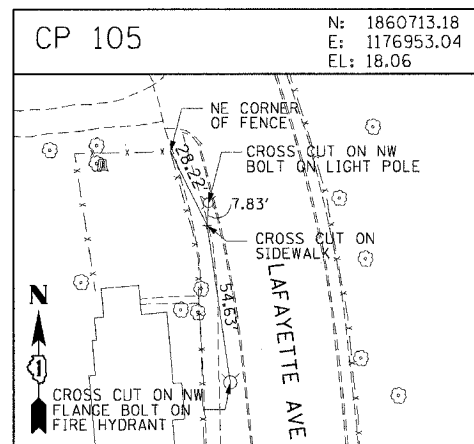
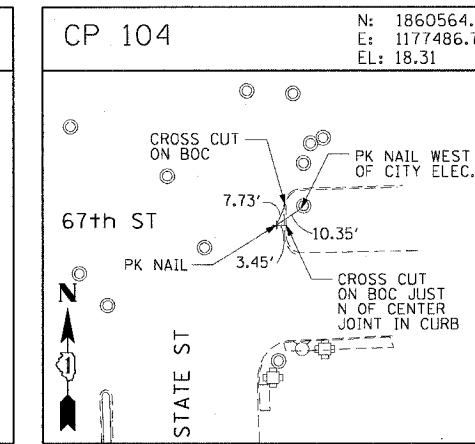
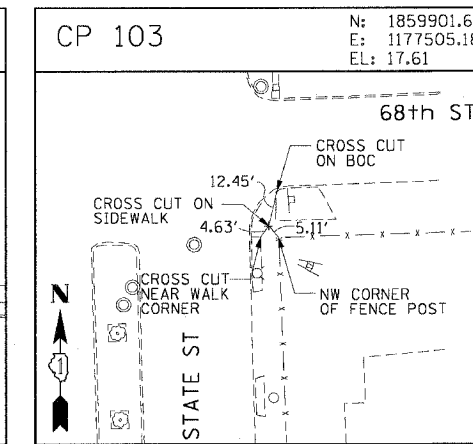
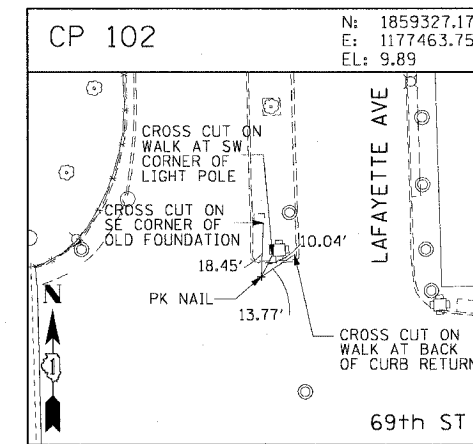
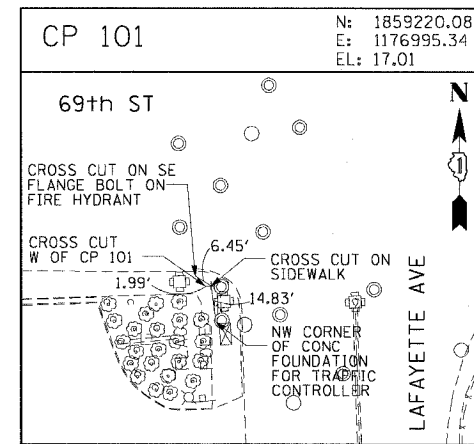
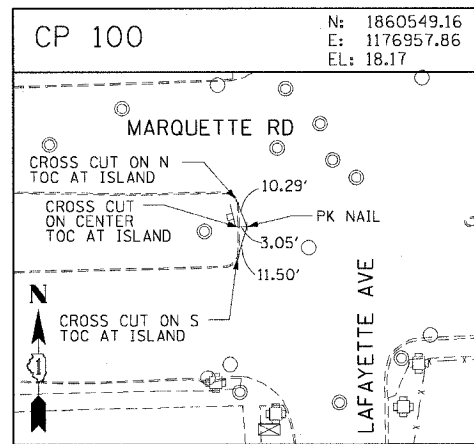


F.A.I. RTE.	SECTION	COUNTY	TOTAL SHEETS	SHEET NO.
90/94	•	COOK	247	26
STA. TO STA.				
FED. ROAD DIST. NO. 1 ILLINOIS FED. AID PROJECT				
60A63 • (0919.15, 2021-922 PT1 & PT2) R-2				



REVISIONS	
NAME	DATE

ALT-8  
ILLINOIS DEPARTMENT OF TRANSPORTATION  
F.A.I. 90/94 (DAN RYAN EXPRESSWAY)  
63RD STREET TO GARFIELD BLVD (SB LOCAL LANES)  
**SURVEY TIES AND CONTROL POINTS**  
SCALE: 1"=30'  
DATE: June 9, 2006  
DRAWN BY: MRK  
CHECKED BY: JAL

CTE | AECOM

6/5/2006 12:56:47 PM