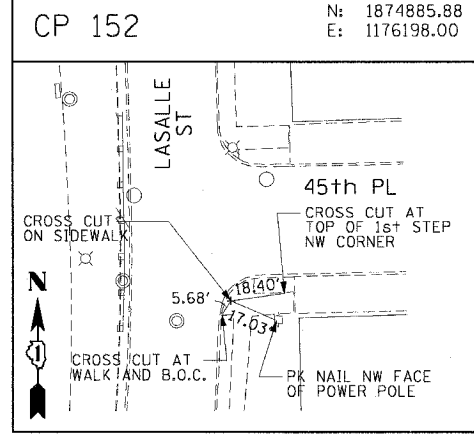
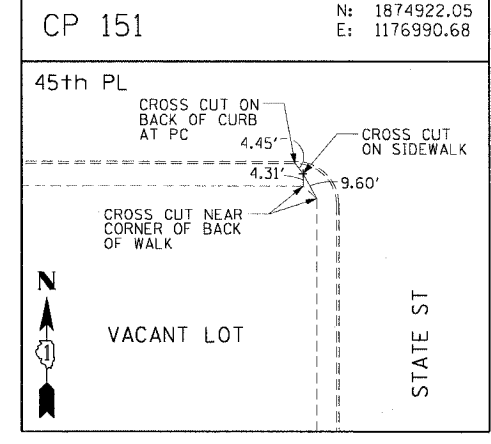
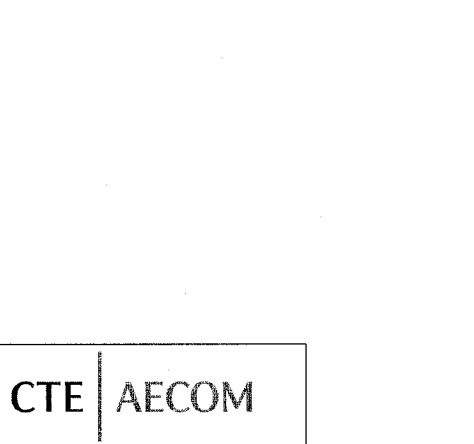
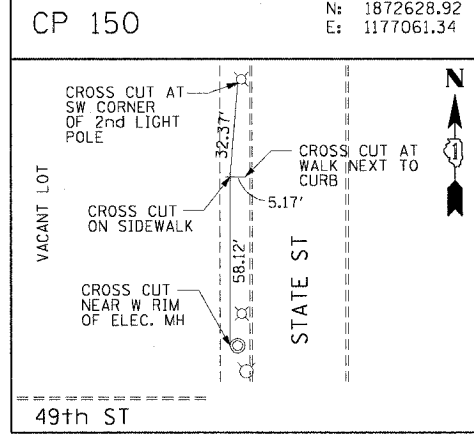
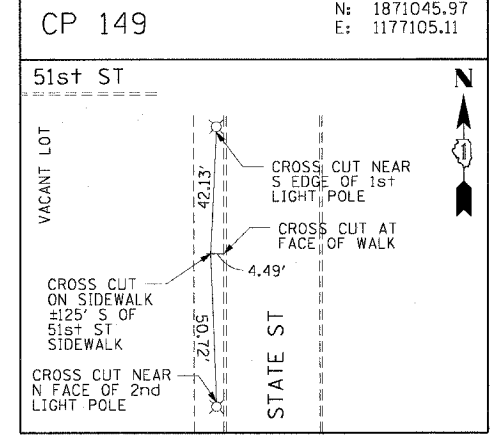
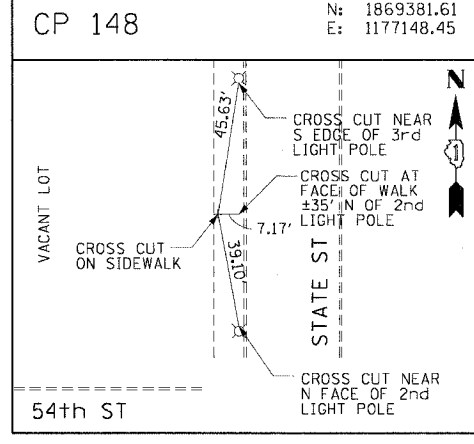
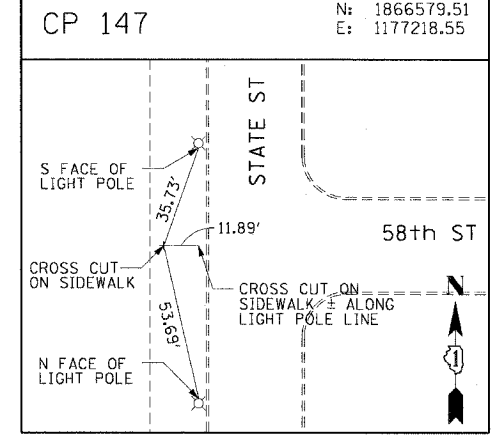
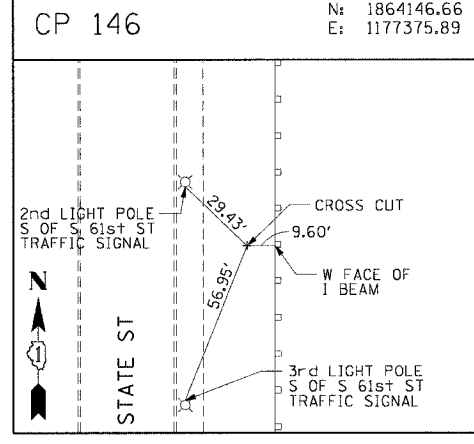
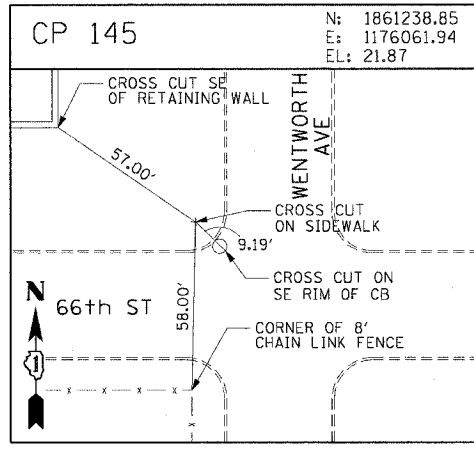
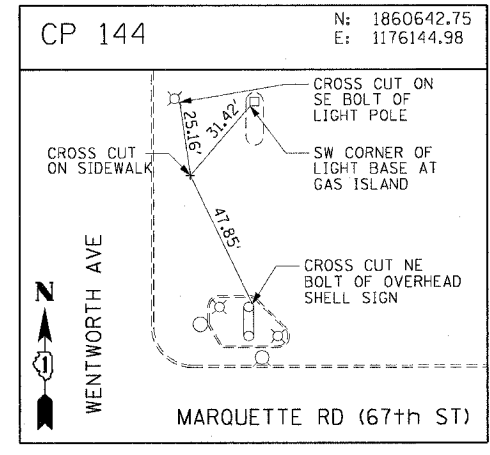
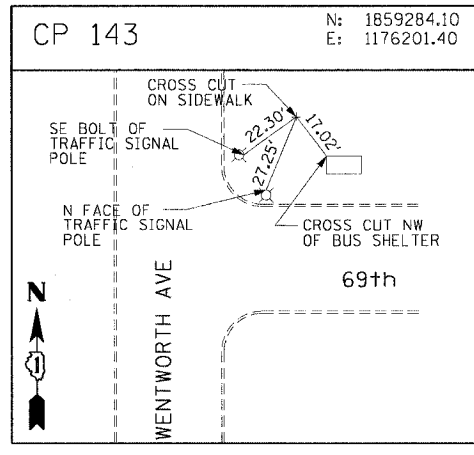
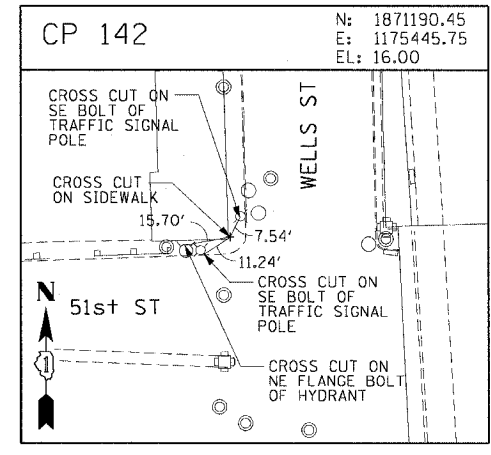
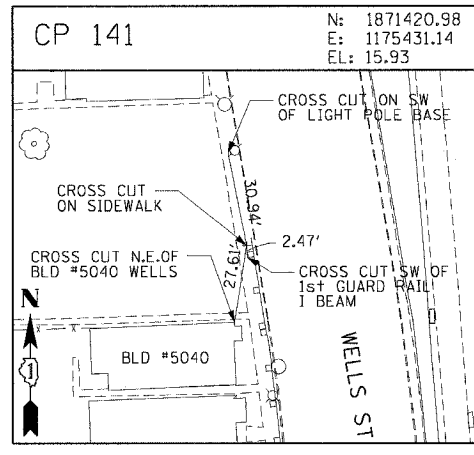
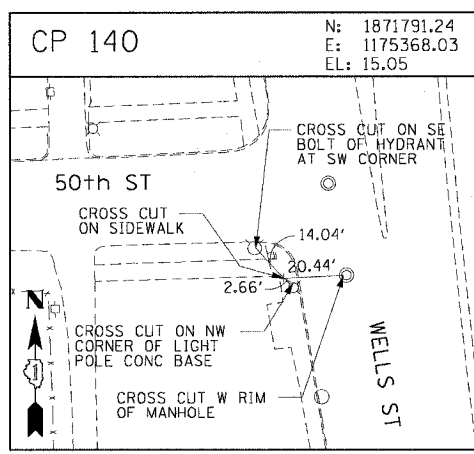
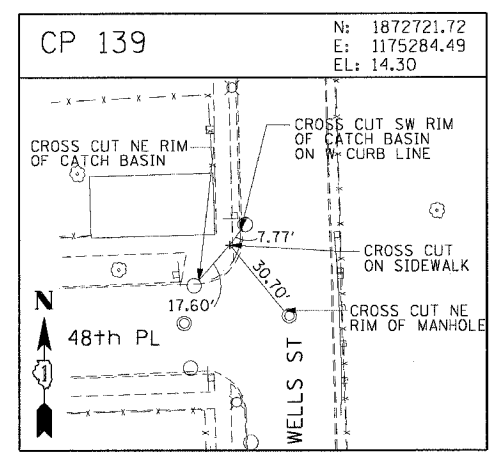
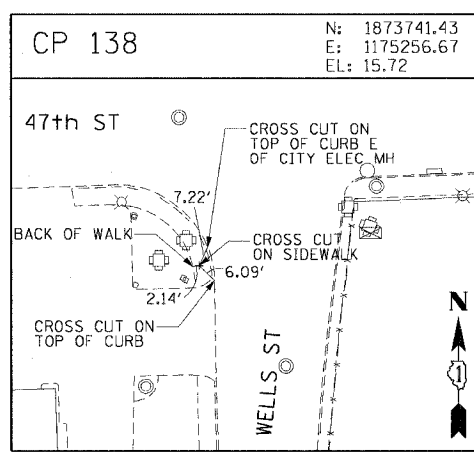
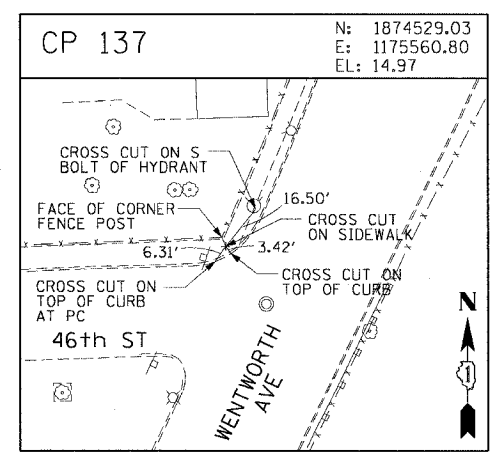
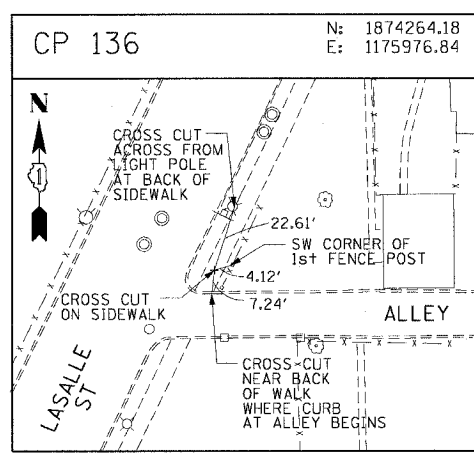


F.A.I. RTE.	SECTION	COUNTY	TOTAL SHEETS	SHEET NO.
90/94	*	COOK	247	28
STA.		TO STA.		
FED. ROAD DIST. NO. 1		ILLINOIS FED. AID PROJECT		
60A63		• (1919.15, 2021-922 PT1 & PT2) R-2		



CTE | AECOM

REVISIONS	
NAME	DATE

ALT-10  
ILLINOIS DEPARTMENT OF TRANSPORTATION  
F.A.I. 90/94 (DAN RYAN EXPRESSWAY)  
63RD STREET TO GARFIELD BLVD (SB LOCAL LANES)  
SURVEY TIES AND CONTROL POINTS  
SCALE: 1"=30'  
DATE: June 9, 2006  
DRAWN BY: MRK  
CHECKED BY: JAL

P:\40468\CH\14\14-ctrls\_18 & 19.dwg (1/19/2006) 12:56:53 PM