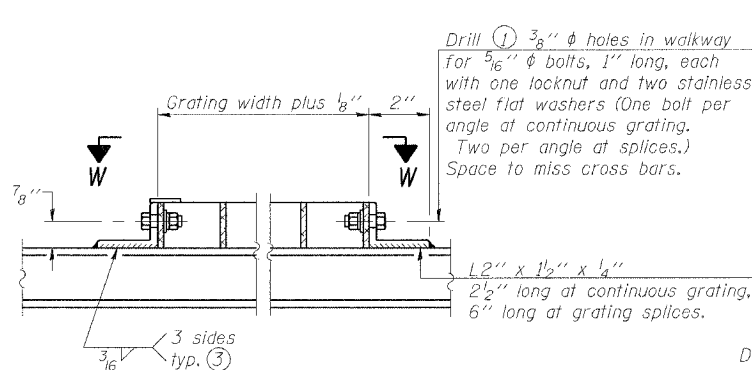
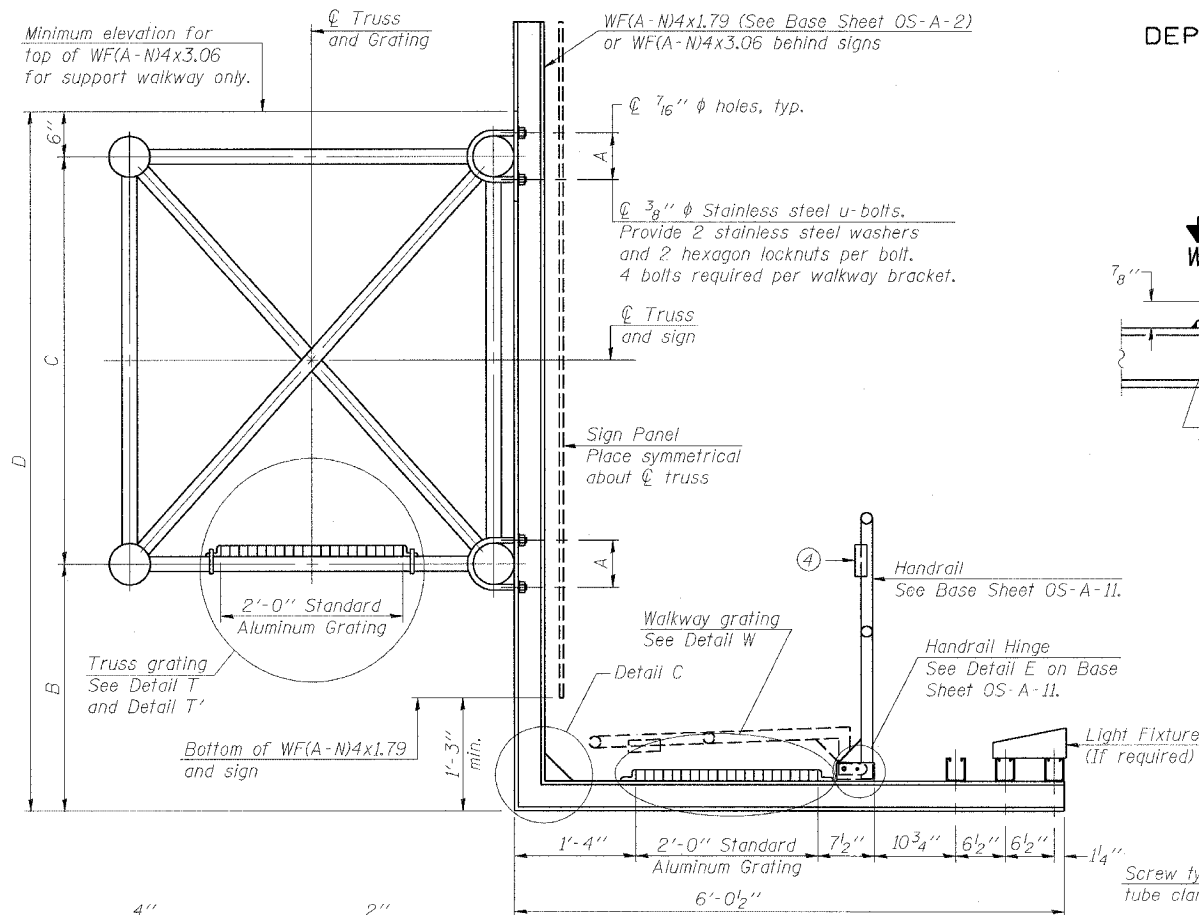
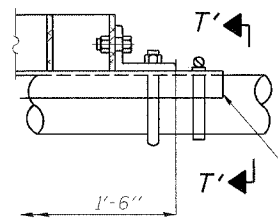


STATE OF ILLINOIS
DEPARTMENT OF TRANSPORTATION

ROUTE NO.	SECTION	COUNTY	SHEET NO.	SHEET
F.A.I. RTE. 90/94		COOK	247	110
FED. ROAD DIST. NO. 1	ILLINOIS	FED. AID PROJECT-		
(1919.15 & 2021-922 PT.1) R-2 60463				

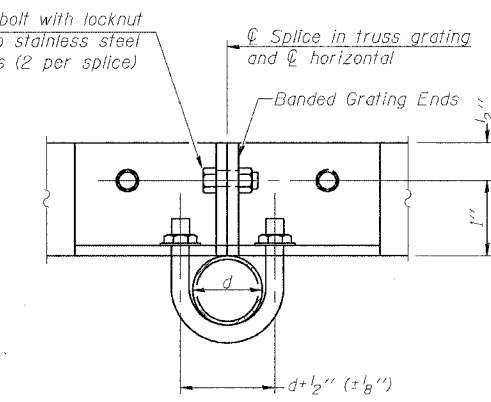


DETAIL W
(Walkway grating)

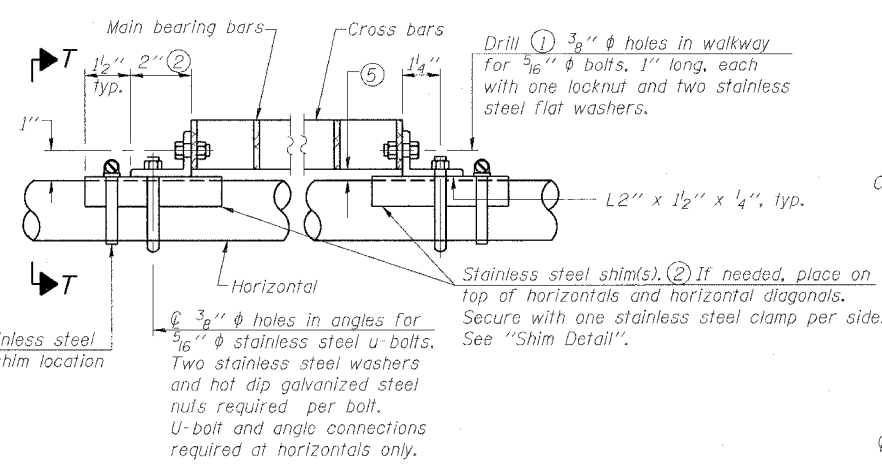


DETAIL T'

(Truss grating splice)
Details not shown same as Detail T.
Alternate materials may be used subject to the Engineer's review and approval.

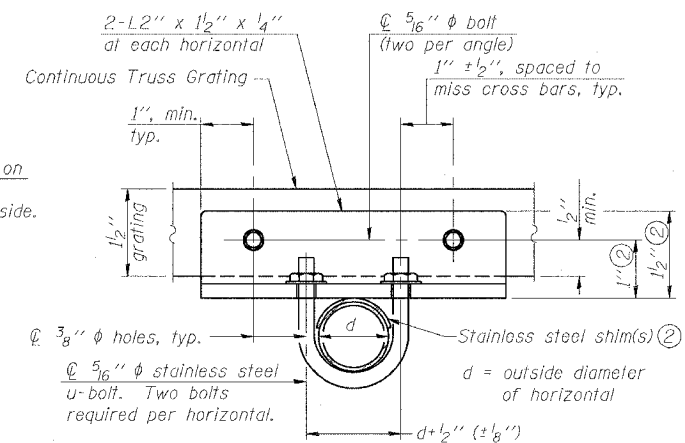


SECTION T'-T'



DETAIL T

(Continuous Truss grating)



SECTION T-T

- Drilling holes in grating may be done in shop or field, based on Contractor's preference and subject to accurate alignment.
- Stainless steel shims shall be placed as shown in Detail T if needed to compensate for alignment variations between horizontal and diagonal pipes beyond adjustment provided by angles. Thicker shims may be used subject to shims performing properly.
- If Handrail Joint present, weld angle to WF(A-N)4 and 1/4" extension bars. (See Base Sheet OS-A-II.)
- 1/8" x 1/2" x 2" welded to handrail posts to protect locations that contact grating.
- Tube to grating gap may vary from 0 to 1/2", max. to align walkway, allow for camber, etc.

SPECIFICATIONS FOR STANDARD ALUMINUM GRATING

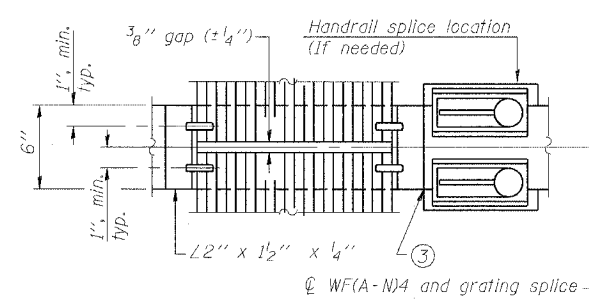
Main Bearing Bars shall be 3/16" x 1 1/2" on 1 3/16" centers and conform to ASTM B221 Alloy 6061-T6.
Cross bars shall be 3/16" x 1 1/2" on 4" centers and conform to ASTM B221 Alloy 6063-T5 or 6061-T6.

OR

Aluminum Grating with modified "I" sections for main bearing bars shall meet the following requirements:
Main bars shall conform to ASTM B221 Alloy 6061-T6 and have a minimum section modulus equal to 0.0705 in.³ per bar, a depth of 1 1/2", spaced on 1 3/16" centers.
Cross bars shall conform to ASTM B221 Alloy 6063-T5 or T-42 and spaced on 4" centers.

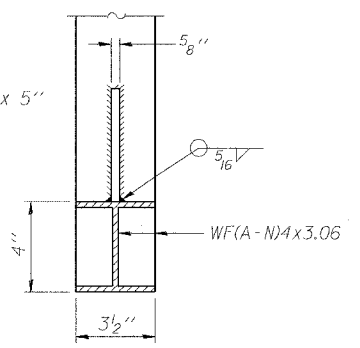
Structure Number	Station	A	B	C	D
ISO161094R058.3	3444+50	5 1/2"	5'-3"	4'-6"	10'-3"
ISO161094R058.1	3453+00	5 1/2"	5'-3"	4'-6"	10'-3"

SECTION B-B

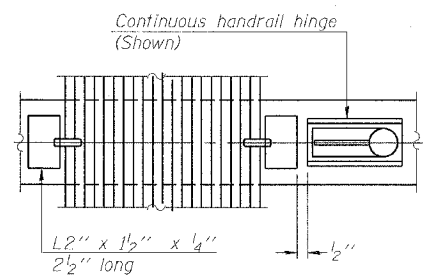


(AT WALKWAY GRATING SPLICE)

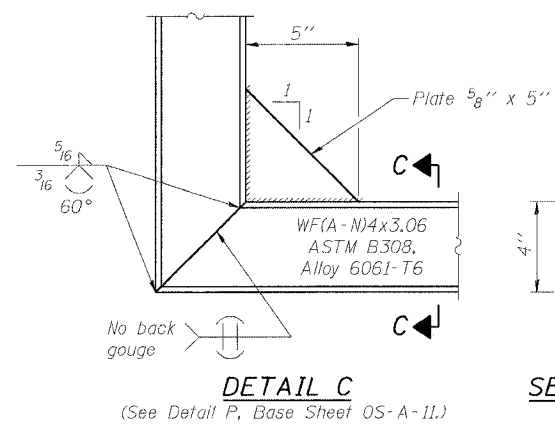
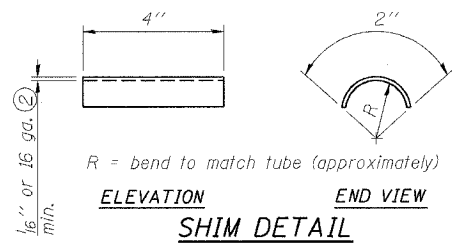
SECTION C-C



SECTION W-W



(CONTINUOUS WALKWAY GRATING)



DESIGNED - JSS	EXAMINED
CHECKED - MJP	PASSED
DRAWN - JSS	
CHECKED - MJP	

20	ENGINEER OF STRUCTURAL SERVICES
	ENGINEER OF BRIDGES AND STRUCTURES

NUMBER	REVISION	DATE

OSS-12

**OVERHEAD SIGN STRUCTURES
ALUMINUM WALKWAY DETAILS**

F.A.I. 90/94 (DAN RYAN EXPRESSWAY)
63RD STREET TO GARFIELD BLVD (SB LOCAL LANES)
PROPOSED IMPROVEMENT

6/2/2006 11:24:32 AM P:\40468\CHIN\B-cmrs 15 & 19\STRUCT\19A\Sign\OS-A10\2EA.dgn