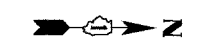
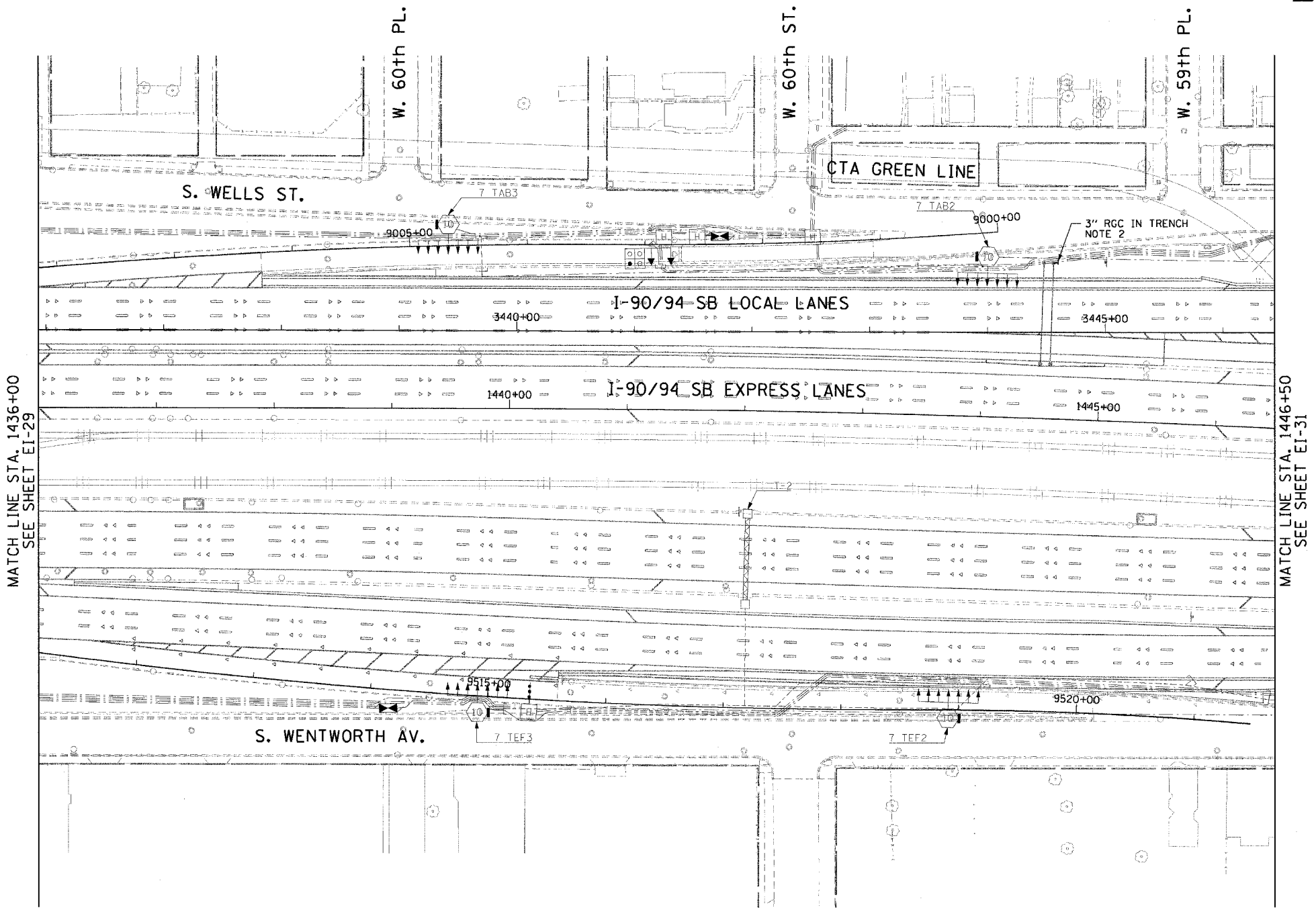


F.A.I. RTE:	SECTION	COUNTY	TOTAL SHEETS	SHEET NO.
90/94	*	COOK	247	135
STA. 1436+00.00 TO STA. 1446+50.00				
FED. ROAD DIST. NO. 1 ILLINOIS FED. AID PROJECT				
60A63 • (1919.15, 2021-922 PT1 & PT2) R-2				



NOTES:

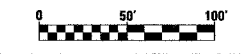
1. SEE DRAWINGS EI-100 AND EI-101 FOR ELECTRICAL SYMBOLS AND ABBREVIATIONS.
2. EXTEND CONDUIT STUB-OUT 2' BEYOND THE SIGN STRUCTURE FOUNDATION. CAP FOR FUTURE USE.
3. UNLESS NOTED OTHERWISE, ALL ITEMS AND WORK SHOWN IN HEAVY LINE WEIGHT ON THIS DRAWING ARE PROPOSED NEW ITEMS AND WORK.



MATCH LINE STA. 1436+00
SEE SHEET EI-29

MATCH LINE STA. 1446+50
SEE SHEET EI-31

CTE | AECOM



EI-30

REVISIONS	
NAME	DATE

ILLINOIS DEPARTMENT OF TRANSPORTATION
F.A.I. 90/94 (DAN RYAN EXPRESSWAY)
63RD STREET TO GARFIELD BLVD (SB LOCAL LANES)
ELECTRICAL INFRASTRUCTURE PLAN

SCALE: 1"=50'
DATE: June 9, 2006

DRAWN BY: HAR
CHECKED BY: JPC

03/02/2006 03:03:37 PM