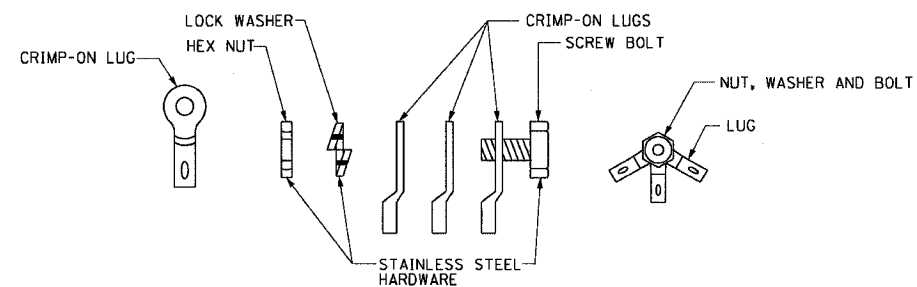
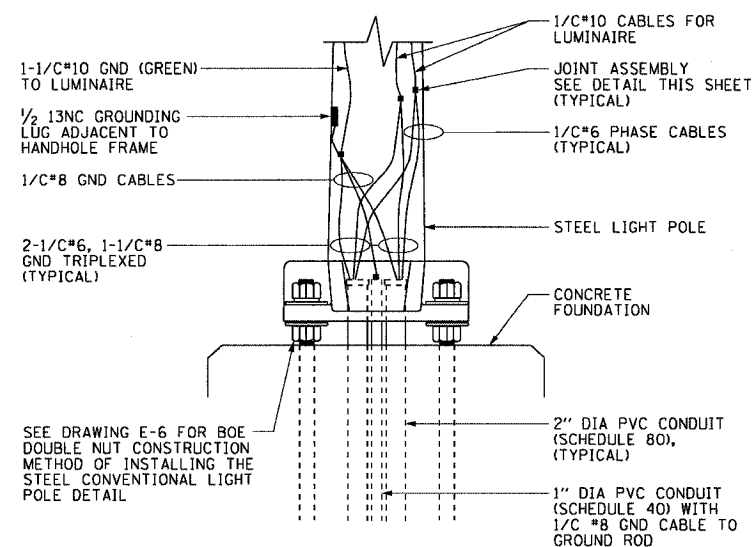


| | | | | |
|-------------------------------------------------|-----------|--------|--------------|-----------|
| F.A.I. RTE. | SECTION | COUNTY | TOTAL SHEETS | SHEET NO. |
| 90/94 | • | COOK | 247 | 152 |
| STA. - | TO STA. - | | | |
| FED. ROAD DIST. NO. 1 ILLINOIS FED. AID PROJECT | | | | |
| 60A63 • (1919.15, 2021-922 PT1 & PT2) R-2 | | | | |



JOINT ASSEMBLY DETAILS
NOT TO SCALE



WALL MOUNTED POLE BASE WIRING DETAIL
NOT TO SCALE

NOTES:

1. SEE DRAWINGS E-1 AND E-2 FOR CDOT ELECTRICAL GENERAL NOTES, SYMBOLS AND ABBREVIATIONS.
2. SEE PLAN DRAWING E-3 FOR THE PROPOSED CONDUIT ROUTING.

E-5

| REVISIONS | |
|-----------|------|
| NAME | DATE |
| | |
| | |
| | |
| | |
| | |
| | |
| | |
| | |
| | |
| | |

ILLINOIS DEPARTMENT OF TRANSPORTATION
F.A.I. 90/94 (DAN RYAN EXPRESSWAY)
63RD STREET TO GARFIELD BLVD (SB LOCAL LANES)

MISCELLANEOUS ELECTRICAL DETAILS

SCALE: AS SHOWN
DATE: June 9, 2006

DRAWN BY: HAR
CHECKED BY: JPC



06/02/2006 03:03:29 PM