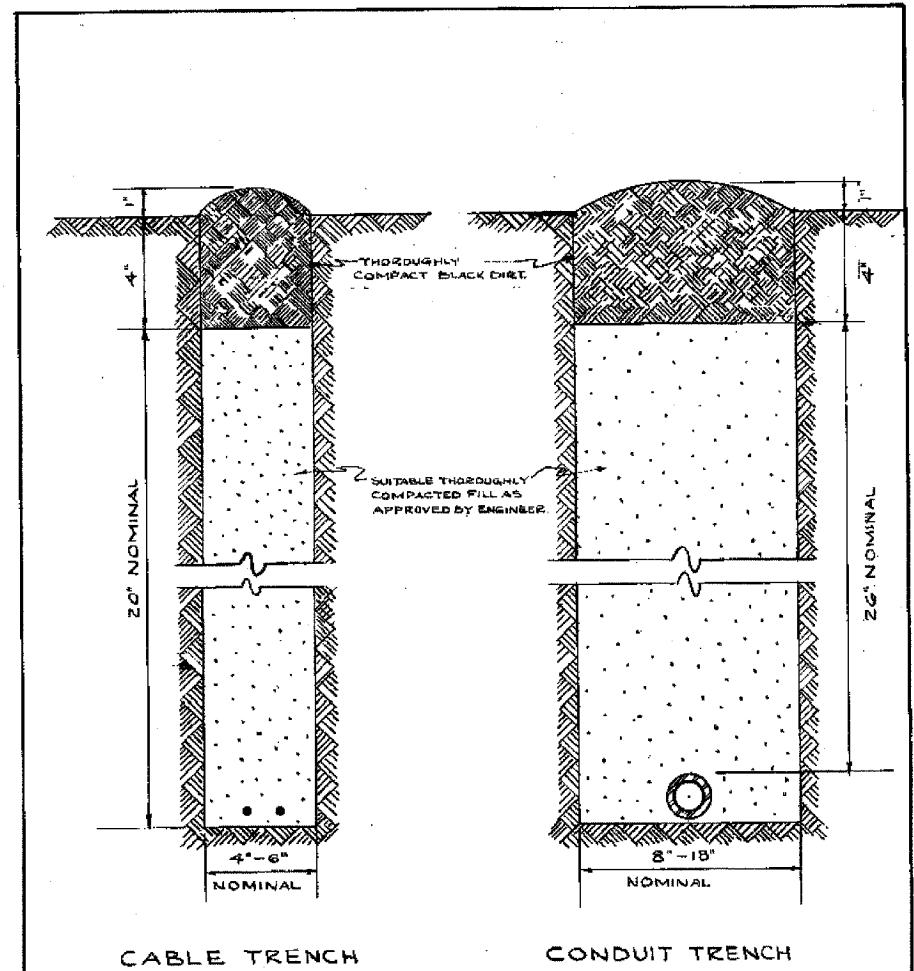


F.A.I. RTE.	SECTION	COUNTY	TOTAL SHEETS	SHEET NO.
90/94		COOK	247	160
STA.	TO STA.			
FED. ROAD DIST. NO. 1	ILLINOIS FED. AID PROJECT			
60A63	(1919.15, 2021-922 PT1 & PT2) R-2			

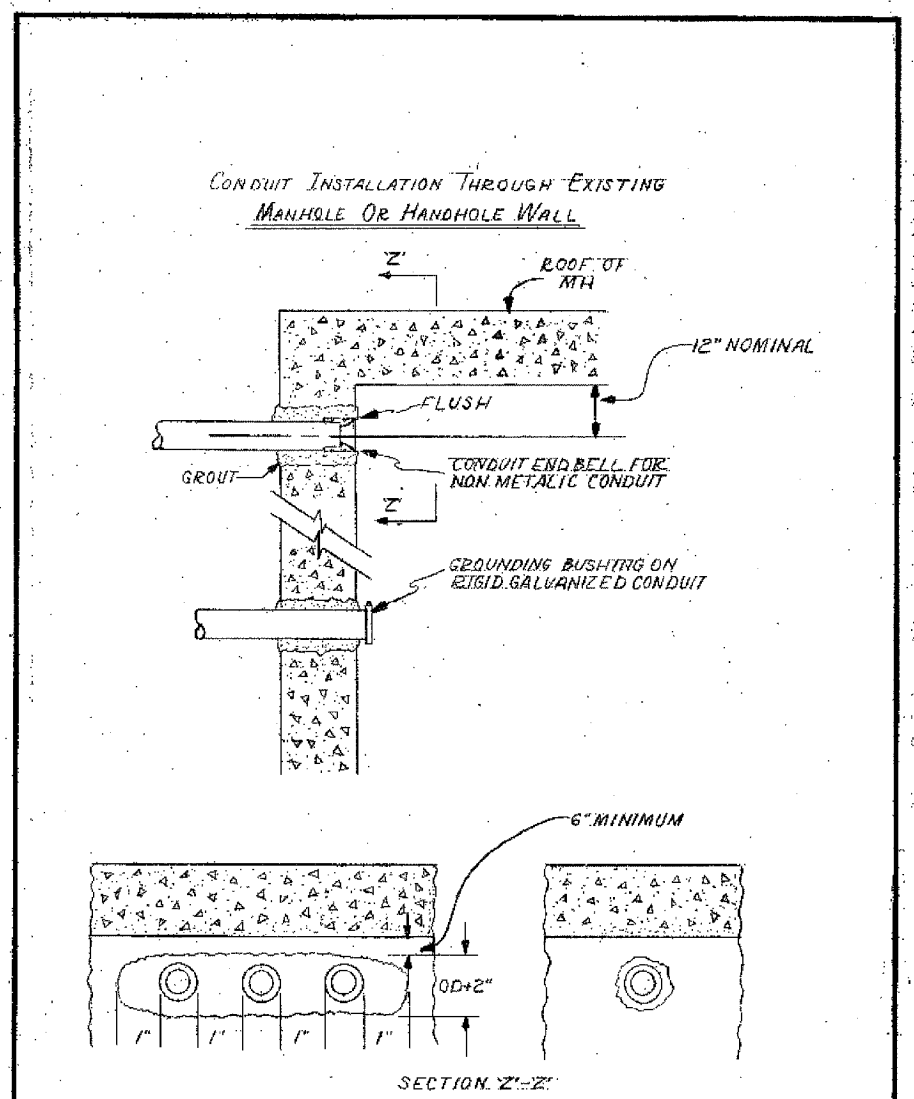


CABLE TRENCH

CONDUIT TRENCH

NOTE
 EXCESS SOIL FROM TRENCH TO BE COMPLETELY REMOVED FROM SITE AS SOON AS PRACTICABLE.
 BLACK DIRT TO BE TAMPED & THOROUGHLY COMPACTED AS SHOWN.

CITY OF CHICAGO			
DEPT. OF STREETS & SANITATION			
DIVISION OF ELECTRICAL ENGINEERING			
REVISION	DRAWN	CHECKED	ENGINEER
A	W. E. HAEP	M. J. HANE	J. O'CONNOR
B			
C			
D			
E			
F			
G			
H			
SIZE: 8 1/2" x 11"		SCALE: 1/4"	DATE: 7-14-01



OPENING THROUGH WALL TO BE KEPT TO MINIMUM SIZE TO ADMIT CONDUIT AND SUFFICIENT GROUT TO ASSURE SEALING WALL.

INSTALLATION METHOD OF INSTALLING CONDUIT THRU MANHOLE WALL		
CITY OF CHICAGO		
DEPT. OF STREETS AND SANITATION		
BUREAU OF ELECTRICITY		
DIVISION OF ELECTRICAL ENGINEERING		
DRAWN	CHECKED	ENGINEER
A.M. JOHNSON	R. SIEKOWSKI	R.L. MARTIN
		814
SIZE: 8 1/2" x 11"	DATE: 7-14-01	

NOTES:
 1. THIS IS A STANDARD DRAWING MADE BY THE CITY OF CHICAGO, DEPARTMENT OF STREETS AND SANITATION, BUREAU OF ELECTRICITY. THIS DRAWING IS INCLUDED FOR THE CONVENIENCE OF THE CONTRACTOR.

REVISIONS	NAME	DATE

ILLINOIS DEPARTMENT OF TRANSPORTATION
 F.A.I. 90/94 (DAN RYAN EXPRESSWAY)
 63RD STREET TO GARFIELD BLVD (SB LOCAL LANES)
 STANDARD BOE DETAILS
 SCALE: NOT TO SCALE
 DATE: June 9, 2006
 DRAWN BY: HAR
 CHECKED BY: JPC

06/02/2006 03:02 PM
 P:\90-94\elec\NB-cvirs 18 & 19\contract\90\94\elec\900132.dwg