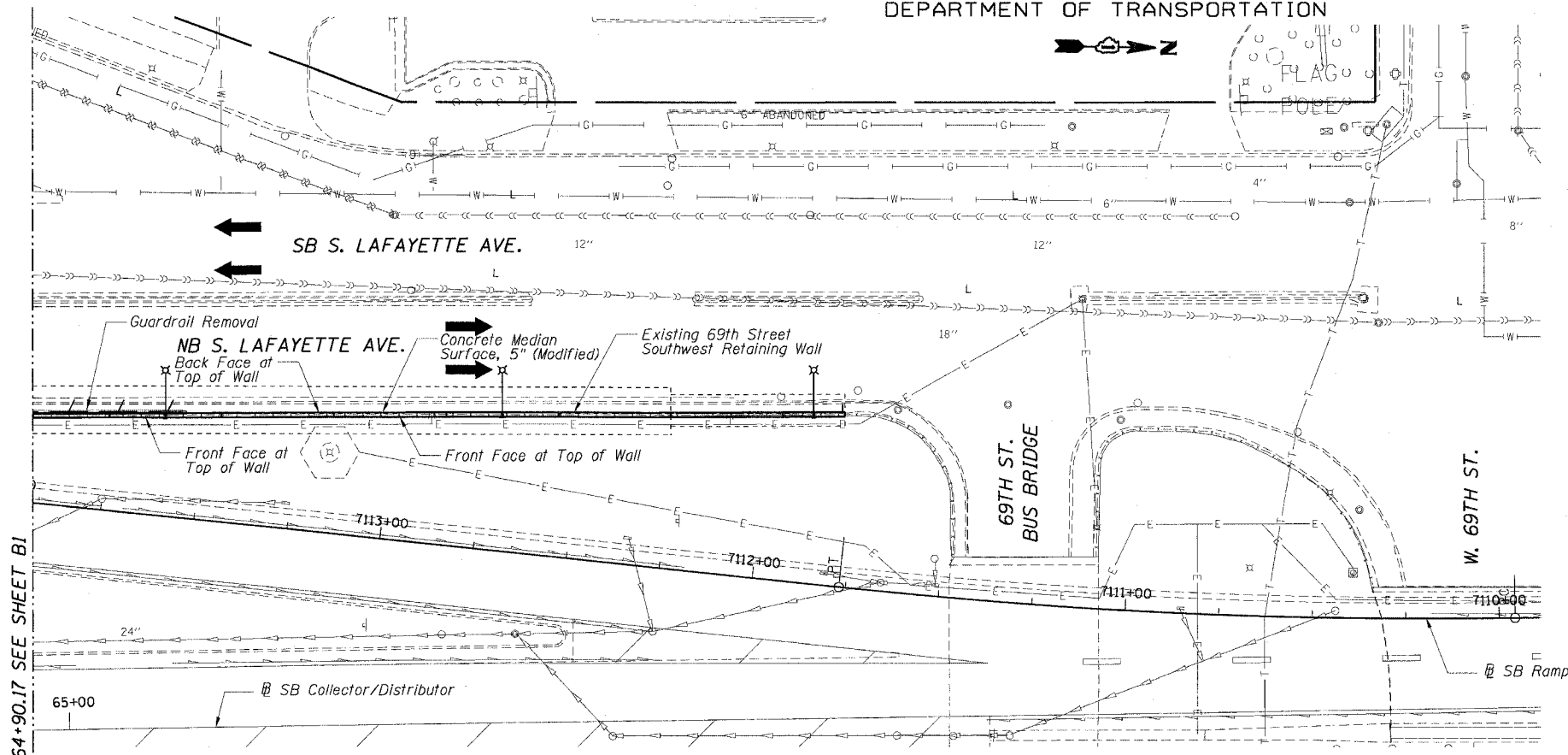
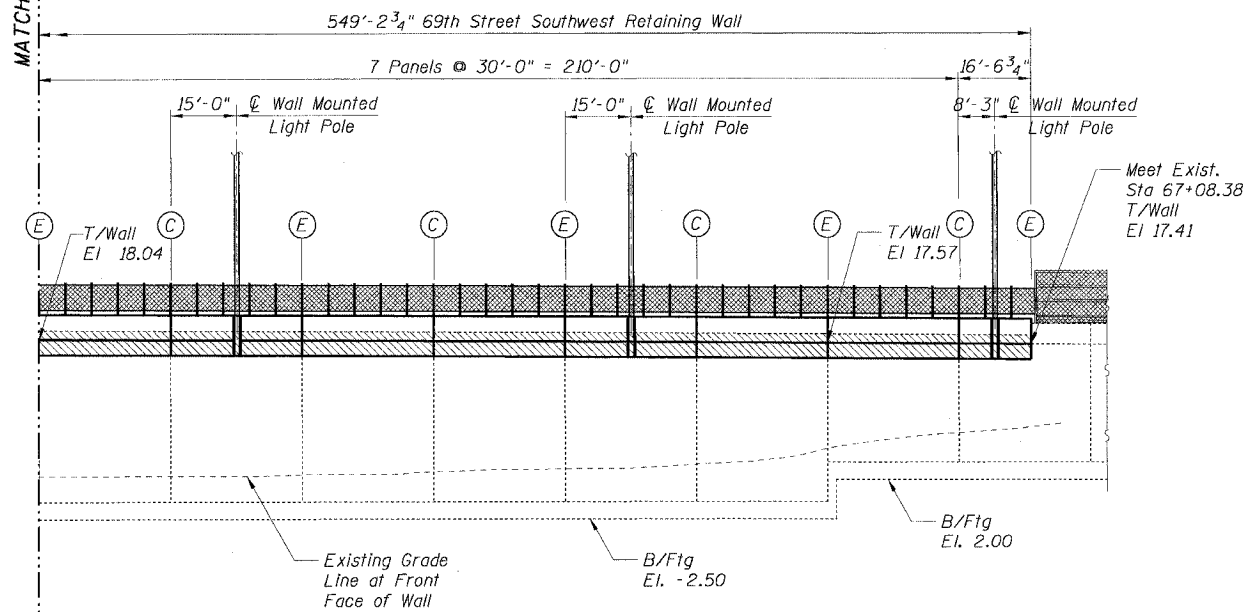


STATE OF ILLINOIS  
DEPARTMENT OF TRANSPORTATION

F.A.I. RTE.	SECTION	COUNTY	TOTAL SHEETS	SHEET NO.
90/94	*	COOK	247	182
STA.		TO STA.		
60A63		1919.15, 2021-922 PT1 & PT2 R-2		



PLAN



FRONT FACE ELEVATION

(Looking West)

NOTES:

1. For General Notes, Index of Sheets, Legend and Abbreviations, see Sheet B1.
2. For Total Bill of Materials, see Sheet B1.
3. For Detailed Elevation, see Sheets B3 and B4.
4. For Typical Sections and Details, see Sheet B5.
5. For Chain Link Fence 42", Attached to Structure (Special) details, see Sheet B6.
6. For Wall Mounted Light Pole Foundation details, see Sheet B4.
7. Rustication Finish not shown for clarity.

REVISIONS	
NAME	DATE

Sheet B2 of 7  
ILLINOIS DEPARTMENT OF TRANSPORTATION  
F.A.I. 90/94 (DAN RYAN EXPRESSWAY)  
63RD STREET TO GARFIELD BLVD (SB LOCAL LANES)  
GENERAL PLAN II  
69TH STREET SOUTHWEST RETAINING WALL  
SECTION (1818, ETC. 2324.6-1P) R-II  
STATION 61+65.38 TO 67+08.38  
COOK COUNTY  
SCALE: NONE DRAWN BY: CHD  
DATE: June 9, 2006 CHECKED BY: MJP

6/22/2006 10:54:30 AM P:\P40468\STUDIOS\8-CRIT\89-CRIT\9A\SRV\79A012A016-W230P