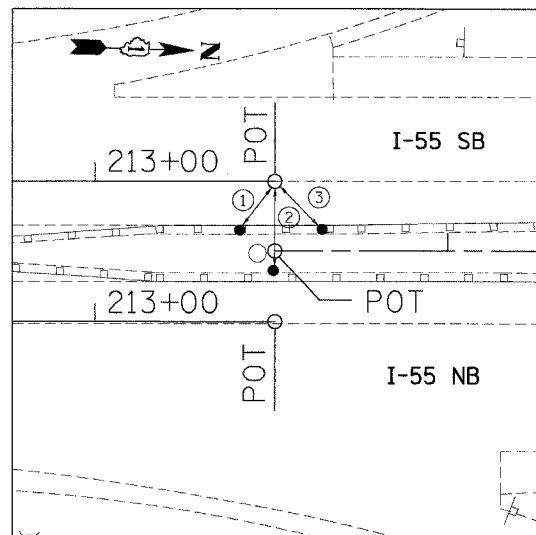
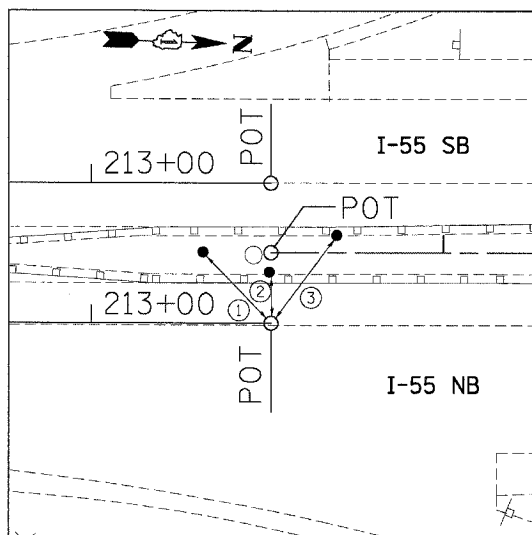


F.A.I. RTE.	SECTION	COUNTY	TOTAL SHEETS	SHEET NO.
55	2005-062 I	WILL.	72	9
STA. TO STA.		FED. ROAD DIST. NO. ILLINOIS FED. AID PROJECT		



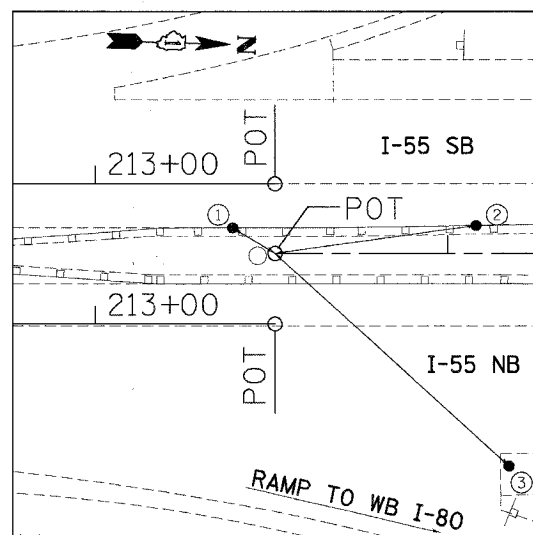
POT STA. 213+51.00

- ① PK NAIL, NW'LY OF FOUND MAG NAIL, 17.17'
- ② PK NAIL, W. OF FOUND MAG NAIL, 25.52'
- ③ PK NAIL, SW'LY OF FOUND MAG NAIL, 19.27'



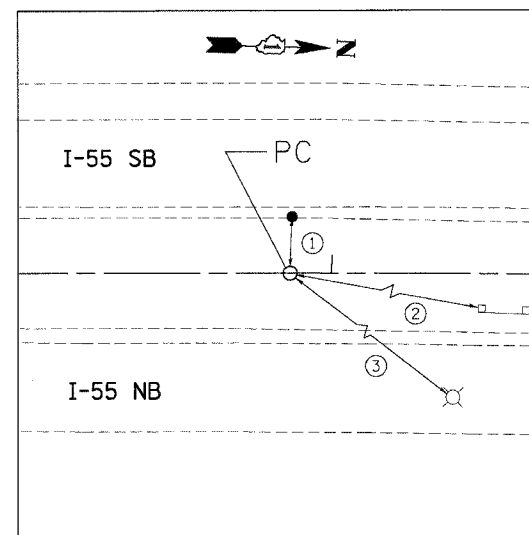
POT STA. 213+51.00

- ① PK NAIL, NE'LY OF FOUND MAG NAIL, 27.85'
- ② PK NAIL, E. OF FOUND MAG NAIL, 14.49'
- ③ PK NAIL, SE'LY OF FOUND MAG NAIL, 29.39'



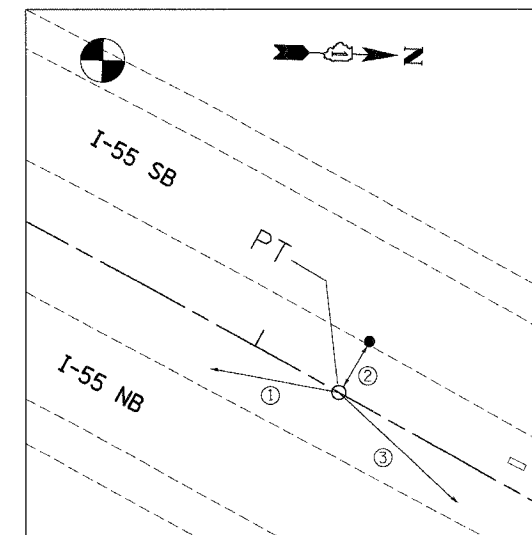
POT STA. 213+51.00

- ① PK NAIL, ON TOP OF GR SPACE TO I-BEAM, 14.02'
- ② PK NAIL, TOP OF GR SPACER TO I-BEAM OPP. MERGE SIGN ON SB, 57.63'
- ③ PK NAIL, AT GORE FOR I-80 RAMP WB, 67.37'



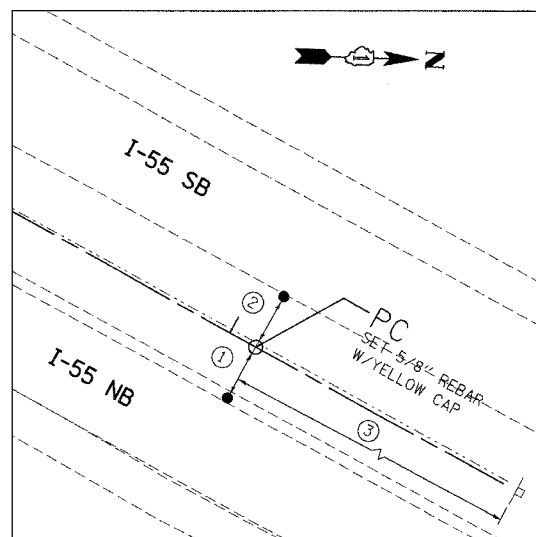
PC STA. 273+88.19

- ① PK NAIL, EDGE OF E. SHLDR OF I-55 SB, 15.97'
- ② PK NAIL, GR POST ALONG W. SHLDR. OF NB I-55, 139.33'
- ③ 'X' CUT ON W. SIDE OF CONC. BASE OF LP, 119.43'



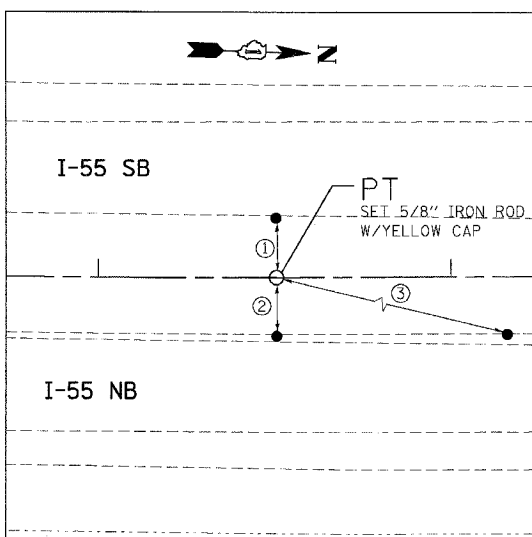
PT STA. 303+27.19

- ① PK NAIL, TOP OF WD. SPACER TO GR, 36.22'
- ② PK NAIL, E. EDGE OF SB I-55 SHLDR, 16.26'
- ③ PK NAIL, TOP OF WD. SPACER S. OF TIE #1, 45.48'



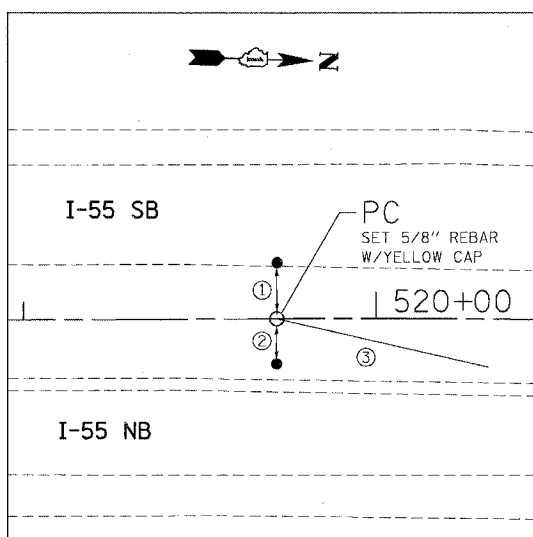
PC STA. 384+08.43

- ① PK NAIL, W. E.P. SHLDR ON NB, 16.39'
- ② PK NAIL, E. E.P. SHLDR ON SB, 16.44'
- ③ PK NAIL, E. FACE OF WD POST, 160.77'



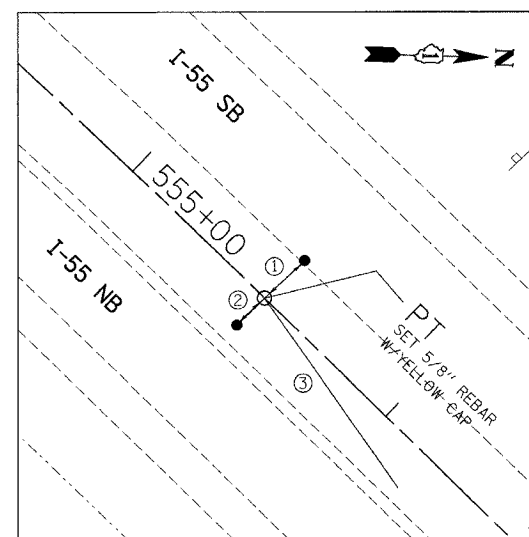
PT STA. 413+50.50

- ① PK NAIL, E. E.P. OF SHLDR ON SB I-55 OPPOSITE P.T., 17.305'
- ② PK NAIL, W. E.P. OF SHLDR ON NB I-55 OPPOSITE P.T., 16.747'
- ③ PK NAIL, W. E.P. OF SHLDR ON NB I-55 OPPOSITE SURFACE DRAIN TO CENTER MEDIAN, 130.54'



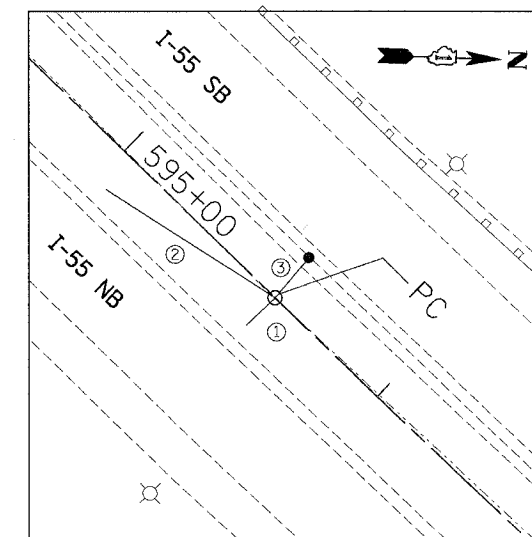
PC STA. 519+71.86

- ① PK NAIL, SHLDR E.P. OF SB I-55, 15.964'
- ② PK NAIL, ON TOP OF POST SPACER TO GR W, 12.796'
- ③ PK NAIL, ON 10TH I-BEAM N. OF TIE# 2, 61.467'



PT STA. 555+51.97

- ① PK NAIL, E. E.P. SB I-55 OPP. P.T., 15.601'
- ② PK NAIL, TOP OF WD. POST SPACER ON GR., 11.095'
- ③ PK NAIL, ON 10TH WD. POST SPACER ON GR NE'LY OF TIE # 2, 65.809'



PC STA. 595+59.70

- ① PK NAIL, ON TOP OF WD. SPACER TO GR, W. SIDE OF NB I-55, 11.215'
- ② PK NAIL, ON TOP OF WD. SPACER TO GR ON 10TH POST S. OF TIE# 1, 56.874'
- ③ PK NAIL, E.P. TO SHLDR OF SB I-55, 15.493'

PLOT DATE = 05/19/06  
 FILE NAME = #FILE#  
 PLOT SCALE = #SCALE#  
 USER NAME = #USER#  
 SA:\DOCUMENTS\2005\0621\CVL\JOB\180714065.SHT  
 GARCIAZ  
 5-17-2006 14:28:11

REVISIONS	
NAME	DATE

ILLINOIS DEPARTMENT OF TRANSPORTATION  
 FAI ROUTE 55 (I-80 TO U.S. 30)  
 SIGNING

**ALIGNMENT, TIES AND BENCHMARKS**

SCALE: N.T.S. DRAWN BY SB  
 DATE 05/19/06 CHECKED BY DDH

**TENG** TENG & ASSOCIATES, INC.  
 ENGINEERS/ARCHITECTS/PLANNERS  
 CHICAGO, ILLINOIS