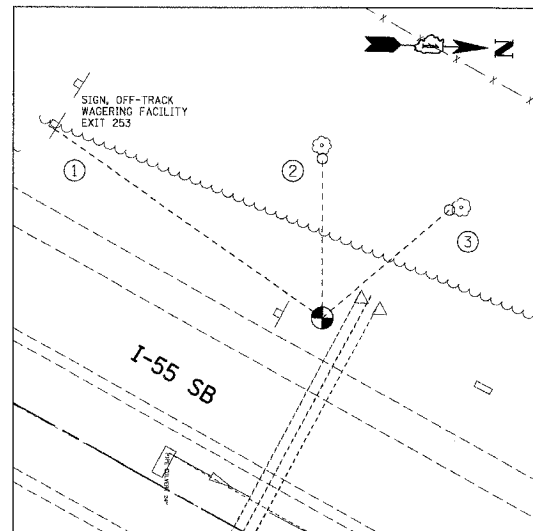
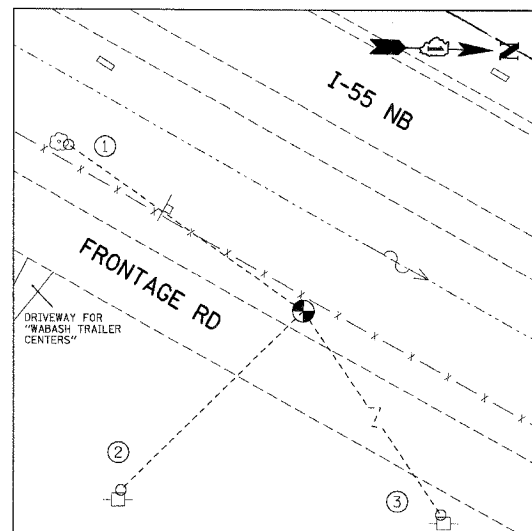


| F.A.I. RTE. | SECTION | COUNTY | TOTAL SHEETS | SHEET NO. |
|---------------------|------------|------------------|--------------|-----------|
| 55 | 2005-062 I | WILL | 72 | 12 |
| STA. | | TO STA. | | |
| FED. ROAD DIST. NO. | ILLINOIS | FED. AID PROJECT | | |



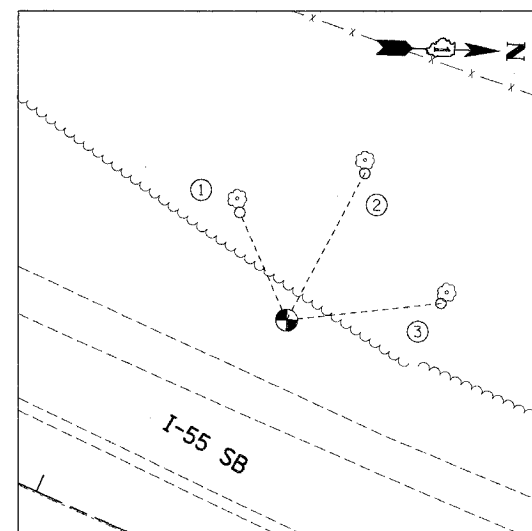
TP21

- (N 1770894.475, E 1025071.461, ELEV. 580.457)
- ① NEAREST CORNER OF SIGN POST, 94.35'
 - ② PK NAIL ON WEST FACE OF 12" TREE, 45.05'
 - ③ PK NAIL ON SOUTH FACE OF 14" TREE, 47.50'



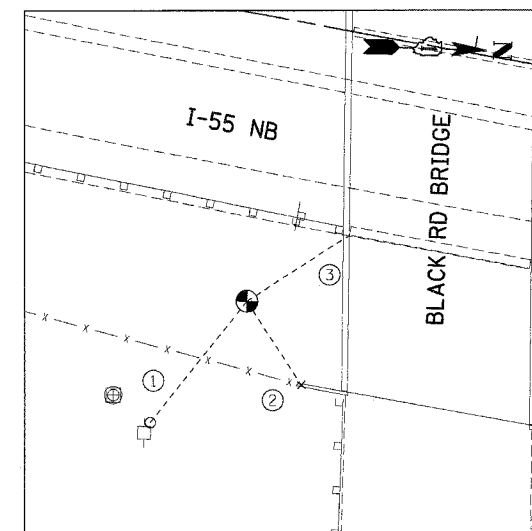
TP22

- (N 1771524.797, E 1025577.049, ELEV. 581.842)
- ① PK NAIL ON NORTH FACE OF 16" TREE, 81.65'
 - ② PK NAIL ON WEST FACE OF POWER POLE, 72.95'
 - ③ PK NAIL ON WEST FACE OF POWER POLE, 143.05'



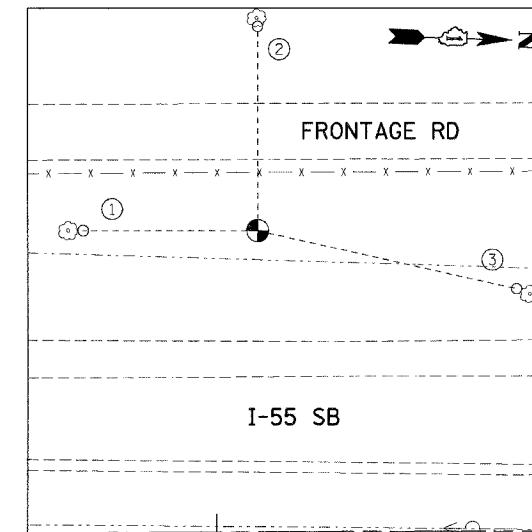
TP23

- (N 1772386.338, E 1025806.470, ELEV. 579.479)
- ① PK NAIL ON EAST FACE OF 16" TREE, 33.30'
 - ② PK NAIL ON EAST FACE OF 12" TREE, 47.20'
 - ③ PK NAIL ON EAST FACE OF 28" TREE, 44.20'



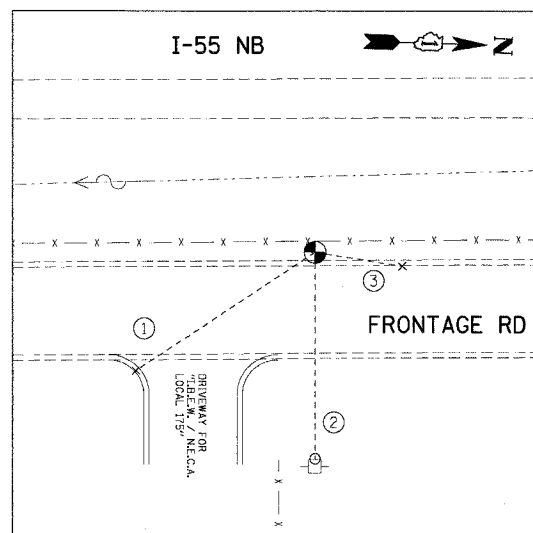
TP24

- (N 1773599.891, E 1026302.676, ELEV. 588.101)
- ① PK NAIL ON WEST FACE OF POWER POLE, 44.20'
 - ② CUT CROSS ON TOP OF BRIDGE WING WALL, 28.60'
 - ③ NEAREST CORNER OF CONCRETE PIER BASE, 34.80'



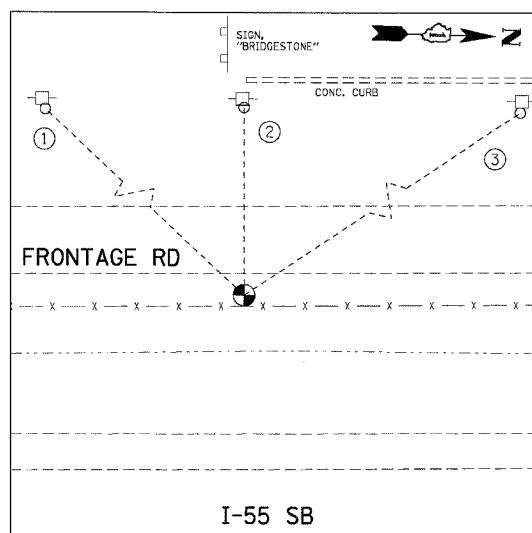
TP25

- (N 1774768.339, E 1026201.638, ELEV. 581.191)
- ① PK NAIL ON NORTH FACE OF 26" TREE, 49.70'
 - ② PK NAIL ON WEST FACE OF 24" TREE, 60.70'
 - ③ PK NAIL ON SOUTH FACE OF 14" TREE, 75.50'



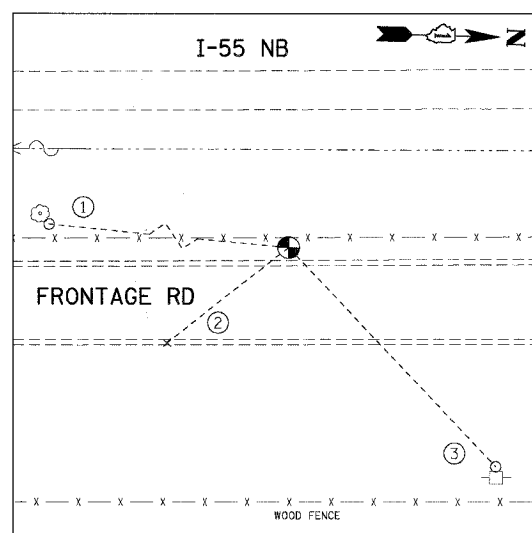
TP26

- (N 1775767.608, E 1026345.581, ELEV. 590.522)
- ① CUT CROSS SET ON TOP OF CURB, 61.10'
 - ② PK NAIL ON WEST FACE OF POWER POLE, 58.80'
 - ③ CUT CROSS SET ON TOP OF CURB, 25.10'



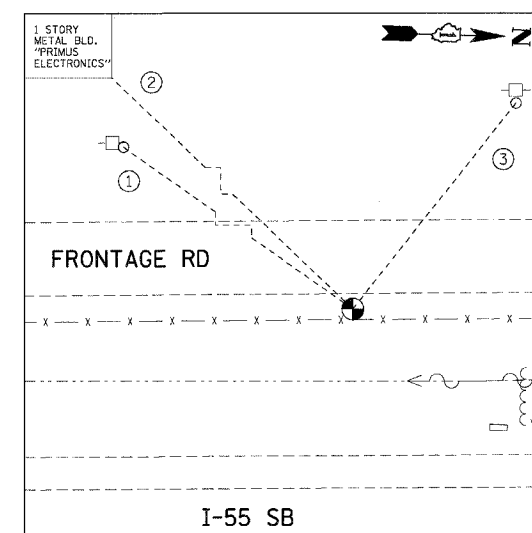
TP27

- (N 1776768.806, E 1026122.916, ELEV. 591.174)
- ① PK NAIL ON EAST FACE OF POWER POLE, 99.90'
 - ② PK NAIL ON EAST FACE OF POWER POLE, 53.50'
 - ③ PK NAIL ON EAST FACE OF POWER POLE, 121.63'



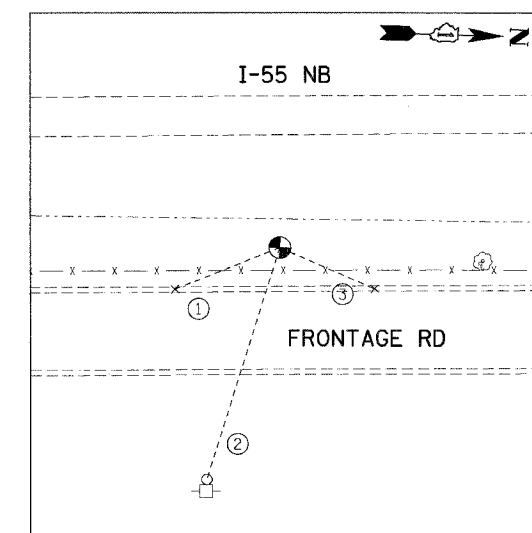
TP28

- (N 1777544.478, E 1026283.640, ELEV. 598.777)
- ① PK NAIL ON EAST FACE OF 22" TREE, 117.40'
 - ② CUT CROSS ON TOP OF CURB, 44.00'
 - ③ PK NAIL ON WEST FACE OF POWER POLE, 85.90'



TP29

- (N 1778396.107, E 1026063.864, ELEV. 595.111)
- ① PK NAIL ON NORTH FACE OF POWER POLE, 161.41'
 - ② NEAREST CORNER OF BUILDING, 260.10'
 - ③ PK NAIL ON SURFACE OF POWER POLE, 74.90'



TP30

- (N 1779803.620, E 1026196.284, ELEV. 590.699)
- ① CUT CROSS ON TOP OF CURB, 32.10'
 - ② PK NAIL ON WEST FACE OF POWER POLE, 69.30'
 - ③ CUT CROSS ON TOP OF CURB, 29.40'

NOTE:
ALL CONTROL POINTS ON THIS SHEET WERE SET WITH 2" IRON ROD WITH YELLOW CAP

| REVISIONS | |
|-----------|------|
| NAME | DATE |
| | |
| | |
| | |
| | |
| | |
| | |

ILLINOIS DEPARTMENT OF TRANSPORTATION
FAI ROUTE 55 (I-80 TO U.S. 30)
SIGNING

**ALIGNMENT, TIES AND BENCHMARKS
VIII**

SCALE: N.T.S. DRAWN BY: SB
DATE: 05/19/06 CHECKED BY: DDH

TENG TENG & ASSOCIATES, INC.
ENGINEERS/ARCHITECTS/PLANNERS
CHICAGO, ILLINOIS

PLOT DATE = 05/19/06
 FILE NAME = 051906.DWG
 PLOT SCALE = 1/8"=1'-0"
 USER NAME = MUSEP