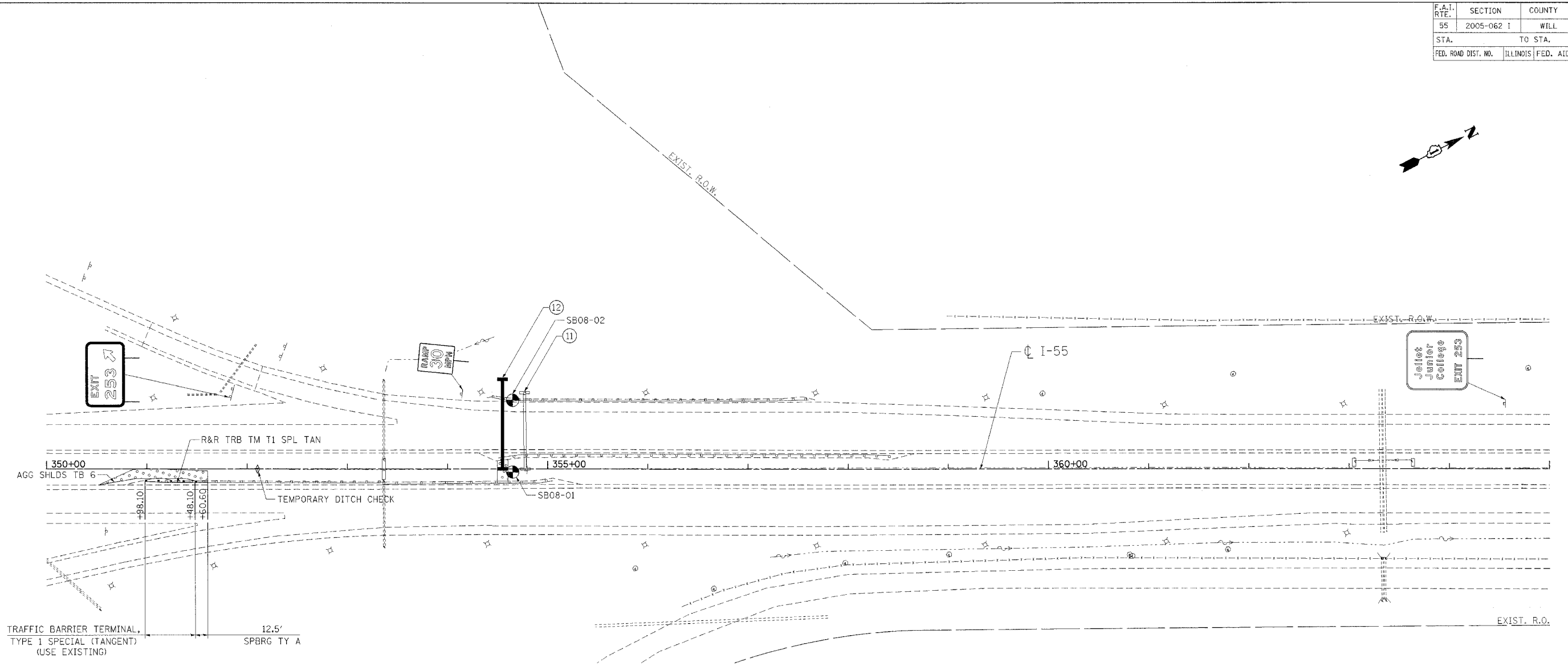
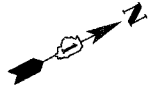
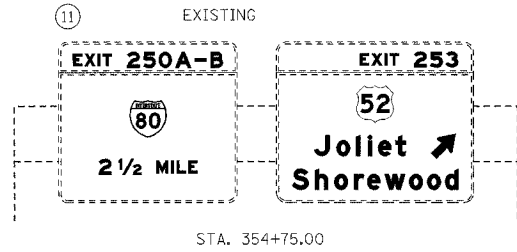


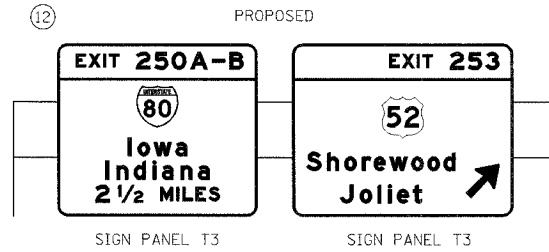
F.A.I. RTE.	SECTION	COUNTY	TOTAL SHEETS	SHEET NO.
55	2005-062 I	WILL	72	19
STA. TO STA.		FED. ROAD DIST. NO. ILLINOIS FED. AID PROJECT		



TRAFFIC BARRIER TERMINAL, TYPE 1 SPECIAL (TANGENT) (USE EXISTING)  
12.5' SPBRG TY A



- ERECT OVHD SIN STR-SPAN T1A 20 FT SOUTH OF EXISTING
- INSTALL PROPOSED SIGN PANEL T3 ON NEW TRUSS
- REMOVE SIGN PANEL T3 FROM EXISTING TRUSS
- REMOVE OH SIN STR-SPN
- REMOVE CONC FDN-OVHD



1S0991055L253.03  
STA 354+55.00

**SIGNING LEGEND**

- EXISTING OVERHEAD TRUSS MOUNTED SIGN
- PROPOSED OVERHEAD TRUSS MOUNTED SIGN
- PROPOSED DYNAMIC MESSAGE SIGN
- EXISTING OVERHEAD CANTILEVER SIGN
- PROPOSED OVERHEAD CANTILEVER SIGN
- EXISTING GROUND MOUNTED SIGN (1 POSTS)
- EXISTING GROUND MOUNTED SIGN (2 POSTS)
- PROPOSED GROUND MOUNTED SIGN (2 POSTS)

**LEGEND**

- SEEDING CLASS 2A, TOPSOIL FURNISH AND PLACE, (VAR. DEPTH) AND EROSION CONTROL
- DIRECTION OF TRAFFIC
- SOIL BORING

REVISIONS	
NAME	DATE

ILLINOIS DEPARTMENT OF TRANSPORTATION  
FAI ROUTE 55 (I-80 TO U.S. 30)  
SIGNING

**SIGNING AND ROADWAY PLAN  
SIGN TRUSS AT STA. 354+55.00 (SB)**

SCALE: 1"=50'  
DATE 05/13/06  
DRAWN BY MW  
CHECKED BY DDH



PLOT DATE = #DATE#  
 FILE NAME = #FILE#  
 USER NAME = #USER#  
 \\ALF191020\LDN\...  
 5-22-2006 16:05:14  
 GARCIA