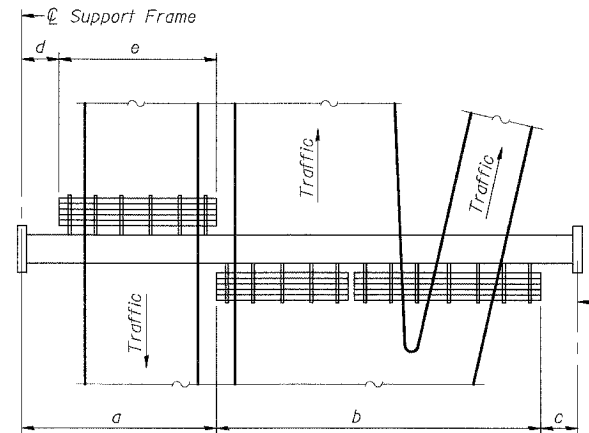


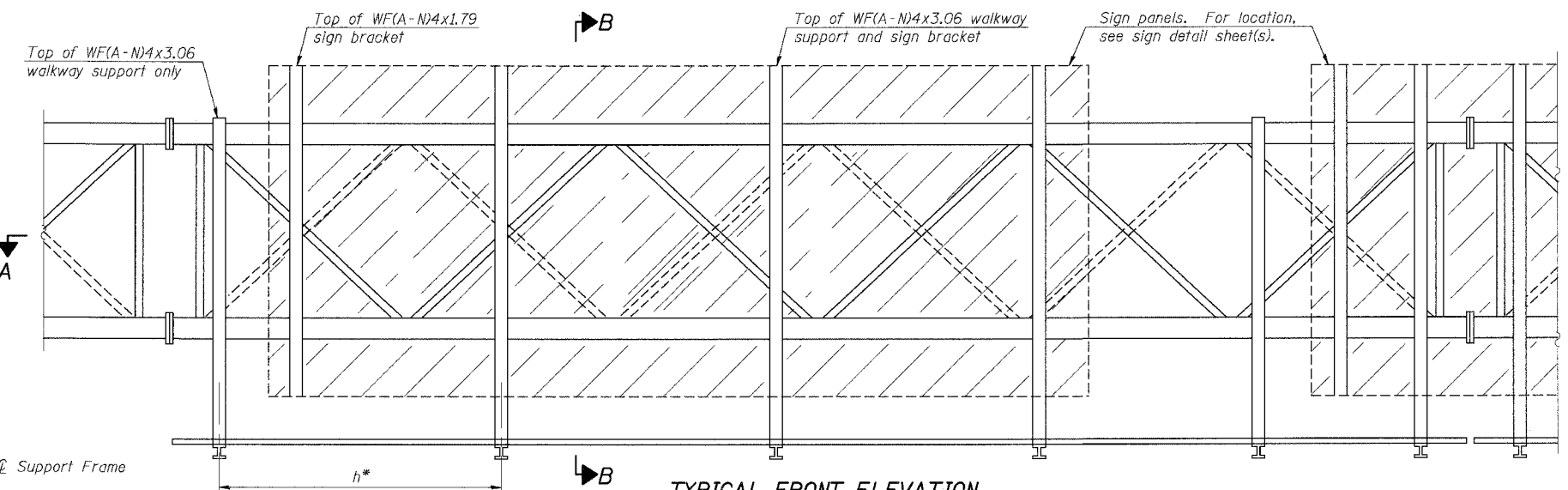
F.A.I. RTE.	SECTION	COUNTY	TOTAL SHEETS	SHEET NO.
55	2005-062 I	WILL	72	33
STA.		TO STA.		
FED. ROAD DIST. NO.		ILLINOIS	FED. AID PROJECT	



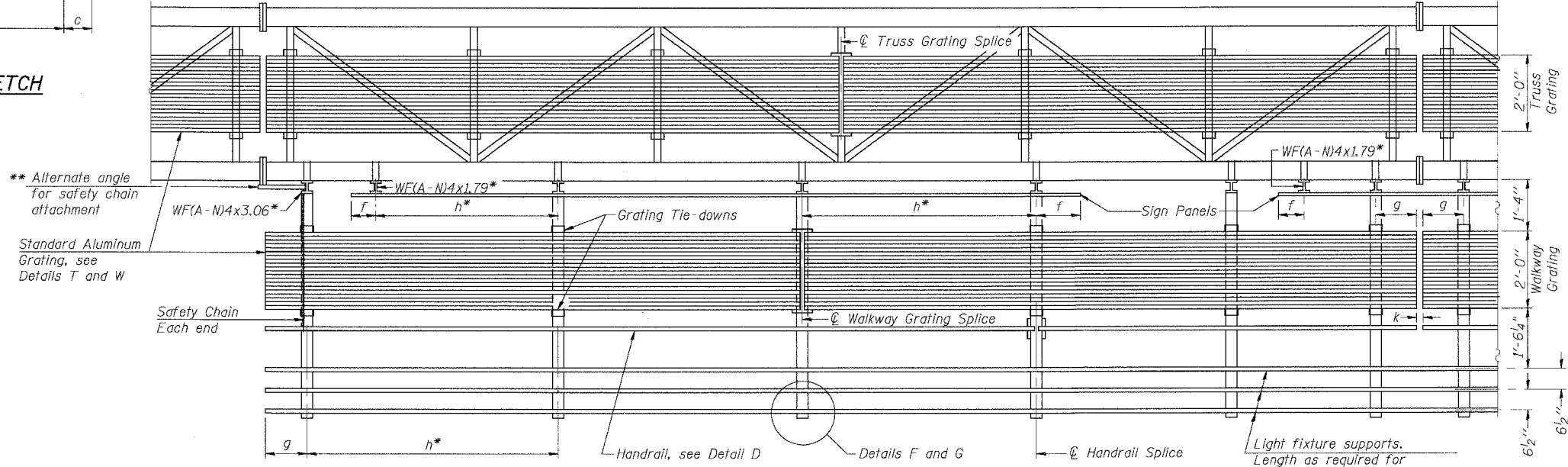
PLAN WALKWAY AND HANDRAIL SKETCH
(Road plan beneath truss varies)

BRACKET TABLE

Sign Width		Number Brackets Required
Greater Than	Less Than or Equal To	
	8'-0"	2
8'-0"	14'-0"	3
14'-0"	20'-0"	4
20'-0"	26'-0"	5
26'-0"	32'-0"	6



TYPICAL FRONT ELEVATION
With lights and handrail omitted for clarity.
For Section B-B, see Base Sheet OS-A-10.



SECTION A-A

Handrail and walkway shall span a minimum of three brackets between splices and/or gap joints. Place all sign and walkway brackets as close to panel points as practical. Grating, handrail and light support splices placed as needed.

Truss grating to facilitate inspection shall run full length (center to center of support frames) ±12" on overhead trusses. Cost of truss grating is included in "Overhead Sign Structure".

- Notes:
- * Space walkway brackets WF(A-N)4x3.06 and sign brackets WF(A-N)4x1.79 for efficiency and within limits shown:
 - f = 12" maximum, 4" minimum (End of sign to ϕ of nearest bracket)
 - g = 12" maximum, 4" minimum (End of walkway grating to ϕ of nearest support bracket)
 - h = 6'-0" maximum (ϕ to ϕ sign and/or walkway support brackets, WF(A-N)4x1.79 or WF(A-N)4x3.06)
 - k = 2" maximum gap between adjacent walkway grating sections and handrail ends

- ** If walkway bracket at safety chain location is behind sign, add angle to bracket, see Alternate Safety Chain Attachment on Base Sheet OS-A-11.
 - ** Alternate angle for safety chain attachment
- For Details T and W, Section B-B and Grating Splice Details, see Base Sheet OS-A-10.
For Details D, F, G and P and Handrail Splice Details, see Base Sheet OS-A-11.

Structure Number	Station	a	b	c	d	e	Walkway Grating and Handrail Lengths
IS0991055R249.90	189+70	45'-0 1/2"	46'-1"	12'-10 1/2"	---	---	46'-1"
IS0991055L250.67	229+76	17'-4"	46'-10"	12'-10"	---	---	46'-10"
IS0991055R251.02	248+22	19'-7"	40'-10"	14'-7"	---	---	40'-10"
IS0991055L251.17	256+26	31'-4"	37'-2"	13'-6"	---	---	37'-2"
IS0991055R252.64	333+75	19'-10"	38'-9"	32'-5"	---	---	38'-9"
IS0991055L253.03	354+55	18'-9"	38'-8"	31'-7"	---	---	38'-8"

NUMBER	REVISION	DATE

OS-A-9 1-7-05

SHT. S-7 OF 27

REVISIONS	
NAME	DATE

ILLINOIS DEPARTMENT OF TRANSPORTATION
FAI ROUTE 55 (I-80 TO U.S. 30)
SIGNING
WILL COUNTY

**OVERHEAD SIGN STRUCTURES
ALUMINUM WALKWAY
DETAILS**

SCALE: DRAWN BY MDB
DATE 05/19/06 CHECKED BY MJK

TENG TENG & ASSOCIATES, INC.
ENGINEERS/ARCHITECTS/PLANNERS
CHICAGO, ILLINOIS

PLOT DATE = 05/19/06
 FILE NAME = OS-A-9
 PLOT SCALE = 1/8"=1'-0"
 USER NAME = MUSER6
 S:\DOCUMENTS\PROJECTS\STRUCT\DRAWINGS\OS-A-9.DWG
 5-17-2006 14:27:44
 EARC:BAZ