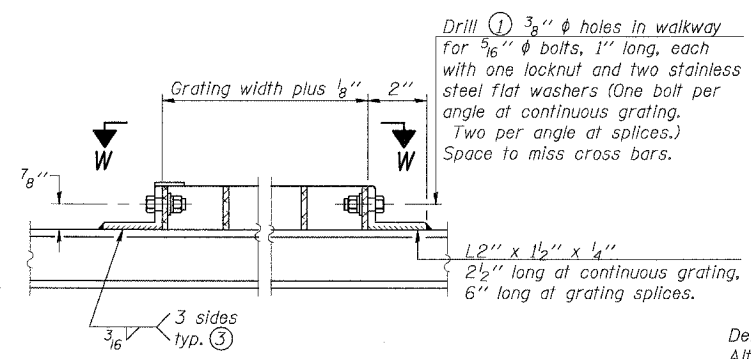
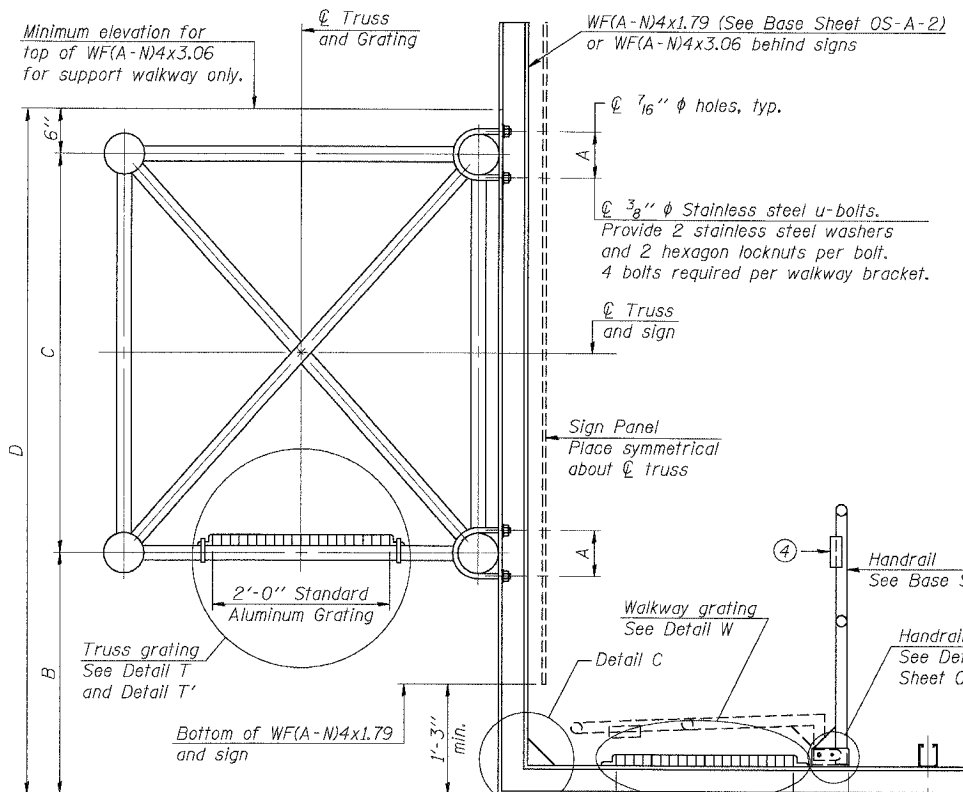
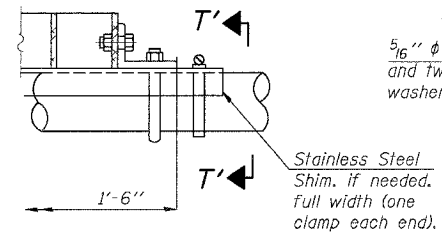


F.A.I. RTE.	SECTION	COUNTY	TOTAL SHEETS	SHEET NO.
55	2005-062 I	WILL	72	34
STA. TO STA.		FED. ROAD DIST. NO. ILLINOIS FED. AID PROJECT		

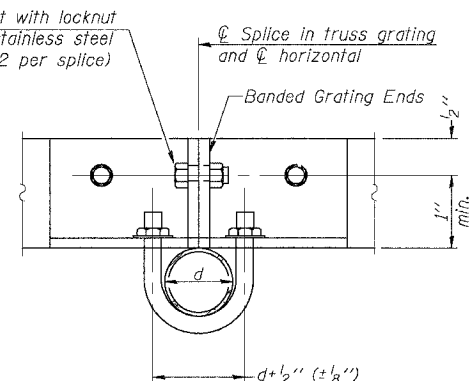


**DETAIL W**  
(Walkway grating)

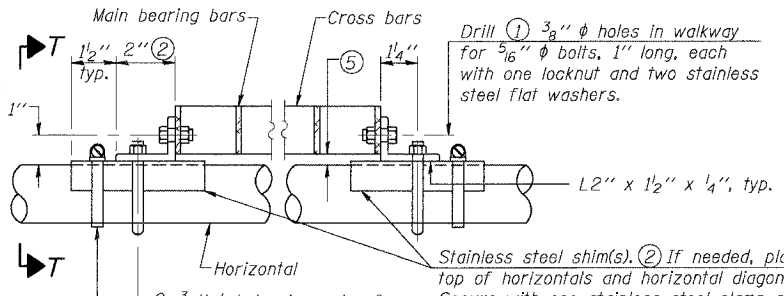


**DETAIL T'**

(Truss grating splice)  
Details not shown same as Detail T.  
Alternate materials may be used subject to the Engineer's review and approval.

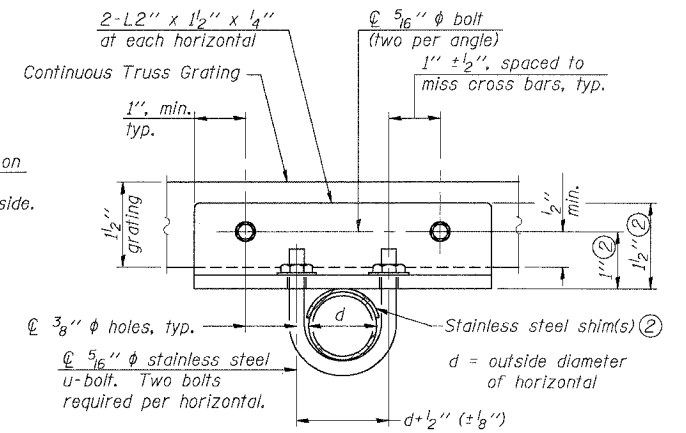


**SECTION T'-T'**

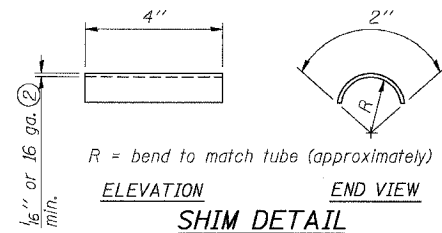


**DETAIL T**

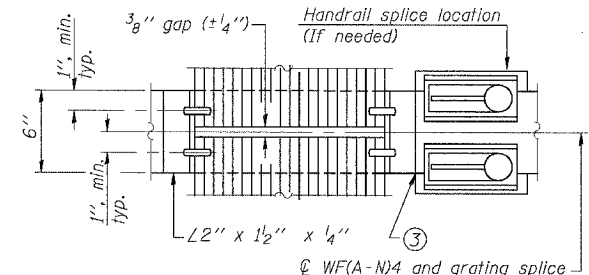
(Continuous truss grating)



**SECTION T-T**



**SHIM DETAIL**



**SECTION B-B**

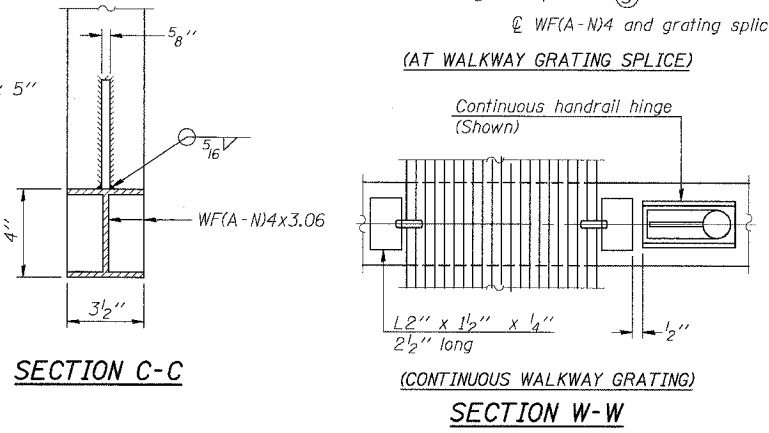
**SPECIFICATIONS FOR STANDARD ALUMINUM GRATING**

Main Bearing Bars shall be 3/16" x 1 1/2" on 1 3/16" centers and conform to ASTM B221 Alloy 6061-T6.  
Cross bars shall be 3/16" x 1 1/2" on 4" centers and conform to ASTM B221 Alloy 6063-T5 or 6061-T6.

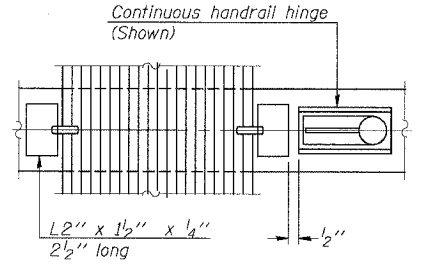
OR

Aluminum Grating with modified "I" sections for main bearing bars shall meet the following requirements:  
Main bars shall conform to ASTM B221 Alloy 6061-T6 and have a minimum section modulus equal to 0.0705 in.<sup>3</sup> per bar, a depth of 1 1/2", spaced on 1 3/16" centers.  
Cross bars shall conform to ASTM B221 Alloy 6063-T5 or T-42 and spaced on 4" centers.

Structure Number	Station	A	B	C	D
IS0991055R249.90	189+70	7"	4'-10 1/2"	5'-3"	10'-7 1/2"
IS0991055L250.67	229+76	5 1/2"	5'-3"	4'-6"	10'-3"
IS0991055R251.02	248+22	5 1/2"	6'-3"	4'-6"	11'-3"
IS0991055L251.17	256+26	5 1/2"	5'-3"	4'-6"	10'-3"
IS0991055R252.64	333+75	6"	5'-3"	4'-6"	10'-3"
IS0991055L253.03	354+55	5 1/2"	5'-3"	4'-6"	10'-3"

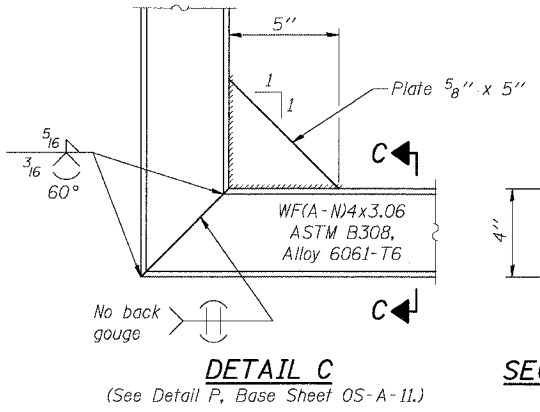


**SECTION C-C**



**SECTION W-W**

NUMBER	REVISION	DATE



**DETAIL C**

(See Detail P, Base Sheet OS-A-11.)

- Drilling holes in grating may be done in shop or field, based on Contractor's preference and subject to accurate alignment.
- Stainless steel shims shall be placed as shown in Detail T if needed to compensate for alignment variations between horizontal and diagonal pipes beyond adjustment provided by angles. Thicker shims may be used subject to shims performing properly.
- If Handrail Joint present, weld angle to WF(A-N)4 and 1/4" extension bars. (See Base Sheet OS-A-11.)
- 1/8" x 1/2" x 2" welded to handrail posts to protect locations that contact grating.
- Tube to grating gap may vary from 0 to 1/2", max. to align walkway, allow for camber, etc.

SHT. S-8 OF 27

REVISIONS	
NAME	DATE

ILLINOIS DEPARTMENT OF TRANSPORTATION  
FAI ROUTE 55 (I-80 TO U.S. 30)  
SIGNING  
WILL COUNTY

**OVERHEAD SIGN STRUCTURES  
ALUMINUM WALKWAY  
DETAILS**

SCALE: DATE 05/19/06 DRAWN BY: MOB CHECKED BY: MJK

**TENG**  
TENG & ASSOCIATES, INC.  
ENGINEERS/ARCHITECTS/PLANNERS  
CHICAGO, ILLINOIS

PLOT DATE = 05/19/06  
 FILE NAME = 05A10.DWG  
 PLOT SCALE = 1/8"=1'-0"  
 USER NAME = JUSER8  
 5-17-2006, 14:27:46  
 S:\DOCUMENT\0226161\02\STRUCT\DRAW\55071401\A.SHT  
 CARCINAZ