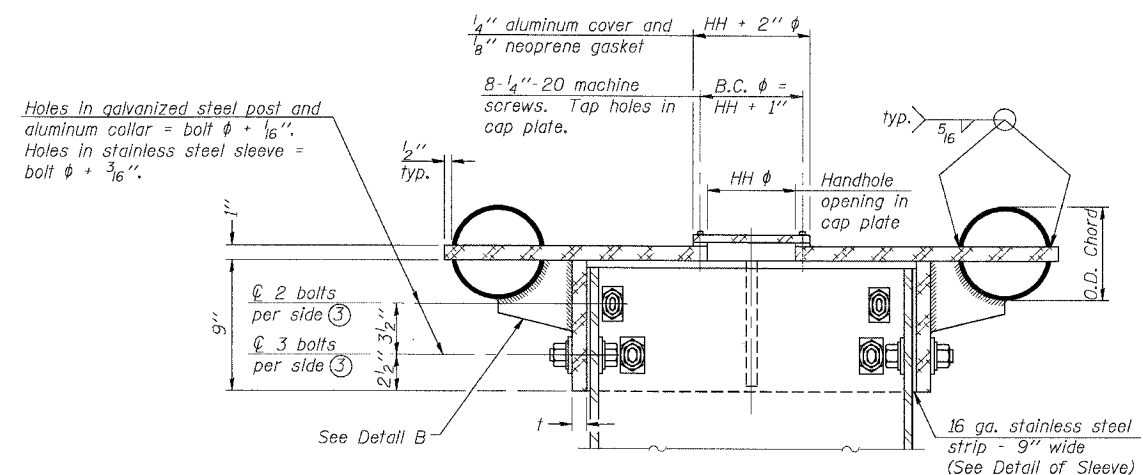
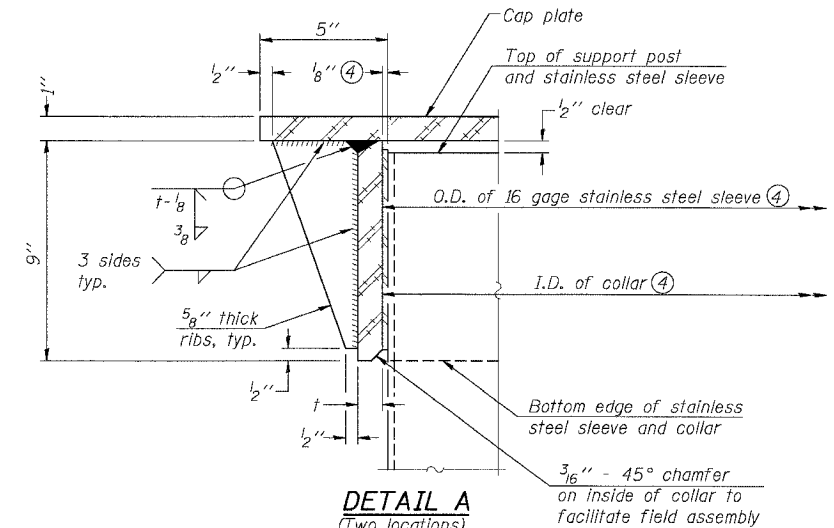


F.A.I. RTE.	SECTION	COUNTY	TOTAL SHEETS	SHEET NO.
55	2005-062 I	WILL	72	41
STA.		TO STA.		
FED. ROAD DIST. NO.		ILLINOIS FED. AID PROJECT		

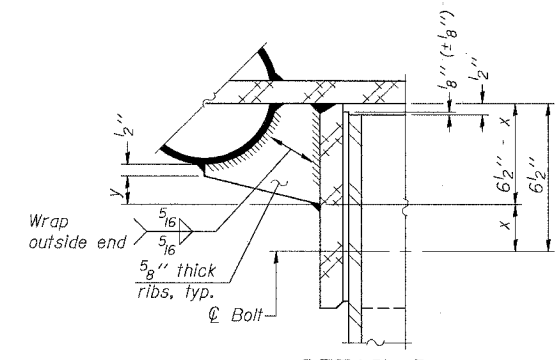


④ Collar I.D. shall be manufactured to correspond to O.D. of actual galvanized post and stainless steel sleeve plus 1/8 inch (± 1/16 inch). Maximum gap between post and collar at any location equals 1/8 inch before tightening bolts.

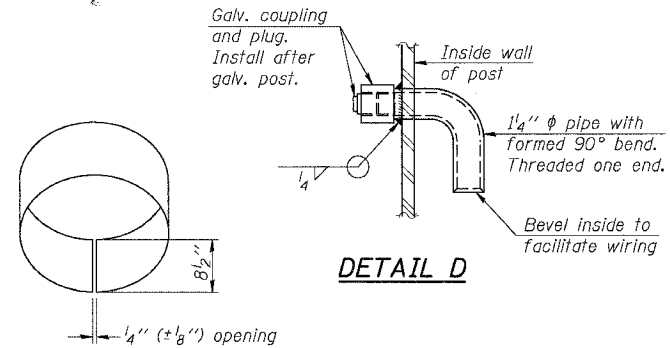
SECTION B-B
Bolts, washers (including contoured washers), and locknuts shall be stainless steel.



DETAIL A
(Two locations)

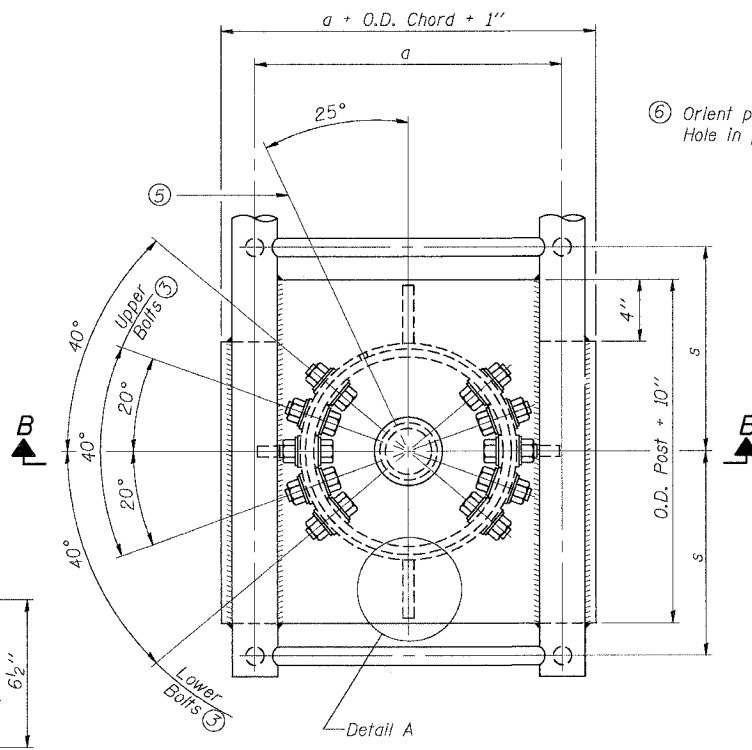


DETAIL B
Two locations
(For details not shown, see Detail C)

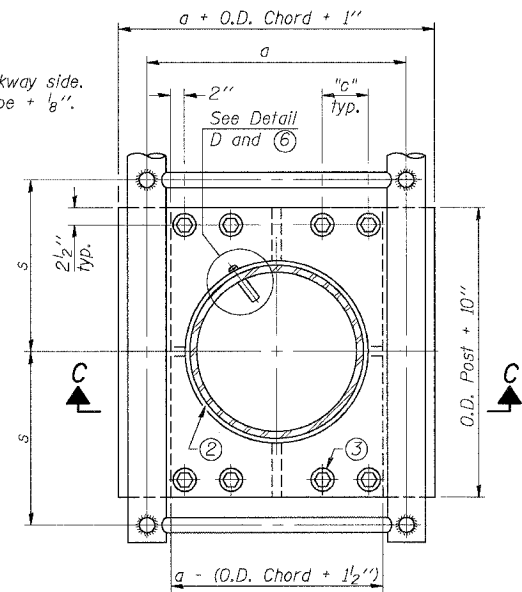


DETAIL OF STAINLESS STEEL SLEEVE
Weld to post after galvanizing. (Prepare post surface to insure tight, uniform fit and allow welding.) Welds to be 1/2 inch long at 6 inch cts. along top edge and at 1/4 inch opening.

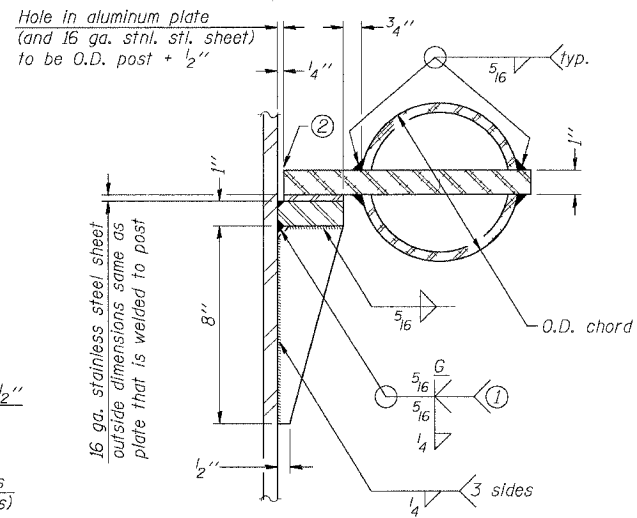
NUMBER	REVISION	DATE



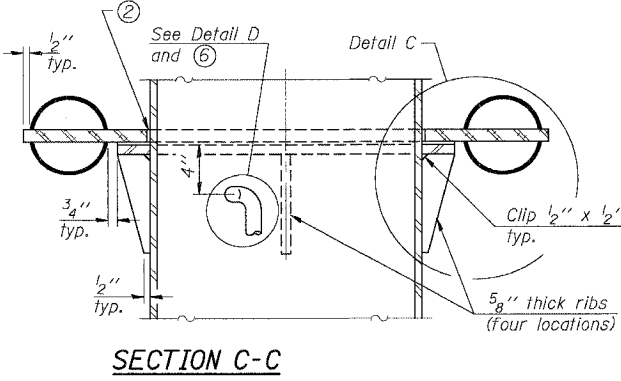
PLAN VIEW - TOP OF COLUMN
⑤ Optional full penetration weld in collar. (Two locations maximum...180 degrees apart)...X-ray or UT 100%



SECTION THRU POST ABOVE LOWER CHORDS



DETAIL C
① Grind top if required to fully seat aluminum plate and stainless steel sheet.
② After tightening lower connection bolts, fill gap with non-hardening, silicone caulk suitable for exterior exposure and acceptable to the Engineer. Cost is included in Overhead Sign Structure Cantilever.



SECTION C-C

CONTOURED WASHERS

Bolt Size	Hole Dia.	B
7/8"	1"	2 1/2"
1"	1 1/8"	3"
1 1/4"	1 3/8"	3 1/4"

Truss Type	Post Size	Upper & Lower Connection Bolt Diameter ③	Lower Juncture Bolt Spacing Dimension "c" ③	Opening in Cap Plate "HH"	Collar Thickness (t)	Side Ribs
						x y
I-C-A	16" φ (83#1)	7/8"	3 1/4"	8"	5/8"	1 3/4" 2 1/4"
II-C-A	24" φ (125#1)	1"	3 1/2"	12"	7/8"	2" 1 1/4"
III-C-A	24" φ (35' max.) (125#1)	1 1/4"	3 1/2"	12"	7/8"	2" 1"
III-C-A	24" φ (>35' to 40') (171#1)	1 1/4"	3 1/2"	12"	7/8"	2" 1"

③ Upper and lower connection bolts in collar and bolts at lower chord connection shall be high strength with matching locknuts. Connection bolts shall have 2 stainless steel flat washers each.

SHT. S-15 OF 27

REVISIONS	
NAME	DATE

ILLINOIS DEPARTMENT OF TRANSPORTATION
FAI ROUTE 55 (I-80 TO U.S. 30)
SIGNING
WILL COUNTY

**CANTILEVER SIGN STRUCTURES
JUNCTURE DETAILS
ALUMINUM TRUSS & STEEL POST**

SCALE: DATE 05/19/06 DRAWN BY MDB CHECKED BY MJK

TENG
TENG & ASSOCIATES, INC.
ENGINEERS/ARCHITECTS/PLANNERS
CHICAGO, ILLINOIS

PLOT DATE = 05/19/06
 PLOT NAME = OSC-A-3
 PLOT SCALE = 1/8"=1'-0"
 USER NAME = MJB
 S:\DOCUMENT\2005\062\STRUCT\CON\5597\A27.SHT
 GARCIAZ
 5-17-2006, 14:53:26