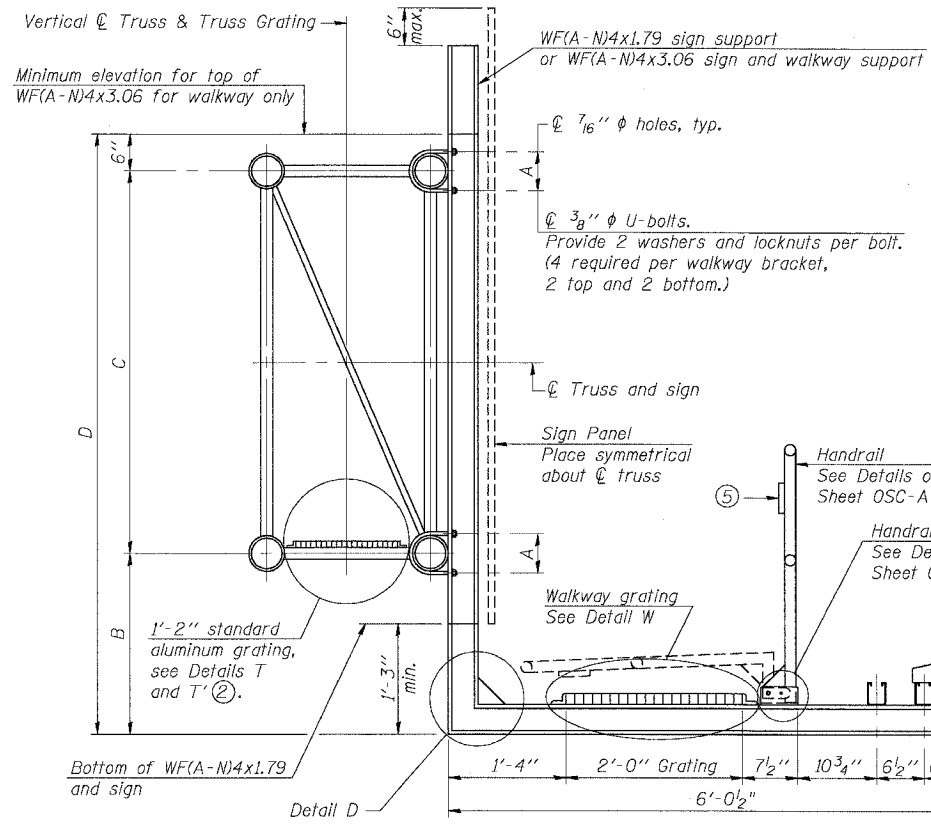
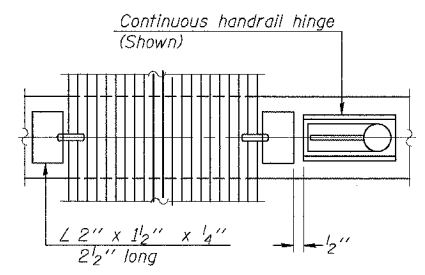


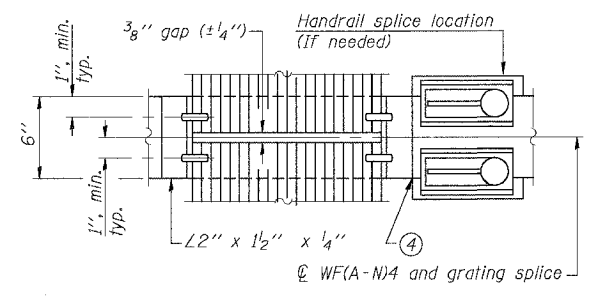
F.A.I. RTE.	SECTION	COUNTY	TOTAL SHEETS	SHEET NO.
55	2005-062 I	WILL	72	44
STA.		TO STA.		
FED. ROAD DIST. NO.		ILLINOIS FED. AID PROJECT		



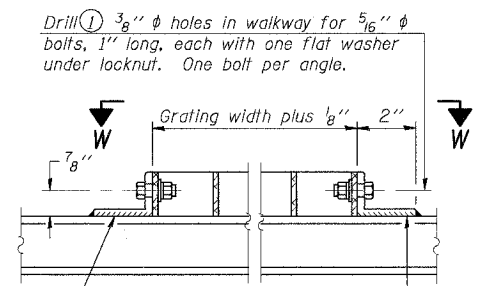
SECTION B-B



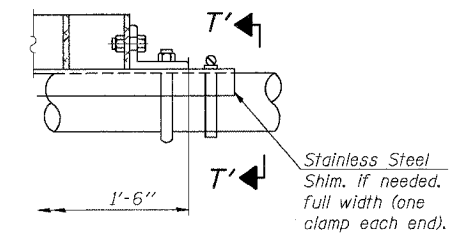
(CONTINUOUS WALKWAY GRATING)



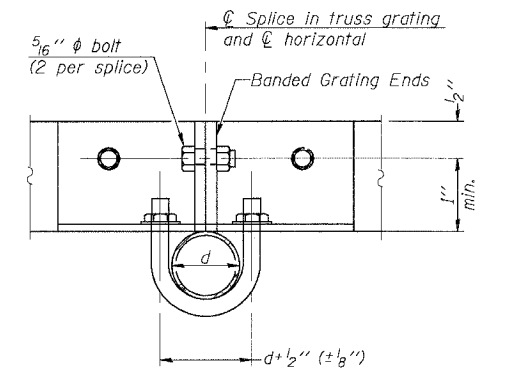
SECTION W-W (AT WALKWAY GRATING SPLICE)



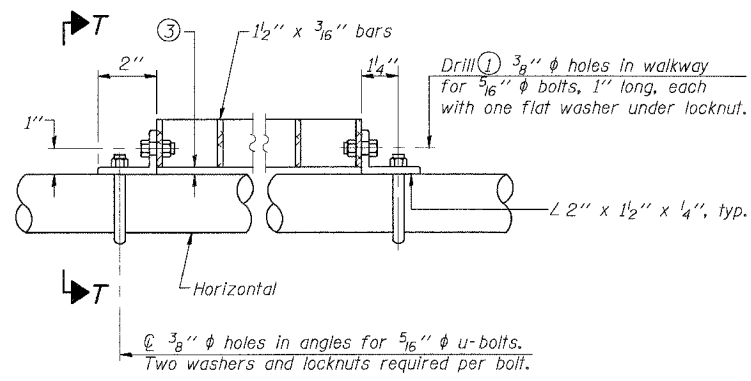
DETAIL W (Walkway grating)



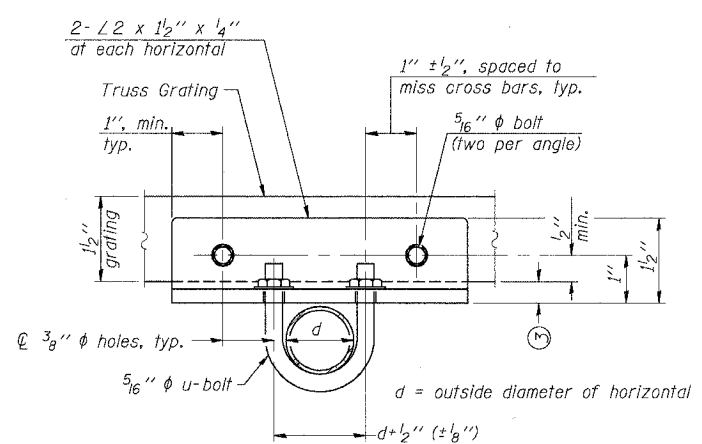
DETAIL T' (Truss grating splice)



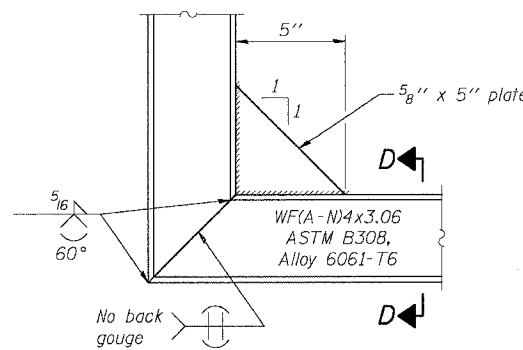
SECTION T'-T'



DETAIL T (Truss grating at horizontal)

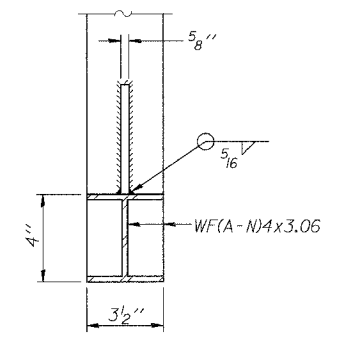


SECTION T-T'



DETAIL D

(See Detail P, Base Sheet OSC-A-8.)



SECTION D-D

SPECIFICATIONS FOR STANDARD ALUMINUM GRATING
 Main Bearing Bars (MBB) shall be 3/16" x 1 1/2" on 1 3/16" centers and conform to ASTM B211 Alloy 6061-T6.
 Cross bars (CB) shall be 3/16" x 1 1/2" on 4" centers and conform to ASTM B221 Alloy 6063-T5 or 6061-T6.

OR
 Aluminum Grating with modified "T" sections for main bearing bars shall meet the following requirements:
 Main bars shall conform to ASTM B221 Alloy 6061-T6 and have a minimum section modulus equal to 0.0705 in.³ per bar, a depth of 1 1/2", spaced on 1 3/16" centers.
 Cross bars shall conform to ASTM B221 Alloy 6063-T5 or T-42 and spaced on 4" centers.

Details not shown same as Detail T. Alternate materials may be used subject to the Engineer's review and approval.

NUMBER	REVISION	DATE

- Drilling holes in grating may be done in shop or field, based on Contractor's preference and subject to accurate alignment.
- When truss grating must be spliced, use suggested detail or other methods subject to the Engineer's review and approval. Locate splice to avoid interference between cross bars and bolt locations.
- Tube to grating gap may vary from 0 to 1/2", max. to align walkway, allow for camber, etc.
- If Handrail Joint present, weld angle to WF(A-N)4 and 1/4" extension bars. (See Base Sheet OSC-A-8)
- L 1/8" x 1/2" x 2" welded to handrail posts to protect locations that contact grating.

Structure Number	Station	A	B	C	D
IC0991055R251.56	277+45	8 1/2"	4'-0"	7'-0"	11'-6"

SHT. 5-18 OF 27

REVISIONS	
NAME	DATE

ILLINOIS DEPARTMENT OF TRANSPORTATION
 FAI ROUTE 55 (I-80 TO U.S. 30)
 SIGNING
 WILL COUNTY

**CANTILEVER SIGN STRUCTURES
 WALKWAY DETAILS
 ALUMINUM TRUSS & STEEL POST**

SCALE: DRAWN BY: MDB
 DATE: 05/19/06 CHECKED BY: MJM

TENG
 TENG & ASSOCIATES, INC.
 ENGINEERS/ARCHITECTS/PLANNERS
 CHICAGO, ILLINOIS

PLOT DATE = 04/26/05 FILE NAME = #FILEL& USER NAME = MUSERN
 S:\DOCUMENTS\2005\10\STRUCT\CD\ASB07\0831.SHT
 GARCIAAZ
 5-17-2005, 14:28:37