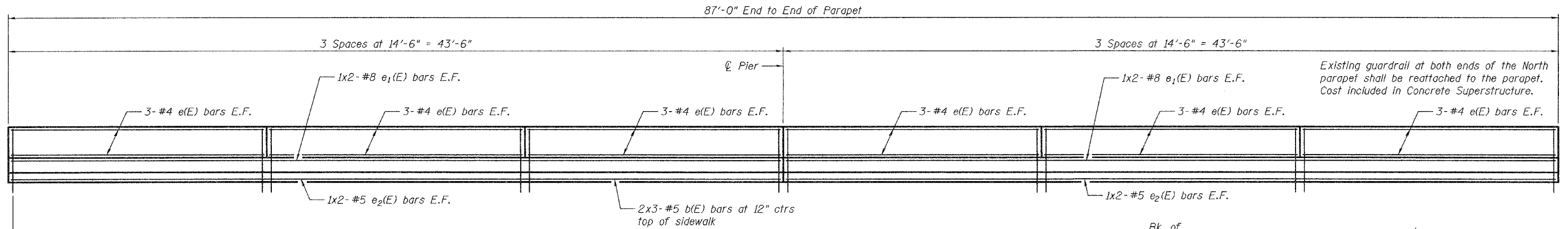


STATE OF ILLINOIS
DEPARTMENT OF TRANSPORTATION

ROUTE NO.	SECTION	COUNTY	SHEET NO.	SHEET NO.
		Lake	10	4
FED. ROAD DIST. NO. 7	ILLINOIS	FED. AID PROJECT-		4 SHEETS

Contract Number: 60B67

Existing name plate in North Parapet to be removed, cleaned, and re-installed in same location of new parapet. Cost included in Concrete Superstructure.



INSIDE PARAPET ELEVATION

- 88-#4 D₃(E) bars at 12" ctrs outside face North Parapet
- 88-#4 D₁(E) bars at 12" ctrs outside face South Parapet
- 96-#5 D(E) bars at 11" ctrs inside face North Parapet
- 96-#5 D₂(E) bars at 11" ctrs inside face South Parapet
- 88-#5 C(E) bars at 12" ctrs in sidewalk

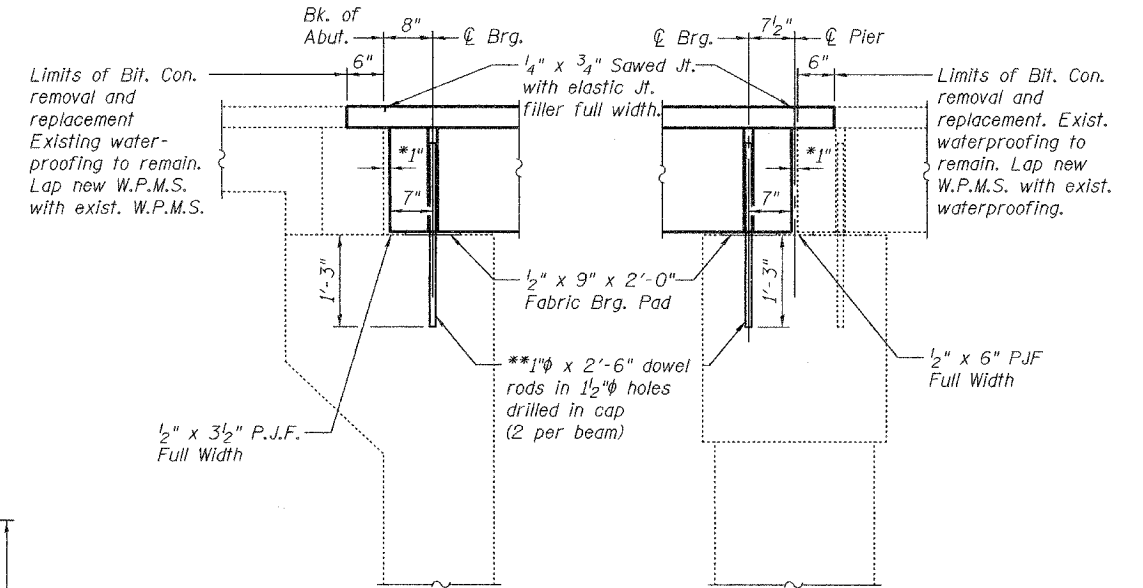
Existing reinforcement extending into the removal area shall be cleaned, straightened and incorporated into the new construction. Any reinforcement bars that are damaged during concrete removal shall be replaced with an approved bar splicer or anchorage system. Cost shall be included with Concrete Removal.

*1" Joint shall be filled with non-shrink grout. Dimension may vary to accommodate tolerance in beam lengths.

**Existing dowel rods are to be burned off, ground flush, and sealed with epoxy prior to placement of new beams. Cost included in Removal of Existing PPC Deck Beams. After beams have been erected holes shall be drilled into cap and dowel rods placed. Dowel holes shall be filled with non-shrink grout to top of beam and allowed to cure a minimum of 24 hours prior to grouting the shear keys.

Min. Bar Lap

- #5 = 2'-2"
- #8 = 4'-6"



TYPICAL SECTION AT ABUTMENTS

TYPICAL SECTION AT PIER

Non-staining gray one component non-sag elastomeric gun grade polyurethane sealant meeting the requirements of ASTM C-920, Type S, Grade NS, Class 25, Use T.

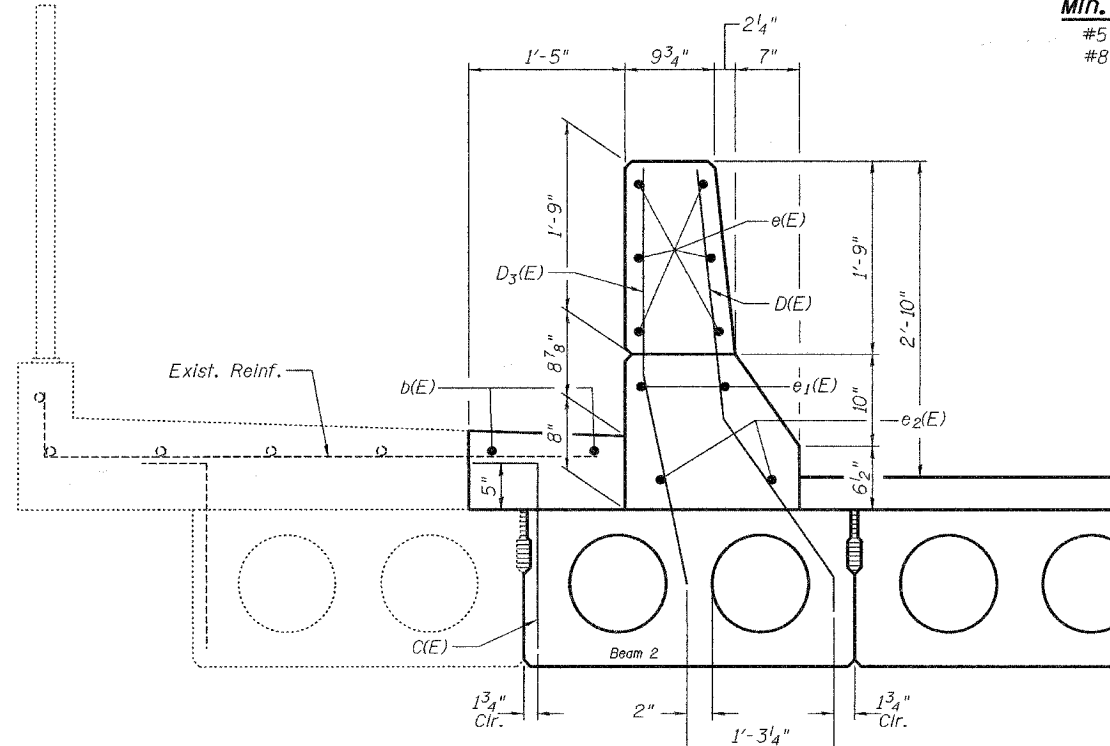
1/2" Preformed Self-Expanding Cork Joint Filler according to Article 1051.07 of the Std. Spec. Cost included with Concrete Superstructure.

Const. Jts. at Piers
1/8" Aluminum sheet ASTM B 209 alloy 3003-H14. Cost included with Concrete Superstructure

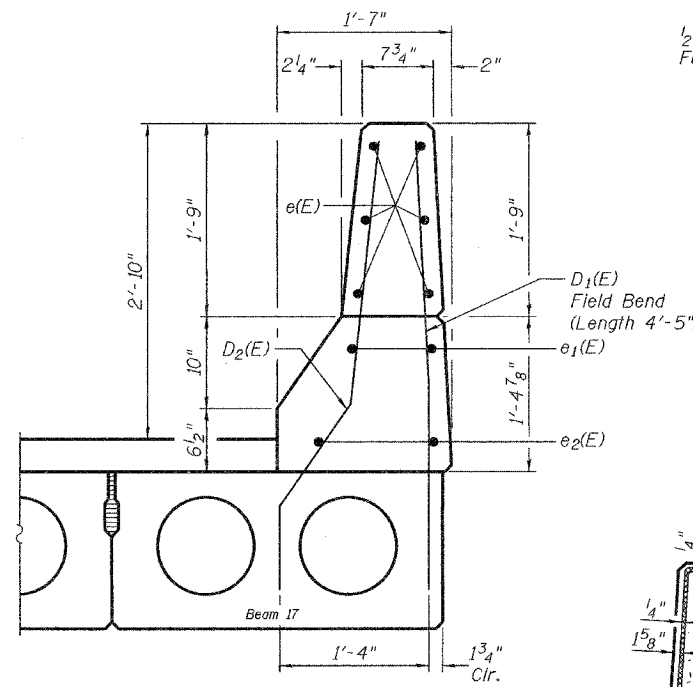
PARAPET AND JOINT DETAILS

IL. RT. 176 / U.S. 41
LAKE COUNTY
SN 049-0131

PARAPET JOINT DETAILS



NORTH SIDEWALK TYPICAL SECTION



SOUTH PARAPET TYPICAL SECTION

DESIGNED	P.S.J.
CHECKED	A.T.H.
DRAWN	Drew Christopher
CHECKED	P.S.J. A.T.H.

JUNE 26, 2006
EXAMINED *John A. Morris*
ENGINEER OF STRUCTURAL SERVICES
PASSED *Ralph E. Anderson*
ENGINEER OF BRIDGES AND STRUCTURES

See sheet 2 of 4 for bars, bar lists and quantities for parapet.