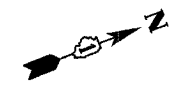
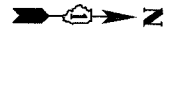
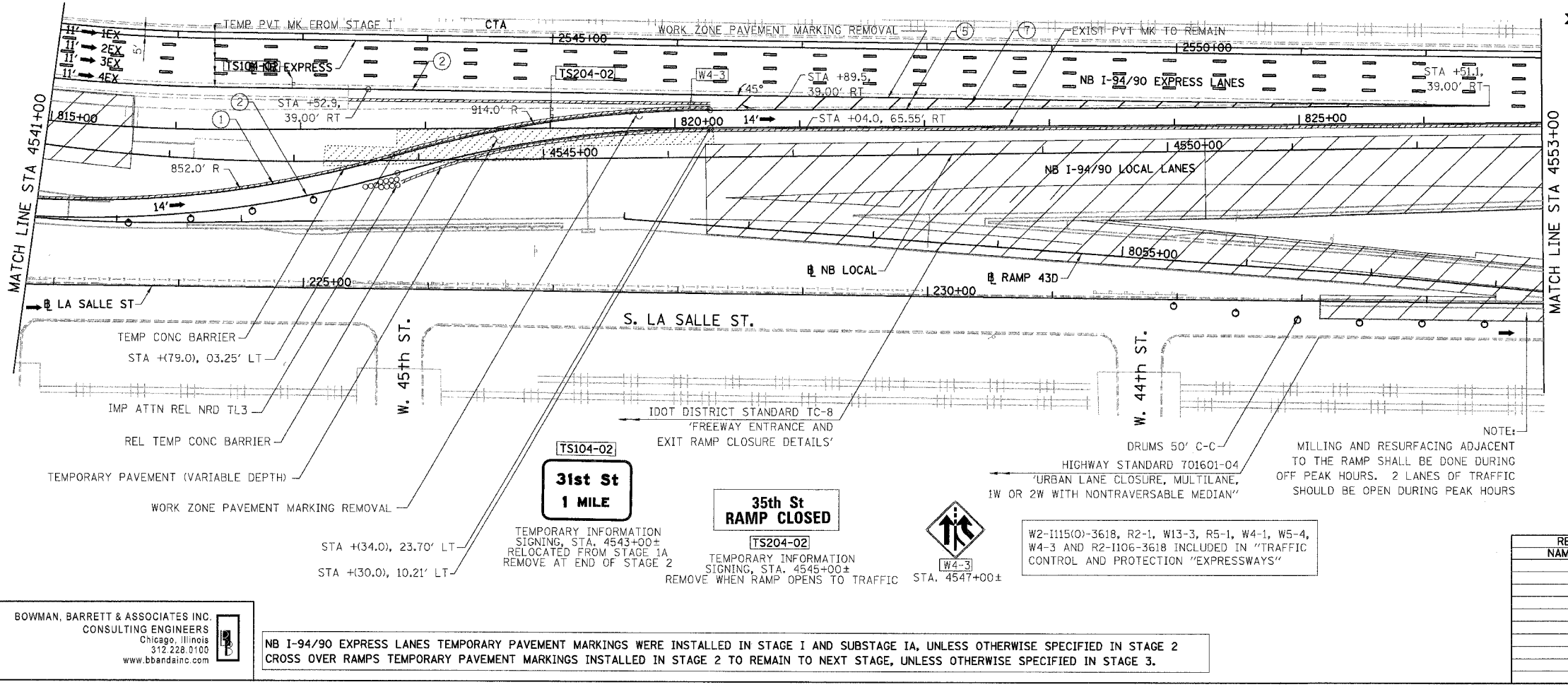
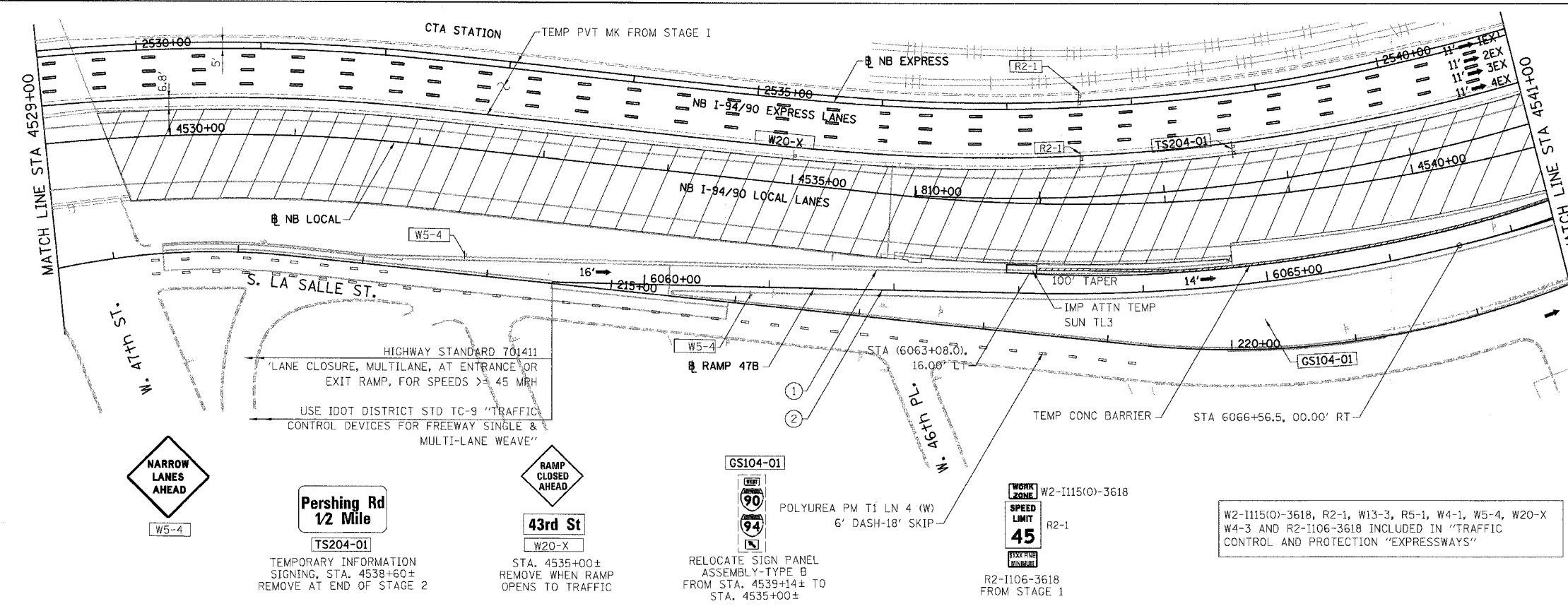


F.A.I.	SECTION	COUNTY	TOTAL SHEETS	SHEET NO.
94/90		COOK	565	96
STA.	TO STA.			
FED. ROAD DIST. NO.	ILLINOIS FED. AID PROJECT			
62301 *I2021-922 PT2 ETC 2324.6-1P1 R-10				



LEGEND:

- 1 → LANE NUMBER AND DIRECTION OF TRAFFIC
- ▨ WORK AREA
- ▨ TEMPORARY PAVEMENT
- ⊘ IMPACT ATTENUATORS, TEMPORARY (NON-REDIRECTIVE), TEST LEVEL 3
- ⊙ DRUM OR BARRICADE TYPE II WITH STEADY BURNING LIGHT
- ⊞ BARRICADE TYPE III
- ▨ TEMPORARY CONCRETE BARRIER
- ① LINE 4" (YELLOW EDGE)
- ② LINE 4" (WHITE EDGE)
- ③ LINE 4" (SKIP DASH, 6' SKIP - 2' DASH, WHITE)
- ④ LINE 5" (SKIP DASH, 30' SKIP - 10' DASH, WHITE)
- ⑤ LINE 8" (WHITE GORE LINE)
- ⑥ LINE 8" (SKIP DASH, 12' SKIP - 3' DASH, WHITE)
- ⑦ LINE 12" (DIAGONAL, 30' C-C, WHITE)
- ⑧ LETTERS AND SYMBOLS
- ES-XXX-XX EXISTING OVERHEAD OR CANTILEVER SIGNS
- GS-XXX-XX EXISTING POST MOUNTED SIGNS
- TS-XXX-XX TEMPORARY SIGNS
- +XX.XX STATION PROVIDED FROM THE ± SB I-90/94 EXPRESS LANES
- (+XX.XX) STATION PROVIDED FROM THE ± SB I-90/94 LOCAL LANES



- NOTES:**
- SEE SHEET MOTTS-01 FOR TYPICAL SECTIONS.
 - SEE TEMPORARY SIGN PANEL SHEETS FOR DETAILS.

REVISIONS	
NAME	DATE

ILLINOIS DEPARTMENT OF TRANSPORTATION
 F.A.I. 94/90 (DAN RYAN EXPRESSWAY)
 GARFIELD BLVD TO 31ST STREET (NB LOCAL LANES)
 SUGGESTED STAGES OF CONSTRUCTION
 AND TRAFFIC CONTROL
 STAGE 2

SCALE: 1"=50'
 DATE: 06/09/06

DRAWN BY: RA
 CHECKED BY: RS

BOWMAN, BARRETT & ASSOCIATES INC.
 CONSULTING ENGINEERS
 Chicago, Illinois
 312.228.0100
 www.bbainc.com

NB I-94/90 EXPRESS LANES TEMPORARY PAVEMENT MARKINGS WERE INSTALLED IN STAGE 1 AND SUBSTAGE IA, UNLESS OTHERWISE SPECIFIED IN STAGE 2
 CROSS OVER RAMP TEMPORARY PAVEMENT MARKINGS INSTALLED IN STAGE 2 TO REMAIN TO NEXT STAGE, UNLESS OTHERWISE SPECIFIED IN STAGE 3.

6/7/2006 14807.PW
 6/7/2006 14807.PW