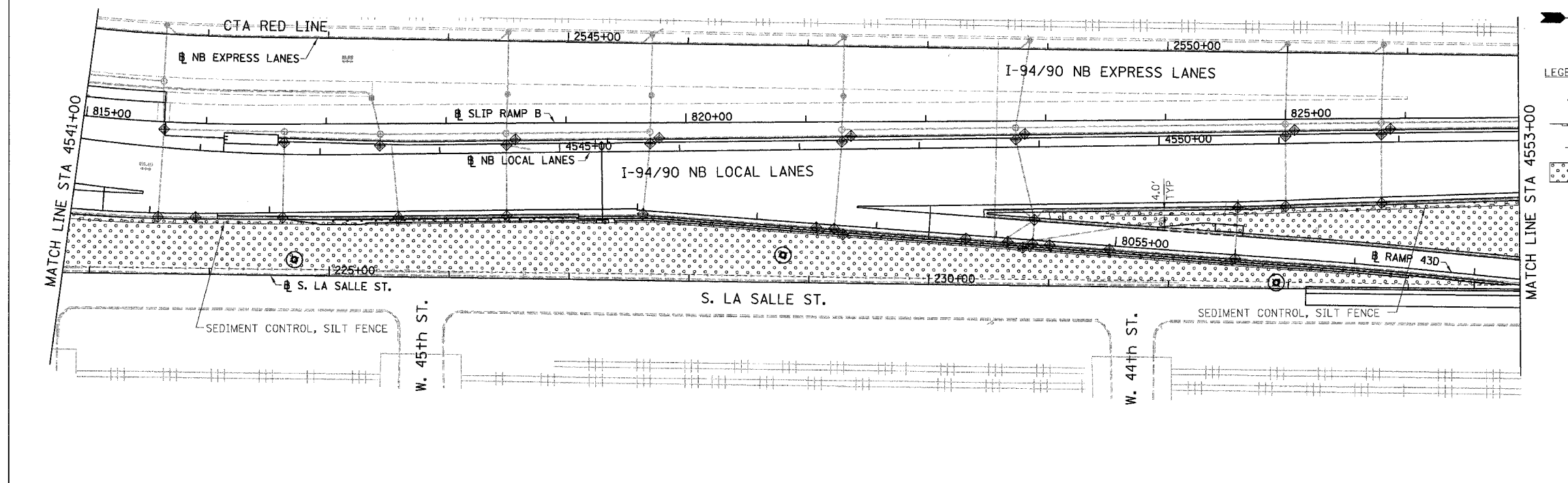
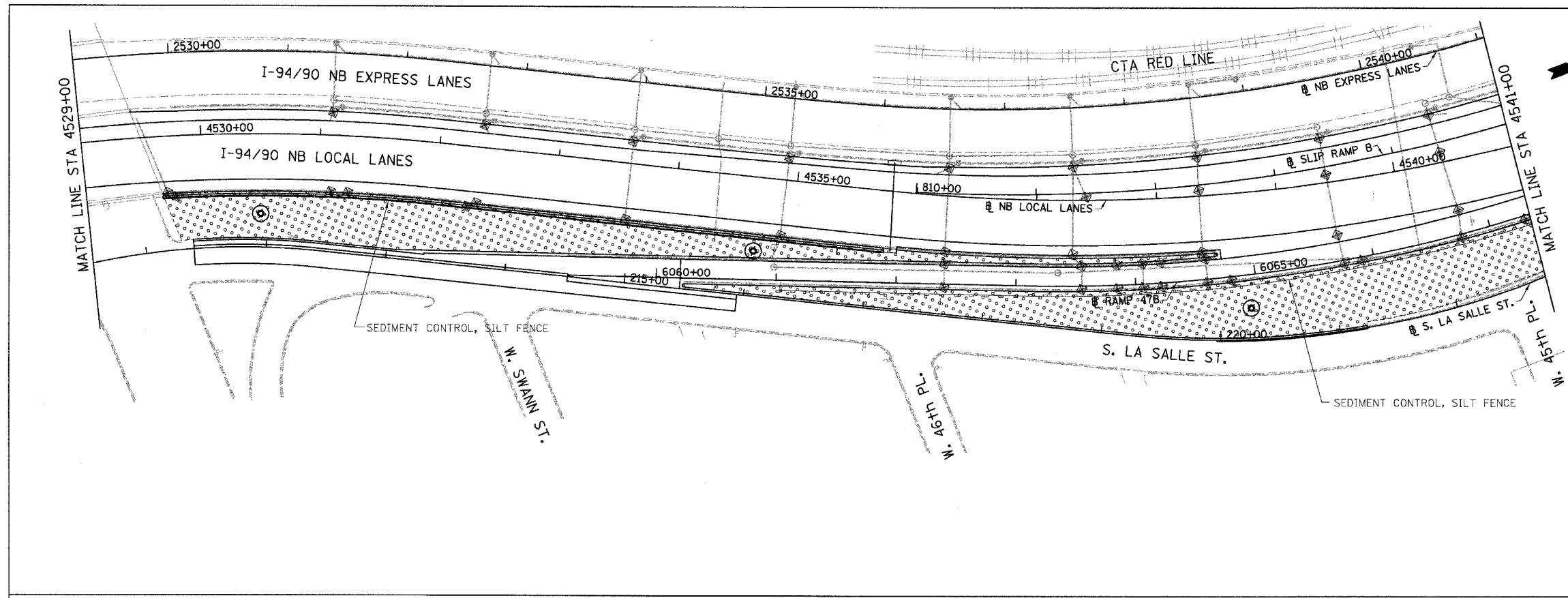
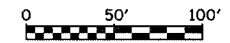


F.A.I.	SECTION	COUNTY	TOTAL SHEETS	SHEET NO.
94/90		COOK	565	126
STA.	TO STA.			
FED. ROAD DIST. NO.	ILLINOIS	FED. AID PROJECT		
62301	(2021-922 PT2 ETC 2324.6-1P) R-10			



LEGEND:

- INLET FILTER
- SEDIMENT CONTROL, SILT FENCE
- TEMPORARY DITCH CHECKS
- TEMPORARY EROSION CONTROL SEEDING



ERO-04

REVISIONS	NAME	DATE

ILLINOIS DEPARTMENT OF TRANSPORTATION
 F.A.I. 94/90 (DAN RYAN EXPRESSWAY)
 GARFIELD BLVD TO 31ST STREET (NB LOCAL LANES)
 EROSION CONTROL PLAN
 SCALE: 1"=50'
 DATE: 06/09/06
 DRAWN BY: RR
 CHECKED BY: RS

BOWMAN, BARRETT & ASSOCIATES INC.
 CONSULTING ENGINEERS
 Chicago, Illinois
 312.228.0100
 www.bbandinc.com

1/23/2006 12:33:56 PM
 R:\62301\94\90\NB\SHETS\6601\62301_126.dwg