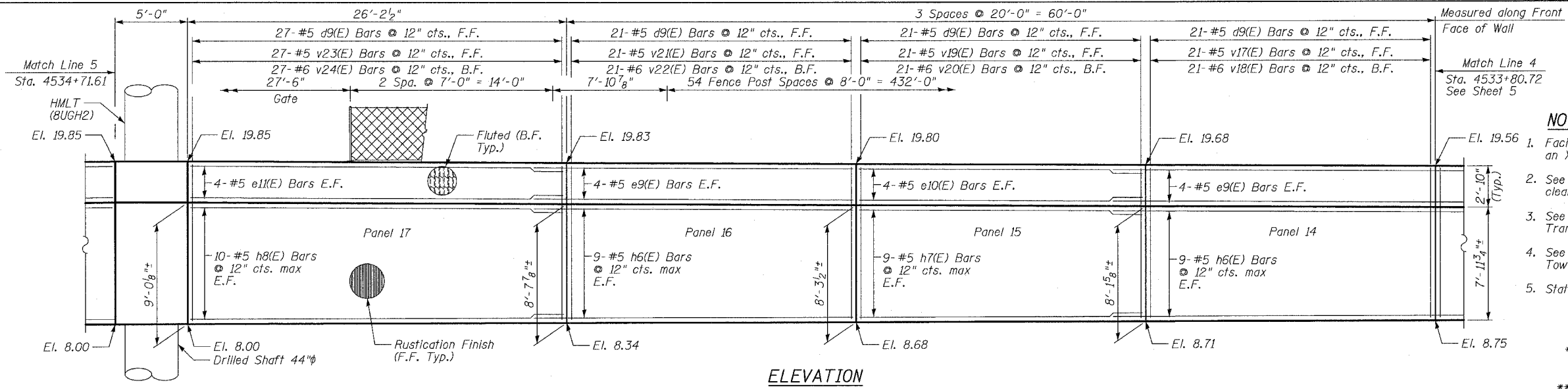
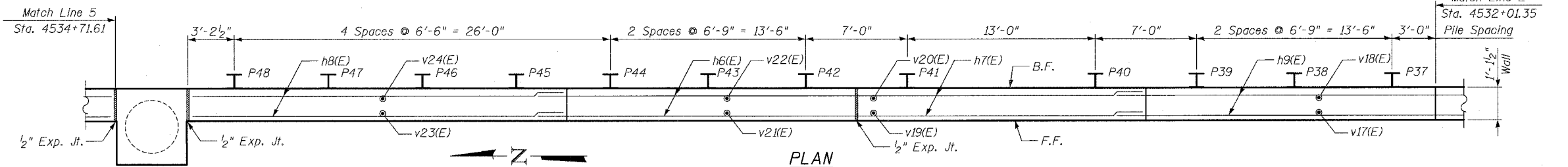


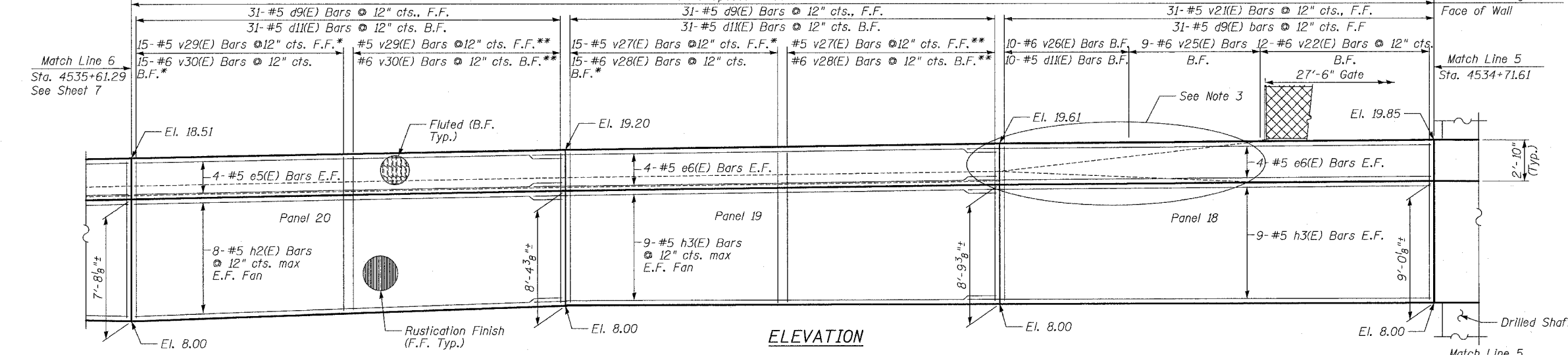
F.A.I.	SECTION	COUNTY	TOTAL SHEETS	SHEET NO.
94/90		COOK	565	378
STA.	TO STA.			
FED. ROAD DIST. NO.	ILLINOIS	FED. AID PROJECT		
62301	*12021-922	PT2 ETC 2324.6-1P1	R-10	



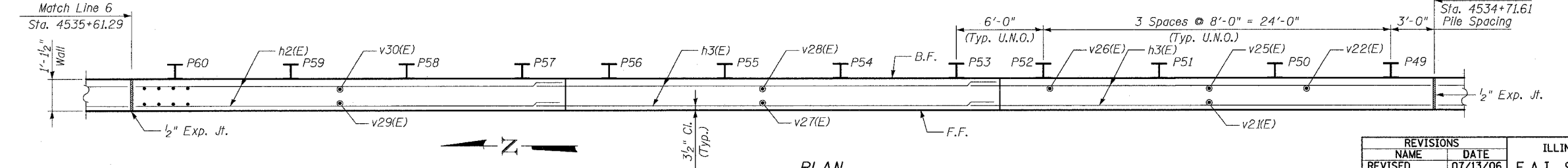
ELEVATION



PLAN



ELEVATION



PLAN

- NOTES:**
1. Facing in Plan Views is scaled 1:2 on an X:Y scale to show reinforcement.
  2. See details for reinforcing bar clearances.
  3. See Sheet 15 for Parapet Reinforcing Transition Detail.
  4. See Sheets 10 & 11 for High Mast Light Tower Details.
  5. Stationing is @ Northbound Local Lanes

\* Order bars full length and cut as indicated in cutting diagram.  
 \*\* Remaining Bars from Cutting Diagram

F.F. - denotes Front Face  
 B.F. - denotes Back Face  
 E.F. - denotes Each Face

**MIN BAR LAP**  
 #5 - 2'-2"  
 #6 - 2'-7"

SHEET 6 OF 24

REVISIONS	
NAME	DATE
REVISED	07/13/06

ILLINOIS DEPARTMENT OF TRANSPORTATION  
 F.A.I. 94/90 (DAN RYAN EXPRESSWAY)  
 GARFIELD BLVD TO 31ST STREET (NB LOCAL LANES)  
 COOK COUNTY  
 STA. 4529+75.90 TO STA. 4537+30.74  
 RETAINING WALL N-47N-R  
 S.N. 016-W977

SCALE: NTS  
 DATE: JUNE 9, 2006  
 DRAWN BY: MTR  
 CHECKED BY: BLU

BOWMAN, BARRETT & ASSOCIATES INC.  
 CONSULTING ENGINEERS  
 Chicago, Illinois  
 312.228.0100  
 www.bbainc.com

7/13/2006 4:56:40 PM