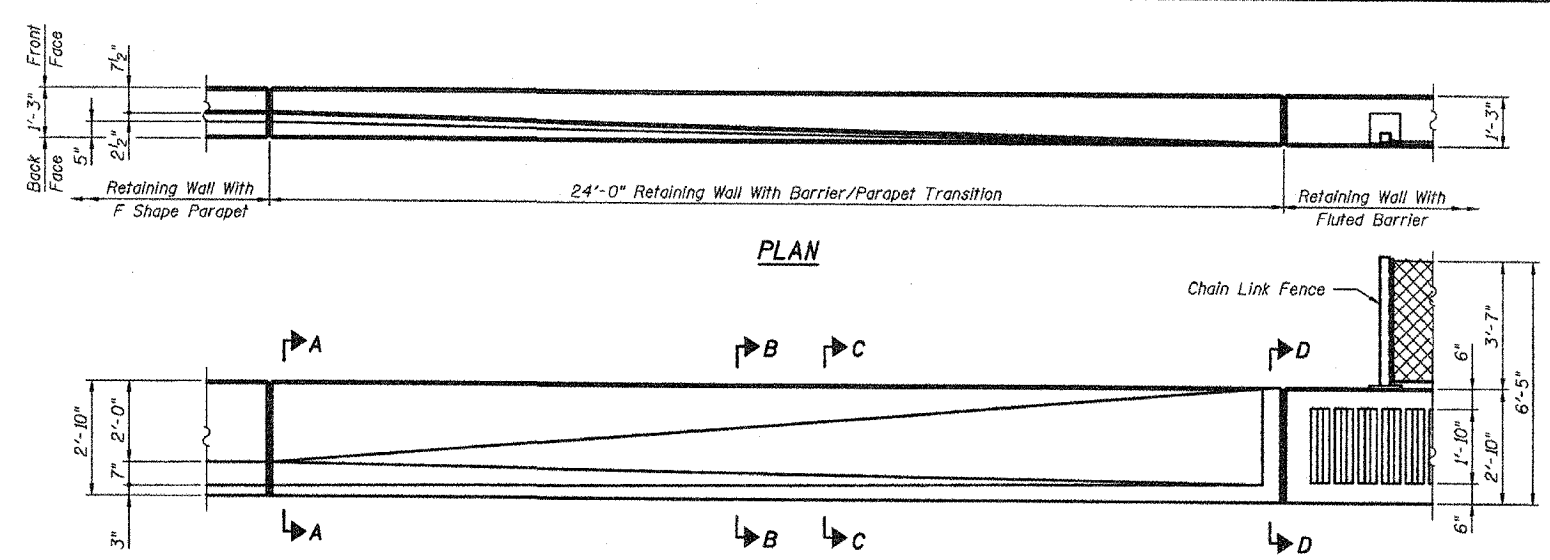


|                     |                                   |              |           |
|---------------------|-----------------------------------|--------------|-----------|
| F.A.I. SECTION      | COUNTY                            | TOTAL SHEETS | SHEET NO. |
| 94/90               | COOK                              | 565          | 412       |
| STA.                | TO STA.                           |              |           |
| FED. ROAD DIST. NO. | ILLINOIS FED. AID PROJECT         |              |           |
| 62301               | *2021-922 FT2 ETC 2324.6-1P) R-10 |              |           |



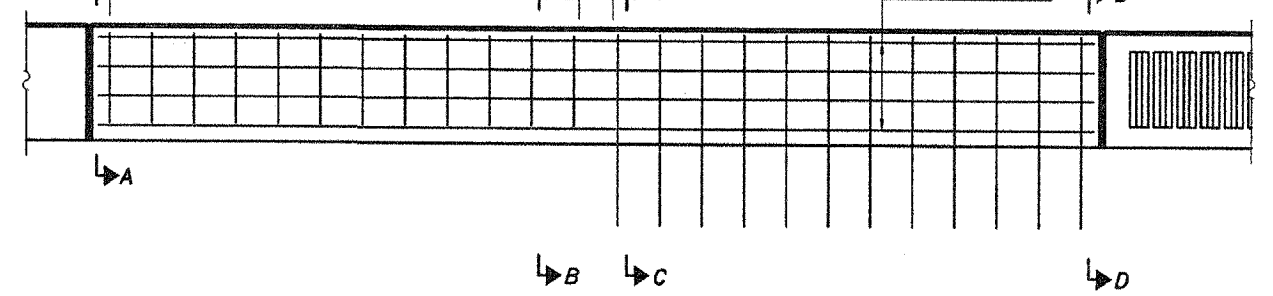
**BACK FACE ELEVATION - TRANSITIONS**

For Configuration and Reinf. of F Shape Parapet See Section A-A

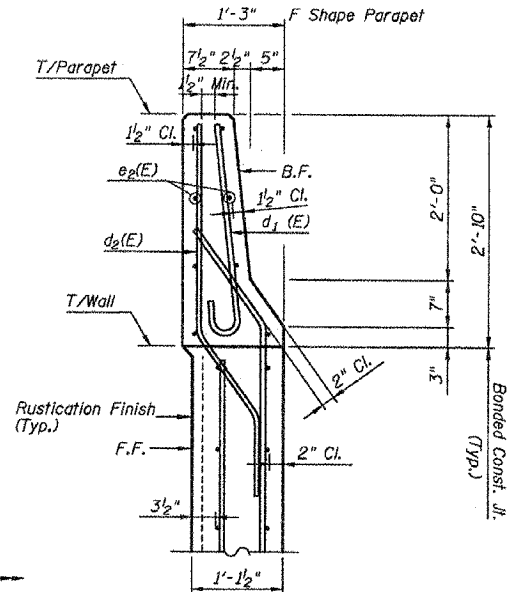
12-#6 d1(E) Bars at 12" cts. B.F., Match #6 v9(E) Bars

12-#6 d3(E) Bars at 12" cts. B.F., Match #5 v13(E) Bars

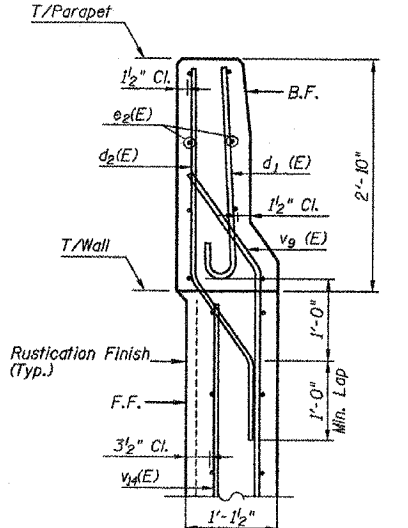
For Configuration and Reinf. of Fluted Barrier See Section D-D



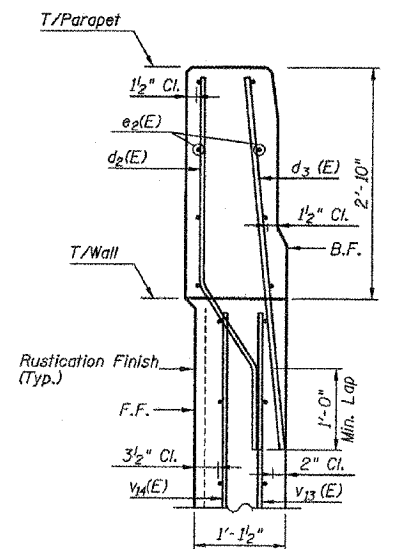
**BACK FACE ELEVATION - REINFORCEMENT**  
(d2(E) and v(E) bars not shown for clarity)



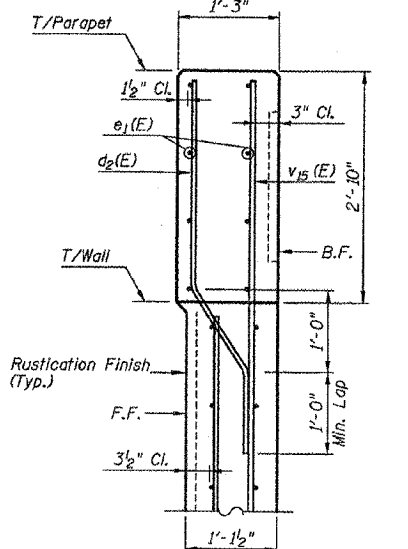
**SECTION A-A**



**SECTION B-B**



**SECTION C-C**



**SECTION D-D**

**NOTES:**  
1. For Bill of Bars & Bar Bend Details, See Sheet 5.

| REVISIONS |          |
|-----------|----------|
| NAME      | DATE     |
| REVISED   | 06/20/06 |
|           |          |
|           |          |
|           |          |
|           |          |
|           |          |
|           |          |
|           |          |
|           |          |

SHEET 7 OF 9

ILLINOIS DEPARTMENT OF TRANSPORTATION  
F.A.I. 94/90 (DAN RYAN EXPRESSWAY)  
GARFIELD BLVD TO 31ST STREET (NB LOCAL LANES)

RETAINING WALL N-43S-R  
PARAPET TRANSITION

SCALE: NTS  
DATE: JUNE 9, 2006

DRAWN BY: MTR  
CHECKED BY: BLU

BOWMAN, BARRETT & ASSOCIATES INC.  
CONSULTING ENGINEERS  
Chicago, Illinois  
312.228.0100  
www.bbainc.com