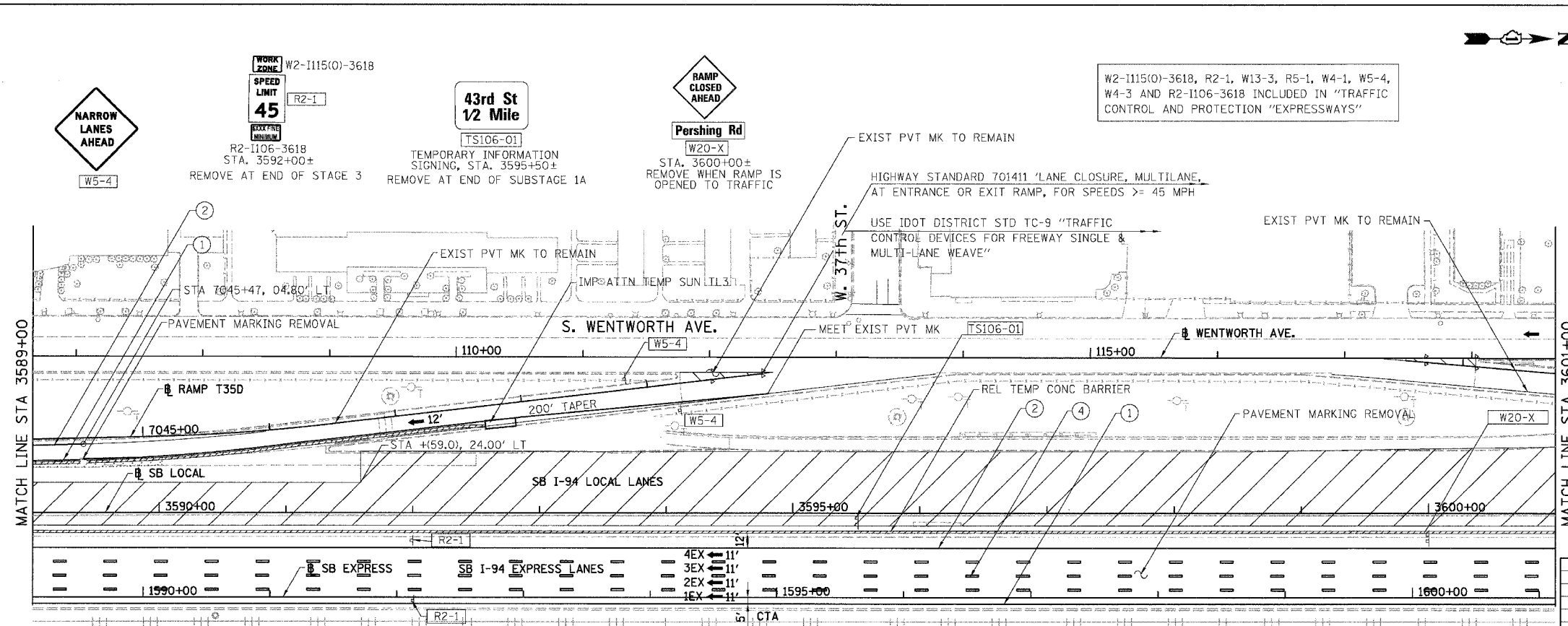
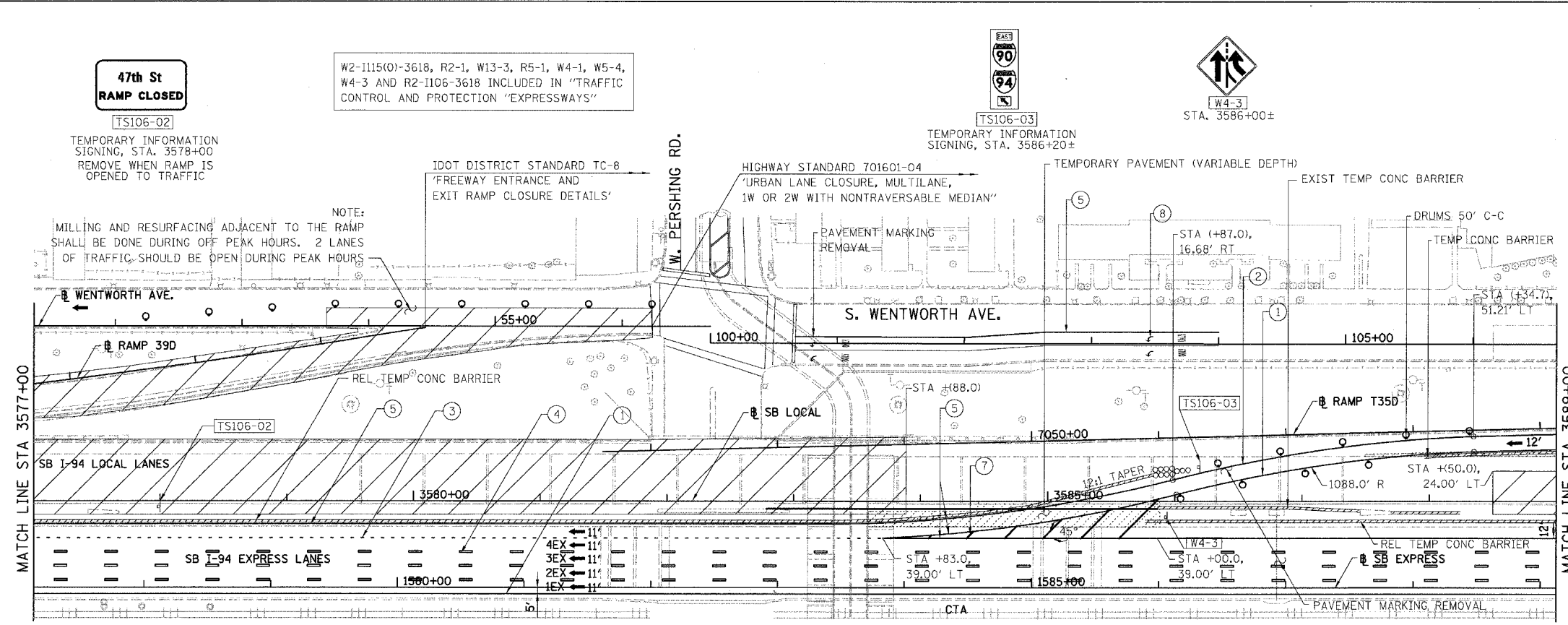
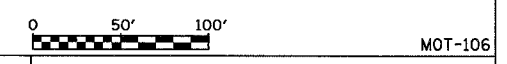


F.A.I.	SECTION	COUNTY	TOTAL SHEETS	SHEET NO.
94/90	*	COOK	588	89
STA.	TO STA.			
FED. ROAD DIST. NO.	ILLINOIS	FED. AID PROJECT		
62303 • (2021-922 PT2 ETC 2324.6-1P) R-11				



- LEGEND:**
- 1 → LANE NUMBER AND DIRECTION OF TRAFFIC
 - [Hatched Box] WORK AREA
 - [Dashed Box] TEMPORARY PAVEMENT
 - [Symbol] IMPACT ATTENUATORS, TEMPORARY (NON-REDIRECTIVE), TEST LEVEL 3
 - [Symbol] DRUM OR BARRICADE TYPE II WITH STEADY BURNING LIGHT
 - [Symbol] BARRICADE TYPE III
 - [Symbol] TEMPORARY CONCRETE BARRIER
 - ① LINE 4" (YELLOW EDGE)
 - ② LINE 4" (WHITE EDGE)
 - ③ LINE 4" (SKIP DASH, 6' SKIP - 2' DASH, WHITE)
 - ④ LINE 5" (SKIP DASH, 30' SKIP - 10' DASH, WHITE)
 - ⑤ LINE 8" (WHITE GORE LINE)
 - ⑥ LINE 8" (SKIP DASH, 12' SKIP - 3' DASH, WHITE)
 - ⑦ LINE 12" (DIAGONAL, 30' C-C, WHITE)
 - ⑧ LETTERS AND SYMBOLS
 - [ES-XXX-XX] EXISTING OVERHEAD OR CANTILEVER SIGNS
 - [GS-XXX-XX] EXISTING POST MOUNTED SIGNS
 - [TS-XXX-XX] TEMPORARY SIGNS
 - +XX.XX STATION PROVIDED FROM THE ± SB I-90/94 EXPRESS LANES
 - (+XX.XX) STATION PROVIDED FROM THE ± SB I-90/94 LOCAL LANES



REVISIONS		ILLINOIS DEPARTMENT OF TRANSPORTATION F.A.I. 94/90 (DAN RYAN EXPRESSWAY) GARFIELD BLVD TO 31ST STREET (SB LOCAL LANES) SUGGESTED STAGES OF CONSTRUCTION AND TRAFFIC CONTROL STAGE I
NAME	DATE	
		SCALE: 1"=50'
		DATE: 06/09/06
		DRAWN BY: RA
		CHECKED BY: RS

BOWMAN, BARRETT & ASSOCIATES INC.
CONSULTING ENGINEERS
Chicago, Illinois
312.228.0100
www.bbainc.com

SB I-94/90 EXPRESS LANES TEMPORARY PAVEMENT MARKINGS INSTALLED IN STAGE I TO REMAIN TO END OF STAGE 3, UNLESS OTHERWISE SPECIFIED IN SUBSTAGE IA.

6/8/2006