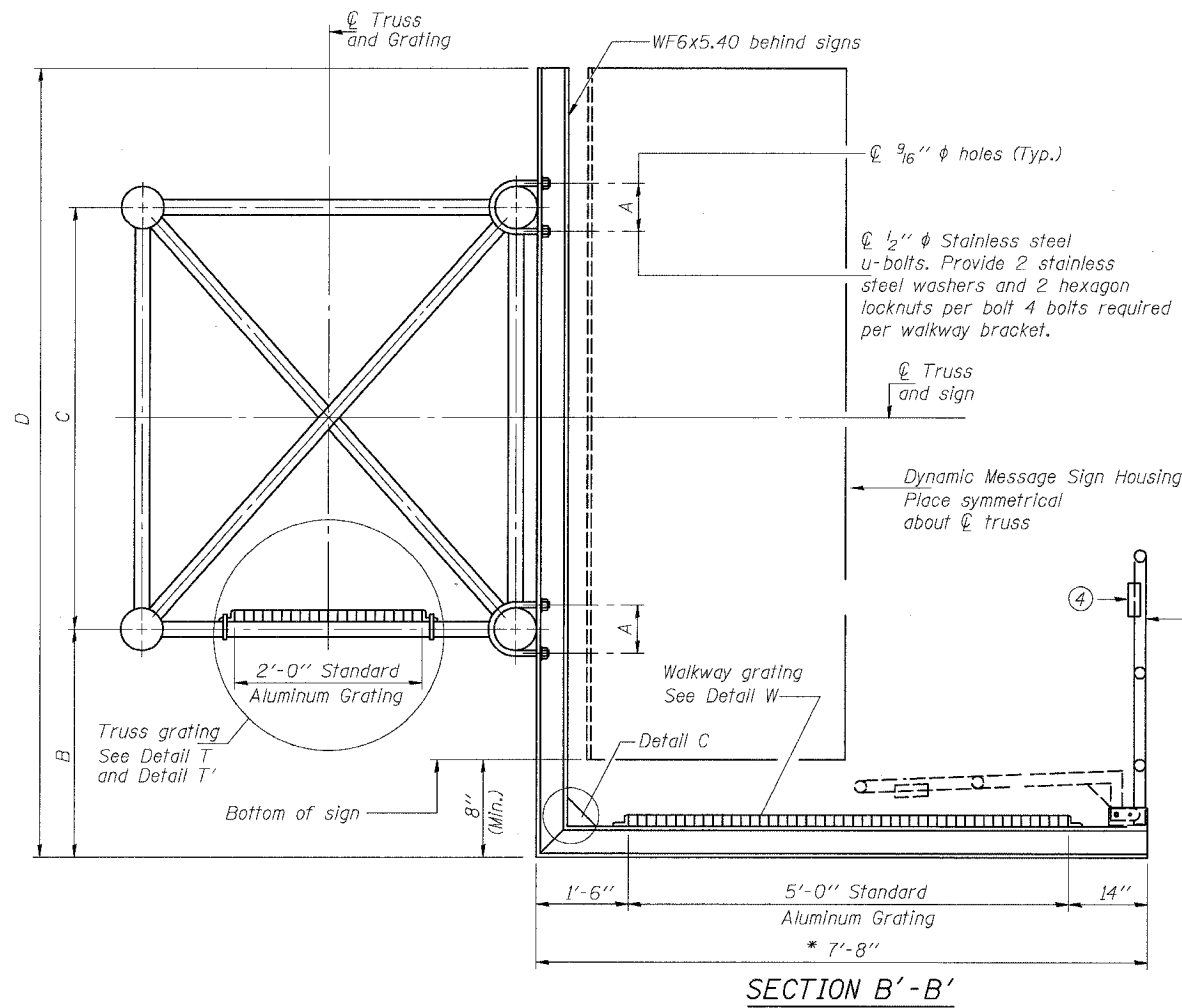


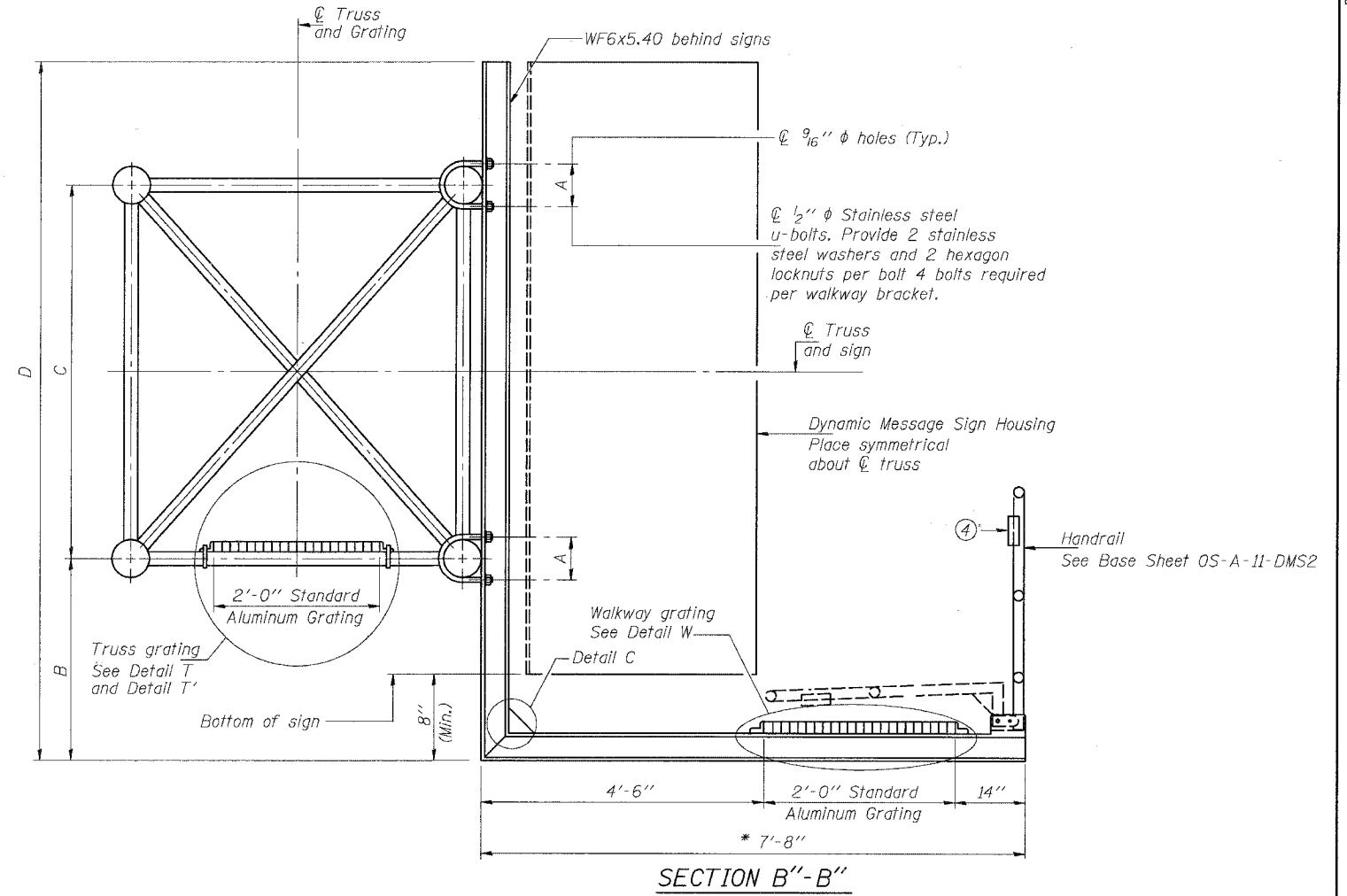
STATE OF ILLINOIS
DEPARTMENT OF TRANSPORTATION

ROUTE NO.	SECTION	COUNTY	TOTAL SHEETS	SHEET NO.
F.A.I. RTE. 90/94	*	COOK	588	280
FED. ROAD DIST. NO. 1	ILLINOIS	FED. AID PROJECT-		

* 62303 (2021-922 PT2 ETC 2324.6-1P) R-11



SECTION B'-B'



SECTION B''-B''

* Bracket and grating dimensions are nominal and will vary based on actual DMS cabinet dimensions plus manufacturer's mounting devices, and providing clearance between the lowered handrail and DMS cabinet.

Note:

For dimensions "A" to "D" and remaining details, see sheet OS-A-10-DMS2

DESIGNED	MSA	20
CHECKED	AS/AC	EXAMINED
DRAWN	RV	PASSED
CHECKED	MSA	ENGINEER OF STRUCTURAL SERVICES
		ENGINEER OF BRIDGES AND STRUCTURES

NUMBER	REVISION	DATE

OS-A-10a-DMS2 7/1/2001

OVERHEAD SIGN STRUCTURES
ALTERNATE ALUMINUM WALKWAY DETAILS

ILLINOIS DEPARTMENT OF TRANSPORTATION
F.A.I. 94/90 (DAN RYAN EXPRESSWAY)

GARFIELD BLVD TO 31st STREET (SB LOCAL LANES)

OVERHEAD SIGN STRUCTURES
(SPAN)

SGN-30

6/8/2006 12:25:38 PM