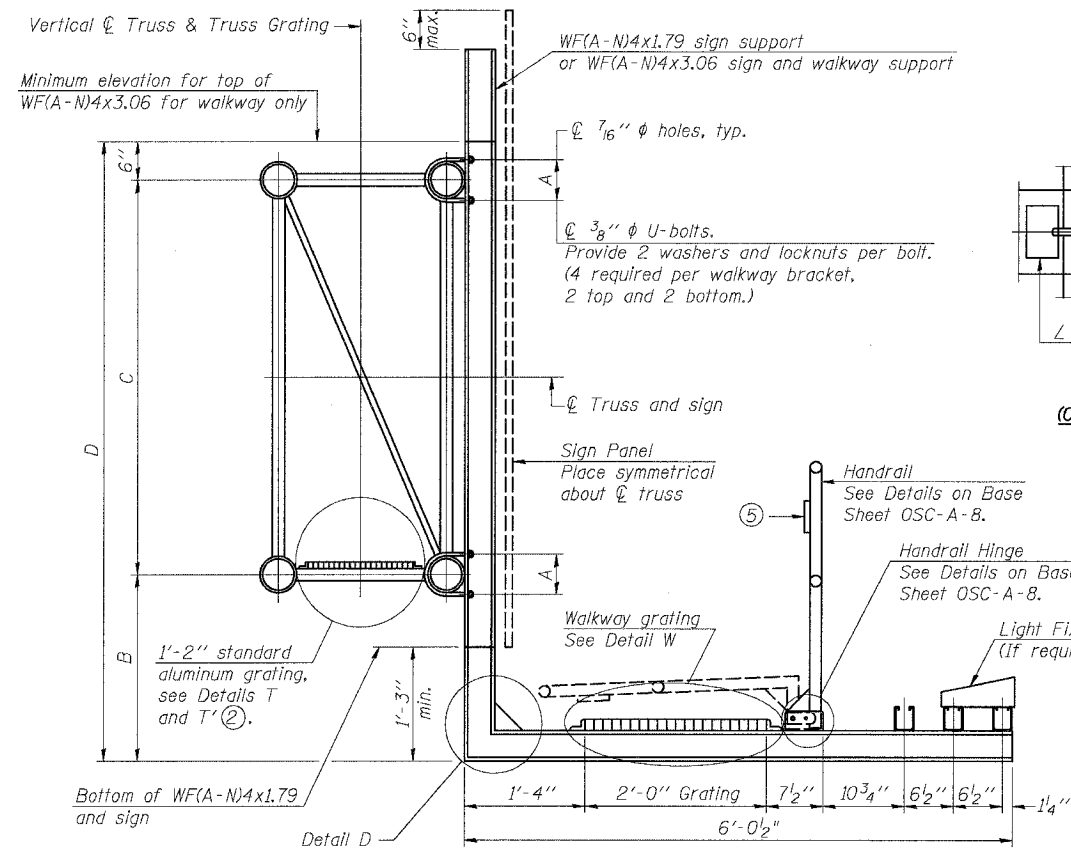


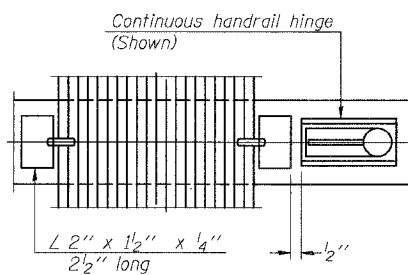
STATE OF ILLINOIS
DEPARTMENT OF TRANSPORTATION

ROUTE NO.	SECTION	COUNTY	SHEET	SHEET
94/90	*	COOK	588	294
FED. ROAD DIST. NO. 1		ILLINOIS	FED. AID PROJECT-	

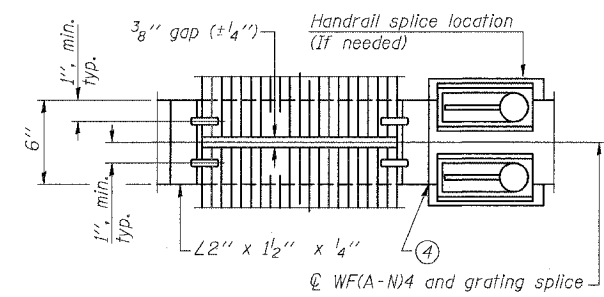
* 62303 (2021-922 PT2 ETC 2324.6-1P) R-11



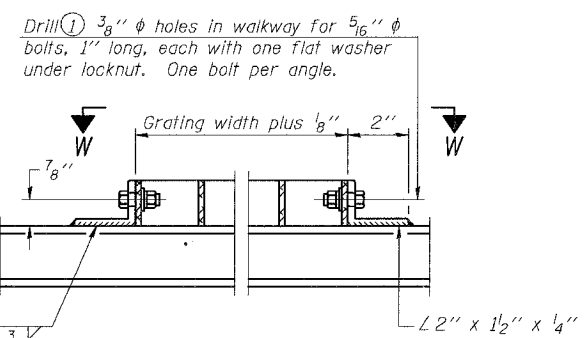
SECTION B-B



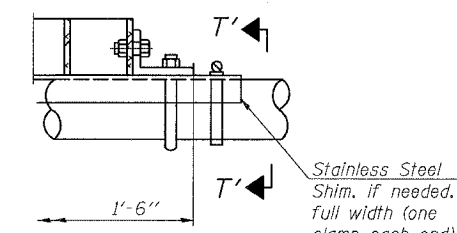
(CONTINUOUS WALKWAY GRATING)



SECTION W-W (AT WALKWAY GRATING SPLICE)

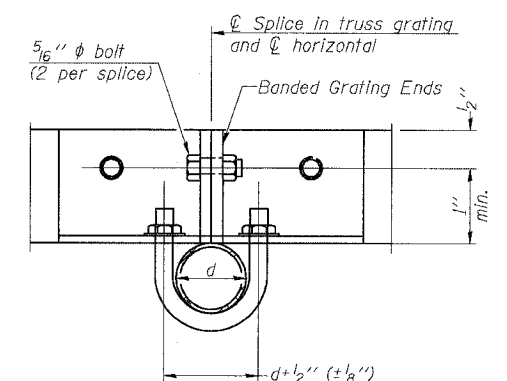


DETAIL W (Walkway grating)

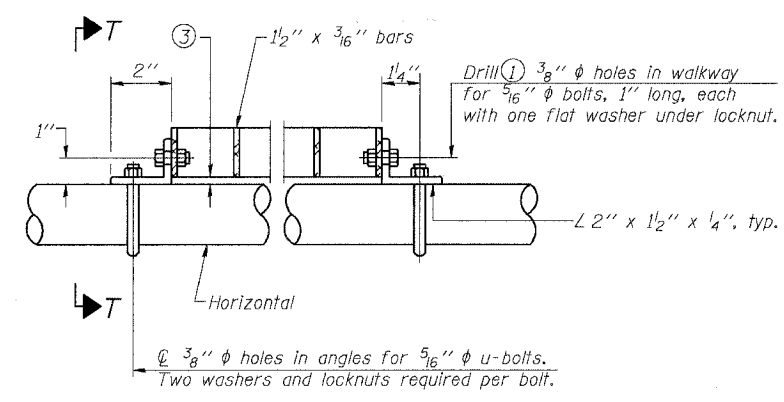


DETAIL T' (Truss grating splice)

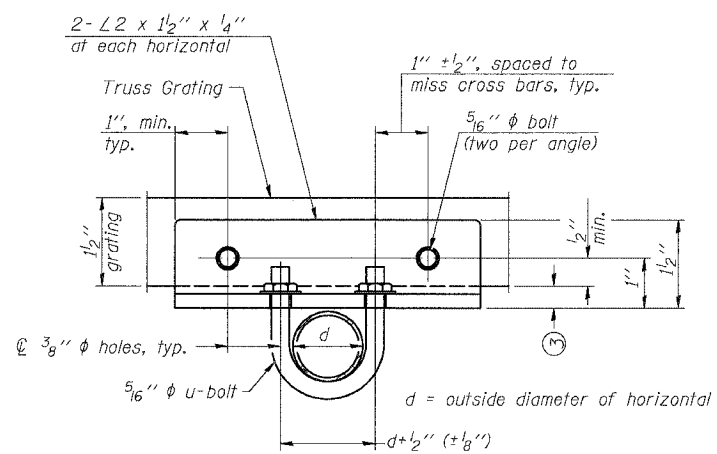
Details not shown same as Detail T. Alternate materials may be used subject to the Engineer's review and approval.



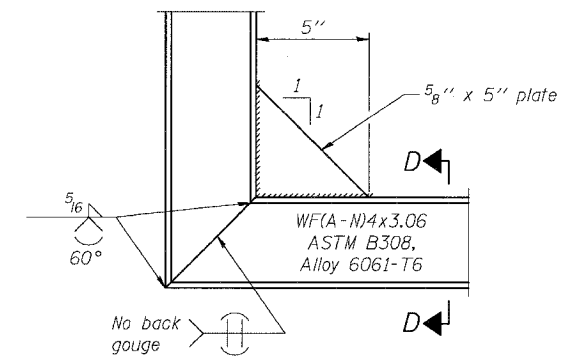
SECTION T'-T'



DETAIL T (Truss grating at horizontal)

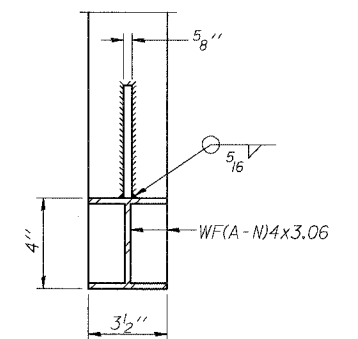


SECTION T-T



DETAIL D

(See Detail P, Base Sheet OSC-A-8.)



SECTION D-D

NUMBER	REVISION	DATE

DESIGNED	MSA	EXAMINED	20
CHECKED	AS	PASSED	ENGINEER OF STRUCTURAL SERVICES
DRAWN	RV		ENGINEER OF BRIDGES AND STRUCTURES
CHECKED	MSA		

OSC-A-7 1-7-05

- Drilling holes in grating may be done in shop or field, based on Contractor's preference and subject to accurate alignment.
- When truss grating must be spliced, use suggested detail or other methods subject to the Engineer's review and approval. Locate splice to avoid interference between cross bars and bolt locations.
- Tube to grating gap may vary from 0 to *", max. to align walkway, allow for camber, etc.
- If Handrail Joint present, weld angle to WF(A-N)4 and *" extension bars. (See Base Sheet OSC-A-8)
- *" x *" x 2" welded to handrail posts to protect locations that contact grating.

Structure Number	Station	A	B	C	D
1C0161094R055.20	3609+65	7"	3'-3"	5'-6"	9'-3"

SGN-44
CANTILEVER SIGN STRUCTURES
WALKWAY DETAILS
ALUMINUM TRUSS & STEEL POST
ILLINOIS DEPARTMENT OF TRANSPORTATION
F.A.I. 94/90 (DAN RYAN EXPRESSWAY)
GARFIELD BLVD TO 31st STREET (SB LOCAL LANES)
OVERHEAD SIGN STRUCTURES
(CANTILEVER)