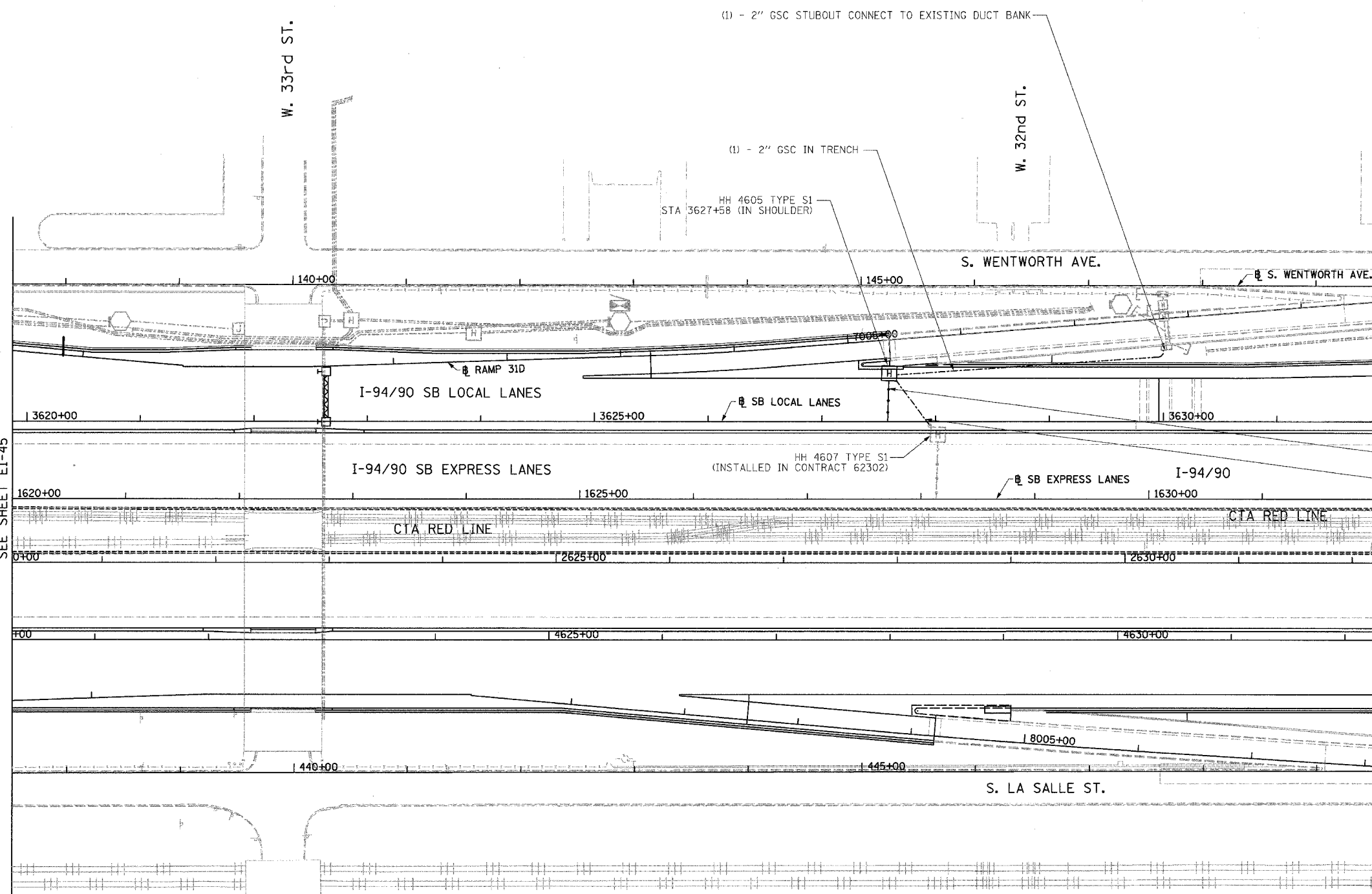


F.A.I.	SECTION	COUNTY	TOTAL SHEETS	SHEET NO.
94/90	*	COOK	588	331
STA. 1620+00		TO STA. 1632+00		
FED. ROAD DIST. NO.	ILLINOIS	FED. AID PROJECT		
62303	*	(2021-922 PT2 ETC 2324.6-1P) R-11		



MATCH LINE STA. 1620+00
SEE SHEET EI-45

MATCH LINE STA. 1632+00
SEE SHEET EI-47

(1) - 42' - 3" PVC CONCRETE ENCASED
(1) - 2" GSC IN TRENCH CONNECT TO EXISTING STUBOUT AT ELEV. = -3.70

- NOTES:**
1. SEE DRAWINGS EI-100 AND EI-101 FOR ELECTRICAL SYMBOLS AND ABBREVIATIONS.
 2. SEE DRAWINGS EI-102, EI-103, AND EI-104 FOR TYPICAL HANDHOLE INSTALLATION DETAILS
 3. TRENCHED CONDUITS INSTALLED IN PARALLEL ARE TO BE INSTALLED IN COMMON TRENCH.
 4. THIS CONTRACT IS RESPONSIBLE FOR PROPOSED ITEMS THAT ARE LABELED. UNLABELLED ITEMS ARE THE RESPONSIBILITY OF CONTRACT 62583. ALL WORK MUST BE COORDINATED BY BOTH CONTRACTS.



EI-46

BOWMAN, BARRETT & ASSOCIATES INC.
CONSULTING ENGINEERS
Chicago, Illinois
312.228.0100
www.bbainc.com

REVISIONS	
NAME	DATE

ILLINOIS DEPARTMENT OF TRANSPORTATION
F.A.I. 94/90 (DAN RYAN EXPRESSWAY)
59TH STREET TO 31ST STREET (SB LOCAL LANES)
ELECTRICAL INFRASTRUCTURE PLANS

SCALE: 1"=50'
DATE: 06/09/06

DRAWN BY: JDC
CHECKED BY: RS

11/11/2006 11:47:24 AM