

F.A.I. RTE.	SECTION	COUNTY	TOTAL SHEETS	SHEET NO.
90/94	*	COOK	588	333
STA.		TO STA.		
62303		* (2021-922 PT2 ETC 2324.6-1P) R-11		

ELECTRICAL SYMBOLS FOR PROPOSED WORK

GENERAL ELECTRICAL CALLOUTS

- LIGHT TOWER FOUNDATION
NUMBER INSIDE HEXAGON INDICATES TOWER TYPE
HANDHOLE LOCATION AS INDICATED
TOWER INSTALLED BY OTHERS,
UNDER A SEPARATE CONTRACT

TYPE	TOWER HEIGHT
10	100 FEET
11	110 FEET
12	120 FEET

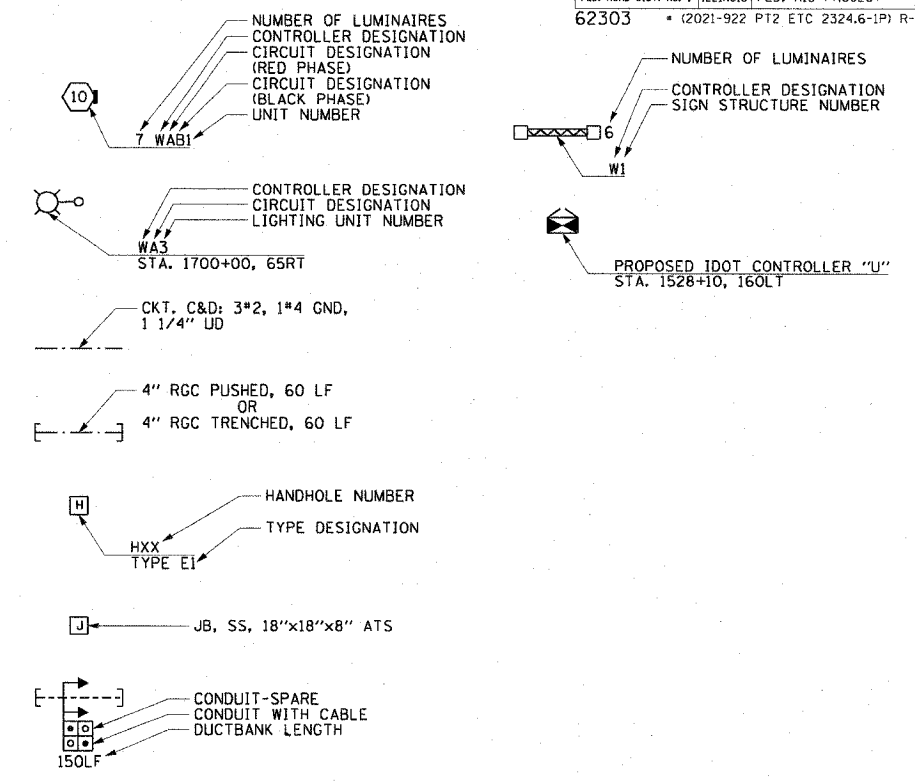
- LIGHT POLE FOUNDATION
POLE INSTALLED BY OTHERS
UNDER A SEPARATE CONTRACT
- TEMPORARY LIGHTING UNIT INCLUDING 60 FOOT
WOOD POLE (CLASS 4), 8'-0" MAST ARM WITH
400 WATT HPS LUMINAIRE
- ELECTRIC HANDHOLE; TYPE AS INDICATED

 - TYPE E1: PC CONCRETE, 21.5"x21.5"x30"
IDOT STANDARD 814001
 - TYPE E2: PC CONCRETE-HEAVY DUTY, 22"x22"x30",
IDOT STANDARD 814001
 - TYPE C1: COMMUNICATIONS VAULT
 - TYPE S1: PC CONCRETE-HEAVY DUTY, 22"x22"x36"
 - TYPE S2: PC CONCRETE-HEAVY DUTY SPECIAL,
30"x30"x36"

- JUNCTION BOX: TYPE AND SIZE AS INDICATED
ON PLANS
- PULL BOX: TYPE AND SIZE AS INDICATED
ON PLANS
- TELEPHONE CONNECTION
- FIBER OPTIC COMMUNICATIONS HUT
- LIGHTED SIGN STRUCTURE-CANTILEVER TYPE
(NUMBER OF FLUORESCENT FIXTURES AS
INDICATED WITH ASSOCIATED DISCONNECT
SWITCH - TYP.) (N.I.C.)

- LIGHTED SIGN STRUCTURE-TRUSS TYPE
- TEMPORARY LIGHTED SIGN STRUCTURE-TRUSS
TYPE, QUANTITY OF LUMINAIRES AS SHOWN
ON SIGNING PLANS
- LIGHTED SIGN STRUCTURE-BRIDGE MOUNT TYPE
- DYNAMIC MESSAGE SIGN
- FLASHING BEACON SIGN
- CLOSED CIRCUIT TELEVISION CAMERA
- MICROWAVE DETECTOR
- DETECTOR LOOP
- CONTROLLER CABINET FOUNDATION
- CONTROLLER CABINET FOUNDATION; SURVEILLANCE
- CONTROLLER CABINET FOUNDATION; SURVEILLANCE,
TYPE 334
- RAMP METER SIGNAL POLE/HEAD FOUNDATION
- RAMP METER FLASHER FOUNDATION
- TEMPORARY WOOD POLE, 50 FOOT LENGTH
(10 FOOT BURIED, 40 FOOT INSTALLED HEIGHT)
- HIGHWAY ADVISORY RADIO ANTENNA
- ELECTRIC UTILITY POLE
- CCTV CAMERA POLE
- PULLING PEDESTAL

- POLE MOUNTED ELECTRIC UTILITY TRANSFORMER(S)
- PAD MOUNTED ELECTRIC UTILITY TRANSFORMER
- GROUND ROD
- MAIN SERVICE FUSED DISCONNECT SWITCH
(RATING AS INDICATED)
- EXISTING RACEWAY OR CONDUIT RUN
AS INDICATED ON PLANS
- RACEWAY EMBEDDED IN STRUCTURE
- RACEWAY OR DIRECT BURIAL CABLE
UNDERGROUND WITHOUT ENCASEMENT
- RIGID GALVANIZED STEEL CONDUIT
SLEEVE, TRENCHED OR PUSHED
- UNDERGROUND REINFORCED CONCRETE ENCASED
DUCTBANK, UNO. (NUMBER, TYPE, AND SIZE OF
DUCTS AS SHOWN)
- RACEWAY OR CONDUIT IN TRENCH, TYPE AS
INDICATED ON PLANS
- AERIAL CABLE, TYPE AS INDICATED ON PLANS
- CONDUIT TURNED DOWN
- CONDUIT TURNED UP



ELECTRICAL SYMBOLS FOR EXISTING CONDITIONS

- EXISTING LIGHTING UNIT, TWIN LUMINAIRE
- EXISTING LIGHTING UNIT
- EXISTING TEMPORARY LIGHTING UNIT
- EXISTING CDOT LIGHTING UNIT
- EXISTING UNDERPASS LUMINAIRE
- EXISTING ELECTRIC HANDHOLE
- EXISTING JUNCTION BOX
- EXISTING PULL BOX
- EXISTING TELEPHONE CONNECTION
- EXISTING FIBER OPTIC COMMUNICATIONS HUT
- EXISTING ELECTRIC HANDHOLE/MANHOLE

- EXISTING CDOT ELECTRIC HANDHOLE/MANHOLE
- EXISTING LIGHTED SIGN STRUCTURE-
CANTILEVER TYPE
- EXISTING LIGHTED SIGN STRUCTURE-TRUSS TYPE
- EXISTING LIGHTED SIGN STRUCTURE-
BRIDGE MOUNT TYPE
- EXISTING DYNAMIC MESSAGE SIGN
- EXISTING FLASHING BEACON SIGN
- EXISTING CLOSED CIRCUIT TELEVISION CAMERA
- EXISTING MICROWAVE DETECTOR
- EXISTING DETECTOR LOOP
- EXISTING LIGHTING CONTROLLER, DUPLEX
- EXISTING CONTROLLER CABINET
- EXISTING RAMP METER SIGNAL POLE/HEAD
- EXISTING PULLING PEDESTAL

- EXISTING RAMP METER FLASHER
- EXISTING HIGHWAY ADVISORY RADIO ANTENNA
- EXISTING CCTV CAMERA POLE
- EXISTING UTILITY SERVICE CONNECTION,
POLE MOUNTED
- EXISTING UTILITY SERVICE CONNECTION,
PAD MOUNTED
- EXISTING CONCEALED CONDUIT IN STRUCTURE
- EXISTING EXPOSED CONDUIT
- EXISTING RACEWAY OR DIRECT BURIED CABLE
WITHOUT ENCASEMENT
- EXISTING CONCEALED CONDUIT UNDERGROUND,
TRENCHED OR PUSHED
- EXISTING ELECTRIC CABLE IN CONDUIT



REVISIONS	
NAME	DATE

ILLINOIS DEPARTMENT OF TRANSPORTATION
F.A.I. 90/94 (DAN RYAN EXPRESSWAY)
GARFIELD BLVD TO 31ST STREET (SB LOCAL LANES)

ELECTRICAL SYMBOLS

SCALE: NOT TO SCALE
DATE: June 9, 2006

DRAWN BY: HAR
CHECKED BY: JPC

EI-100

P:\44468\electrical\5-ctrls 15 & 19\contract 15\sheet\91002.dwg 06/07/2006 09:59:58 AM