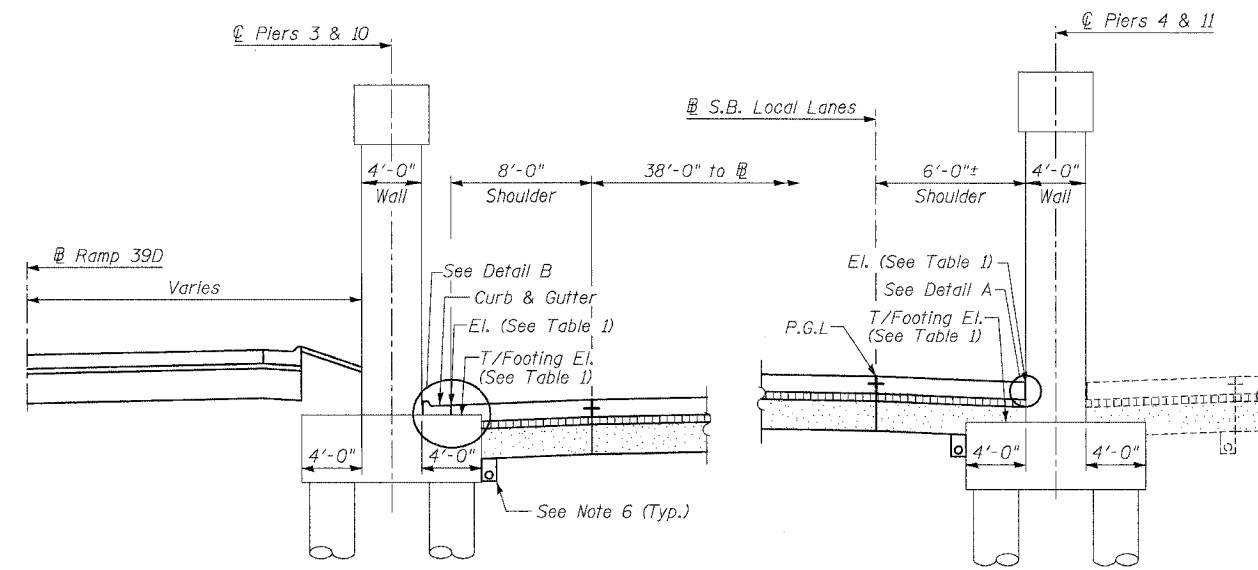
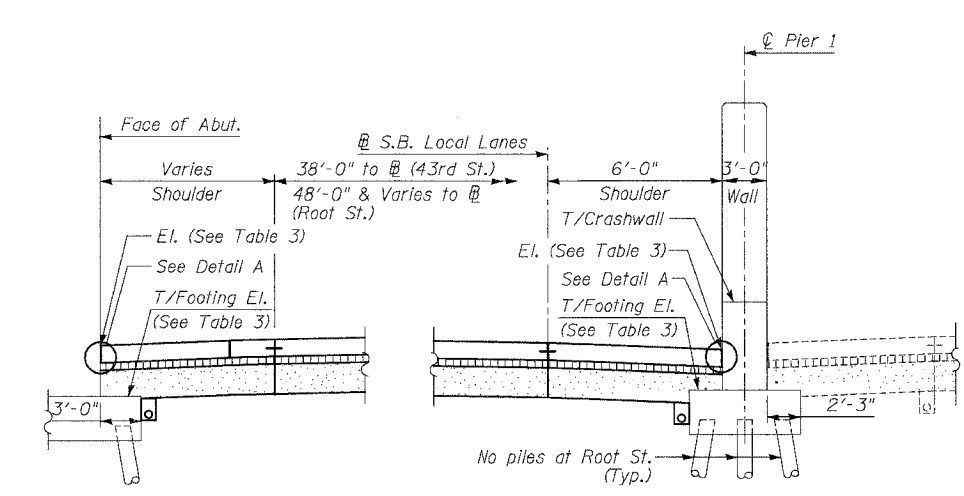


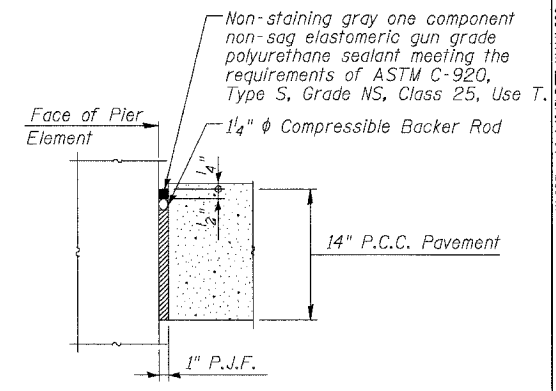
F.A.I.	SECTION	COUNTY	TOTAL SHEETS	SHEET NO.
94/90		COOK	588	375
STA.	TO STA.			
FED. ROAD DIST. NO.	ILLINOIS	FED. AID PROJECT		
62303		*(2021-922 PT2 ETC 2324.6-1P) R-11		



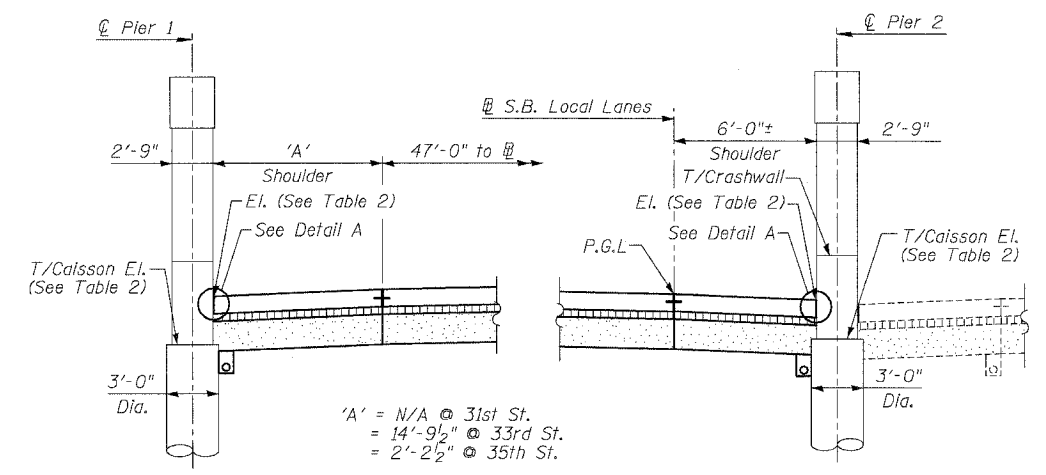
**SHOULDER DETAIL AT OVERHEAD RAILROAD**  
Near 40th Street (S.N.'s 016-0138, 0139 & 0140)



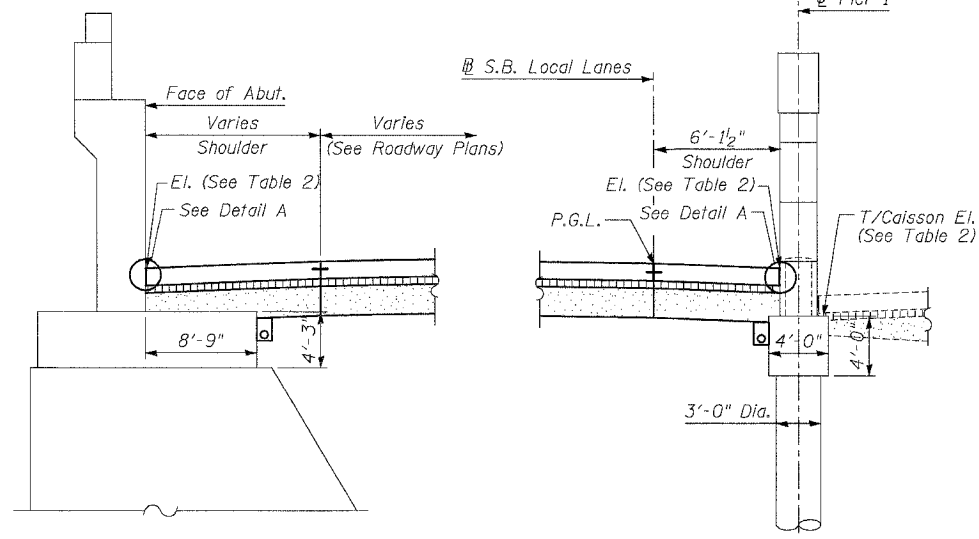
**SHOULDER DETAIL AT 43rd STREET (S.N. 016-1155)**  
Root Street (S.N. 016-1154) Similar as noted



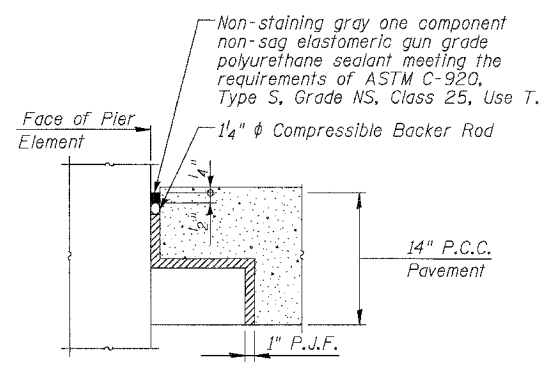
**DETAIL A**  
Cost of P.J.F., Backer Rod and sealant included with PCC Shoulder



**SHOULDER DETAIL AT OVERHEAD BRIDGES**  
For 31st Street (S.N. 016-1159)  
33rd Street (S.N. 016-1158)  
35th Street (S.N. 016-1160)



**SHOULDER DETAIL AT 39th STREET (S.N. 016-0398)**



**DETAIL B**  
Cost of P.J.F., Backer Rod and sealant included with PCC Shoulder

**TABLE 1**

PIER	T/FOOTING EL.	T/SHOULDER EL.	
		MAX.	MIN.
3	-0.58	0.7	0.4
4	-1.13	0.6	0.2
10	-0.17	1.0	0.8
11	-1.09	0.9	0.7

**TABLE 2**

LOCATION	PIER	T/CAISSON EL.	T/SHOULDER EL.	
			MAX.	MIN.
31st St.	1	-5.64	N/A	N/A
	2	-6.44	-4.1	-4.8
33rd St.	1	-4.98	-4.0	-4.2
	2	-5.36	-3.4	-3.6
35th St.	1	-3.69	-1.5	-1.8
	2	-3.89	-1.5	-1.7
39th St.	W. Abut.	-8.25	-5.5	-6.1
	1	-7.30	-5.4	-5.9

**TABLE 3**

LOCATION	PIER	T/FOOTING EL.	T/SHOULDER EL.	
			MAX.	MIN.
Root St.	Abut.	-9.5	-4.0	-4.8
	1	-9.5	-3.9	-4.6
43rd St.	Abut.	-7.0	-4.4	-4.9
	1	-7.0	-4.4	-5.0

- Notes:
- See Typical Sections for Composition of Exist. & Prop. Pavement.
  - All views looking North.
  - Contractor shall use caution during pavement removal and excavation operations around existing overhead bridge foundations.
  - Top of Rock El. at Root Street is approx. El. -12.0
  - All dimensions at right angles to Expressway.
  - Adjust underdrain locations as required along bridge foundations. Cost included with Pipe Underdrains of the size specified.

BOWMAN, BARRETT & ASSOCIATES INC.  
CONSULTING ENGINEERS  
Chicago, Illinois  
312.228.0100  
www.bbainc.com

- LEGEND**
- Concrete Pavement
  - Stabilized Sub-base
  - Sub-base Granular material

**REVISIONS**

NAME	DATE
REVISED	06/20/06

ILLINOIS DEPARTMENT OF TRANSPORTATION  
F.A.I. 94/90 (DAN RYAN EXPRESSWAY)  
GARFIELD BLVD TO 31ST STREET (SB LOCAL LANES)  
**ROADWAY DETAILS**  
**PAVEMENT DETAILS AT**  
**CROSS STREET BRIDGES**  
SCALE: NTS  
DATE: JUNE 9, 2006  
DRAWN BY: MTR  
CHECKED BY: BLU

RDT-21

6/23/2006 11:42:30 PM