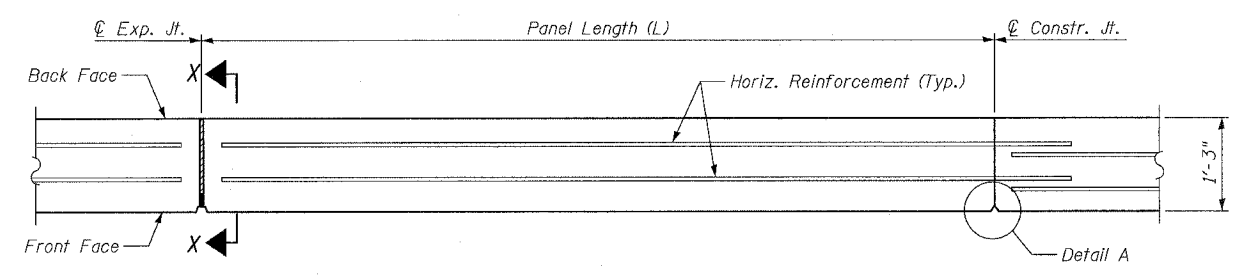
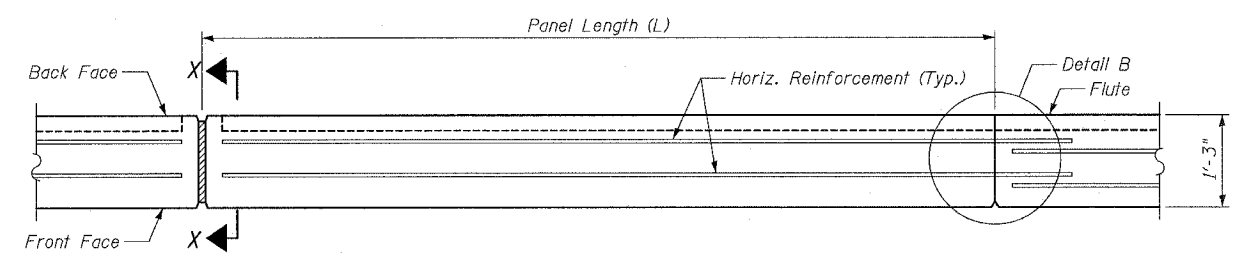


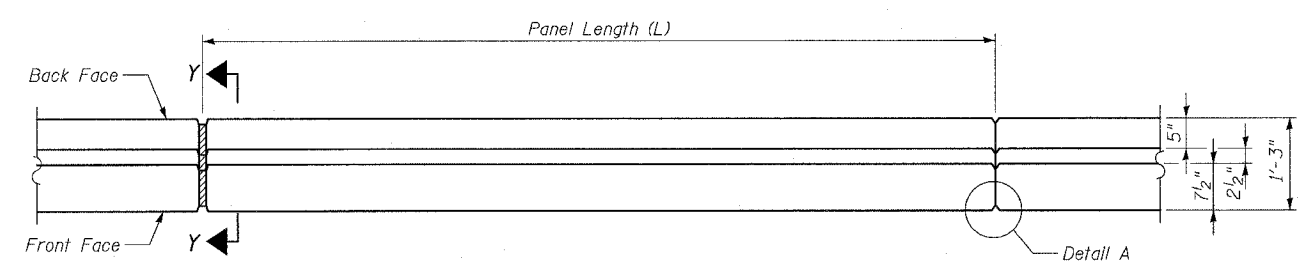
F.A.I.	SECTION	COUNTY	TOTAL SHEETS	SHEET NO.
94/90		COOK	588	449
STA.	TO STA.			
FED. ROAD DIST. NO.	ILLINOIS FED. AID PROJECT			
62303 • (2021-922 PT2 ETC 2324.6-1P) R-11				



TYPICAL WALL PANEL



TYPICAL FLUTED PARAPET PANEL

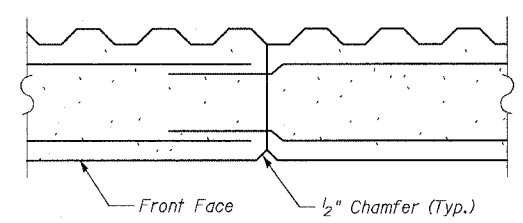


TYPICAL F SHAPED BARRIER PANEL

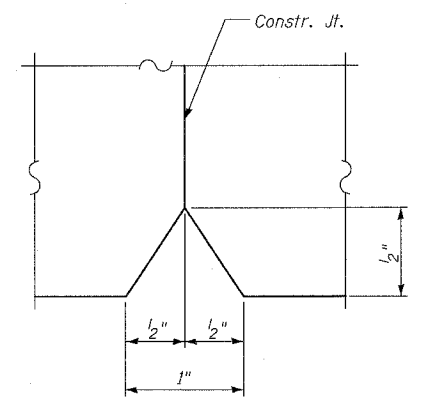
See above details for treatment of horizontal reinforcement bars

NOTES:

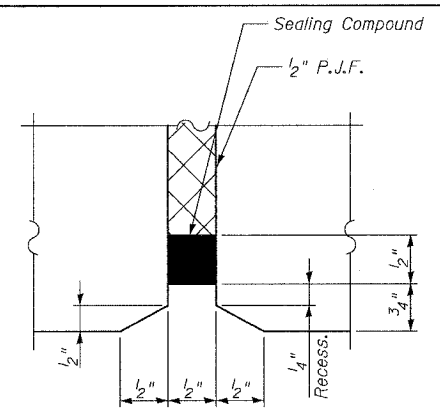
- Sealing compound shall consist of a two-component non-staining gray sealing compound with polysulfide liquid polymer gun-grade with primer. Cost included with "Concrete Superstructure" or "Concrete Structures".
- For existing expansion joints left in place after concrete removal & exposed to view, the Contractor shall remove the existing sealing compound and re-seal per the requirements of Note 2 as directed by the Engineer. Cost included with "Concrete Superstructure".
- Reinforcement to pass through Constr. Jts. (Both Faces). No reinforcement to pass through Expansion Jts.
- On portions of existing wall to remain, horizontal grooving at top shall be filled with an approved epoxy mortar as directed by Engineer. Cost included with "Concrete Removal".



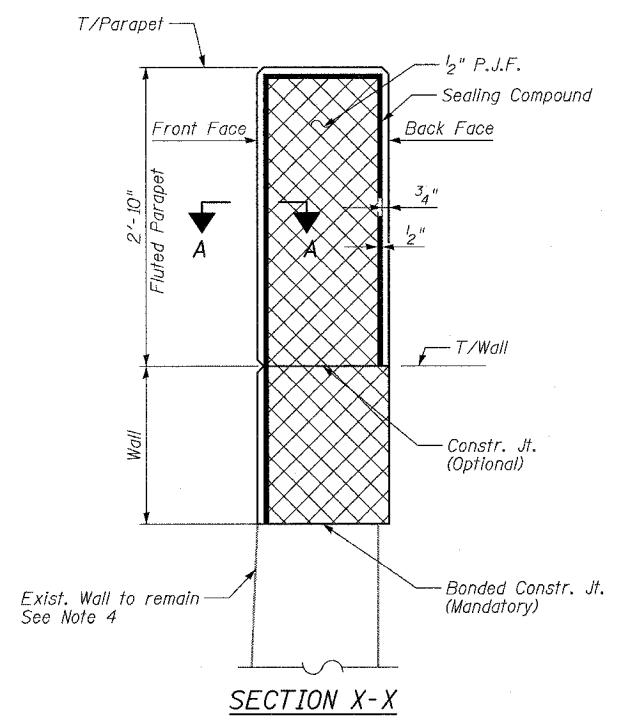
DETAIL B  
(In Fluted Parapet)



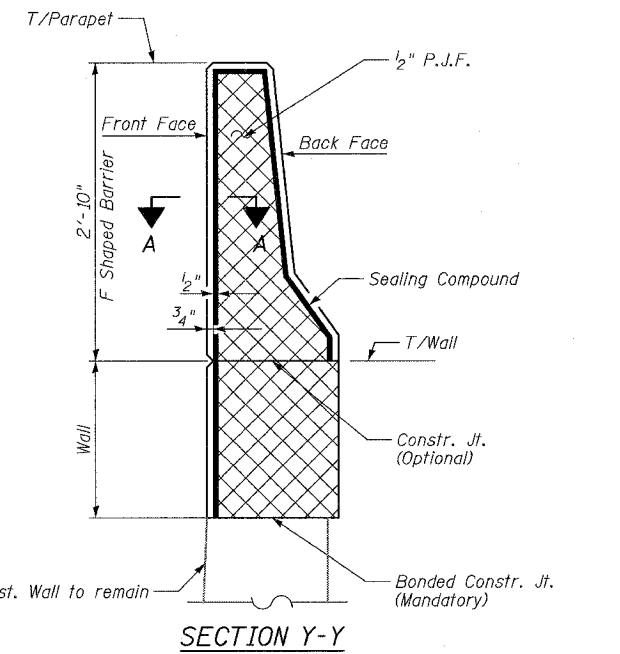
DETAIL A



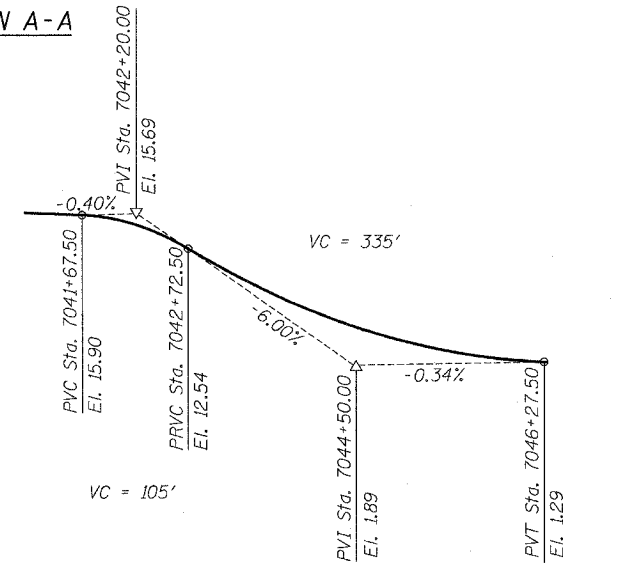
SECTION A-A



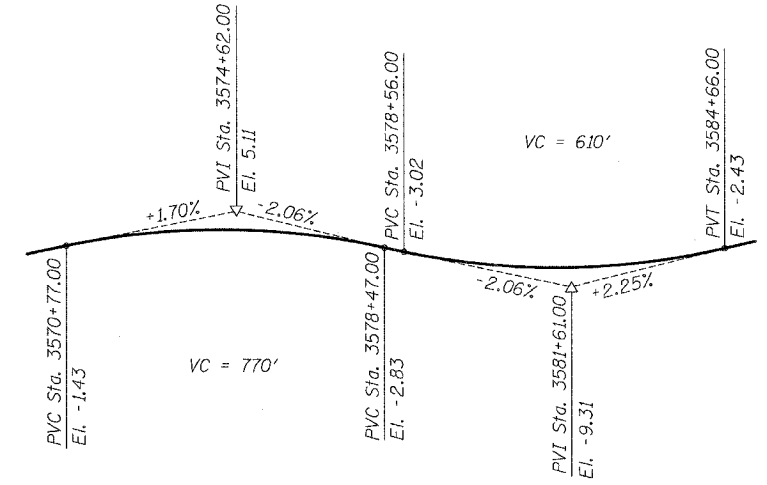
SECTION X-X



SECTION Y-Y



PROFILE GRADE LINE  
Along @ Ramp 39D



PROFILE GRADE LINE  
Along @ SB Local Lanes

SHEET 5 OF 8

REVISIONS	
NAME	DATE
REVISED	06/23/06
REVISED	7/11/06

ILLINOIS DEPARTMENT OF TRANSPORTATION  
F.A.I. 94/90 (DAN RYAN EXPRESSWAY)  
GARFIELD BLVD TO 31ST STREET (SB LOCAL LANES)

RETAINING WALL S-39S-R  
MISCELLANEOUS DETAILS

SCALE: NTS  
DATE: JUNE 9, 2006  
DRAWN BY: MTR  
CHECKED BY: BLU

BOWMAN, BARRETT & ASSOCIATES INC.  
CONSULTING ENGINEERS  
Chicago, Illinois  
312.228.0100  
www.bbandainc.com

7/12/2006 10:25:03 PM