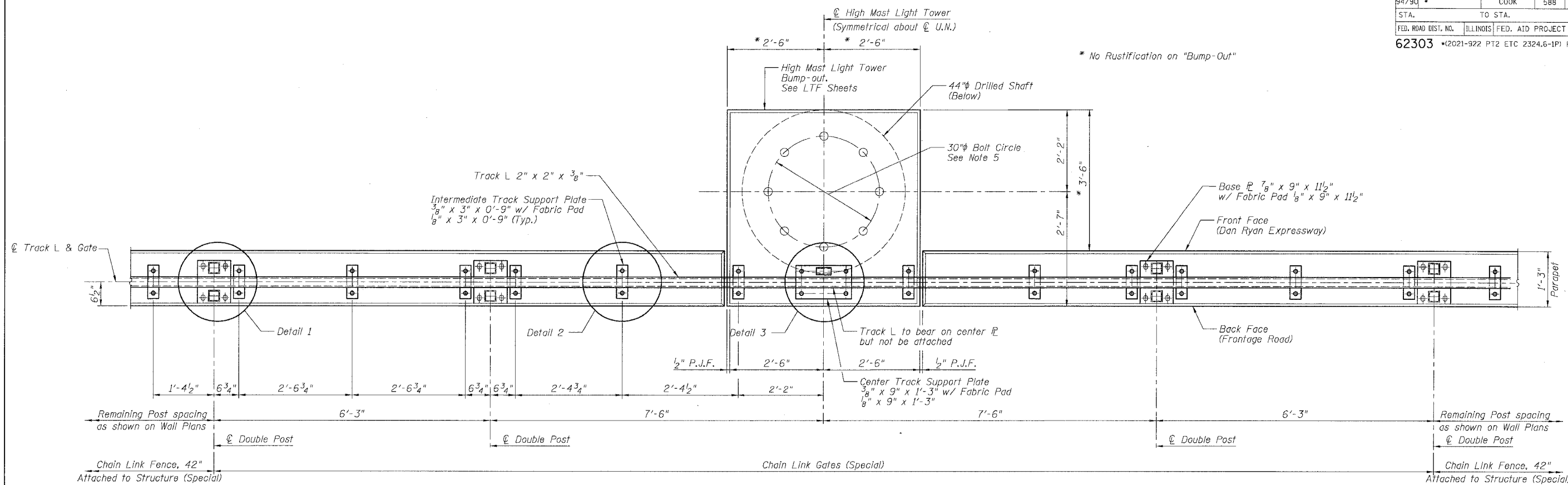
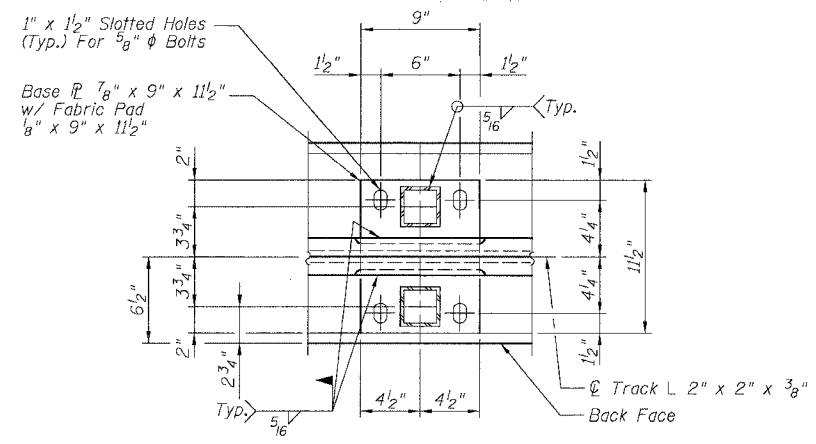


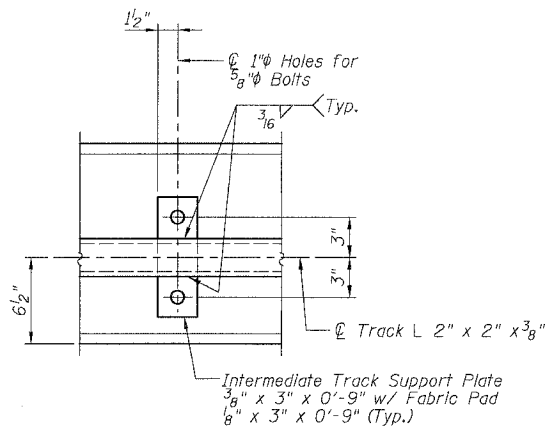
|                     |           |                   |              |           |
|---------------------|-----------|-------------------|--------------|-----------|
| F.A.I.              | SECTION   | COUNTY            | TOTAL SHEETS | SHEET NO. |
| 94/90               |           | COOK              | 588          | 455A      |
| STA.                | TO STA.   |                   |              |           |
| FED. ROAD DIST. NO. | ILLINOIS  | FED. AID PROJECT  |              |           |
| 62303               | *2021-922 | PT2 ETC 2324.6-1P | R-11         |           |



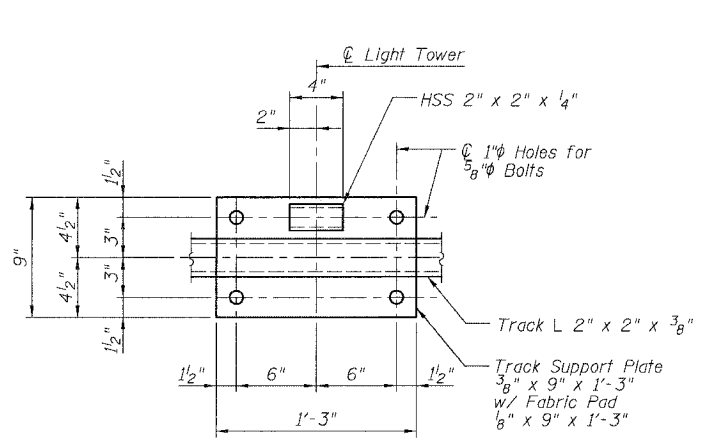
PLAN - GATE IN OPEN POSITION



DETAIL 1



DETAIL 2



DETAIL 3

NOTES:

1. All Bolts shall be Stainless Steel conforming to ASTM F593-98 and F594-98.
2. All Pipes and Bars shall be Hot-Dipped Galvanized after fabrication.
3. For Back Face Elevations, See Sheet SD3.
4. Attachment of Intermediate Track Support  $\bar{L}$  and Center Track Support  $\bar{L}$  shall follow alternate detail as described on Sheet SD3.
5. For HMLT Anchor Rod details see District 1 Std. BE501.

SHEET SD2A OF SD9

| REVISIONS |      |
|-----------|------|
| NAME      | DATE |
|           |      |
|           |      |
|           |      |
|           |      |
|           |      |
|           |      |
|           |      |
|           |      |
|           |      |

ILLINOIS DEPARTMENT OF TRANSPORTATION  
 F.A.I. 94/90 (DAN RYAN EXPRESSWAY)  
 GARFIELD BLVD TO 31ST STREET (SB LOCAL LANES)  
 CHAIN LINK FENCE, 42" ATTACHED TO  
 STRUCTURE (SPECIAL) AND GATE  
 TYPICAL GATE PLAN AND NOTES  
 SCALE: NTS  
 DATE: JUNE 9, 2006  
 DRAWN BY: LAM  
 CHECKED BY: BLU

BOWMAN, BARRETT & ASSOCIATES INC.  
 CONSULTING ENGINEERS  
 Chicago, Illinois  
 312.228.0100  
 www.bbainc.com

9-49507 AM 6/9/2006