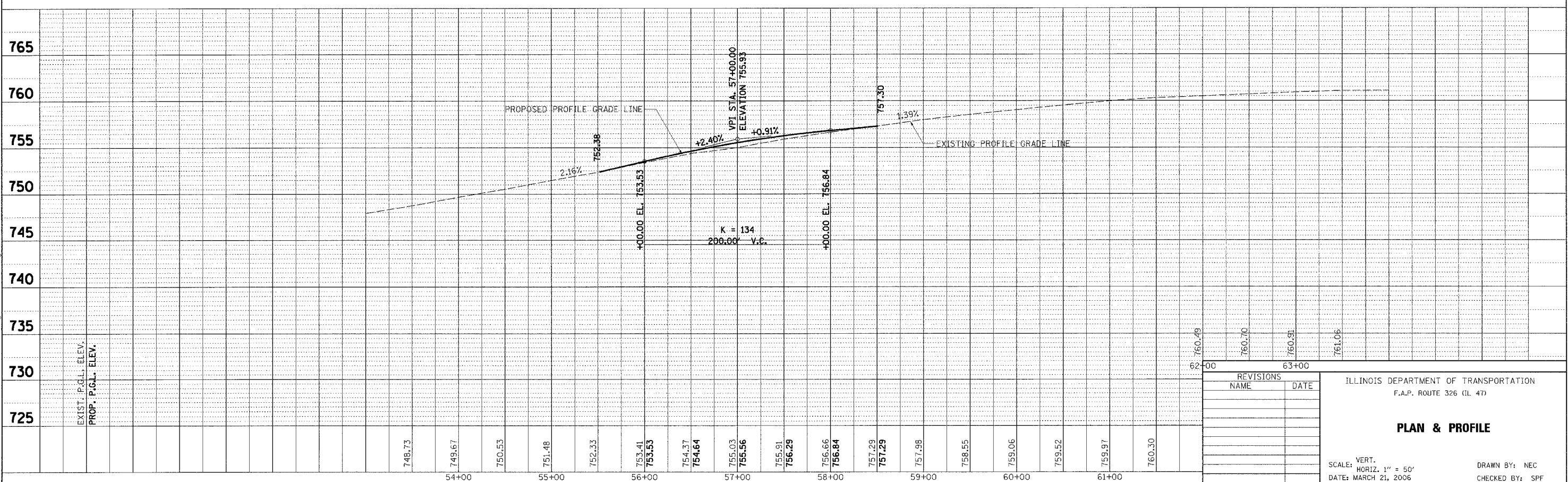
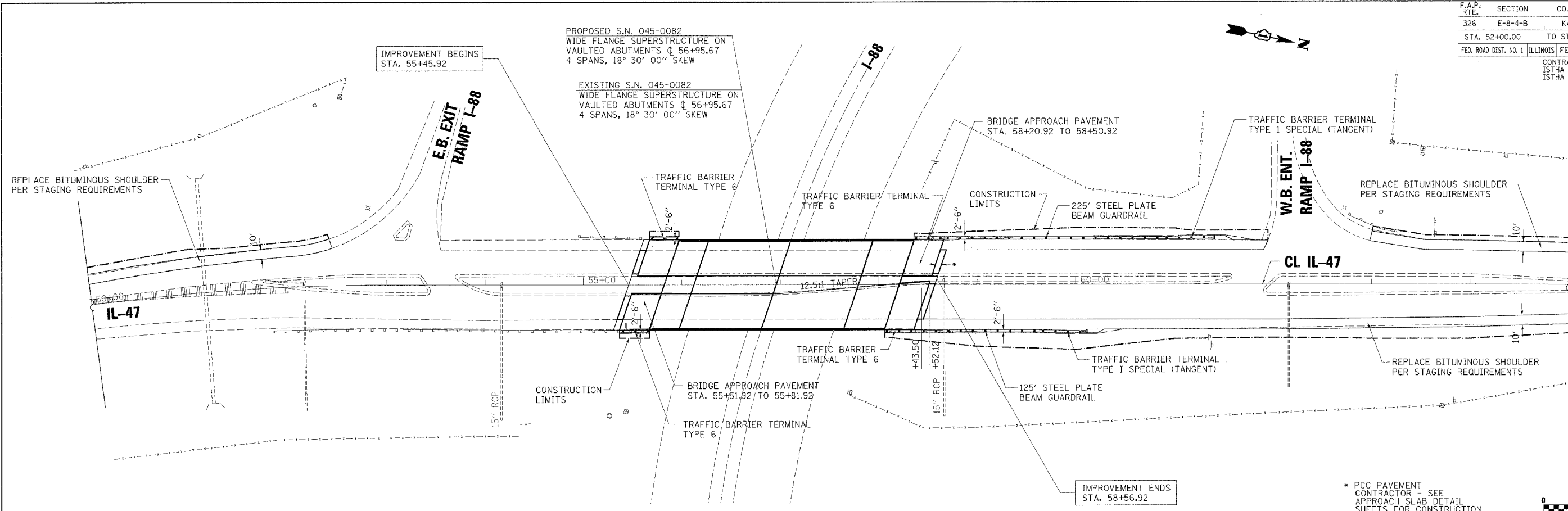


F.A.P. RTE.	SECTION	COUNTY	TOTAL SHEETS	SHEET NO.
326	E-8-4-B	KANE	62	14
STA. 52+00.00		TO STA. 63+64.69		
FED. ROAD DIST. NO. 1 ILLINOIS FED. AID PROJECT				
CONTRACT NO. 62531 ISTHA CONTRACT RR-02-5129 ISTHA BRIDGE NO. 1101				



REVISIONS	
NAME	DATE

ILLINOIS DEPARTMENT OF TRANSPORTATION
F.A.P. ROUTE 326 (IL 47)

PLAN & PROFILE

SCALE: VERT. 1" = 50'
HORIZ. 1" = 50'

DATE: MARCH 21, 2006

DRAWN BY: NEC
CHECKED BY: SPF

PLAN	SURVEYED	DATE
NOTE BOOK	ADJUSTED	
NO.	BY	

PROFILE	SURVEYED	DATE
NOTE BOOK	ADJUSTED	
NO.	BY	

5/4/2006 3:24:58 PM I:\1182522\cod\Design\182522_Plan.dgn