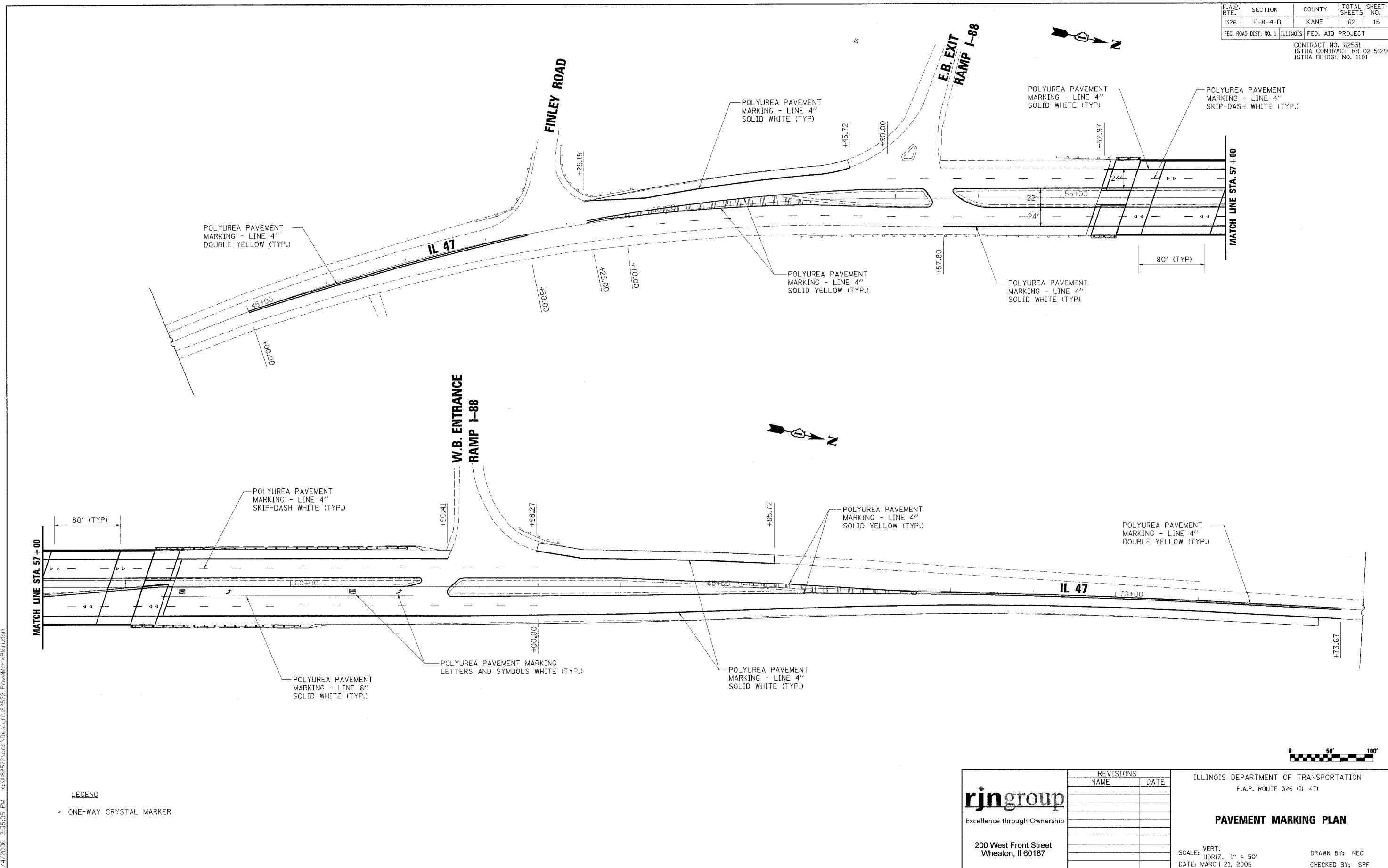


F.A.P. RTE.	SECTION	COUNTY	TOTAL SHEETS	SHEET NO.
326	E-8-4-B	KANE	62	15
FED. ROAD DIST. NO. 1 ILLINOIS FED. AID PROJECT				
CONTRACT NO. G2531 ISTHA CONTRACT RR-02-5129 ISTHA BRIDGE NO. 1101				



5/4/2006 3:35:05 PM K:\1182522\cadd\Drawings\1182522_PaveMarkPlan.dgn

LEGEND
 ▶ ONE-WAY CRYSTAL MARKER

rjngroup
 Excellence through Ownership
 200 West Front Street
 Wheaton, IL 60187

REVISIONS	
NAME	DATE

ILLINOIS DEPARTMENT OF TRANSPORTATION
 F.A.P. ROUTE 326 (IL 47)
PAVEMENT MARKING PLAN
 SCALE: VERT. 1" = 50'
 HORIZ. 1" = 50'
 DATE: MARCH 21, 2006
 DRAWN BY: NEC
 CHECKED BY: SPF

