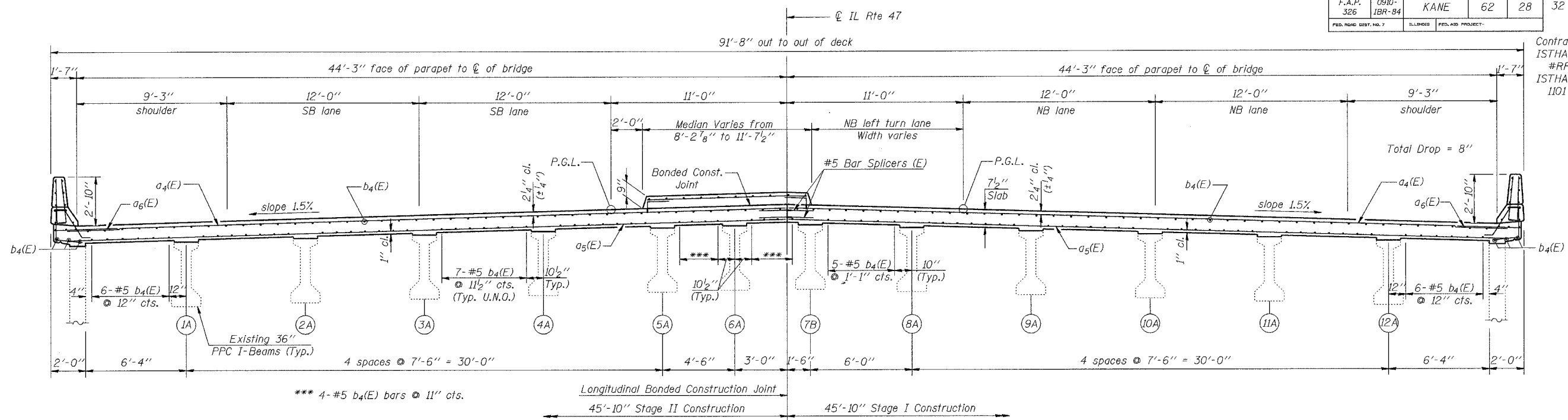
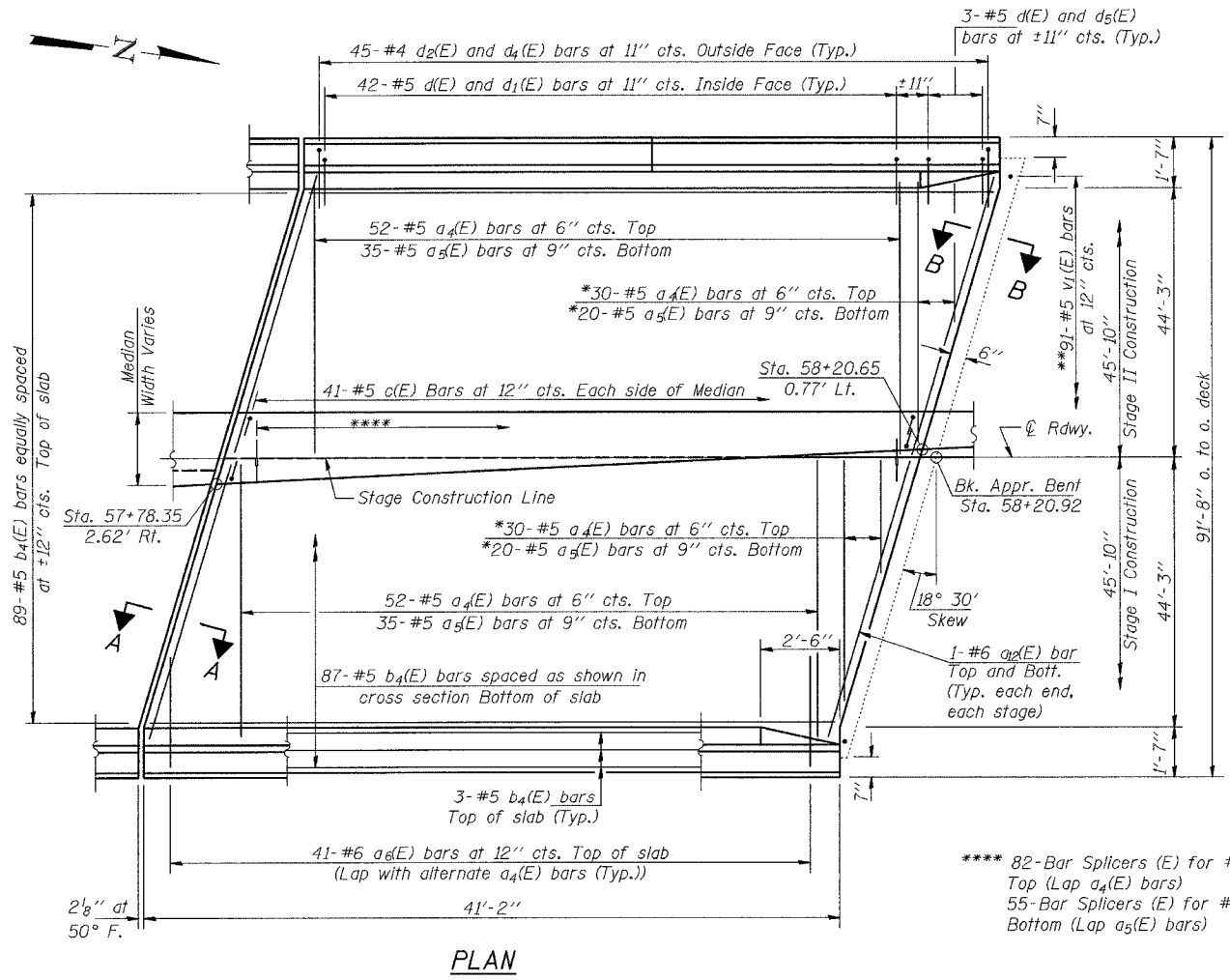


ROUTE NO.	SECTION	COUNTY	SHEETS	SHEET	SHEET NO. 10
F.A.P. 326	0910-IBR-84	KANE	62	28	32 SHEETS
FED. ROAD DIST. NO. 7	ILLINOIS	FED. AID PROJECT			

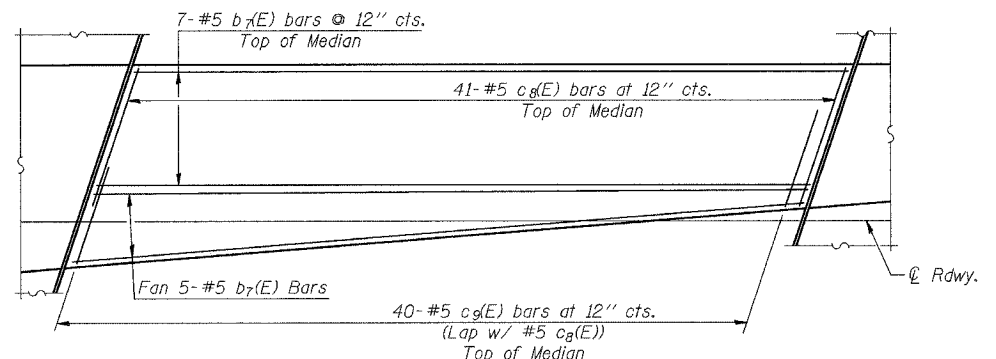
Contract #62531
 ISTHA Contract #RR-02-5129
 ISTHA Bridge No. 1101



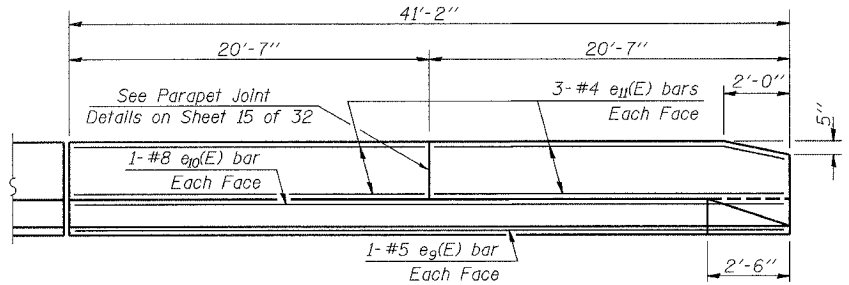
CROSS SECTION SPAN #1
 (Looking North)



PLAN



MEDIAN REINFORCEMENT



INSIDE ELEVATION OF PARAPET

**Field drill and epoxy grout in place according to Article 584 of the Standard Specifications. Cost of drilling and grouting is included with Reinforcement Bars, Epoxy Coated.

* Order $a_4(E)$ and $a_5(E)$ bars full length. Cut to fit skew and use remainder of bars in opposite end.

NOTES

- Median to be constructed after completion of Stage II Construction.
- Min. lap length for #5 bars = 1'-8"
- See Sheet 16 of 32 for Section A-A.
- See Sheet 11 of 32 for Section B-B.
- See Sheet 12 of 32 for Median and Parapet Details, and Bill of Material.
- U.N.O. = Unless Noted Otherwise

rjngroup
 Excellence through Ownership
 200 West Front Street
 Wheaton, IL 60187

ILLINOIS DEPARTMENT OF TRANSPORTATION
 NORTH VAULTED SPAN
 IL RTE. 47 OVER I-88 (E-W TOLLWAY)
 KANE COUNTY
 STRUCTURE NO. 045-0082
 DRAWN BY BLB
 CHECKED BY WJV
 DATE: 2-01-2006

5/5/2006 K:\1112221\Structures\11-47 over I-88\Final Plans_Review.dgn