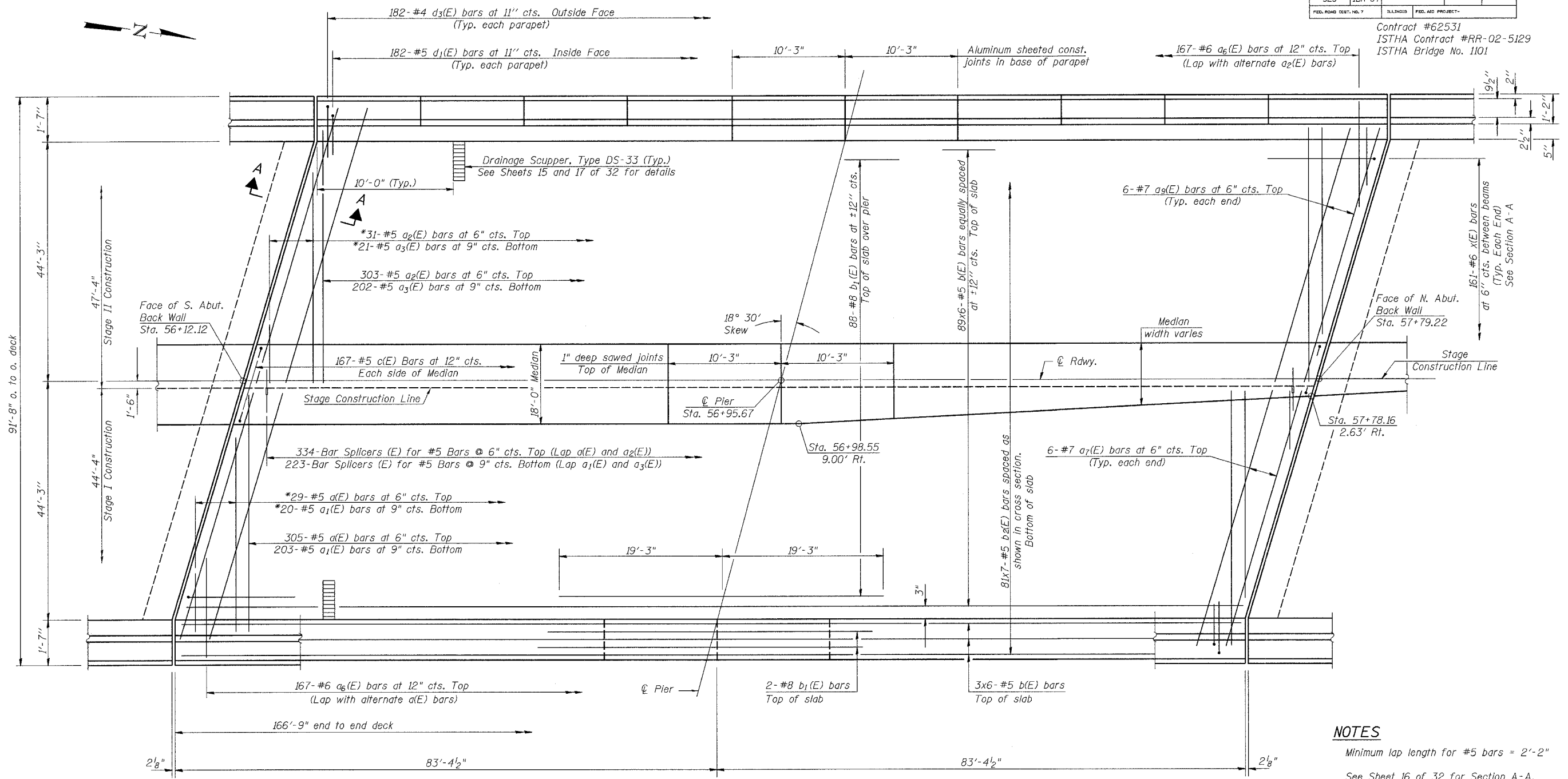


Contract #62531
 ISTHA Contract #RR-02-5129
 ISTHA Bridge No. 1101

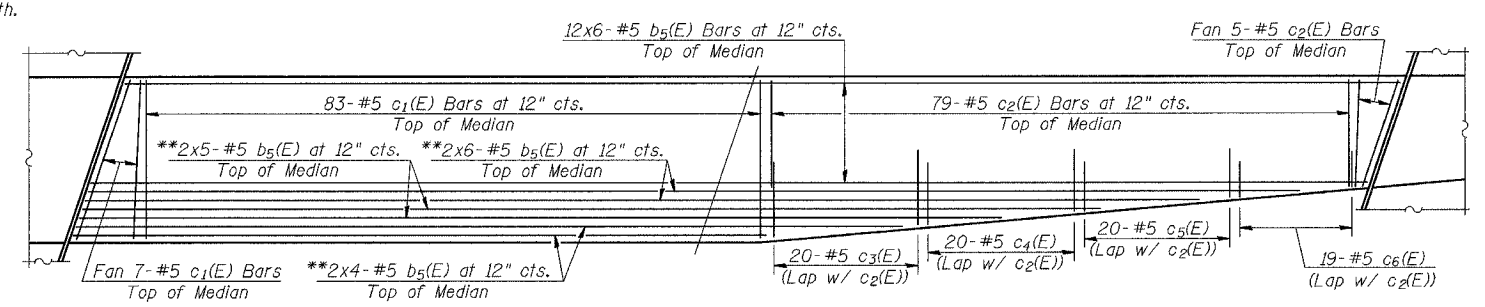


PLAN

- NOTES**
- Minimum lap length for #5 bars = 2'-2"
 - See Sheet 16 of 32 for Section A-A.
 - See Sheet 14 of 32 for Cross Section of Deck and Median Details.
 - See Sheet 15 of 32 for Parapet Details and Bill of Material.

* Order a(E) thru a3(E) bars full length. Cut to fit skew and use remainder of bars in opposite end.

** Vary lap on b5(E) Bars to fit inside median



MEDIAN REINFORCEMENT

rjngroup
 Excellence through Ownership
 200 West Front Street
 Wheaton, IL 60187

ILLINOIS DEPARTMENT OF TRANSPORTATION
 SUPERSTRUCTURE PLAN
 IL RTE. 47 OVER I-88 (E-W TOLLWAY)
 KANE COUNTY
 STRUCTURE NO. 045-0082

DATE: 2-01-2006
 DRAWN BY: BLB
 CHECKED BY: WJV

5/5/2006 K:\1102521\Structures\IL-47 over I-88\Final\Plans_Revise.dgn