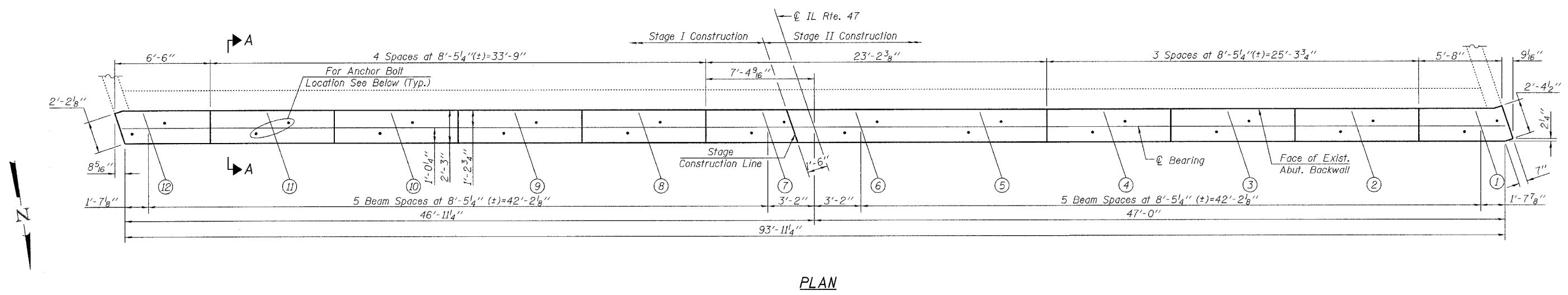
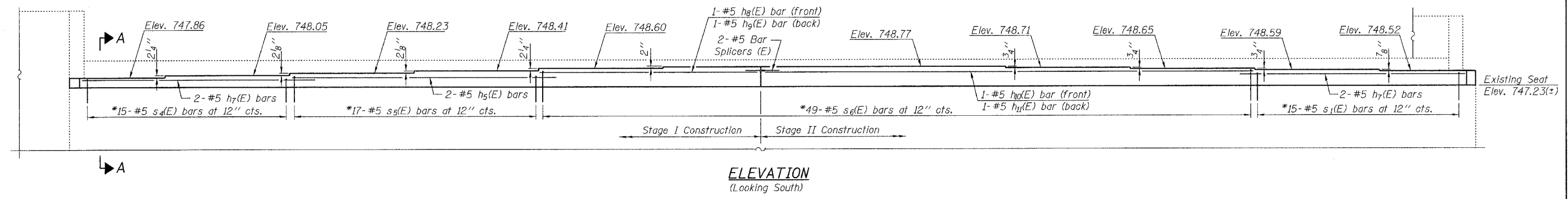


Contract #62531  
 ISTHA Contract #RR-02-5129  
 ISTHA Bridge No. 1101

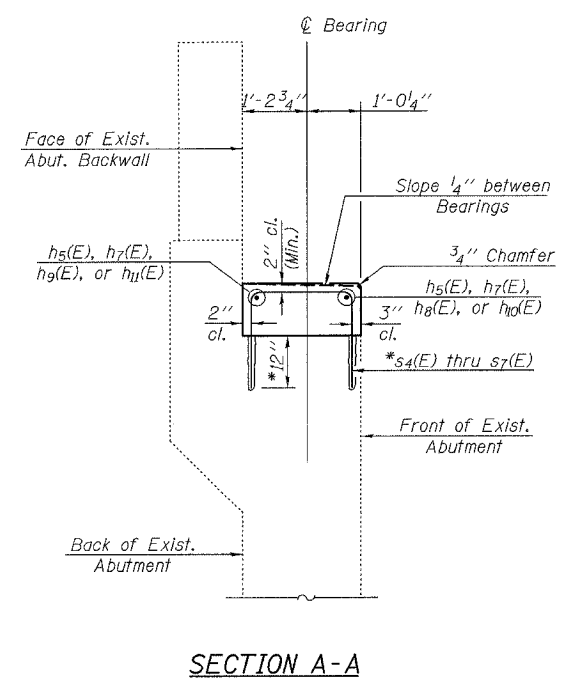


**BILL OF MATERIAL**

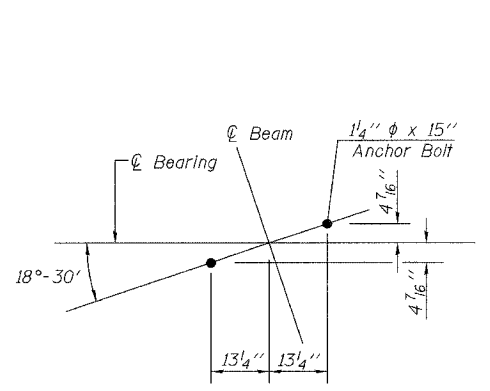
Bar	No.	Size	Length	Shape
h5(E)	2	#5	18'-9"	—
h7(E)	4	#5	16'-10"	—
h8(E)	1	#5	14'-2"	—
h9(E)	1	#5	13'-7"	—
hg(E)	1	#5	33'-9"	—
h11(E)	1	#5	34'-3"	—
s4(E)	15	#5	4'-8"	□
s5(E)	17	#5	5'-6"	□
s6(E)	49	#5	6'-2"	□
s7(E)	15	#5	6'-0"	□

Concrete Structures	Cu. Yd.	10.0
Reinforcement Bars, Epoxy Coated	Pound	790
Bridge Seat Sealer	Sq. Ft.	215
Bar Splicers	Each	2

Reinforcement bars designated (E) shall be epoxy coated.



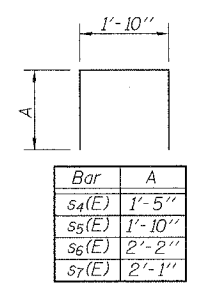
\*Field drill and epoxy grout in place according to Article 584 of the Standard Specifications. Cost of drilling and grouting is included with Reinforcement Bars, Epoxy Coated.



**NOTES**

- See Sheet 24 of 32 for Anchor Bolt installation.
- Space reinforcement in cap to miss anchor bolts.
- Reinforcement bars designated (E) shall be epoxy coated.
- Pour steps monolithically with cap.
- All edges shall have standard 3/4" chamfers.
- All surfaces where new concrete is cast against existing concrete shall be Bonded Construction Joints, in accordance with Article 503.09(b)(2) of the Standard Specifications.
- Lap Length for #5 Bar = 1'-8".

**BARS s1(E), s4(E) THRU s6(E)**



**rjngroup**  
 Excellence through Ownership  
 200 West Front Street  
 Wheaton, IL 60187

ILLINOIS DEPARTMENT OF TRANSPORTATION  
 SOUTH ABUTMENT DETAILS  
 IL RTE. 47 OVER I-88 (E-W TOLLWAY)  
 KANE COUNTY  
 STRUCTURE NO. 045-0082  
 DRAWN BY BLB  
 CHECKED BY WJV  
 DATE: 2-01-2006