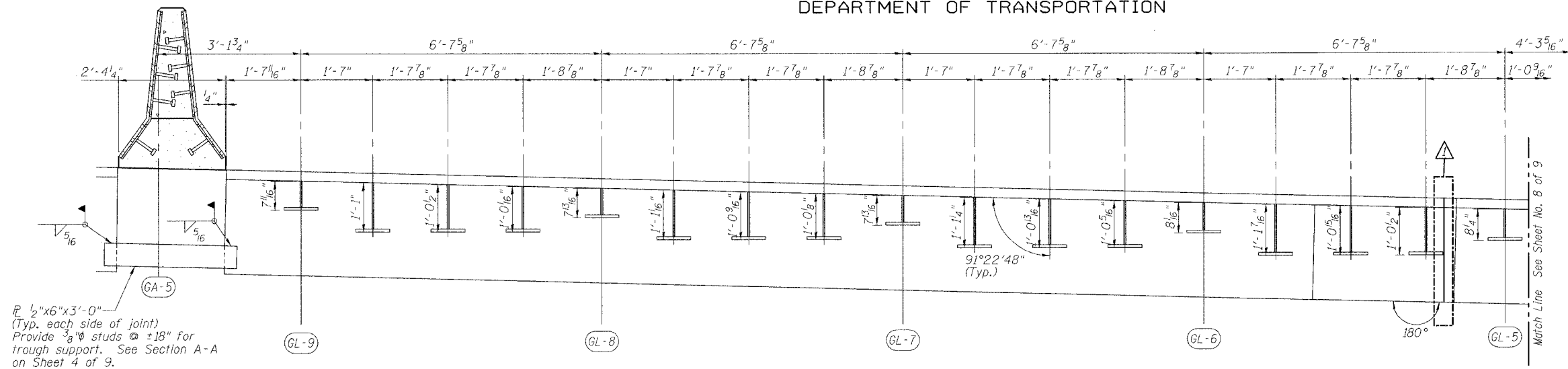


STATE OF ILLINOIS  
DEPARTMENT OF TRANSPORTATION

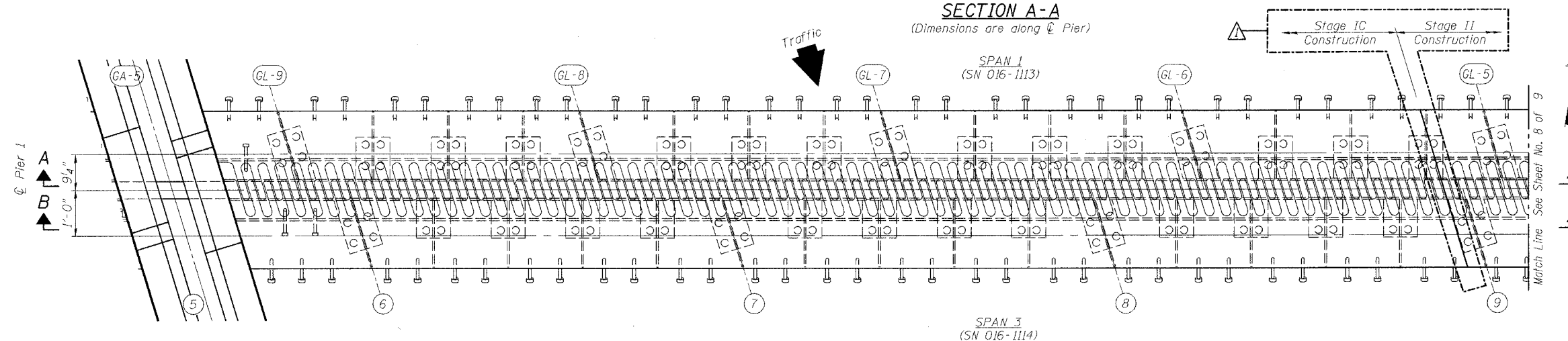
ROUTE NO.	SECTION	COUNTY	TOTAL SHEETS	SHEET NO.
FAI 90/94	*	COOK	344	250
FED. ROAD DIST. NO.	ILLINOIS	FED. AID PROJECT		

SHEET NO. 7  
9 SHEETS

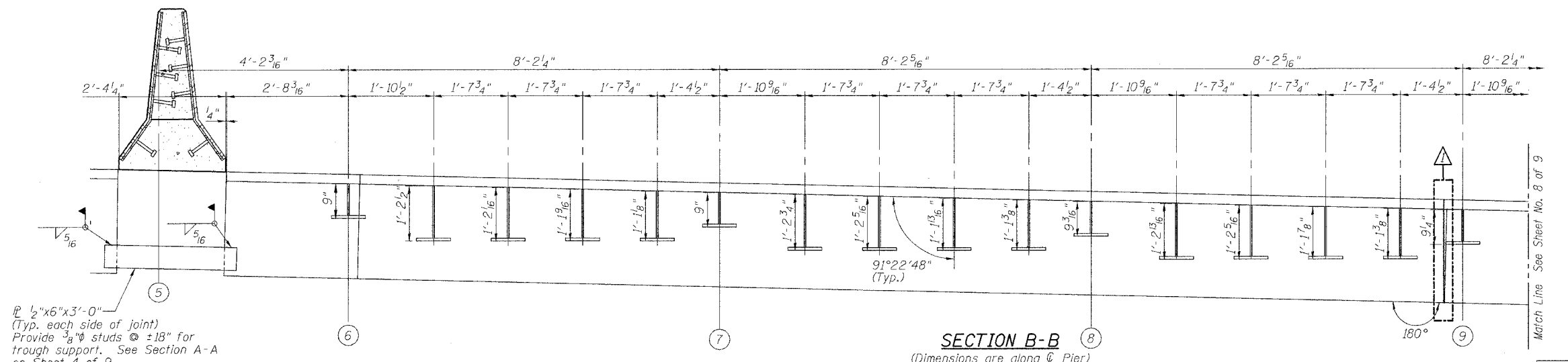
\* 2003-029BR  
Contract #62581



SECTION A-A  
(Dimensions are along  $\bar{C}$  Pier)



PLAN OF FINGER PLATE AT PIER 1 (SOUTHBOUND)



SECTION B-B  
(Dimensions are along  $\bar{C}$  Pier)

REVISIONS	
NAME	DATE
MATHUR	6/28/06

ILLINOIS DEPARTMENT OF TRANSPORTATION  
**FINGER PLATE PLAN AND ELEVATION**  
F.A.I. ROUTE 90/94 SOUTHBOUND (DAN RYAN EXPRESSWAY)  
OVER SOUTH BRANCH - CHICAGO RIVER  
COOK COUNTY  
S.N. 016-1113 - PIER 1

SCALE: VERT. \_\_\_\_\_  
HORIZ. \_\_\_\_\_  
DATE: 4/7/05

DRAWN BY: LANDREY  
DESIGNED BY: SANFORD  
CHECKED BY: MATHUR

COMPUTER FILE NO.  
04286-W01-SB-PE2

PROJECT 04286-W01  
5/11/06-MML



FILE NAME = I:\04286\W01\DRAWINGS\SOUTHBOUND\04286-W01-SB-PE2.dgn  
PLOT SCALE = 1/4" = 1' IN. DRW = XES-BB50.ENG.BRIDGE.plt  
PLOT DATE = 6/29/2006  
PLOT TIME = 9:39:45 AM  
OPERATOR = michaell