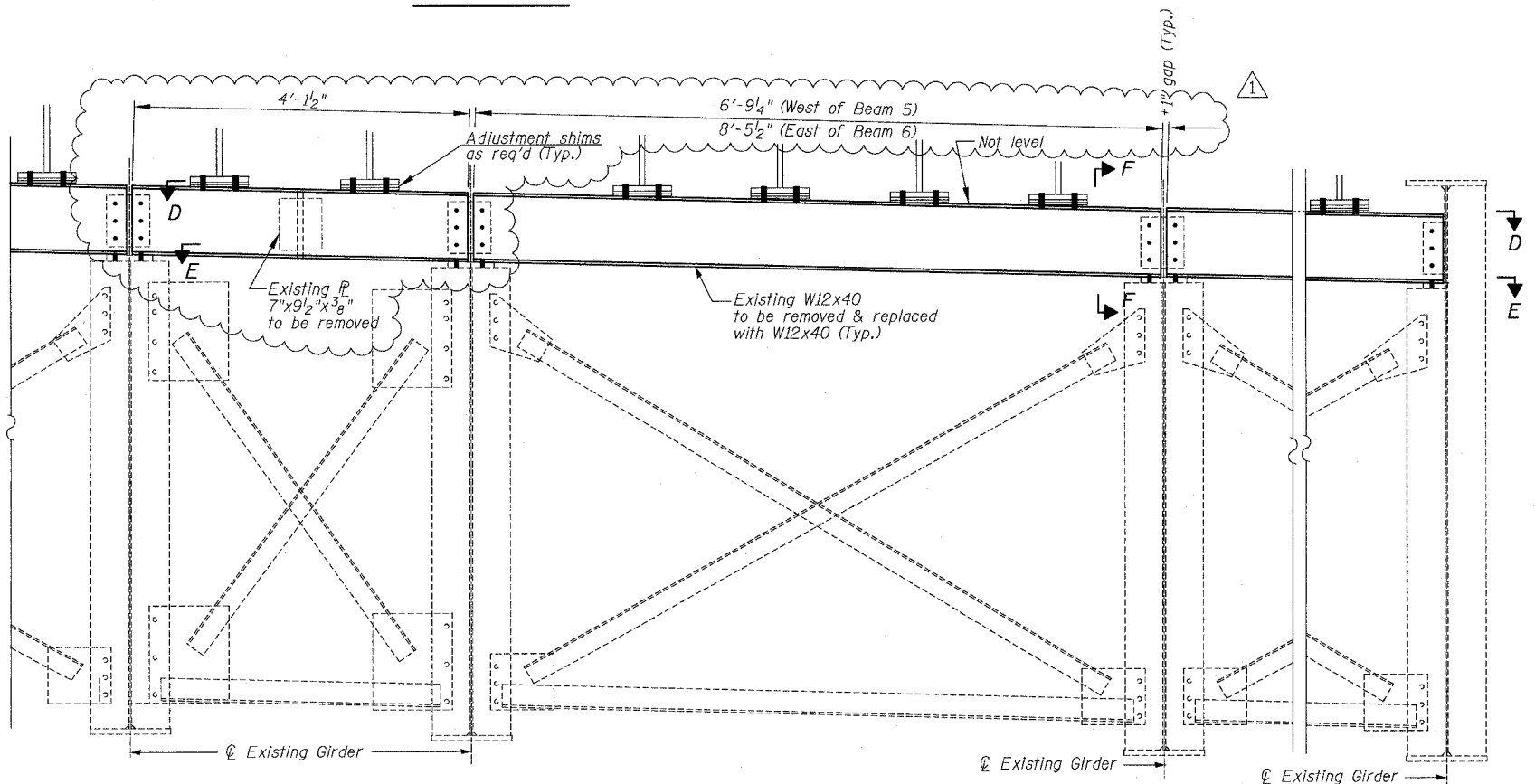
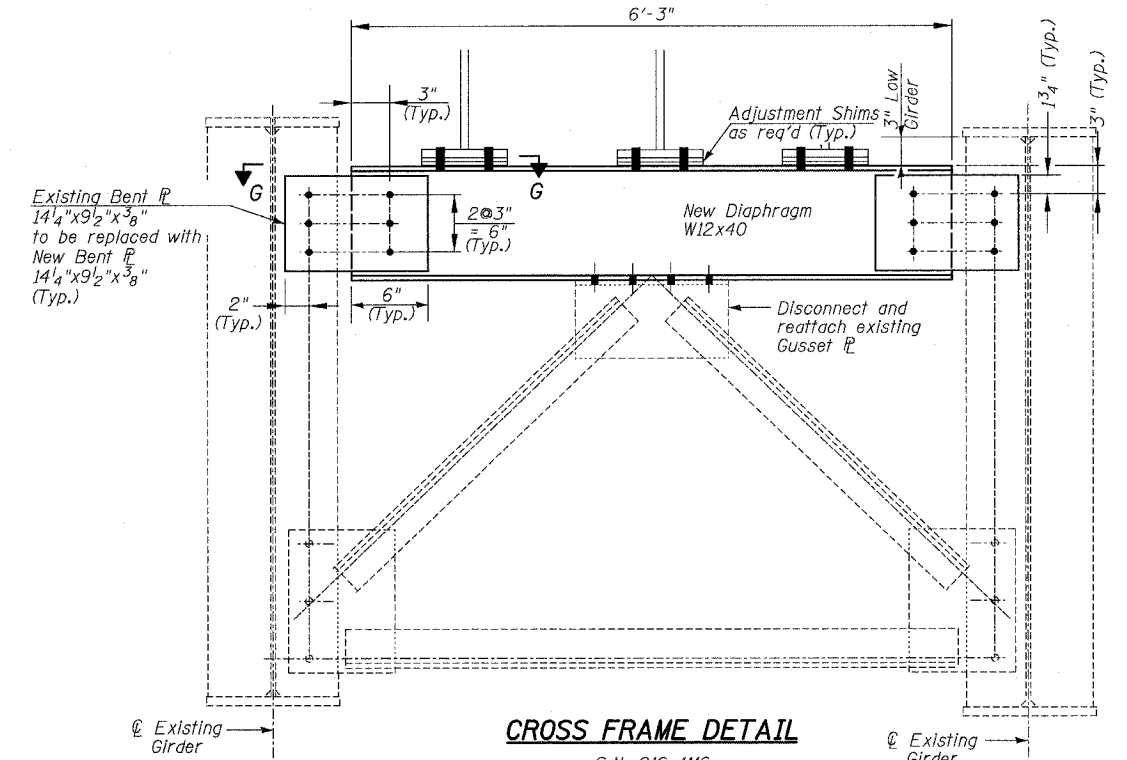
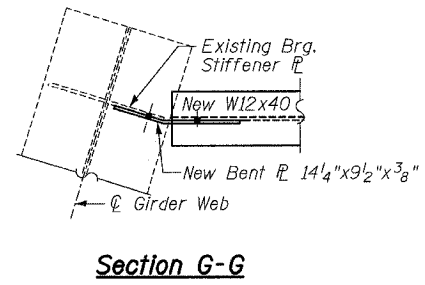
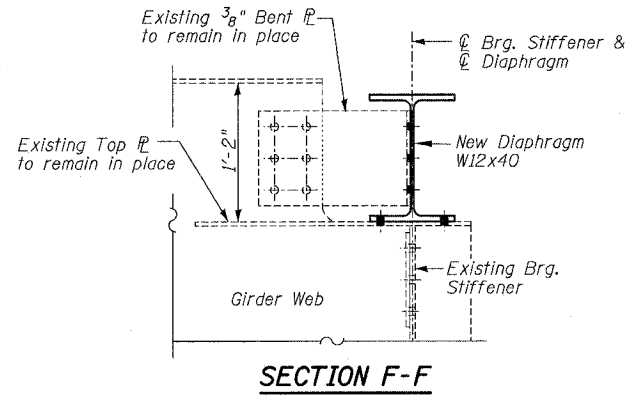
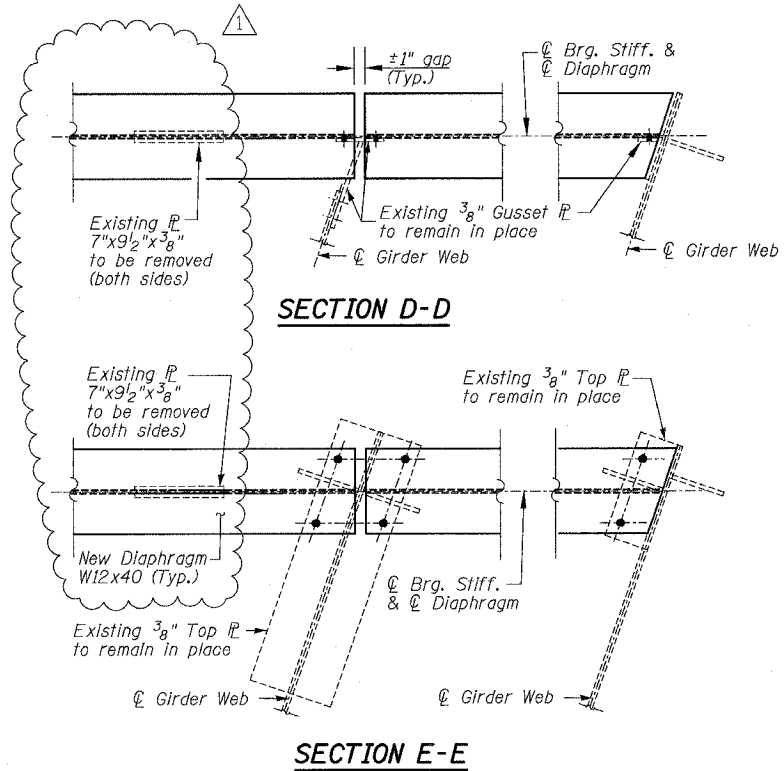


F.A.I.	SECTION	COUNTY	TOTAL SHEETS	SHEET NO.
94/90	2003-0291	COOK	344	272
STA.		TO STA.		
FED. ROAD DIST. NO.	ILLINOIS	FED. AID PROJECT		
62581				



CROSS FRAME DETAIL
 S.N. 016-1116

CF	7 REQ'D
809-2	1 REQ'D

REVISIONS

NAME	DATE
ADDENDUM NO. 1	6/29/06

ILLINOIS DEPARTMENT OF TRANSPORTATION
 F.A.I. 94/90 (DAN RYAN EXPRESSWAY)
 SB DAN RYAN ELEVATED BRIDGE
 REPAIR FROM 15TH TO 28TH STREETS
 DIAPHRAGM REPLACEMENT DETAILS
 PIER 26, SN 016-1117
 SCALE: NTS
 DATE: 5/25/2006
 DRAWN BY: BDC
 CHECKED BY: IYL

BOWMAN, BARRETT & ASSOCIATES INC.
 CONSULTING ENGINEERS
 Chicago, Illinois
 312.228.0100
 www.bbandainc.com

ILLINOIS DEPARTMENT OF TRANSPORTATION SHEETS 660-21-016-117-PP-11a-01
 4:08:51 PM 6/29/2006